

Yolo County FSA

221 W. Court, Suite 3B
Woodland, CA 95695
(530) 662-3986 x 2
(530) 662-4876 FAX

Hours:

Monday – Friday
8:00 AM – 4:30 PM

County Committee:

Randy Timothy, Chair
Bob Paschoal, Vice Chair
Tom Slater, Member
Rudy Lucero Jr., Advisor
Marlene Schuler, Advisor

County Executive

Director:

Marianne A. Morton

County Office Staff:

Nathan Bohl
Beth Collier
Dee DeLuca
Caroline Walgenbach



*Closed Friday, July 3rd in
observance of
Independence Day*



**COC NOMINATIONS
OPEN JUNE 15TH**

Nominations for candidates to run for the Yolo County FSA County Committee (COC) election representing producers in Local Administrative Area 2 (LAA-2) will be accepted from through *August 3, 2009*.

Producers who reside in the area east of I-505, west of County Road 102 and north of I-5 (Dunnigan, Zamora, Knights Landing, Yolo, Woodland and Davis), participate or cooperate in an FSA program and are of legal voting age may be nominated to serve on the COC.

Individuals and organizations representing socially disadvantaged minorities and women farmers or ranchers may nominate candidates. The nomination form and additional information may be obtained at the county office or downloaded from <http://www.fsa.usda.gov>

The county committee election is held by mail. Ballots, which will be mailed to eligible voters beginning November 6th, must be returned to the Yolo County FSA Office by the close of business on

December 7, 2009 or be postmarked by midnight on that date.

**DCP & ACRE SIGNUP
DEADLINES NEAR**

Signup for the 2009 Direct and Counter-Cyclical Payment (DCP) Program and the Average Crop Revenue Program (ACRE) has been extended until *August 14, 2009*.

Signatures for all producers sharing in base payments on a farm and all cash leases must be submitted by this date. This deadline is mandatory for all participants. Call our office right away for an appointment if you have not yet signed up your farm for 2009.



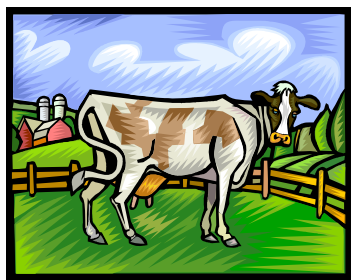
Send an e-mail to marianne.morton@ca.usda.gov to register for e-mail delivery of newsletters, news releases and deadline reminders

REQUIRED ACREAGE REPORTS (FSA-578)

Acreage reports for all cropland must be filed by producers who participate in the Direct and Counter-Cyclical Program, request a loan deficiency payment or a commodity loan, participate in the Conservation Reserve Program or participate in the Noninsured Crop Disaster Assistance Program. The 2009 spring-planted acreage reporting deadline is *July 15, 2009*.

FARM RECONSTITUTIONS

To be effective for 2009, farm combinations and divisions must be requested by *August 1, 2009*. If 2009 DCP payments have been issued, they must be refunded before the reconstitution can be processed. Resulting farms must be enrolled by August 14, 2009.



DOCUMENTING LOSSES UNDER LIP

To be eligible for assistance under the Livestock Indemnity Program (LIP), each livestock producer must provide

verifiable documentation of livestock deaths that proves the quantity and kind of eligible livestock that died as a direct result of an eligible adverse weather event in the calendar year for which benefits are being requested, such as:

- bank or private insurance documents
- FEMA or National Guard records
- production, property tax and purchase records
- rendering truck receipts
- veterinarian records
- written contracts

If such documentation is not available, the livestock producer may provide reliable records as proof of death, such as:

- brand inspection, dairy herd improvement and vaccination records
- contemporaneous producer records existing at the time of the event
- pictures

Third-party certifications of livestock deaths may be accepted under certain conditions.

DOCUMENTING LOSSES UNDER ELAP

The Emergency Assistance for Livestock, Honey Bees and Farm-Raised

Fish Program (ELAP) provides emergency relief to producers to aid in the reduction of losses due to disease, adverse weather or other conditions, as determined by the Secretary, not covered by the Supplemental Revenue Assistance Payments Program (SURE), Livestock Indemnity Program (LIP) and Livestock Forage Disaster Program (LFP). All types of losses will not be known until the program's regulations are published in the Federal Register.



Livestock, honey bee and farm-raised fish producers who incurred 2008 and/or 2009 calendar year losses due to disease, adverse weather or colony collapse disorder are advised to begin compiling loss documentation, such as:

- date, cost, type and quantify of feed purchased
- name, address and telephone number of feed vendor
- signature of feed vendor if the vendor does not have a license to conduct this type of transaction

HIGHLY ERODIBLE LAND AND WETLAND COMPLIANCE: Operators are reminded that in order to receive payments, compliance with Highly Erodible Land (HEL) and Wetland Conservation (WC) provisions are required. Farmers with HEL soils need to be aware of tillage, crop residue and rotation requirements as specified in their conservation plans. It is very important that you contact our office before modifying (e.g., tiling, draining, dredging, filling or leveling) any wetland or drainage ditch. Failure to obtain advance approval for any of these situations can result in loss of all Federal payments and eligibility.

SPOUSAL SIGNATURE AUTHORITY: A husband and wife can sign documents on behalf of each other for FSA and CCC programs in which either has an interest unless a written request for exclusion is made to the County Office from either spouse.

CONTROLLED SUBSTANCE: Any person convicted under federal or state law of a controlled substance violation could be ineligible for USDA payments or benefits. Violations include planting, harvesting or growing a prohibited plant (e.g., marijuana, opium poppies and other drug producing plants).

DESIGNATION BY LANDOWNER: When land with contract acres is sold, those contract acres normally transfer with the land to the new owner based on a cropland ratio. However, the landowner and purchaser can agree to divide the contract acres in any manner that is mutually agreeable. To use this designation by landowner method, the land sold must have been owned for at least three years and the owner and purchaser must sign a memorandum of understanding designating contract acres before completing the sale. If you have questions, please contact our office for details before selling your land.

RECORD CHANGES: Participation in FSA farm programs requires all records to be accurate and up to date. It is the producer's responsibility to inform FSA of changes to his/her farming operation including, but not limited to: land ownership changes, adding or dropping a tract of land (leases), entity type or ID number changes, marriage, divorce, deaths or changes in your financial institution for direct deposit. A copy of the deed must be submitted for ownership changes; copies of written lease agreements must be submitted for all cash leases.

DEBT COLLECTION IMPROVEMENT ACT OF 1996: The DCIA provides, among other things, that a person owing a delinquent nontax debt to the Federal Government is ineligible for Federal financial assistance, including direct loans (other than disaster loans) or loan insurance or guarantee. The Agriculture, Rural Development, Food and Drug Administration and Related Agencies Appropriations Act, 2001 amended DCIA to exclude marketing assistance loans or loan LDP's from the restrictions on barring delinquent Federal debtors from obtaining Federal loans or loan guarantees. Proceeds received from MAL's and LDP's will be offset against any delinquent debt owed by the producer to FSA. Proceeds from MAL's and LDP's to producers who are members of corporations, partnerships or other entities will be offset against the producer's pro rata share of entity payments after notification of the intent to offset has been provided to the nonborrower entities.

CIVIL RIGHTS / DISCRIMINATION PROCESS: As a participant in or applicant for programs or activities operated or sponsored by USDA, you have the right to be treated fairly. If you believe you have been discriminated against because of your race, national origin, gender, age, religion, disability or marital or familial status, you

may file a discrimination complaint. The complaint should be filed with the USDA Office of Civil Rights within 180 days of the date you became aware of the alleged discrimination. To file a complaint of discrimination, write USDA, Director, Office of Civil Rights, 1400 Independence Avenue, SW, Room 326-S.W., Whitten Building, Stop 9410 Washington DC 20250-9410 or call (202) 720-5964 (voice or TDD). USDA is an equal opportunity provider and employer.

FRAUD MAY LEAD TO DISQUALIFICATION: Producers found to have committed crop insurance fraud are ineligible for a number of programs administered by FSA and CCC. Any person found to have committed fraud will receive a notice and will have an opportunity for a hearing on the record. The person may be disqualified from receiving any benefits under a number of programs for a period of up to 5 years. Other sanctions may also apply.

FOREIGN LANDOWNER NOTIFICATION: The Agricultural Foreign Investment Disclosure Act (AFIDA) requires all foreign owners of U.S. agricultural land to report their holdings to the Secretary of Agriculture through FSA. Failure to submit the AFIDA form within 90 days of closing could result in civil penalties of up to 25% of the fair market value of the property. It is the foreign person's responsibility to report the land transactions.

GOODBYE, JULIE!

Julie Zentner has accepted a position with Agriform Inc. Yolo County Committee members and staff extend their thanks for her outstanding efforts on behalf of Yolo County farmers and ranchers.



UNITED STATES DEPARTMENT OF AGRICULTURE
Yolo County Farm Service Agency
221 West Court Street Suite 3B
Woodland, CA 95695

IMPORTANT DATES

6/15/09	COC LAA-2 nomination period begins
7/03/09	Office closed in observance of Independence Day
7/15/09	2009 spring-seeded acreage reporting deadline
8/01/09	NAP ACD* – 2010 fall-planted seed and multi-planting crops
8/03/09	Deadline to submit COC LAA-2 nomination forms
8/14/09	Deadline to submit all signatures for and to revise shares on 2009 DCP Contracts and to make 2009 – 2012 ACRE elections
9/01/09	NAP ACD* – 2010 garbanzo beans, forage seed, mechanically harvested forage, value loss and controlled environment crops
9/07/09	Labor Day – office closed
10/01/09	NAP ACD* – 2010 fall-planted garlic
10/12/09	Columbus Day – office closed
11/06/09	COC LAA-2 ballots mailed to eligible voters
11/11/09	Veterans Day – office closed
11/26/09	Thanksgiving Day – office closed
12/01/09	NAP ACD* – 2010 onions, forage and honey
12/07/00	Deadline to return completed COC LAA-2 election ballots to county office
12/15/09	NAP ACD* – 2010 fruit and nut trees, asparagus and artichoke
12/25/09	Christmas Day – office closed
1/01/10	NAP ACD* – 2011 avocado and citrus New Year's Day – office closed New COC members take office

*Application Closing Date

The United States Department of Agriculture (USDA) prohibits discrimination in its programs on the basis of race, color, national origin, sex, religion, age, disabilities, political beliefs and marital or familial status. (Not all prohibited bases apply to all programs.) Persons with disabilities who require alternative means for communication of program information (Braille, large print, audio type, etc.) should contact the USDA's TARGET Center at (202) 702-2661 (voice and TDD). To file a complaint, write the Secretary of Agriculture, U.S. Department of Agriculture, Washington, D.C. 20250 or call (800) 245-6340 (voice) or (202) 720-1127 (TDD). USDA is an Equal Opportunity Employer.