

June 3, 2014

### **Public Notice for LAA Election**

The Hunterdon Somerset County FSA Committee election for Local Administrative Area (LAA) 1 and LAA 2 will be held this year on December 1, 2014. LAA 1 consists of Alexandria, Holland, and Kingwood Townships in Hunterdon County, LAA 2 consists of Bethlehem, Clinton, Franklin, Lebanon, and Union Townships in Hunterdon County. Eligible voters have the right to nominate candidate(s) of their choice. Nomination forms may be obtained at the Hunterdon Somerset County Farm Service Agency (FSA) Office. Each form submitted must be:

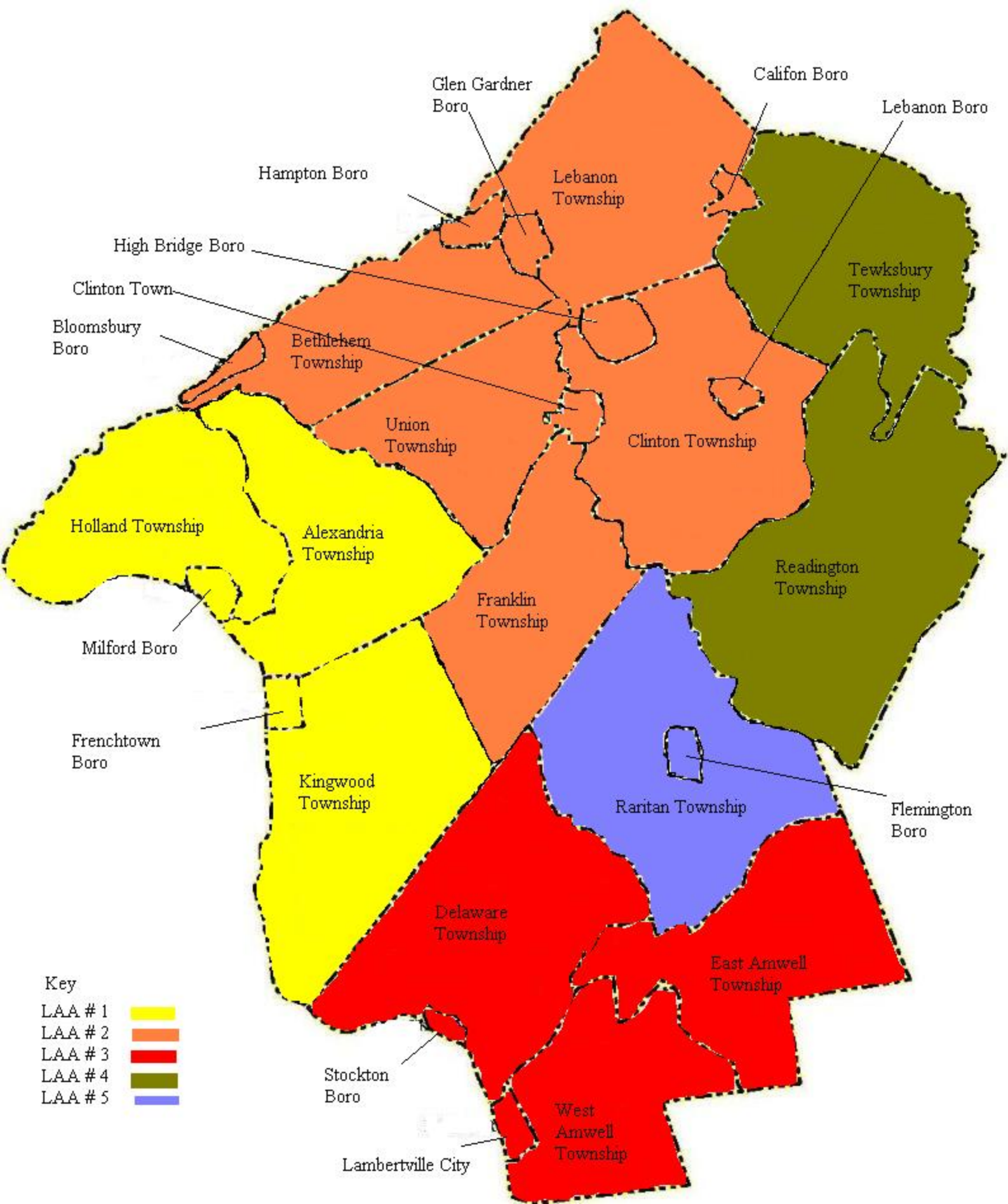
- Limited to one (1) nominee
- Signed by the nominee, indicating willingness to serve, if elected
- Postmarked or delivered to the Hunterdon Somerset County FSA Office no later than August 1, 2014

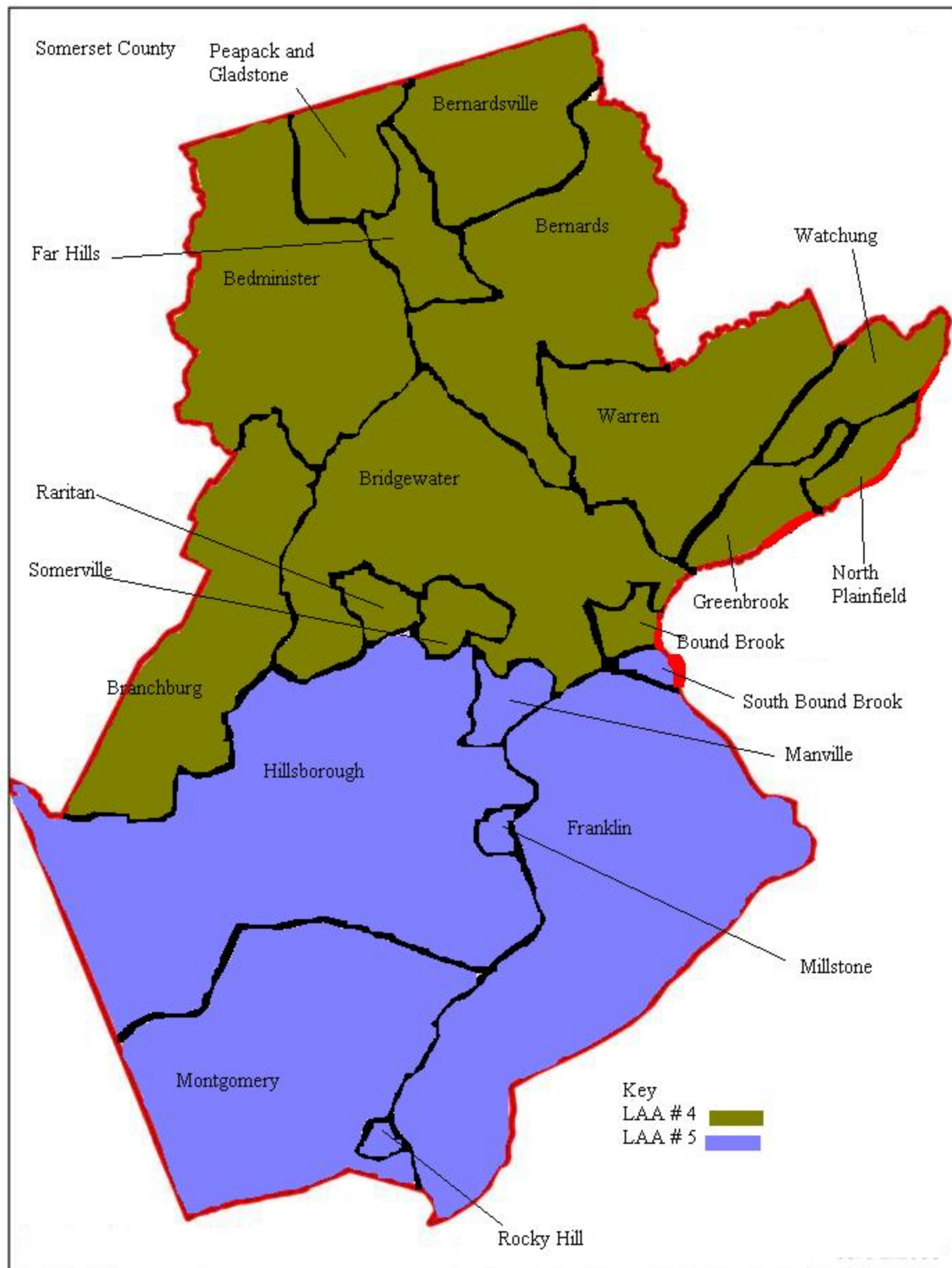
Any nominee should be currently engaged in the operation of a farm or ranch and be well qualified for committee work.

A producer is eligible to be a Hunterdon Somerset County Committee member if the producer lives in the LAA up for election and is an eligible voter. **COUNTY FSA COMMITTEE MEMBERS MAY NOT HOLD POSITIONS IN CERTAIN FARM AND COMMODITY ORGANIZATIONS IF THESE POSITIONS POSE A CONFLICT OF INTEREST WITH FSA DUTIES.** These positions include functional offices such as president, secretary, and positions on boards or executive committees. Additional information of eligibility to hold office may be obtained at the Hunterdon Somerset County FSA Office.

The duties of a Hunterdon Somerset County FSA Committee member include:

- Informing farmers and ranchers of the purpose and provisions of the FSA programs
- Keeping the New Jersey State FSA Committee informed of LAA conditions
- Recommending needed changes in farm programs
- Participating in Hunterdon Somerset County FSA meetings, as necessary
- Performing other duties as assigned by the New Jersey State FSA Committee







## COUNTY COMMITTEE ELECTIONS

Each summer, it's time to nominate and then vote for farmers to serve on the Farm Service Agency County Committees across the state. FSA urges all producers to seriously consider running for a term on the County Committee.

### Important dates for this year's election

- ✓ Now - Request nomination forms from the local FSA office and begin making nominations.
- ✓ August 1, 2014 - Last day to file nomination forms with the FSA office.
- ✓ November 3, 2014 - Ballots mailed to eligible voters.
- ✓ December 1, 2014 - Last day to return voted and signed ballots to the FSA office.
- ✓ January 1, 2015 - Elected committee members and alternates take office.

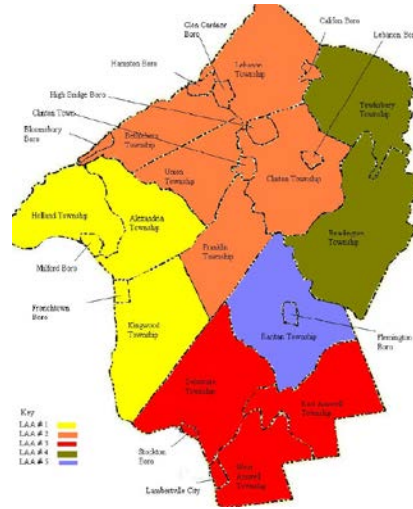
Nominees are only being requested from:

LAA 1	LAA 2
Hunterdon County Alexandria Township	Hunterdon County Bethlehem Township
Holland Township Kingwood Township	Clinton Township Franklin Township Lebanon Township Union Township

The U.S. Department of Agriculture (USDA) prohibits discrimination in all its programs and activities on the basis of race, color, national origin, gender, religion, age, disability, political beliefs, sexual orientation, and marital or family status. (Not all prohibited bases apply to all programs.) Persons with disabilities who require alternative means for communication of program information (Braille, large print, audiotape, etc.) should contact USDA's TARGET Center at 202-720-2600 (voice and TDD).

To file a complaint of discrimination, write USDA, Director, Office of Civil Rights, Room 326-W, Whitten Building, 1400 Independence Avenue, SW, Washington, D.C., 20250-9410, or call (202) 720-5964 (voice or TDD).

USDA is an equal opportunity provider and employer.



## 2014 New Jersey County Committee Elections



Paul J. Hlubik, New Jersey Farm Service Agency State Executive Director, has announced that ***nominations are being accepted now*** for available positions on the county committees throughout the state. ***The deadline to submit the nomination form is August 1, 2014.*** Voting by the farmers within designated areas will be held later this year and the results will be announced in early 2012. **Women and minorities involved in farming are encouraged to apply.** Anyone interested in learning more about the Farm Service Agency, may visit [www.fsa.usda.gov/pas/default.asp](http://www.fsa.usda.gov/pas/default.asp) or [www.fsa.usda.gov/nj](http://www.fsa.usda.gov/nj)



# WHAT IS FSA?

The mission of the Farm Service Agency (FSA) of the U.S. Department of Agriculture is to help ensure the well-being of American agriculture and the American public through efficient and equitable administration of the following programs:

- Farm commodity
- Farm loan
- Conservation
- Crop Insurance
- Emergency assistance
- Domestic and international food assistance

FSA strives to provide friendly and efficient customer service to enhance the ability of the small, limited-resource, beginning, and socially disadvantaged family farmers and ranchers to operate successfully. FSA also provides innovative leadership to improve and reduce the cost of operations and services.

FSA is responsible for:

- Supporting commodity prices and producer income, through loans to producers, purchases, and direct payments;
- Balancing supply and demand for certain commodities;
- Providing emergency and non-insured assistance programs;
- Conserving production resources and protecting the environment, through cost-sharing and conservation reserve contracts with producers; and
- Providing a program of supervised credit and loan guarantees to ensure credit is available to farmers unable to obtain funds to operate a successful farm business

# FSA COUNTY COMMITTEES

County offices administer all FSA programs. The County Committee (COC) is a grassroots approach to give farmers and ranchers a much-needed say in how federal actions affect their communities and individual operations. The COC is accountable to the State Committee (STC); oversees the work of the county office and the County Executive Director (CED) who manages the county office; and acts in an advisory capacity to the Farm Loan Manager (FLM)

The County Committee system goes back to the 1930s, when Congress set up a system in which federal farm programs were administered locally. The members on County Committees are nominated and elected by local producers who are eligible to participate in FSA programs.

The COC is democracy in action. Once elected by their peers to the committee, local producers make important decisions about how FSA programs will be carried out in the county. They are a direct link between the farm community and the U.S. Department of Agriculture. The COC also acts as a board of directors for the county office.

Each COC consists of three to five members. The committee may also include advisors who are appointed by the State Committee to advocate for underrepresented groups and assist in outreach activities. The COC must see that programs are consistent with federal law, regulations, policies, procedures, and instructions.

The COC has four major areas of responsibility:

- Producers
- Programs
- Public information/outreach
- Equal opportunity

Committees make decisions on:

- Commodity price support loans and payments;
- Establishment of yields; conservation programs; and
- Incentive, indemnity, and disaster payments for some commodities; and other farm disaster assistance.

To carry out its responsibilities, the County Committee:

- Hires and supervises the CED;
- Reviews work plans, operations, and finances;
- Performs field duties in special cases;
- Hears requests for reconsiderations or appeals of county decisions; and
- Makes recommendations to the State Committee

## WHO CAN VOTE

Farm owners, operators, tenants, and sharecroppers of legal voting age can vote if they are eligible to take part in *any* FSA program. Check with your local FSA office for more information.

## NOMINATIONS

A nomination form signed by the nominee is needed to nominate a farmer-candidate. The form includes a statement that the candidate agrees to serve if elected. Nomination forms must be received in the local office by **August 1, 2014**.

Almost anyone eligible to take part in a local FSA program may be a candidate for the committee.

Nomination forms are available at your local county office or on the Internet: [www.fsa.usda.gov](http://www.fsa.usda.gov)

## DON'T MISS OUT ON VOTING

The **2014** election will end **December 1<sup>st</sup>**. Ballots will be mailed to voters by **November 3<sup>rd</sup>**. They must be completed and signed, then return them to the FSA county office by **December 1<sup>st</sup>**.