



Weston County  
USDA Service  
Center

Weston County FSA  
1225 Washington  
Blvd. Suite 2  
Newcastle, WY  
82701  
(307) 746-2701

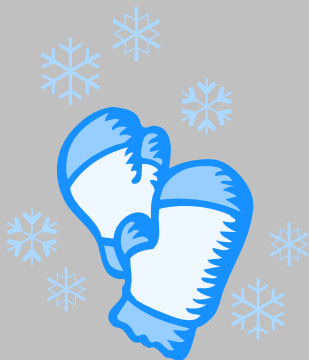
Office Hours:  
Monday - Friday  
8:00 am – 4:30 pm  
[www.fsa.usda.gov](http://www.fsa.usda.gov)

#### County Committee

Doug Materi,  
Chairman  
Monte Hamilton,  
Vice Chairman  
Ann Wehri,  
Member

#### Staff

Peggy Livingston,  
County Executive  
Director  
JoAnn Stearns,  
Program Technician  
Rob Weppner,  
Farm Loan Manager



USDA is an equal  
Opportunity provider and  
employer

# Weston County News

January 2010

## Happy New Year!

### LDP Deadline For Wool, Mohair, and Unshorn Lamb Pelts

Eligible producers have until **February 1, 2010** to apply for Loan Deficiency Payments (LDP) for unshorn pelts, wool, and mohair produced during the 2009 crop year. Eligible producers must have beneficial interest in the pelts, owned the lamb for at least 30 calendar days before the date of slaughter and sell the unshorn lamb for immediate slaughter.

### 2010 NAP Deadline

Beginning with the 2010 crop year there will be a single application closing date of April 1<sup>st</sup> for all NAP crops in all counties in Wyoming. The deadline to purchase 2010 NAP coverage is **April 1, 2010**. The April deadline will remain in effect for subsequent years.

### 2009 LIP and ELAP Application for Payment Deadline

The loss application procedure for ELAP and LIP is a two-part process. Producers who have a Notice of Loss on file at the county office have until **February 1, 2010** to file their Application for Payment for 2009 losses.

### Supplemental Revenue Assistance Payments (SURE) Program

Signup for the SURE Program for **2008 crop losses will begin January 4, 2010**. SURE is available to eligible producers on:

- Farms in counties with Secretarial disaster declarations, including contiguous counties that have incurred crop production losses and/or crop quality losses during the crop year.
- Any farm in which, for the crop year, the actual production on the farm because of disaster-related conditions is 50 percent or less than the normal production of the farm.

At a minimum, to be eligible for the SURE Program, the producer must have purchased or be enrolled in the following for the 2008 crop year:

- A plan of crop insurance of at least catastrophic (CAT) level for all insurable crops
- And/or Non-insured Crop Disaster Assistance Program (NAP) coverage for all non-insurable crops.

**Note: RMA crop Insurance or NAP coverage on grazing land does not have to be purchased in order to be eligible for SURE. SURE does not pay for losses on crops intended for grazing.**

## **ANNUAL FSA NOTIFICATIONS**

FSA is required to annually notify producers of many program requirements, policies, and reminders. The following are some of those notifications:

**Foreign Buyers Notification:** The Agricultural Foreign Investment Disclosure Act (AFIDA) requires all foreign owners of United States agricultural land to report their holdings to the Secretary of Agriculture. FSA administers this program for USDA. Foreign persons who have purchased or sold agricultural land are required to report the transaction to FSA within 90 days of the closing. Failure to submit the AFIDA form could result in civil penalties up to 25% of the fair market value of the property.

County government offices, realtors, attorneys and others involved in real estate transactions are reminded to notify foreign investors of these reporting requirements.

**Foreign Person Rule:** A foreign individual is someone who is not a citizen of the United States or a lawful alien possessing a valid Alien Registration Receipt Card (Form I-551 or I-151). A foreign entity is a corporation, trust, estate, limited partnership, limited liability company, or other similar organization that has more than 10 percent of its beneficial interest held by individuals who are not citizens of the United States or lawful aliens possessing a valid Alien Registration Receipt Card (Form I-551 or I-151). In addition to the requirements for "person" and "actively engaged in farming," the following significant contributions must be provided by an individual or entity considered to be a "foreign person." An individual determined to be a "foreign person" must provide a significant contribution of land, capital, and active personal labor. Each foreign individual who is a member of an entity determined to be a "foreign person" must provide active personal labor to enable the entity to provide a significant contribution of active personal labor.

**Special Accommodations:** Special accommodations will be made upon request for individuals with disabilities, vision impairment or hearing impairment. If accommodations are required, individuals should contact the county FSA office staff directly or by phone.

**Under-Represented Groups:** FSA solicits and accepts nominations of under-represented groups such as females and minority (American Indian or Alaska Native, Asian, Black/African American, Hispanic/Latino, Native Hawaiian or Other Pacific Islander) producers for county committee representation.

**Power of Attorney:** For those who find it difficult to visit the county office personally because of work schedules, distance, health, etc., we have a power of attorney form available that enables you to designate another person to conduct your business at the office. If you are interested, please contact our office or any Farm Service Agency office near you for more information. If you want a crop loan, a power of attorney form will need to be completed for husband and wife, if both do not come into the office to sign the forms on the day the loan is disbursed.

**Change in Farming Operation or Address:** Producers are reminded to notify this office to report change in address or ownership. This is vital to assist this office in keeping records.

**Change in Direct Deposit Account:** The Debt Collection Act of 1996 mandates that payments from FSA be directly deposited into a producer's checking or savings bank account. It is important that any change in the producer's account such as type of account, bank mergers, routing number or account numbers be provided to the county office promptly to avoid possible payment delay.

**Controlled Substance:** Any person who is convicted under federal or state law of a controlled substance may be ineligible for USDA payments or benefits. Violations include planting, harvesting, possessing or growing a prohibited plant. Prohibited plants include marijuana, opium poppies and other drug producing plants.

**Spousal Signature:** A husband and wife may sign documents on behalf of each other for FSA and Commodity Credit Corporation (CCC) programs in which either has an individual interest. This option is automatically available unless a written request for exclusion is made to the county office from either spouse. Exceptions include claim settlements, power of attorney forms and signatory authority for an entity.

**FSA Appeal Process:** After an FSA official makes a decision on your request for USDA services or application, you will be sent a letter informing you of the decision and options you can pursue if you disagree. Generally, program participants have three choices — an informal review with the original agency decision-maker, an opportunity for mediation and appeal to the USDA National Appeal Division.

**Cash-rent Tenant:** A cash-rent tenant rule applies to any producer that rents land from another producer for cash or a crop share guaranteed as the amount of the commodity to be paid in rent. The rule also applies to any producer who rents land for zero dollars or who farms the land in exchange for compensation other than cash, such as controlling weeds on land not owned, or barter arrangements. Any cash-rent tenant shall be ineligible to receive payment unless the cash-rent tenant makes a significant contribution of active personal labor to the farming operation; or a significant contribution of active personal management **and** a significant contribution of equipment. A cash-rent tenant must also meet all applicable requirements to be considered “actively engaged in farming.”

**Submission of Applications via E-Government:** As required by the Freedom to E-File Act, USDA provides customers with the option to electronically access, fill out, and print paper forms and transmit those forms and other documents to their local Service Center. Customers may also obtain secure payment summary information. A secure website is offered. Log on to:

<http://www.eauth.egov.usda.gov>

if you wish to register for a Customer ID and password.

**Farm Loan Programs:** The Farm Service Agency (FSA) offers loans for farmers and ranchers to purchase farmland and finance agricultural operations. FSA loan programs are designed to help producers who are temporarily unable to obtain private or commercial credit.

**FSA Farm Loans Available To Beginning Farmers or Ranchers:** Beginning farmers or ranchers may obtain a farm ownership loan by using funds set aside especially for them by the Farm Service Agency. These loans can be financed up to the \$300,000 loan limit, and the term of the loan can be up to 40 years.

Farm ownership loan funds may also be used in joint financing where FSA lends up to 50 percent of the amount financed and another lender provides 50 percent or more.

/s/ **Peggy M. Livingston,**  
County Executive Director

**Loans for Socially Disadvantaged:** The Farm Service Agency (FSA) can make and guarantee loans to socially disadvantaged applicants to buy and operate family size farms and ranches. Funds specifically for these loans are reserved each year. A socially disadvantaged farmer or rancher is one of a group whose members have been subjected to racial, ethnic, or gender prejudice because of their identity as members of the group without regard to their individual qualities. Socially disadvantaged groups include women, African Americans, American Indians, Alaskan Natives, Hispanics, and Asians and Pacific Islanders. Contact you local FSA Farm Loan Manager for more details and assistance in applying.

**Honey Loans:** Marketing assistance loans and loan deficiency payments for 2009 crop year honey are available until **March 31, 2010**. Market prices currently exceed the loan rate; so LDPs are not available right now.

To be eligible for a loan, the producer must have produced honey in the United States during the calendar year for which the loan is requested, and extracted the honey on or before Dec. 31 of the applicable crop year; have continuous beneficial interest in the honey through date of repayment of the loan; and been responsible for the financial risk of keeping the honey. Producers are responsible for maintaining the quality of farm-stored honey during the term of the loan.

**Applications for FSA Loans:** Farmers and ranchers that intend to apply to the Farm Service Agency for loan assistance for the upcoming crop year are encouraged to file their applications as early as possible. Filing early will help ensure that your loan is processed and approved as early as possible so that planting decisions can be made. Failure to apply early can result in a delay in processing loans due to the volume of applications that must be processed in date order. Contact you local FSA farm loan manager or officer for more details and assistance in applying.

**Faxed Signatures:** Certain faxed signatures shall be accepted for all applicable program forms or other documents approved for faxed signatures, if all other requirements are met.

Special Accommodations will be made for the physically handicapped, vision- or hearing-impaired person upon request. If accommodations are required, please call Peggy Livingston, CED at (307)746-2701

UNITED STATES DEPARTMENT  
OF AGRICULTURE  
Weston County FSA  
1225 Washington Blvd  
Newcastle, WY 82701

Return Service Requested

<b>Selected Interest Rates for January 2010</b>	
Farm Operating - Direct	2.875%
Farm Ownership - Direct	4.75%
Farm Ownership - Direct Down Payment, Beginning Farmer or Rancher	1.50%
Emergency	3.75%
Farm Storage Facility	%
Commodity Loans 1996-Present	%

**IMPORTANT DATES TO REMEMBER**

**January 4, 2010 – Sign up for SURE Program begins**

**February 1, 2010 – Application for Payment Deadline for LIP and  
ELAP**

**February 1, 2010 – Final Loan/LDP availability for 2009 Wool/Mohair**

**February 1, 2010 – Final loan/LDP availability for 2009 Unshorn  
Pelts**

**February 15, 2010 – George Washington’s Birthday – Office Closed**

**March 15, 2010 – Federal Crop Insurance deadline for Spring Crops**

**April 1, 2010 – Application deadline for all NAP crops**

**For more information on any Farm Service Agency program, visit or call our office, or visit the FSA Homepage at  
[www.fsa.usda.gov](http://www.fsa.usda.gov)**