



“The USDA Farm Service Agency continues to support Massachusetts agriculture with programs and loan opportunities for our producers. Through the work of our local offices, the agency has been able to provide timely assistance to farmers to help their operations stay viable over the past year.”

- Jonathan D. Niedzielski, State Executive Director

Commodity Program Payments: \$126,604

Massachusetts producers received substantial monetary support during FY 2015 in the form of commodity and price support program payments.

\$2,389 - Direct and Counter Cyclical Program

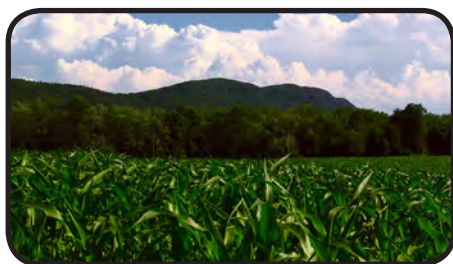
(DCP) Direct payments provided income support to producers of eligible commodities based on production history (acreage and yields) and do not depend on the current production choices. Counter-cyclical payments were made when the effective price for eligible commodities is less than the target price.

\$77,163 - Average Crop Revenue Election Program

(ACRE) provided revenue-based payments as an alternative to receiving price-based counter-cyclical (CC) payments.

\$39,810 - Commodity Loans are available to eligible producers who use crops as collateral. The Commodity Credit Corporation (CCC) makes loans for eligible commodities that are farm or warehouse stored.

\$2,834 - Margin Protection Program (MPP-Dairy) offers protection when the difference between the all milk price and the average feed cost (the margin) falls below a certain dollar amount selected by the producer.

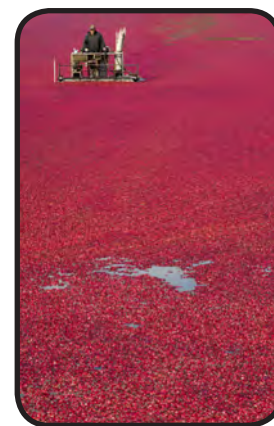


\$104 - Milk Income Loss

Contract (MILC) provided compensation to dairy producers when domestic milk prices fall below a specified level.

\$1,070 - Trade Adjustment

Assistance (TAA) provides technical assistance and cash payments to producers of products that were adversely affected by imports.



Top 5 Massachusetts agriculture commodities, 2014

	Value of receipts thousand	Percent of state total farm receipts	Percent of US value
1. Misc. crops	178,279	38.9	1.0
2. Cranberries	75,523	16.5	29.7
3. Dairy products	60,291	13.2	0.1
4. All other animal products	39,338	8.6	0.7
5. Turkeys	22,047	4.8	0.4
All commodities	458,308		0.1

Top 5 Massachusetts agriculture exports, estimates, 2014

	Rank among states	Value million \$
1. Other plant products	33	117.8
2. Fruits, fresh	15	23.5
3. Fruits, processed	15	21.1
4. Other livestock products	42	20.3
5. Dairy products	39	8.7
Overall rank	45	209.8

Source: www.ers.usda.gov

Conservation: \$27,806

FSA made significant investments toward conserving and improving soil, water, and wildlife resources in Massachusetts. Conservation investments in FY 2015 include:

\$2,052 - Conservation Reserve Program

(CRP) provides financial incentives, cost-share and rental payments to producers who convert highly erodible cropland or environmentally sensitive acreage to long-term vegetative cover.

\$25,000 - Grassland Reserve Program (GRP) is a voluntary program designed to protect grasslands from conversion to cropland or other uses.



Disaster Assistance: \$806,163

From drought to flood, freeze and tornadoes - FSA was financially responsive to Massachusetts producers following natural disasters.



\$162,941 - Non-Insured Crop Disaster Assistance Program (NAP) provides financial assistance to producers of noninsurable crops when low yields, loss of inventory, or prevented planting occurs due to natural disasters.

\$9,720 - Livestock Indemnity Program (LIP) provides partial reimbursements to eligible livestock owners for livestock losses suffered due to a natural disaster or other emergency.

\$609,217 - Emergency Assistance for Livestock, Honeybees and Farm-Raised Fish Program (ELAP) provides emergency assistance to eligible producers of livestock, honeybees and farm-raised fish that have losses due to disease, adverse weather or other conditions.

Farm Loans: \$12,930,520

FSA offers various loan options to Massachusetts farmers and growers who manage family-sized operations and who were temporarily unable to obtain private or commercial credit.

\$7,874,210 - Guaranteed Loan Program FSA guarantees loans made by conventional agricultural lenders for up to 95 percent of any loss if the loan fails. In FY 2015, FSA guaranteed 11 farm ownership loans and 11 operating loans including five loans to beginning farmers and one loan to a socially disadvantaged producer.

\$4,350,840 - Direct Loan Program FSA provides assistance to those unable to obtain guaranteed loans. In FY 2015, FSA funded nine farm ownership loans and 67 operating loans, including four youth loans, 38 loans to beginning farmers and 14 loans to socially disadvantaged producers.

\$705,470 - Microloans are direct farm operating loans with a shortened application process and reduced paperwork designed to meet the needs of smaller, non-traditional, and niche type operations. In FY 2015, 38 microloans were issued.

Massachusetts FSA Program Payments by County

Includes commodity, conservation, disaster program payments and farm loan obligations

Barnstable	\$ 506,800
Berkshire	\$ 1,716,175
Bristol	\$ 643,067
Dukes	\$ 1,573,000
Essex	\$ 102,503
Franklin	\$ 1,329,535
Hampden	\$ 1,017,760
Hampshire	\$ 881,853
Middlesex	\$ 788,329
Nantucket	\$ 750
Norfolk	\$ 4,498
Plymouth	\$ 535,032
Suffolk	\$ 0
Worcester	\$ 4,792,125

