



# Conservation Reserve Program



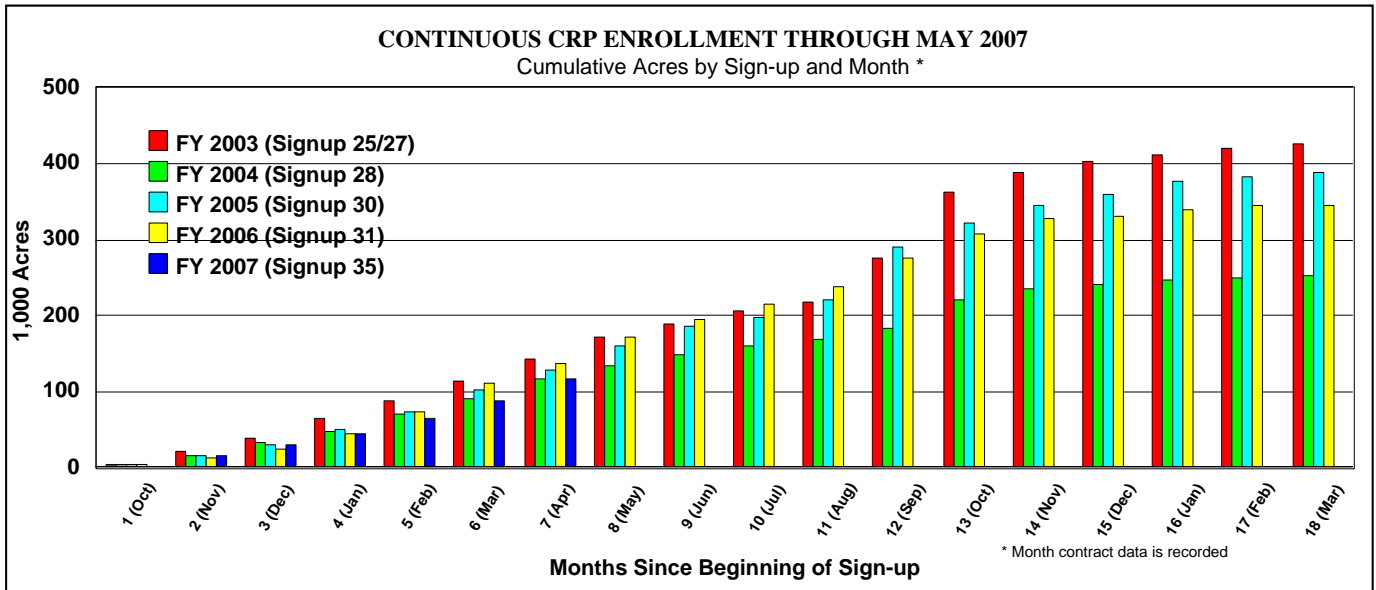
## MONTHLY SUMMARY -- MAY 2007

### CURRENT ACTIVE CONTRACTS

| Sign-up Type     | Contracts | Farms      | Acres      | Annual Rental Payments a/<br>(\$Million) | a/<br>(\$/Acre) |
|------------------|-----------|------------|------------|--|-----------------|
| General          | 426,703   | 276,208    | 32,968,835 | \$1,445                                  | \$43.83         |
| Continuous       |           |            |            |  |                 |
| Non-CREP         | 288,261   | 174,677    | 2,704,776  | \$239                                    | \$88.34         |
| CREP             | 54,413    | 36,367     | 956,771    | \$116                                    | \$121.45        |
| Subtotal         | 342,674   | 205,310 b/ | 3,661,547  | \$355                                    | \$99.99         |
| Farmable Wetland | 10,745    | 8,582      | 166,949    | \$20                                     | \$118.26        |
| Total            | 780,122   | 440,003 b/ | 36,797,332 | \$1,820                                  | \$49.45         |

a/ Approximates FY 2008 payments, before adjustments for haying/grazing, non-compliance, terminations, part-year contracts, and contracts not yet recorded.

b/ Number of farms not additive across sign-up types because farms may participate in multiple sign-up types.



| <b>CONTINUOUS SIGN-UP PROGRESS COMPARED WITH LAST YEAR</b> |                                       |                               |
|--|---------------------------------------|-------------------------------|
| Sign-up Type   | Acres Enrolled in Sign-up, Cumulative |                               |
|  | Sign-up 35 (through May 2007)         | Sign-up 31 (through May 2006) |
| Non-CREP   | 72,283                                | 96,700                        |
| CREP   | 61,530                                | 62,420                        |
| Sub-Total  | 133,813                               | 159,120                       |
| Farmable Wetland   | 7,179                                 | 13,173                        |
| Total  | 140,992                               | 172,293                       |

## ***CRP ENROLLMENT ACTIVITY AND NEWS***

- Preliminary results of last year's re-enrollment and extension (REX) offer for the 15.7 million general sign-up acres under contracts originally set to expire 9/30/2007 show contracts on 13.5 million acres (86%) are now in the active contract files as having approved new or extended contracts (see pages 4 and 16).
- Preliminary results of last year's re-enrollment and extension (REX) offer for the 12.1 million general sign-up acres under contracts originally set to expire in 2008, 2009, and 2010 show contracts on 9.2 million acres (78%) are now in the active contract files as having approved new or extended contracts (see pages 4 and 16). Results are still preliminary and subject to change.
- The new contract expiration schedule is provided (p. 17) based on preliminary results. Actual acres re-enrolling, extending, and expiring each year could still change, as data on acceptances are still being recorded.
- Since Earth Day, April 22, 2004, contracts on 199,004 acres of wetland practices (including adjacent upland buffers) have been approved. As of May 2007, wetland practices under contract (including general and continuous sign-up) total 2.07 million acres.
- FY 2007's continuous sign-up 35 is proceeding at about 18% below FY 2006's sign-up 31.
- Preliminary results for the 2006 Emergency Forestry CRP (EFCRP) sign-up show that 180,176 acres were approved for enrollment in 5 States (see p. 3). EFCRP was implemented to assist owners and operators of private non-industrial forests damaged by 2005 hurricanes, including Katrina and Rita. Forest land with at least 35 percent loss of merchantable timber in affected counties was eligible for annual or lump sum payments.
- Recently enacted legislation has re-authorized EFCRP enrollment for 2007 (and for as long as CRP enrollment is authorized).

| <b>Initiatives</b>                   | <b>Practice Code</b> | <b>In May (Acres)</b> | <b>Cumulative (Acres)</b> |
|--------------------------------------|----------------------|-----------------------|---------------------------|
| Upland bird habitat buffers          | CP33                 | 4,478                 | 157,669                   |
| Bottomland hardwood trees            | CP31                 | 699                   | 36,245                    |
| Non-flood plain and playa wetlands   | CP23a                | 203                   | 28,567                    |
| Flood-plain wetlands                 | CP23                 | 709                   | 105,560                   |
| Longleaf pine plantings              | CP36                 | 4,252                 | 6,962                     |
| Prairie pothole duck nesting habitat | CP37                 | 2,951                 | 4,102                     |

| <b>Performance Measures</b>          | <b>Practice Codes (CP's)</b> | <b>Cumulative (Acres)</b> |                | <b>Year-to-Date (Acres)</b> |
|--------------------------------------|------------------------------|---------------------------|----------------|-----------------------------|
|                                      |                              | <b>Sept 30, 2006</b>      | <b>Current</b> |                             |
| Conservation (water quality) buffers | 21,22,29                     | 1,860,336                 | 1,898,744      | 38,408                      |
| Wetland restorations                 | 9,23,23a,27,28,30,31,37      | 2,029,703                 | 2,065,068      | 35,365                      |

**CONTINUOUS CRP ENROLLMENT SINCE INCEPTION \***

Through May 2007 (Acres)

| FY            | -----By Sign-up Year----- |                |                |                  | -----Cumulative----- |         |         |           |
|---------------|---------------------------|----------------|----------------|------------------|----------------------|---------|---------|-----------|
|               | Non-CREP                  | CREP           | FWP            | Total            | Non-CREP             | CREP    | FWP     | Total     |
| 1997(#14)     | 555,000                   | 0              | 0              | 555,000          | 555,000              | 0       | 0       | 555,000   |
| 1998 (#17)    | 200,000                   | 13,000         | 0              | 213,000          | 754,000              | 13,000  | 0       | 768,000   |
| 1999 (#19)    | 218,000                   | 45,000         | 0              | 262,000          | 972,000              | 58,000  | 0       | 1,030,000 |
| 2000 (#21/22) | 253,000                   | 65,000         | 0              | 318,000          | 1,225,000            | 123,000 | 0       | 1,348,000 |
| 2001 (#23)    | 293,000                   | 140,000        | 26,000         | 459,000          | 1,518,000            | 264,000 | 26,000  | 1,807,000 |
| 2002 (#24)    | 227,000                   | 165,000        | 45,000         | 437,000          | 1,745,000            | 428,000 | 71,000  | 2,244,000 |
| 2003 (#25/27) | 294,000                   | 119,000        | 27,000         | 440,000          | 2,040,000            | 547,000 | 97,000  | 2,684,000 |
| 2004 (#28)    | 167,000                   | 67,000         | 21,000         | 255,000          | 2,207,000            | 614,000 | 118,000 | 2,939,000 |
| 2005 (#30)    | 228,000                   | 152,000        | 19,000         | 399,000          | 2,435,000            | 767,000 | 137,000 | 3,339,000 |
| 2006 (#31)    | 197,000                   | 129,000        | 23,000         | 349,000          | 2,632,000            | 896,000 | 160,000 | 3,688,000 |
| 2007 (#35)    | 72,000                    | 62,000         | 7,000          | 141,000          | 2,704,000            | 957,000 | 167,000 | 3,828,000 |
| <b>Total</b>  | <b>2,704,000</b>          | <b>957,000</b> | <b>167,000</b> | <b>3,828,000</b> |                      |         |         |           |

\* Sign-up 31 and 35 data not yet complete.

**EMERGENCY FORESTRY CRP  
PRELIMINARY RESULTS**

|                                   | Alabama      | Florida     | Louisiana    | Mississippi   | Texas        | Total         |
|-----------------------------------|--------------|-------------|--------------|---------------|--------------|---------------|
| Acceptable Acres                  | 16,801       | 2,749       | 6,456        | 143,695       | 10,475       | 180,176       |
| Plantings                         |              |             |              |               |              |               |
| Longleaf Pine-New                 | 9,567        | 856         | 265          | 13,562        | 321          | 24,571        |
| Longleaf Pine-Existing            | 2,173        | 940         | 20           | 2,095         | 43           | 5,271         |
| Bottomland Hardwood-New           | 136          | 0           | 276          | 11,355        | 186          | 11,953        |
| Bottomland Hardwood-Existing      | 1,902        | 25          | 651          | 11,790        | 2,181        | 16,549        |
| Softwood-New                      | 1,157        | 653         | 3,240        | 65,906        | 3,371        | 74,327        |
| Softwood-Existing                 | 1,610        | 212         | 551          | 18,682        | 928          | 21,983        |
| Upland Hardwood-New               | 11           | 0           | 0            | 1482          | 102          | 1,595         |
| Upland Hardwood-Existing          | 28           | 63          | 250          | 452           | 66           | 859           |
| Mixed Trees-Existing              | 216          | 0           | 1,204        | 18,371        | 3,277        | 23,068        |
| Estimated Damages 1/              |              |             |              |               |              |               |
| Total \$                          | \$12,843,608 | \$1,513,240 | \$14,674,715 | \$228,001,253 | \$17,666,552 | \$274,699,368 |
| Average %                         | 69%          | 81%         | 69%          | 74%           | 69%          | 73%           |
| Acceptable Offers (Number)        |              |             |              |               |              |               |
| Annual                            | 61           | 17          | 49           | 1,041         | 35           | 1,203         |
| Lump Sum                          | 22           | 13          | 20           | 131           | 51           | 237           |
| Total                             | 83           | 30          | 69           | 1,172         | 86           | 1,440         |
| Average Size (Acres per Contract) | 202          | 92          | 94           | 123           | 122          | 125           |
| Rental Payments                   |              |             |              |               |              |               |
| Annual                            | \$790,983    | \$42,097    | \$116,015    | \$3,407,762   | \$190,929    | \$4,547,786   |
| Lump Sum                          | \$847,809    | \$496,793   | \$436,935    | \$3,558,102   | \$729,715    | \$6,069,354   |
| Total (10*Annual+Lump Sum)        | \$8,757,639  | \$917,763   | \$1,597,085  | \$37,635,722  | \$2,639,005  | \$51,547,214  |
| Average Per-Acre Rental Payment   | \$52.13      | \$33.39     | \$24.74      | \$26.19       | \$25.19      | \$28.61       |

1/ Economic loss due to hurricanes.

**RE-ENROLLMENT AND EXTENSION OF 2007-2010 EXPIRING CONTRACTS  
PRELIMINARY RESULTS 1/**

**Eligible Acres**

| REX Tier     | 2007              | 2008             | 2009             | 2010             | Total             |
|--------------|-------------------|------------------|------------------|------------------|-------------------|
| 2-Year       | 3,151,630         | 1,160,262        | 821,658          | 450,302          | 5,583,851         |
| 3-Year       | 3,171,161         | 1,120,857        | 820,728          | 379,285          | 5,492,030         |
| 4-Year       | 3,052,570         | 1,539,965        | 805,123          | 392,464          | 5,790,122         |
| 5-Year       | 3,125,049         | 888,150          | 852,689          | 396,918          | 5,262,806         |
| Re-enroll    | 3,185,900         | 1,184,094        | 841,017          | 435,724          | 5,646,734         |
| <b>Total</b> | <b>15,686,311</b> | <b>5,893,328</b> | <b>4,141,214</b> | <b>2,054,693</b> | <b>27,775,545</b> |

**Acres With Paid Compliance Fees**

| REX Tier     | 2007              | 2008             | 2009             | 2010             | Total             |
|--------------|-------------------|------------------|------------------|------------------|-------------------|
| 2-Year       | 2,926,050         | 1,013,599        | 692,656          | 354,436          | 4,986,741         |
| 3-Year       | 2,870,916         | 969,521          | 677,096          | 300,140          | 4,817,673         |
| 4-Year       | 2,684,285         | 1,325,772        | 650,589          | 310,457          | 4,971,103         |
| 5-Year       | 2,685,706         | 750,921          | 714,198          | 299,080          | 4,449,905         |
| Re-enroll    | 2,696,175         | 1,006,523        | 638,565          | 307,702          | 4,648,965         |
| <b>Total</b> | <b>13,863,132</b> | <b>5,066,336</b> | <b>3,373,104</b> | <b>1,571,815</b> | <b>23,874,387</b> |

**Acres With Approved Extensions or New Contracts**

| REX Tier     | 2007              | 2008             | 2009             | 2010             | Total             |
|--------------|-------------------|------------------|------------------|------------------|-------------------|
| 2-Year       | 2,862,703         | 931,313          | 652,346          | 325,789          | 4,772,751         |
| 3-Year       | 2,796,069         | 902,697          | 630,008          | 266,234          | 4,595,008         |
| 4-Year       | 2,590,651         | 1,209,526        | 595,869          | 264,736          | 4,660,782         |
| 5-Year       | 2,683,651         | 729,261          | 746,661          | 291,623          | 4,451,196         |
| Re-enroll    | 2,586,192         | 828,608          | 593,662          | 263,054          | 4,271,516         |
| <b>Total</b> | <b>13,519,266</b> | <b>4,601,405</b> | <b>3,218,546</b> | <b>1,411,436</b> | <b>22,750,653</b> |

1/ Data as of May 2007.

Eligible Acres: Only land under general sign-up contracts were eligible. Expiring continuous sign-up acres will be eligible for re-enrollment in the year contracts expire.

Compliance Fee: A fee of between \$50 and \$500 depending on acreage under contract was charged to cover expenses. A paid fee was only a pre-requisite for re-enrollment or extension.

Approvals: These acres represent acres under approved new contracts or extensions, as recorded in the CRP contract database as of the month noted. The amounts are still subject to change.

---

**General Signup.** Producers with eligible lands compete nationally for acceptance based on an environmental benefits index (EBI) during specified enrollment periods. Producers may submit offers below soil-specific maximum rental rates and select wildlife-enhancing vegetative covers to increase EBI ranking.

**Continuous (Non-CREP) Sign-up.** Producers with eligible lands may enroll certain high priority conservation practices, such as filter strips and riparian buffers, at any time during the year without competition. In addition to annual soil rental payment and cost-share assistance, many practices are eligible for additional annual and one-time up-front financial incentives. Land enrolled under various initiatives are included in this category.

**Conservation Reserve Enhancement Program (CREP).** Under CREP agreements, Federal/State partnerships, implement projects designed to address specific environmental objectives through targeted CRP enrollments. Sign-up is held on a continuous basis, general sign-up practices may be included, and additional financial incentives are generally provided. There are 39 agreements currently in effect in 30 States.

**Farmable Wetland Program (FWP).** Producers enroll small non-flood plain wetlands under modified continuous sign-up provisions.

---

The accompanying tables are based on contract data developed and maintained in CRP data files by USDA Service Centers through May 2007, and are based on the physical location of the CRP contracted land. Some adjustments have been made to correct mis-coded data in the active contract files. Farmable Wetland Program contracts are not included in the continuous sign-up tables.

Page

|  |       |
|--|-------|
| Wetland Practices in CRP .....                                       | 6     |
| Current Enrollment by Sign-up and Initial Contract Year              |       |
| • Acres .....  | 7     |
| • Number of Contracts .....  | 7     |
| Current Enrollment by State and Sign-up Type                         |       |
| • Total CRP .....  | 8     |
| • General Sign-up .....  | 9     |
| • Total Continuous/CREP .....  | 10    |
| • Continuous CREP .....  | 11    |
| • Continuous Non-CREP .....  | 12    |
| • Farmable Wetland .....   | 13    |
| Continuous/CREP Activity by State (Change from Previous Month) ..... | 14    |
| Continuous/CREP Enrollment Since Inception .....                     | 15    |
| Re-Enrollment and Extension (REX) Results for 2007-Expirations ..... | 16    |
| Contract Expirations by Year .....                                   | 17    |
| Conservation Practices Currently Installed by State .....            | 18-21 |
| Conservation Practices Currently Installed, National .....           | 22    |

---

**\*\* Data from Arizona, Hawaii, Nevada, and Rhode Island not reported because of confidentiality concerns (less than 4 contracts in State). Data from these States are included in the totals.**

**WETLAND PRACTICES IN CRP AS OF MAY 2007 (ACRES) 1/**

| STATE          | GENERAL<br>(CP23) | FLOOD-<br>PLAIN.<br>(CP23) | NON-<br>FLOODPLAIN<br>(CP23A) | FARMABLE<br>WETLAND<br>(CP27&CP28) | BOTTOMLAND<br>TREES<br>(CP31) | DUCK<br>NESTING<br>(CP37) | OTHER<br>WETLAND 2/ | TOTAL     |
|----------------|-------------------|----------------------------|-------------------------------|------------------------------------|-------------------------------|---------------------------|---------------------|-----------|
| ALABAMA        | 73                | 0                          | 0                             | 0                                  | 754                           | 0                         | 172                 | 999       |
| ALASKA         | 0                 | 0                          | 0                             | 0                                  | 0                             | 0                         | 331                 | 331       |
| ARKANSAS       | 13,703            | 10,280                     | 249                           | 0                                  | 5,127                         | 0                         | 1,087               | 30,446    |
| CALIFORNIA     | 5,105             | 0                          | 0                             | 0                                  | 0                             | 0                         | 189                 | 5,293     |
| COLORADO       | 1,077             | 0                          | 39                            | 0                                  | 0                             | 0                         | 33                  | 1,148     |
| CONNECTICUT    | 0                 | 0                          | 0                             | 0                                  | 0                             | 0                         | 0                   | 0         |
| DELAWARE       | 0                 | 81                         | 0                             | 0                                  | 0                             | 0                         | 691                 | 771       |
| FLORIDA        | 0                 | 0                          | 0                             | 0                                  | 0                             | 0                         | 0                   | 0         |
| GEORGIA        | 321               | 0                          | 0                             | 0                                  | 25                            | 30                        | 25                  | 401       |
| IDAHO          | 1,432             | 0                          | 0                             | 0                                  | 0                             | 0                         | 381                 | 1,813     |
| ILLINOIS       | 8,974             | 4,812                      | 980                           | 309                                | 1,355                         | 0                         | 39,649              | 56,080    |
| INDIANA        | 5,943             | 1,273                      | 665                           | 891                                | 2,082                         | 0                         | 1,661               | 12,515    |
| IOWA           | 15,496            | 30,372                     | 3,076                         | 72,242                             | 919                           | 0                         | 19,574              | 141,678   |
| KANSAS         | 3,976             | 2,038                      | 1,200                         | 766                                | 74                            | 0                         | 1,075               | 9,128     |
| KENTUCKY       | 35                | 53                         | 56                            | 0                                  | 222                           | 0                         | 3,156               | 3,521     |
| LOUISIANA      | 23,508            | 19,608                     | 2,795                         | 0                                  | 16,585                        | 0                         | 820                 | 63,317    |
| MAINE          | 0                 | 0                          | 0                             | 0                                  | 0                             | 0                         | 12                  | 12        |
| MARYLAND       | 18                | 370                        | 0                             | 5                                  | 0                             | 0                         | 3,409               | 3,802     |
| MASSACHUSETTS  | 0                 | 0                          | 0                             | 0                                  | 0                             | 0                         | 0                   | 0         |
| MICHIGAN       | 803               | 1,785                      | 5,121                         | 33                                 | 11                            | 0                         | 12,798              | 20,551    |
| MINNESOTA      | 268,967           | 20,260                     | 4,260                         | 37,211                             | 223                           | 131                       | 41,339              | 372,391   |
| MISSISSIPPI    | 11,186            | 1,888                      | 0                             | 0                                  | 4,913                         | 0                         | 909                 | 18,896    |
| MISSOURI       | 3,852             | 4,857                      | 165                           | 9                                  | 620                           | 0                         | 4,335               | 13,838    |
| MONTANA        | 4,395             | 0                          | 0                             | 145                                | 0                             | 0                         | 85                  | 4,625     |
| NEBRASKA       | 14,250            | 715                        | 319                           | 3,759                              | 0                             | 0                         | 550                 | 19,593    |
| NEW HAMPSHIRE  | 0                 | 0                          | 0                             | 0                                  | 0                             | 0                         | 0                   | 0         |
| NEW JERSEY     | 1                 | 0                          | 0                             | 0                                  | 0                             | 0                         | 3                   | 4         |
| NEW MEXICO     | 0                 | 0                          | 0                             | 0                                  | 0                             | 0                         | 0                   | 0         |
| NEW YORK       | 51                | 12                         | 31                            | 0                                  | 0                             | 0                         | 367                 | 460       |
| NORTH CAROLINA | 115               | 868                        | 0                             | 0                                  | 2                             | 0                         | 4,357               | 5,341     |
| NORTH DAKOTA   | 767,019           | 487                        | 3,621                         | 16,359                             | 0                             | 2,697                     | 15                  | 790,198   |
| OHIO           | 1,995             | 1,376                      | 874                           | 97                                 | 57                            | 0                         | 2,532               | 6,932     |
| OKLAHOMA       | 1,238             | 0                          | 161                           | 0                                  | 398                           | 0                         | 121                 | 1,918     |
| OREGON         | 197               | 0                          | 0                             | 0                                  | 0                             | 0                         | 208                 | 405       |
| PENNSYLVANIA   | 15                | 554                        | 0                             | 0                                  | 2                             | 0                         | 729                 | 1,300     |
| PUERTO RICO    | 0                 | 0                          | 0                             | 0                                  | 0                             | 0                         | 0                   | 0         |
| SOUTH CAROLINA | 284               | 0                          | 0                             | 0                                  | 0                             | 0                         | 2,039               | 2,323     |
| SOUTH DAKOTA   | 385,717           | 2,899                      | 4,498                         | 35,078                             | 0                             | 1,243                     | 11,253              | 440,688   |
| TENNESSEE      | 834               | 0                          | 0                             | 0                                  | 2,496                         | 0                         | 156                 | 3,486     |
| TEXAS          | 8,759             | 10                         | 280                           | 0                                  | 381                           | 0                         | 163                 | 9,592     |
| UTAH           | 0                 | 0                          | 0                             | 0                                  | 0                             | 0                         | 0                   | 0         |
| VERMONT        | 0                 | 0                          | 0                             | 0                                  | 0                             | 0                         | 3                   | 3         |
| VIRGINIA       | 0                 | 36                         | 0                             | 0                                  | 0                             | 0                         | 283                 | 319       |
| WASHINGTON     | 3,510             | 0                          | 0                             | 0                                  | 0                             | 0                         | 54                  | 3,565     |
| WEST VIRGINIA  | 0                 | 0                          | 0                             | 0                                  | 0                             | 0                         | 0                   | 0         |
| WISCONSIN      | 10,142            | 927                        | 178                           | 43                                 | 0                             | 0                         | 6,093               | 17,383    |
| WYOMING        | 0                 | 0                          | 0                             | 0                                  | 0                             | 0                         | 0                   | 0         |
|                | =====             | =====                      | =====                         | =====                              | =====                         | =====                     | =====               | =====     |
|                | 1,562,990         | 105,560                    | 28,567                        | 166,949                            | 36,245                        | 4,102                     | 160,654             | 2,065,068 |

1/ Includes general, continuous, CREP, and Farmable Wetland enrollment.

2/ CP9, CP30, CP23 under CREP.

**CRP ENROLLMENT AS OF MAY 2007  
BY SIGN-UP AND INITIAL CONTRACT YEAR 1/**

**ACRES**

| SIGN-UP | BEFORE     |           |           |           |         |         |           |         |           |           |            | TOTAL      |
|---------|------------|-----------|-----------|-----------|---------|---------|-----------|---------|-----------|-----------|------------|------------|
|         | 1999       | 1999      | 2000      | 2001      | 2002    | 2003    | 2004      | 2005    | 2006      | 2007+     |            |            |
| <14     | 69,132     | 0         | 0         | 0         | 0       | 0       | 0         | 0       | 0         | 0         | 0          | 69,132     |
| 14      | 554,740    | 0         | 0         | 0         | 0       | 0       | 0         | 0       | 0         | 0         | 0          | 554,740    |
| 15      | 16,052,979 | 354,066   | 0         | 0         | 0       | 0       | 0         | 0       | 0         | 0         | 0          | 16,407,045 |
| 16      | 1,752,436  | 4,042,093 | 0         | 0         | 0       | 0       | 0         | 0       | 0         | 0         | 0          | 5,794,530  |
| 17      | 110,953    | 102,172   | 0         | 0         | 0       | 0       | 0         | 0       | 0         | 0         | 0          | 213,125    |
| 18      | 0          | 0         | 4,694,772 | 0         | 0       | 0       | 0         | 0       | 0         | 0         | 0          | 4,694,772  |
| 19      | 0          | 132,613   | 129,467   | 0         | 0       | 0       | 0         | 0       | 0         | 0         | 0          | 262,080    |
| 20      | 0          | 0         | 0         | 2,215,543 | 0       | 0       | 0         | 0       | 0         | 0         | 0          | 2,215,543  |
| 21      | 0          | 0         | 104,555   | 12,787    | 0       | 0       | 0         | 0       | 0         | 0         | 0          | 117,342    |
| 22      | 0          | 0         | 32,854    | 168,221   | 0       | 0       | 0         | 0       | 0         | 0         | 0          | 201,075    |
| 23      | 0          | 0         | 0         | 216,862   | 242,071 | 0       | 0         | 0       | 0         | 0         | 0          | 458,933    |
| 24      | 0          | 0         | 0         | 0         | 285,686 | 151,036 | 0         | 0       | 0         | 0         | 0          | 436,723    |
| 25      | 0          | 0         | 0         | 0         | 0       | 201,088 | 54,585    | 0       | 0         | 0         | 0          | 255,672    |
| 26      | 0          | 0         | 0         | 0         | 0       | 0       | 1,639,130 | 163,581 | 0         | 0         | 0          | 1,802,711  |
| 27      | 0          | 0         | 0         | 0         | 0       | 11,750  | 172,652   | 0       | 0         | 0         | 0          | 184,401    |
| 28      | 0          | 0         | 0         | 0         | 0       | 0       | 153,571   | 101,506 | 0         | 0         | 0          | 255,077    |
| 29      | 0          | 0         | 0         | 0         | 0       | 0       | 0         | 0       | 1,028,175 | 64,290    | 1,092,466  |            |
| 30      | 0          | 0         | 0         | 0         | 0       | 0       | 0         | 200,749 | 198,718   | 0         | 399,467    |            |
| 31      | 0          | 0         | 0         | 0         | 0       | 0       | 0         | 0       | 202,602   | 146,266   | 348,869    |            |
| 33      | 0          | 0         | 0         | 0         | 0       | 0       | 0         | 0       | 0         | 892,637   | 892,637    |            |
| 35      | 0          | 0         | 0         | 0         | 0       | 0       | 0         | 0       | 0         | 140,992   | 140,992    |            |
| ALL     | 18,540,239 | 4,630,945 | 4,961,649 | 2,613,414 | 527,757 | 363,874 | 2,019,937 | 465,836 | 1,429,496 | 1,244,185 | 36,797,332 |            |

**NUMBER OF CONTRACTS**

| SIGN-UP | BEFORE  |        |        |        |        |        |        |        |        |        |         | TOTAL   |
|---------|---------|--------|--------|--------|--------|--------|--------|--------|--------|--------|---------|---------|
|         | 1999    | 1999   | 2000   | 2001   | 2002   | 2003   | 2004   | 2005   | 2006   | 2007+  |         |         |
| <14     | 2,177   | 0      | 0      | 0      | 0      | 0      | 0      | 0      | 0      | 0      | 0       | 2,177   |
| 14      | 33,631  | 0      | 0      | 0      | 0      | 0      | 0      | 0      | 0      | 0      | 0       | 33,631  |
| 15      | 171,020 | 2,659  | 0      | 0      | 0      | 0      | 0      | 0      | 0      | 0      | 0       | 173,679 |
| 16      | 24,422  | 54,101 | 0      | 0      | 0      | 0      | 0      | 0      | 0      | 0      | 0       | 78,523  |
| 17      | 14,353  | 11,666 | 0      | 0      | 0      | 0      | 0      | 0      | 0      | 0      | 0       | 26,019  |
| 18      | 0       | 0      | 62,136 | 0      | 0      | 0      | 0      | 0      | 0      | 0      | 0       | 62,136  |
| 19      | 0       | 17,002 | 12,772 | 0      | 0      | 0      | 0      | 0      | 0      | 0      | 0       | 29,774  |
| 20      | 0       | 0      | 0      | 38,510 | 0      | 0      | 0      | 0      | 0      | 0      | 0       | 38,510  |
| 21      | 0       | 0      | 12,279 | 815    | 0      | 0      | 0      | 0      | 0      | 0      | 0       | 13,094  |
| 22      | 0       | 0      | 5,550  | 16,467 | 0      | 0      | 0      | 0      | 0      | 0      | 0       | 22,017  |
| 23      | 0       | 0      | 0      | 27,612 | 21,251 | 0      | 0      | 0      | 0      | 0      | 0       | 48,863  |
| 24      | 0       | 0      | 0      | 0      | 32,224 | 11,507 | 0      | 0      | 0      | 0      | 0       | 43,731  |
| 25      | 0       | 0      | 0      | 0      | 0      | 20,727 | 3,612  | 0      | 0      | 0      | 0       | 24,339  |
| 26      | 0       | 0      | 0      | 0      | 0      | 0      | 34,900 | 1,832  | 0      | 0      | 0       | 36,732  |
| 27      | 0       | 0      | 0      | 0      | 0      | 1,688  | 11,413 | 0      | 0      | 0      | 0       | 13,101  |
| 28      | 0       | 0      | 0      | 0      | 0      | 0      | 16,895 | 8,119  | 0      | 0      | 0       | 25,014  |
| 29      | 0       | 0      | 0      | 0      | 0      | 0      | 0      | 0      | 17,962 | 523    | 18,485  |         |
| 30      | 0       | 0      | 0      | 0      | 0      | 0      | 0      | 21,146 | 11,760 | 0      | 32,906  |         |
| 31      | 0       | 0      | 0      | 0      | 0      | 0      | 0      | 0      | 20,079 | 10,258 | 30,337  |         |
| 33      | 0       | 0      | 0      | 0      | 0      | 0      | 0      | 0      | 0      | 16,461 | 16,461  |         |
| 35      | 0       | 0      | 0      | 0      | 0      | 0      | 0      | 0      | 0      | 10,593 | 10,593  |         |
| ALL     | 245,603 | 85,428 | 92,737 | 83,404 | 53,475 | 33,922 | 66,820 | 31,097 | 49,801 | 37,835 | 780,122 |         |

1/ For CRP, contract year is the same as fiscal year, which begins October 1.

General Sign-up Numbers: 1-13, 15, 16, 18, 20, 26, 29, and 33.

Continuous Sign-up Numbers: 14, 17, 19, 21-25, 27, 28, 30, 31, and 35 (sign-up 35 data incomplete).

Sign-up number 32 is reserved for re-enrollment and extension (REX).

Sign-up number 34 is reserved for Emergency Forestry CRP.

**CRP ENROLLMENT BY STATE AS OF MAY 2007**

-----TOTAL CRP (ALL SIGN-UPS)-----

| STATE 1/       | NUMBER OF<br>CONTRACTS | NUMBER OF<br>FARMS | ACRES      | ANNUAL RENTAL PAYMENTS 2/<br>(\$1,000) | (\$/ACRE) |
|----------------|------------------------|--------------------|------------|--|-----------|
| U.S.           | 780,122                | 440,003            | 36,797,332 | 1,819,736                              | 49.45     |
| ALABAMA        | 10,871                 | 7,916              | 494,674    | 22,368                                 | 45.22     |
| ALASKA         | 72                     | 48                 | 29,789     | 1,002                                  | 33.64     |
| ARKANSAS       | 5,341                  | 3,067              | 236,543    | 12,181                                 | 51.50     |
| CALIFORNIA     | 607                    | 465                | 150,017    | 4,908                                  | 32.72     |
| COLORADO       | 14,075                 | 6,677              | 2,476,160  | 79,342                                 | 32.04     |
| CONNECTICUT    | 27                     | 24                 | 332        | 23                                     | 68.78     |
| DELAWARE       | 752                    | 397                | 7,917      | 813                                    | 102.70    |
| FLORIDA        | 1,915                  | 1,566              | 83,167     | 3,136                                  | 37.71     |
| GEORGIA        | 8,633                  | 6,423              | 312,448    | 12,568                                 | 40.22     |
| IDAHO          | 6,252                  | 3,564              | 825,440    | 33,759                                 | 40.90     |
| ILLINOIS       | 77,470                 | 43,643             | 1,086,667  | 112,270                                | 103.32    |
| INDIANA        | 36,150                 | 21,338             | 315,607    | 29,079                                 | 92.14     |
| IOWA           | 107,379                | 54,091             | 1,976,223  | 209,786                                | 106.16    |
| KANSAS         | 51,754                 | 29,530             | 3,259,601  | 127,949                                | 39.25     |
| KENTUCKY       | 16,869                 | 9,584              | 359,183    | 27,262                                 | 75.90     |
| LOUISIANA      | 4,682                  | 3,071              | 311,330    | 16,295                                 | 52.34     |
| MAINE          | 901                    | 599                | 23,655     | 1,176                                  | 49.73     |
| MARYLAND       | 6,654                  | 3,570              | 86,241     | 10,589                                 | 122.78    |
| MASSACHUSETTS  | 14                     | 11                 | 74         | 7                                      | 91.59     |
| MICHIGAN       | 16,677                 | 9,790              | 276,101    | 20,929                                 | 75.80     |
| MINNESOTA      | 62,827                 | 33,546             | 1,835,534  | 110,617                                | 60.26     |
| MISSISSIPPI    | 21,724                 | 14,131             | 955,805    | 40,719                                 | 42.60     |
| MISSOURI       | 38,943                 | 22,855             | 1,593,108  | 106,672                                | 66.96     |
| MONTANA        | 18,451                 | 6,850              | 3,475,640  | 116,849                                | 33.62     |
| NEBRASKA       | 30,334                 | 16,917             | 1,342,223  | 76,519                                 | 57.01     |
| NEW HAMPSHIRE  | 15                     | 14                 | 182        | 9                                      | 52.11     |
| NEW JERSEY     | 188                    | 138                | 2,631      | 155                                    | 58.73     |
| NEW MEXICO     | 2,675                  | 1,673              | 590,828    | 18,584                                 | 31.45     |
| NEW YORK       | 3,147                  | 2,275              | 66,692     | 3,643                                  | 54.62     |
| NORTH CAROLINA | 9,075                  | 5,886              | 137,551    | 8,567                                  | 62.28     |
| NORTH DAKOTA   | 38,162                 | 18,356             | 3,387,024  | 112,597                                | 33.24     |
| OHIO           | 33,546                 | 19,745             | 360,395    | 36,596                                 | 101.54    |
| OKLAHOMA       | 9,696                  | 6,500              | 1,074,055  | 35,250                                 | 32.82     |
| OREGON         | 4,023                  | 2,137              | 569,982    | 28,198                                 | 49.47     |
| PENNSYLVANIA   | 11,298                 | 7,220              | 230,278    | 20,375                                 | 88.48     |
| PUERTO RICO    | 18                     | 18                 | 945        | 80                                     | 84.65     |
| SOUTH CAROLINA | 9,329                  | 5,453              | 211,720    | 7,573                                  | 35.77     |
| SOUTH DAKOTA   | 30,785                 | 14,733             | 1,558,738  | 65,736                                 | 42.17     |
| TENNESSEE      | 9,345                  | 6,323              | 279,952    | 16,612                                 | 59.34     |
| TEXAS          | 26,018                 | 18,625             | 4,075,626  | 143,935                                | 35.32     |
| UTAH           | 1,147                  | 656                | 208,809    | 6,332                                  | 30.32     |
| VERMONT        | 236                    | 181                | 1,981      | 167                                    | 84.08     |
| VIRGINIA       | 5,181                  | 4,026              | 69,292     | 3,738                                  | 53.95     |
| WASHINGTON     | 12,541                 | 5,051              | 1,559,652  | 83,825                                 | 53.75     |
| WEST VIRGINIA  | 305                    | 244                | 4,319      | 295                                    | 68.32     |
| WISCONSIN      | 32,824                 | 20,297             | 608,674    | 42,812                                 | 70.34     |
| WYOMING        | 1,189                  | 776                | 284,325    | 7,832                                  | 27.55     |

1/ State in which land is located.

2/ Approximate payments scheduled to be made October 2007 Includes annual incentive and maintenance allowance payments, but not one-time signing and practice incentive payments or payment reductions, such as for lands enrolled less than a full year and lands hayed or grazed.



**CRP ENROLLMENT BY STATE AS OF MAY 2007**

-----GENERAL SIGN-UP-----

| STATE 1/       | NUMBER OF<br>CONTRACTS | NUMBER OF<br>FARMS | ACRES      | ANNUAL RENTAL PAYMENTS 2/<br>(\$1,000) | (\$/ACRE) |
|----------------|------------------------|--------------------|------------|--|-----------|
| U.S.           | 426,703                | 276,208            | 32,968,835 | 1,444,863                              | 43.83     |
| ALABAMA        | 9,566                  | 7,135              | 458,142    | 20,538                                 | 44.83     |
| ALASKA         | 60                     | 40                 | 29,250     | 966                                    | 33.03     |
| ARKANSAS       | 2,609                  | 1,790              | 157,714    | 6,865                                  | 43.53     |
| CALIFORNIA     | 444                    | 330                | 137,677    | 3,827                                  | 27.80     |
| COLORADO       | 12,903                 | 6,310              | 2,450,172  | 77,095                                 | 31.47     |
| CONNECTICUT    | 16                     | 16                 | 235        | 14                                     | 61.35     |
| DELAWARE       | 76                     | 60                 | 1,661      | 111                                    | 66.62     |
| FLORIDA        | 1,913                  | 1,565              | 83,099     | 3,133                                  | 37.70     |
| GEORGIA        | 8,136                  | 6,117              | 302,109    | 12,071                                 | 39.96     |
| IDAHO          | 5,513                  | 3,126              | 800,399    | 31,204                                 | 38.99     |
| ILLINOIS       | 25,876                 | 18,024             | 666,310    | 53,551                                 | 80.37     |
| INDIANA        | 8,957                  | 6,838              | 212,880    | 16,143                                 | 75.83     |
| IOWA           | 36,709                 | 25,197             | 1,431,447  | 130,979                                | 91.50     |
| KANSAS         | 40,508                 | 24,910             | 3,168,877  | 122,617                                | 38.69     |
| KENTUCKY       | 7,793                  | 5,639              | 285,742    | 19,771                                 | 69.19     |
| LOUISIANA      | 3,106                  | 2,193              | 227,065    | 10,364                                 | 45.64     |
| MAINE          | 760                    | 512                | 23,263     | 1,151                                  | 49.48     |
| MARYLAND       | 560                    | 471                | 10,934     | 731                                    | 66.82     |
| MASSACHUSETTS  | 4                      | 3                  | 46         | 4                                      | 83.65     |
| MICHIGAN       | 6,528                  | 5,176              | 192,093    | 11,139                                 | 57.99     |
| MINNESOTA      | 29,553                 | 19,110             | 1,458,190  | 75,805                                 | 51.99     |
| MISSISSIPPI    | 14,500                 | 10,632             | 781,818    | 30,114                                 | 38.52     |
| MISSOURI       | 27,250                 | 18,251             | 1,465,422  | 95,658                                 | 65.28     |
| MONTANA        | 16,813                 | 6,410              | 3,310,720  | 110,089                                | 33.25     |
| NEBRASKA       | 18,393                 | 11,619             | 1,199,495  | 63,173                                 | 52.67     |
| NEW HAMPSHIRE  | 0                      | 0                  | 0          | 0                                      | .         |
| NEW JERSEY     | 93                     | 68                 | 2,154      | 102                                    | 47.27     |
| NEW MEXICO     | 2,611                  | 1,635              | 585,062    | 18,339                                 | 31.35     |
| NEW YORK       | 1,714                  | 1,296              | 49,775     | 2,028                                  | 40.75     |
| NORTH CAROLINA | 4,439                  | 3,433              | 86,592     | 3,817                                  | 44.08     |
| NORTH DAKOTA   | 29,318                 | 15,009             | 3,211,035  | 105,262                                | 32.78     |
| OHIO           | 7,920                  | 6,164              | 223,618    | 16,408                                 | 73.38     |
| OKLAHOMA       | 9,224                  | 6,243              | 1,059,524  | 34,618                                 | 32.67     |
| OREGON         | 2,545                  | 1,465              | 529,457    | 25,022                                 | 47.26     |
| PENNSYLVANIA   | 1,655                  | 1,380              | 51,881     | 2,093                                  | 40.34     |
| PUERTO RICO    | 16                     | 16                 | 509        | 52                                     | 101.48    |
| SOUTH CAROLINA | 5,295                  | 3,728              | 171,146    | 5,440                                  | 31.78     |
| SOUTH DAKOTA   | 15,160                 | 8,005              | 1,343,934  | 51,749                                 | 38.51     |
| TENNESSEE      | 7,130                  | 5,446              | 256,766    | 14,710                                 | 57.29     |
| TEXAS          | 24,598                 | 17,672             | 4,021,978  | 141,890                                | 35.28     |
| UTAH           | 1,117                  | 635                | 208,521    | 6,318                                  | 30.30     |
| VERMONT        | 5                      | 4                  | 116        | 5                                      | 39.95     |
| VIRGINIA       | 1,888                  | 1,536              | 42,868     | 1,747                                  | 40.75     |
| WASHINGTON     | 8,658                  | 3,962              | 1,447,305  | 74,807                                 | 51.69     |
| WEST VIRGINIA  | 29                     | 24                 | 976        | 40                                     | 41.48     |
| WISCONSIN      | 23,730                 | 16,368             | 542,812    | 35,751                                 | 65.86     |
| WYOMING        | 1,011                  | 644                | 277,896    | 7,549                                  | 27.16     |

1/ State in which land is located.

2/ Payments scheduled to be made October 2007. Includes annual maintenance allowance payments, but not payment reductions, such as for lands enrolled less than a full year and lands hayed or grazed.

**CRP ENROLLMENT BY STATE AS OF MAY 2007**  
**TOTAL CREP AND NON-CREP CONTINUOUS 1/**

| STATE 2/       | NUMBER OF<br>CONTRACTS | NUMBER OF<br>FARMS | ACRES     | ANNUAL RENTAL PAYMENTS 3/<br>(\$1,000) | (\$/ACRE) |
|----------------|------------------------|--------------------|-----------|--|-----------|
| U.S.           | 342,674                | 205,310            | 3,661,547 | 355,129                                | 96.99     |
| ALABAMA        | 1,305                  | 1,001              | 36,532    | 1,830                                  | 50.09     |
| ALASKA         | 12                     | 9                  | 540       | 36                                     | 66.86     |
| ARKANSAS       | 2,732                  | 1,634              | 78,829    | 5,316                                  | 67.44     |
| CALIFORNIA     | 163                    | 142                | 12,340    | 1,081                                  | 87.61     |
| COLORADO       | 1,172                  | 664                | 25,988    | 2,247                                  | 86.45     |
| CONNECTICUT    | 11                     | 8                  | 97        | 8                                      | 86.81     |
| DELAWARE       | 676                    | 364                | 6,255     | 702                                    | 112.28    |
| FLORIDA        | 2                      | 2                  | 68        | 3                                      | 39.88     |
| GEORGIA        | 497                    | 366                | 10,339    | 497                                    | 48.03     |
| IDAHO          | 739                    | 570                | 25,040    | 2,555                                  | 102.04    |
| ILLINOIS       | 51,561                 | 31,215             | 420,047   | 58,671                                 | 139.68    |
| INDIANA        | 27,106                 | 16,364             | 101,835   | 12,821                                 | 125.90    |
| IOWA           | 66,205                 | 36,518             | 472,534   | 66,971                                 | 141.73    |
| KANSAS         | 11,193                 | 7,087              | 89,958    | 5,293                                  | 58.84     |
| KENTUCKY       | 9,076                  | 5,084              | 73,441    | 7,491                                  | 102.00    |
| LOUISIANA      | 1,576                  | 1,094              | 84,265    | 5,931                                  | 70.39     |
| MAINE          | 141                    | 109                | 391       | 25                                     | 64.59     |
| MARYLAND       | 6,093                  | 3,410              | 75,303    | 9,858                                  | 130.91    |
| MASSACHUSETTS  | 10                     | 8                  | 27        | 3                                      | 105.06    |
| MICHIGAN       | 10,144                 | 5,350              | 83,974    | 9,786                                  | 116.54    |
| MINNESOTA      | 30,571                 | 18,867             | 340,133   | 31,062                                 | 91.32     |
| MISSISSIPPI    | 7,224                  | 4,945              | 173,987   | 10,605                                 | 60.95     |
| MISSOURI       | 11,692                 | 7,364              | 127,678   | 11,013                                 | 86.26     |
| MONTANA        | 1,624                  | 675                | 164,775   | 6,755                                  | 41.00     |
| NEBRASKA       | 11,509                 | 7,262              | 138,969   | 13,036                                 | 93.81     |
| NEW HAMPSHIRE  | 15                     | 14                 | 182       | 9                                      | 52.11     |
| NEW JERSEY     | 95                     | 72                 | 476       | 53                                     | 110.59    |
| NEW MEXICO     | 64                     | 41                 | 5,766     | 246                                    | 42.59     |
| NEW YORK       | 1,433                  | 1,031              | 16,917    | 1,614                                  | 95.43     |
| NORTH CAROLINA | 4,636                  | 2,585              | 50,959    | 4,749                                  | 93.20     |
| NORTH DAKOTA   | 8,026                  | 4,756              | 159,630   | 6,530                                  | 40.91     |
| OHIO           | 25,610                 | 15,381             | 136,679   | 20,176                                 | 147.62    |
| OKLAHOMA       | 472                    | 363                | 14,531    | 632                                    | 43.50     |
| OREGON         | 1,478                  | 914                | 40,525    | 3,176                                  | 78.37     |
| PENNSYLVANIA   | 9,643                  | 6,136              | 178,397   | 18,282                                 | 102.48    |
| PUERTO RICO    | 2                      | 2                  | 436       | 28                                     | 65.00     |
| SOUTH CAROLINA | 4,034                  | 2,299              | 40,574    | 2,133                                  | 52.56     |
| SOUTH DAKOTA   | 13,514                 | 8,034              | 179,725   | 11,173                                 | 62.17     |
| TENNESSEE      | 2,215                  | 1,494              | 23,185    | 1,902                                  | 82.05     |
| TEXAS          | 1,420                  | 1,157              | 53,648    | 2,045                                  | 38.12     |
| UTAH           | 30                     | 22                 | 288       | 13                                     | 46.54     |
| VERMONT        | 231                    | 177                | 1,865     | 162                                    | 86.83     |
| VIRGINIA       | 3,293                  | 2,577              | 26,424    | 1,992                                  | 75.38     |
| WASHINGTON     | 3,883                  | 2,044              | 112,348   | 9,018                                  | 80.27     |
| WEST VIRGINIA  | 276                    | 223                | 3,343     | 255                                    | 76.16     |
| WISCONSIN      | 9,088                  | 5,727              | 65,819    | 7,056                                  | 107.20    |
| WYOMING        | 178                    | 147                | 6,429     | 283                                    | 44.06     |

1/ Farmable Wetland enrollment not included.

2/ State in which land is located.

3/ Payments scheduled to be made October 2007. Includes annual incentive and maintenance allowance payments, but not one-time signing and practice incentive payments or payment reductions, such as for lands enrolled less than a full year and lands hayed or grazed.

**CRP ENROLLMENT BY STATE AS OF MAY 2007**

-----CREP ONLY-----

| STATE 1/       | NUMBER OF<br>CONTRACTS | NUMBER OF<br>FARMS | ACRES   | ANNUAL RENTAL PAYMENTS 2/<br>(\$1,000) | (\$/ACRE) |
|----------------|------------------------|--------------------|---------|--|-----------|
| U.S.           | 54,413                 | 36,367             | 956,771 | 116,196                                | 121.45    |
| ALABAMA        | 0                      | 0                  | 0       | 0                                      | .         |
| ALASKA         | 0                      | 0                  | 0       | 0                                      | .         |
| ARKANSAS       | 222                    | 142                | 6,441   | 647                                    | 100.38    |
| CALIFORNIA     | 50                     | 48                 | 4,755   | 578                                    | 121.60    |
| COLORADO       | 103                    | 67                 | 16,946  | 1,881                                  | 111.00    |
| CONNECTICUT    | 0                      | 0                  | 0       | 0                                      | .         |
| DELAWARE       | 475                    | 277                | 5,376   | 633                                    | 117.67    |
| FLORIDA        | 0                      | 0                  | 0       | 0                                      | .         |
| GEORGIA        | 0                      | 0                  | 0       | 0                                      | .         |
| IDAHO          | 102                    | 74                 | 15,123  | 2,013                                  | 133.12    |
| ILLINOIS       | 6,284                  | 4,559              | 124,978 | 19,944                                 | 159.58    |
| INDIANA        | 212                    | 169                | 1,460   | 254                                    | 174.06    |
| IOWA           | 37                     | 32                 | 1,086   | 227                                    | 208.98    |
| KANSAS         | 0                      | 1                  | 0       | 0                                      | .         |
| KENTUCKY       | 691                    | 383                | 13,885  | 1,657                                  | 119.35    |
| LOUISIANA      | 697                    | 518                | 49,109  | 3,879                                  | 78.98     |
| MAINE          | 0                      | 0                  | 0       | 0                                      | .         |
| MARYLAND       | 5,416                  | 3,213              | 71,477  | 9,527                                  | 133.28    |
| MASSACHUSETTS  | 0                      | 0                  | 0       | 0                                      | .         |
| MICHIGAN       | 5,309                  | 2,801              | 60,609  | 7,511                                  | 123.93    |
| MINNESOTA      | 2,750                  | 2,233              | 85,642  | 9,627                                  | 112.41    |
| MISSISSIPPI    | 0                      | 0                  | 0       | 0                                      | .         |
| MISSOURI       | 495                    | 366                | 20,209  | 1,755                                  | 86.82     |
| MONTANA        | 123                    | 45                 | 10,383  | 953                                    | 91.82     |
| NEBRASKA       | 2,513                  | 1,836              | 68,274  | 7,547                                  | 110.54    |
| NEW HAMPSHIRE  | 0                      | 0                  | 0       | 0                                      | .         |
| NEW JERSEY     | 51                     | 38                 | 289     | 38                                     | 131.18    |
| NEW MEXICO     | 0                      | 0                  | 0       | 0                                      | .         |
| NEW YORK       | 657                    | 482                | 8,135   | 1,152                                  | 141.59    |
| NORTH CAROLINA | 2,269                  | 1,472              | 31,335  | 3,416                                  | 109.02    |
| NORTH DAKOTA   | 77                     | 57                 | 1,532   | 55                                     | 35.62     |
| OHIO           | 7,883                  | 5,368              | 77,933  | 13,870                                 | 177.98    |
| OKLAHOMA       | 0                      | 0                  | 0       | 0                                      | .         |
| OREGON         | 1,066                  | 711                | 27,725  | 2,405                                  | 86.73     |
| PENNSYLVANIA   | 9,184                  | 5,811              | 177,264 | 18,223                                 | 102.80    |
| PUERTO RICO    | 0                      | 0                  | 0       | 0                                      | .         |
| SOUTH CAROLINA | 0                      | 0                  | 0       | 0                                      | .         |
| SOUTH DAKOTA   | 0                      | 0                  | 0       | 0                                      | .         |
| TENNESSEE      | 0                      | 0                  | 0       | 0                                      | .         |
| TEXAS          | 0                      | 0                  | 0       | 0                                      | .         |
| UTAH           | 0                      | 0                  | 0       | 0                                      | .         |
| VERMONT        | 185                    | 142                | 1,494   | 142                                    | 94.98     |
| VIRGINIA       | 2,925                  | 2,322              | 23,787  | 1,855                                  | 77.97     |
| WASHINGTON     | 710                    | 561                | 11,158  | 1,857                                  | 166.40    |
| WEST VIRGINIA  | 233                    | 188                | 3,087   | 242                                    | 78.50     |
| WISCONSIN      | 3,694                  | 2,451              | 37,276  | 4,309                                  | 115.61    |
| WYOMING        | 0                      | 0                  | 0       | 0                                      | .         |

1/ State in which land is located.

2/ Payments scheduled to be made October 2007. Includes annual incentive and maintenance allowance payments, but not one-time signing and practice incentive payments or payment reductions, such as for lands enrolled less than a full year and lands hayed or grazed.

**CRP ENROLLMENT BY STATE AS OF MAY 2007**

-----CONTINUOUS NON-CREP 1/-----

| STATE 2/       | NUMBER OF<br>CONTRACTS | NUMBER OF<br>FARMS | ACRES     | ANNUAL RENTAL PAYMENTS 3/<br>(\$1,000) | (\$/ACRE) |
|----------------|------------------------|--------------------|-----------|--|-----------|
| U.S.           | 288,261                | 174,677            | 2,704,776 | 238,933                                | 88.34     |
| ALABAMA        | 1,305                  | 1,001              | 36,532    | 1,830                                  | 50.09     |
| ALASKA         | 12                     | 9                  | 540       | 36                                     | 66.86     |
| ARKANSAS       | 2,510                  | 1,512              | 72,388    | 4,670                                  | 64.51     |
| CALIFORNIA     | 113                    | 95                 | 7,585     | 503                                    | 66.30     |
| COLORADO       | 1,069                  | 602                | 9,042     | 366                                    | 40.43     |
| CONNECTICUT    | 11                     | 8                  | 97        | 8                                      | 86.81     |
| DELAWARE       | 201                    | 154                | 879       | 70                                     | 79.29     |
| FLORIDA        | 2                      | 2                  | 68        | 3                                      | 39.88     |
| GEORGIA        | 497                    | 366                | 10,339    | 497                                    | 48.03     |
| IDAHO          | 637                    | 498                | 9,918     | 542                                    | 54.66     |
| ILLINOIS       | 45,277                 | 28,051             | 295,069   | 38,727                                 | 131.25    |
| INDIANA        | 26,894                 | 16,250             | 100,375   | 12,567                                 | 125.20    |
| IOWA           | 66,168                 | 36,506             | 471,448   | 66,744                                 | 141.57    |
| KANSAS         | 11,193                 | 7,086              | 89,958    | 5,293                                  | 58.84     |
| KENTUCKY       | 8,385                  | 4,703              | 59,556    | 5,834                                  | 97.95     |
| LOUISIANA      | 879                    | 598                | 35,156    | 2,052                                  | 58.38     |
| MAINE          | 141                    | 109                | 391       | 25                                     | 64.59     |
| MARYLAND       | 677                    | 497                | 3,825     | 331                                    | 86.61     |
| MASSACHUSETTS  | 10                     | 8                  | 27        | 3                                      | 105.06    |
| MICHIGAN       | 4,835                  | 2,950              | 23,365    | 2,275                                  | 97.36     |
| MINNESOTA      | 27,821                 | 17,238             | 254,491   | 21,435                                 | 84.23     |
| MISSISSIPPI    | 7,224                  | 4,945              | 173,987   | 10,605                                 | 60.95     |
| MISSOURI       | 11,197                 | 7,059              | 107,468   | 9,259                                  | 86.15     |
| MONTANA        | 1,501                  | 630                | 154,392   | 5,802                                  | 37.58     |
| NEBRASKA       | 8,996                  | 5,867              | 70,695    | 5,489                                  | 77.65     |
| NEW HAMPSHIRE  | 15                     | 14                 | 182       | 9                                      | 52.11     |
| NEW JERSEY     | 44                     | 34                 | 187       | 15                                     | 78.74     |
| NEW MEXICO     | 64                     | 41                 | 5,766     | 246                                    | 42.59     |
| NEW YORK       | 776                    | 583                | 8,782     | 462                                    | 52.66     |
| NORTH CAROLINA | 2,367                  | 1,278              | 19,624    | 1,333                                  | 67.93     |
| NORTH DAKOTA   | 7,949                  | 4,705              | 158,098   | 6,475                                  | 40.96     |
| OHIO           | 17,727                 | 11,477             | 58,746    | 6,306                                  | 107.34    |
| OKLAHOMA       | 472                    | 363                | 14,531    | 632                                    | 43.50     |
| OREGON         | 412                    | 266                | 12,800    | 771                                    | 60.27     |
| PENNSYLVANIA   | 459                    | 378                | 1,132     | 59                                     | 52.01     |
| PUERTO RICO    | 2                      | 2                  | 436       | 28                                     | 65.00     |
| SOUTH CAROLINA | 4,034                  | 2,299              | 40,574    | 2,133                                  | 52.56     |
| SOUTH DAKOTA   | 13,514                 | 8,034              | 179,725   | 11,173                                 | 62.17     |
| TENNESSEE      | 2,215                  | 1,494              | 23,185    | 1,902                                  | 82.05     |
| TEXAS          | 1,420                  | 1,157              | 53,648    | 2,045                                  | 38.12     |
| UTAH           | 30                     | 22                 | 288       | 13                                     | 46.54     |
| VERMONT        | 46                     | 45                 | 370       | 20                                     | 53.97     |
| VIRGINIA       | 368                    | 301                | 2,637     | 137                                    | 51.97     |
| WASHINGTON     | 3,173                  | 1,529              | 101,189   | 7,162                                  | 70.77     |
| WEST VIRGINIA  | 43                     | 36                 | 256       | 12                                     | 47.85     |
| WISCONSIN      | 5,394                  | 3,726              | 28,543    | 2,746                                  | 96.22     |
| WYOMING        | 178                    | 147                | 6,429     | 283                                    | 44.06     |

1/ Farmable Wetland enrollment not included.

2/ State in which land is located.

3/ Payments scheduled to be made October 2007. Includes annual incentive and maintenance allowance payments, but not one-time signing and practice incentive payments or payment reductions, such as for lands enrolled less than a full year and lands hayed or grazed.

**CRP ENROLLMENT BY STATE AS OF MAY 2007**

-----FARMABLE WETLAND PROGRAM-----

| STATE 1/       | NUMBER OF<br>CONTRACTS | NUMBER OF<br>FARMS | ACRES   | ANNUAL RENTAL PAYMENTS 2/<br>(\$1,000) | (\$/ACRE) |
|----------------|------------------------|--------------------|---------|--|-----------|
| U.S.           | 10,745                 | 8,582              | 166,949 | 19,743                                 | 118.26    |
| ALABAMA        | 0                      | 0                  | 0       | 0                                      | .         |
| ALASKA         | 0                      | 0                  | 0       | 0                                      | .         |
| ARKANSAS       | 0                      | 0                  | 0       | 0                                      | .         |
| CALIFORNIA     | 0                      | 0                  | 0       | 0                                      | .         |
| COLORADO       | 0                      | 0                  | 0       | 0                                      | .         |
| CONNECTICUT    | 0                      | 0                  | 0       | 0                                      | .         |
| DELAWARE       | 0                      | 0                  | 0       | 0                                      | .         |
| FLORIDA        | 0                      | 0                  | 0       | 0                                      | .         |
| GEORGIA        | 0                      | 0                  | 0       | 0                                      | .         |
| IDAHO          | 0                      | 0                  | 0       | 0                                      | .         |
| ILLINOIS       | 33                     | 32                 | 309     | 48                                     | 154.53    |
| INDIANA        | 87                     | 76                 | 891     | 116                                    | 130.12    |
| IOWA           | 4,465                  | 3,566              | 72,242  | 11,836                                 | 163.84    |
| KANSAS         | 53                     | 49                 | 766     | 39                                     | 50.51     |
| KENTUCKY       | 0                      | 0                  | 0       | 0                                      | .         |
| LOUISIANA      | 0                      | 0                  | 0       | 0                                      | .         |
| MAINE          | 0                      | 0                  | 0       | 0                                      | .         |
| MARYLAND       | 1                      | 1                  | 5       | 0                                      | 97.00     |
| MASSACHUSETTS  | 0                      | 0                  | 0       | 0                                      | .         |
| MICHIGAN       | 5                      | 5                  | 33      | 3                                      | 91.53     |
| MINNESOTA      | 2,703                  | 2,308              | 37,211  | 3,750                                  | 100.77    |
| MISSISSIPPI    | 0                      | 0                  | 0       | 0                                      | .         |
| MISSOURI       | 1                      | 1                  | 9       | 1                                      | 76.04     |
| MONTANA        | 14                     | 6                  | 145     | 5                                      | 34.96     |
| NEBRASKA       | 432                    | 379                | 3,759   | 310                                    | 82.45     |
| NEW HAMPSHIRE  | 0                      | 0                  | 0       | 0                                      | .         |
| NEW JERSEY     | 0                      | 0                  | 0       | 0                                      | .         |
| NEW MEXICO     | 0                      | 0                  | 0       | 0                                      | .         |
| NEW YORK       | 0                      | 0                  | 0       | 0                                      | .         |
| NORTH CAROLINA | 0                      | 0                  | 0       | 0                                      | .         |
| NORTH DAKOTA   | 818                    | 573                | 16,359  | 805                                    | 49.22     |
| OHIO           | 16                     | 17                 | 97      | 12                                     | 119.02    |
| OKLAHOMA       | 0                      | 0                  | 0       | 0                                      | .         |
| OREGON         | 0                      | 0                  | 0       | 0                                      | .         |
| PENNSYLVANIA   | 0                      | 0                  | 0       | 0                                      | .         |
| PUERTO RICO    | 0                      | 0                  | 0       | 0                                      | .         |
| SOUTH CAROLINA | 0                      | 0                  | 0       | 0                                      | .         |
| SOUTH DAKOTA   | 2,111                  | 1,563              | 35,078  | 2,814                                  | 80.22     |
| TENNESSEE      | 0                      | 0                  | 0       | 0                                      | .         |
| TEXAS          | 0                      | 0                  | 0       | 0                                      | .         |
| UTAH           | 0                      | 0                  | 0       | 0                                      | .         |
| VERMONT        | 0                      | 0                  | 0       | 0                                      | .         |
| VIRGINIA       | 0                      | 0                  | 0       | 0                                      | .         |
| WASHINGTON     | 0                      | 0                  | 0       | 0                                      | .         |
| WEST VIRGINIA  | 0                      | 0                  | 0       | 0                                      | .         |
| WISCONSIN      | 6                      | 6                  | 43      | 5                                      | 121.84    |
| WYOMING        | 0                      | 0                  | 0       | 0                                      | .         |

1/ State in which land is located.

2/ Payments scheduled to be made October 2007. Includes annual incentive and maintenance allowance payments, but not one-time signing and practice incentive payments or payment reductions, such as for lands enrolled less than a full year and lands hayed or grazed.

**CONTINUOUS/CREP ENROLLMENT CHANGE FROM PREVIOUS MONTH**  
**-----CHANGE FROM APRIL 2007 TO MAY 2007 1/-----**

| STATE 2/       | -----NON-CREP-----     |        | -----CREP-----         |       | -----TOTAL-----        |        |
|----------------|------------------------|--------|------------------------|-------|------------------------|--------|
|                | NUMBER OF<br>CONTRACTS | ACRES  | NUMBER OF<br>CONTRACTS | ACRES | NUMBER OF<br>CONTRACTS | ACRES  |
| U.S.           | 1,931                  | 17,879 | 511                    | 5,771 | 2,442                  | 23,651 |
| ALABAMA        | 4                      | 119    | 0                      | 0     | 4                      | 119    |
| ALASKA         | 0                      | 0      | 0                      | 0     | 0                      | 0      |
| ARKANSAS       | 9                      | 717    | 0                      | 0     | 9                      | 717    |
| CALIFORNIA     | 2                      | 0      | 1                      | 34    | 3                      | 34     |
| COLORADO       | 2                      | 7      | 1                      | -9    | 3                      | -1     |
| CONNECTICUT    | 0                      | 0      | 0                      | 0     | 0                      | 0      |
| DELAWARE       | -1                     | -1     | 9                      | 78    | 8                      | 77     |
| FLORIDA        | 0                      | 0      | 0                      | 0     | 0                      | 0      |
| GEORGIA        | 104                    | 4,231  | 0                      | 0     | 104                    | 4,231  |
| IDAHO          | 0                      | 7      | 8                      | 688   | 8                      | 695    |
| ILLINOIS       | 280                    | 1,795  | 31                     | 300   | 311                    | 2,095  |
| INDIANA        | 148                    | 243    | 9                      | 28    | 157                    | 271    |
| IOWA           | 238                    | 441    | 1                      | 89    | 239                    | 530    |
| KANSAS         | 142                    | 1,075  | 0                      | 0     | 142                    | 1,075  |
| KENTUCKY       | 48                     | 346    | 10                     | 203   | 58                     | 549    |
| LOUISIANA      | 0                      | 16     | 1                      | 55    | 1                      | 71     |
| MAINE          | 0                      | 0      | 0                      | 0     | 0                      | 0      |
| MARYLAND       | 1                      | -2     | 4                      | 59    | 5                      | 56     |
| MASSACHUSETTS  | 0                      | 0      | 0                      | 0     | 0                      | 0      |
| MICHIGAN       | 12                     | -2     | 12                     | 129   | 24                     | 127    |
| MINNESOTA      | 117                    | 653    | 8                      | 143   | 125                    | 796    |
| MISSISSIPPI    | 14                     | 329    | 0                      | 0     | 14                     | 329    |
| MISSOURI       | 100                    | 903    | 52                     | 1,240 | 152                    | 2,143  |
| MONTANA        | 4                      | 19     | -2                     | -49   | 2                      | -30    |
| NEBRASKA       | 61                     | 358    | 9                      | -134  | 70                     | 224    |
| NEW HAMPSHIRE  | 0                      | 0      | 0                      | 0     | 0                      | 0      |
| NEW JERSEY     | 0                      | 0      | 3                      | 2     | 3                      | 2      |
| NEW MEXICO     | 0                      | -16    | 0                      | 0     | 0                      | -16    |
| NEW YORK       | 4                      | 76     | 14                     | 228   | 18                     | 304    |
| NORTH CAROLINA | 8                      | 102    | 6                      | 46    | 14                     | 148    |
| NORTH DAKOTA   | 138                    | 2,801  | 0                      | 0     | 138                    | 2,801  |
| OHIO           | 254                    | 789    | 199                    | 1,325 | 453                    | 2,115  |
| OKLAHOMA       | 0                      | 0      | 0                      | 0     | 0                      | 0      |
| OREGON         | 0                      | -1     | 12                     | 257   | 12                     | 257    |
| PENNSYLVANIA   | 4                      | 2      | 76                     | 858   | 80                     | 860    |
| PUERTO RICO    | 0                      | 0      | 0                      | 0     | 0                      | 0      |
| SOUTH CAROLINA | -2                     | -66    | 0                      | 0     | -2                     | -66    |
| SOUTH DAKOTA   | 179                    | 1,573  | 0                      | 0     | 179                    | 1,573  |
| TENNESSEE      | 9                      | 90     | 0                      | 0     | 9                      | 90     |
| TEXAS          | 16                     | 279    | 0                      | 0     | 16                     | 279    |
| UTAH           | 0                      | 0      | 0                      | 0     | 0                      | 0      |
| VERMONT        | 0                      | 0      | 2                      | 5     | 2                      | 5      |
| VIRGINIA       | 7                      | 247    | 22                     | 95    | 29                     | 342    |
| WASHINGTON     | 19                     | 336    | 2                      | 5     | 21                     | 342    |
| WEST VIRGINIA  | 0                      | 0      | 2                      | 22    | 2                      | 22     |
| WISCONSIN      | 8                      | 11     | 19                     | 72    | 27                     | 83     |
| WYOMING        | 2                      | 399    | 0                      | 0     | 2                      | 399    |

1/ Includes Farmable Wetland enrollment.  
2/ State in which land is located.

Note: Negative numbers, indicating net reductions in contracts or acres, reflect contract terminations, data errors, and/or data corrections.

**CONTINUOUS/CREP ENROLLMENT ACTIVITY SINCE INCEPTION (ACRES)  
BY STATE AND SIGN-UP, AS OF MAY 2007 1/**

| SIGN-UP NUMBER | 14-23 3/  | 24      | 25/27 4/ | 28      | 30      | 31 5/   | 35 5/   | TOTAL     |
|----------------|-----------|---------|----------|---------|---------|---------|---------|-----------|
| SIGN-UP FY     | 1997-2001 | 2002    | 2003     | 2004    | 2005    | 2006    | 2007    |           |
| STATE 2/       |           |         |          |         |         |         |         |           |
| U. S.          | 1,781,447 | 392,064 | 413,085  | 234,506 | 380,434 | 326,200 | 133,813 | 3,661,547 |
| ALABAMA        | 12,532    | 4,722   | 7,154    | 4,375   | 3,842   | 2,852   | 1,054   | 36,532    |
| ALASKA         | 147       | 0       | 63       | 293     | 3       | 31      | 3       | 540       |
| ARKANSAS       | 11,167    | 8,053   | 19,584   | 10,966  | 14,421  | 12,131  | 2,506   | 78,829    |
| CALIFORNIA     | 3,518     | 1,122   | 3,209    | 1,631   | 1,659   | 686     | 514     | 12,340    |
| COLORADO       | 3,872     | 2,057   | 958      | 839     | 539     | 8,129   | 9,594   | 25,988    |
| CONNECTICUT    | 83        | 14      | 0        | 0       | 0       | 0       | 0       | 97        |
| DELAWARE       | 3,175     | 1,737   | 354      | 255     | 277     | 186     | 271     | 6,255     |
| FLORIDA        | 68        | 0       | 0        | 0       | 0       | 0       | 0       | 68        |
| GEORGIA        | 1,215     | 298     | 326      | 157     | 907     | 838     | 6,598   | 10,339    |
| IDAHO          | 4,866     | 2,016   | 1,757    | 346     | 282     | 525     | 15,247  | 25,040    |
| ILLINOIS       | 274,103   | 39,428  | 26,151   | 15,718  | 31,361  | 25,899  | 7,388   | 420,047   |
| INDIANA        | 51,328    | 11,473  | 9,395    | 6,021   | 11,898  | 9,699   | 2,022   | 101,835   |
| IOWA           | 291,241   | 41,510  | 39,464   | 30,313  | 29,309  | 33,343  | 7,353   | 472,534   |
| KANSAS         | 32,033    | 7,293   | 6,152    | 4,297   | 17,450  | 18,013  | 4,719   | 89,958    |
| KENTUCKY       | 31,537    | 9,981   | 7,247    | 5,916   | 7,923   | 6,643   | 4,194   | 73,441    |
| LOUISIANA      | 3,130     | 1,754   | 9,534    | 6,384   | 33,968  | 26,680  | 2,815   | 84,265    |
| MAINE          | 311       | 38      | 8        | 3       | 6       | 25      | 0       | 391       |
| MARYLAND       | 33,945    | 16,974  | 16,749   | 3,032   | 1,789   | 1,668   | 1,146   | 75,303    |
| MASSACHUSETTS  | 27        | 0       | 0        | 0       | 0       | 0       | 0       | 27        |
| MICHIGAN       | 33,403    | 25,635  | 6,712    | 1,676   | 9,825   | 5,408   | 1,315   | 83,974    |
| MINNESOTA      | 187,708   | 62,026  | 44,729   | 13,733  | 12,484  | 12,949  | 6,505   | 340,133   |
| MISSISSIPPI    | 50,120    | 20,700  | 51,444   | 16,791  | 15,701  | 12,594  | 6,636   | 173,987   |
| MISSOURI       | 51,874    | 16,386  | 13,569   | 5,927   | 11,959  | 18,292  | 9,672   | 127,678   |
| MONTANA        | 148,561   | 1,187   | 8,759    | 2,341   | 3,047   | 744     | 136     | 164,775   |
| NEBRASKA       | 30,392    | 10,518  | 29,192   | 7,300   | 37,071  | 20,880  | 3,615   | 138,969   |
| NEW HAMPSHIRE  | 181       | 0       | 0        | 1       | 0       | 0       | 0       | 182       |
| NEW JERSEY     | 161       | 10      | 15       | 0       | 17      | 199     | 76      | 476       |
| NEW MEXICO     | 851       | 1,728   | 1,149    | 904     | 1,061   | 73      | 0       | 5,766     |
| NEW YORK       | 6,770     | 1,626   | 1,123    | 2,485   | 2,191   | 2,003   | 719     | 16,917    |
| NORTH CAROLINA | 25,797    | 3,087   | 6,093    | 4,022   | 6,446   | 4,518   | 998     | 50,959    |
| NORTH DAKOTA   | 114,783   | 10,739  | 7,227    | 7,290   | 5,869   | 8,103   | 5,620   | 159,630   |
| OHIO           | 38,558    | 9,402   | 9,706    | 5,733   | 26,812  | 36,887  | 9,580   | 136,679   |
| OKLAHOMA       | 11,527    | 437     | 429      | 334     | 874     | 249     | 681     | 14,531    |
| OREGON         | 8,916     | 2,882   | 8,773    | 5,738   | 6,998   | 5,467   | 1,751   | 40,525    |
| PENNSYLVANIA   | 30,041    | 23,264  | 22,091   | 37,035  | 40,951  | 17,667  | 7,347   | 178,397   |
| PUERTO RICO    | 0         | 0       | 0        | 436     | 0       | 0       | 0       | 436       |
| SOUTH CAROLINA | 30,384    | 1,222   | 866      | 801     | 5,032   | 1,649   | 621     | 40,574    |
| SOUTH DAKOTA   | 116,868   | 9,047   | 10,870   | 10,418  | 12,632  | 12,544  | 7,348   | 179,725   |
| TENNESSEE      | 5,767     | 3,797   | 3,813    | 2,065   | 4,137   | 2,796   | 810     | 23,185    |
| TEXAS          | 14,096    | 9,596   | 8,689    | 4,841   | 9,428   | 4,800   | 2,196   | 53,648    |
| UTAH           | 44        | 22      | 138      | 36      | 41      | 8       | 0       | 288       |
| VERMONT        | 528       | 520     | 160      | 223     | 122     | 244     | 67      | 1,865     |
| VIRGINIA       | 12,483    | 2,607   | 4,487    | 2,284   | 2,076   | 1,845   | 641     | 26,424    |
| WASHINGTON     | 78,097    | 7,646   | 11,570   | 4,525   | 5,323   | 4,783   | 403     | 112,348   |
| WEST VIRGINIA  | 166       | 566     | 587      | 427     | 371     | 817     | 409     | 3,343     |
| WISCONSIN      | 23,568    | 18,137  | 11,648   | 5,191   | 3,775   | 2,479   | 1,021   | 65,819    |
| WYOMING        | 1,484     | 800     | 1,136    | 1,377   | 557     | 854     | 222     | 6,429     |

- 1/ Farmable Wetland enrollment not included.
- 2/ State in which land is located.
- 3/ Sign-up 21 ended and sign-up 22 began in May 2000.
- 4/ Sign-up 25 ended and sign-up 27 began in May 2003.
- 5/ Sign-up 35 data incomplete.

**RESULTS OF CONTRACT RE-ENROLLMENT AND EXTENSION OFFER (REX)  
ON FY 2007-EXPIRING CONTRACTS (ACRES)  
PRELIMINARY AND SUBJECT TO CHANGE \***

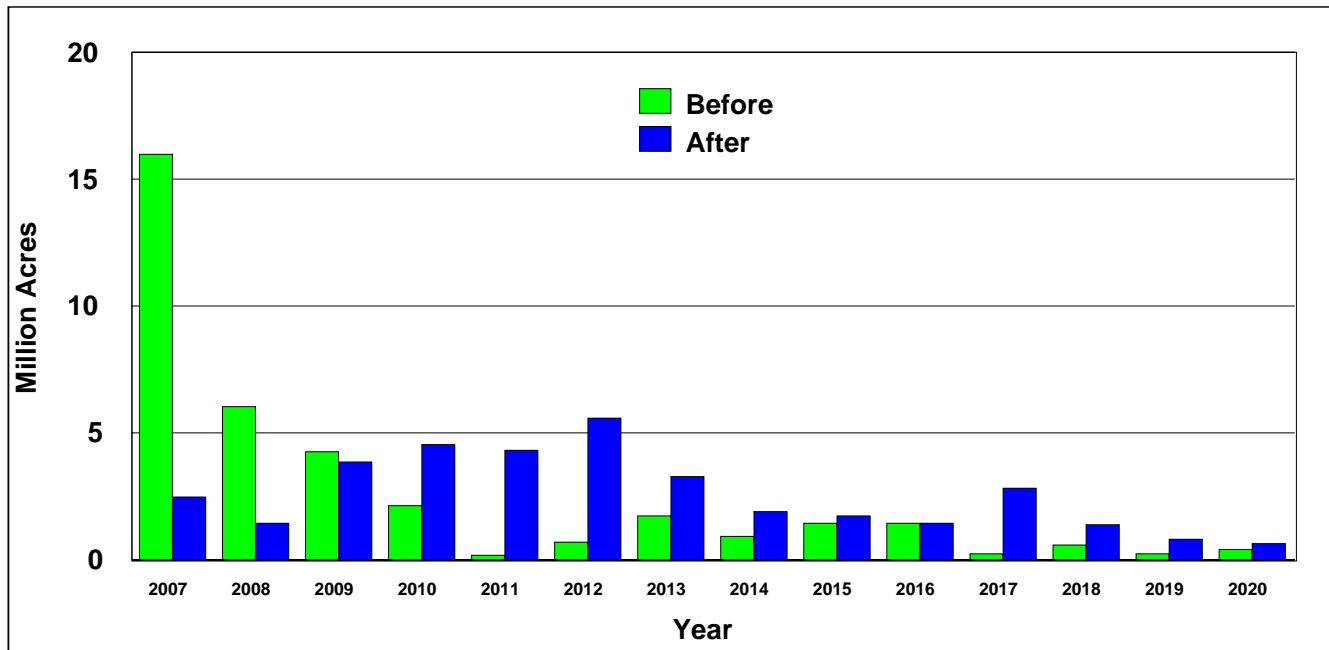
| STATE          | ELIGIBLE FOR<br>REX 1/ | ACCEPTED FOR REX |            |            |         | DECLINING<br>'REX' |
|----------------|------------------------|------------------|------------|------------|---------|--------------------|
|                |                        | RE-ENROLLED      | EXTENDED   | TOTAL      | PERCENT |                    |
| ALABAMA        | 230,396                | 29,188           | 151,215    | 180,403    | 78      | 49,994             |
| ALASKA         | 24,034                 | 14,864           | 5,028      | 19,892     | 83      | 4,141              |
| ARKANSAS       | 46,378                 | 5,024            | 28,854     | 33,879     | 73      | 12,499             |
| CALIFORNIA     | 93,779                 | 42,027           | 32,429     | 74,457     | 79      | 19,323             |
| COLORADO       | 1,350,741              | 28,216           | 1,283,157  | 1,311,373  | 97      | 39,367             |
| CONNECTICUT    | 167                    | 16               | 17         | 34         | 20      | 133                |
| DELAWARE       | 399                    | 108              | 95         | 203        | 51      | 196                |
| FLORIDA        | 42,769                 | 6,543            | 23,124     | 29,667     | 69      | 13,102             |
| GEORGIA        | 96,214                 | 8,595            | 66,566     | 75,161     | 78      | 21,053             |
| IDAHO          | 528,598                | 75,584           | 398,591    | 474,174    | 90      | 54,423             |
| ILLINOIS       | 167,422                | 69,409           | 65,674     | 135,083    | 81      | 32,339             |
| INDIANA        | 67,492                 | 28,806           | 18,627     | 47,433     | 70      | 20,059             |
| IOWA           | 497,091                | 216,547          | 155,573    | 372,119    | 75      | 124,972            |
| KANSAS         | 1,610,000              | 136,832          | 1,341,168  | 1,478,001  | 92      | 131,999            |
| KENTUCKY       | 132,719                | 15,154           | 75,906     | 91,060     | 69      | 41,659             |
| LOUISIANA      | 41,083                 | 7,429            | 30,214     | 37,643     | 92      | 3,440              |
| MAINE          | 15,155                 | 2,472            | 9,719      | 12,191     | 80      | 2,964              |
| MARYLAND       | 4,217                  | 2,167            | 409        | 2,576      | 61      | 1,641              |
| MASSACHUSETTS  | 15                     | 0                | 0          | 0          | 0       | 15                 |
| MICHIGAN       | 45,248                 | 11,407           | 16,028     | 27,435     | 61      | 17,813             |
| MINNESOTA      | 381,729                | 60,708           | 256,772    | 317,481    | 83      | 64,248             |
| MISSISSIPPI    | 417,689                | 94,741           | 232,466    | 327,207    | 78      | 90,482             |
| MISSOURI       | 781,389                | 135,264          | 501,696    | 636,960    | 82      | 144,429            |
| MONTANA        | 1,545,823              | 356,840          | 1,064,847  | 1,421,687  | 92      | 124,136            |
| NEBRASKA       | 558,043                | 71,028           | 397,647    | 468,674    | 84      | 89,369             |
| NEW JERSEY     | 992                    | 387              | 162        | 549        | 55      | 443                |
| NEW MEXICO     | 533,768                | 122,508          | 378,028    | 500,536    | 94      | 33,232             |
| NEW YORK       | 24,645                 | 11,930           | 4,879      | 16,810     | 68      | 7,836              |
| NORTH CAROLINA | 40,162                 | 3,504            | 26,068     | 29,572     | 74      | 10,590             |
| NORTH DAKOTA   | 1,652,787              | 578,076          | 807,192    | 1,385,268  | 84      | 267,519            |
| OHIO           | 75,769                 | 35,693           | 18,529     | 54,223     | 72      | 21,547             |
| OKLAHOMA       | 620,777                | 73,333           | 460,303    | 533,637    | 86      | 87,140             |
| OREGON         | 295,609                | 75,317           | 206,515    | 281,833    | 95      | 13,776             |
| PENNSYLVANIA   | 30,810                 | 5,868            | 1,079      | 6,947      | 23      | 23,863             |
| PUERTO RICO    | 157                    | 0                | 0          | 0          | 0       | 157                |
| SOUTH CAROLINA | 94,532                 | 15,183           | 61,878     | 77,060     | 82      | 17,472             |
| SOUTH DAKOTA   | 683,628                | 55,495           | 376,798    | 432,294    | 63      | 251,335            |
| TENNESSEE      | 122,600                | 11,760           | 67,670     | 79,430     | 65      | 43,170             |
| TEXAS          | 2,055,713              | 126,124          | 1,778,760  | 1,904,885  | 93      | 150,829            |
| UTAH           | 143,549                | 3,334            | 130,661    | 133,995    | 93      | 9,554              |
| VERMONT        | 116                    | 45               | 49         | 94         | 81      | 22                 |
| VIRGINIA       | 22,613                 | 6,777            | 9,356      | 16,133     | 71      | 6,480              |
| WASHINGTON     | 220,680                | 4,809            | 186,363    | 191,172    | 87      | 29,508             |
| WEST VIRGINIA  | 497                    | 185              | 187        | 372        | 75      | 125                |
| WISCONSIN      | 190,222                | 36,891           | 78,024     | 114,915    | 60      | 75,306             |
| WYOMING        | 197,320                | 0                | 184,748    | 184,748    | 94      | 12,572             |
|                | =====                  | =====            | =====      | =====      | ==      | =====              |
|                | 15,685,540             | 2,586,192        | 10,933,073 | 13,519,265 | 86      | 2,166,275          |

\* Preliminary estimates based on contracts approved and recorded in CRP contract files, as of May, 2007.

1/ Not including expiring continuous sign-up acreage. Acres under expiring continuous sign-up (340,000 acres in 2007) are eligible to be re-enrolled and were not offered early re-enrollments under REX.



**SCHEDULE OF CRP CONTRACT EXPIRATIONS  
BEFORE AND AFTER RE-ENROLLMENT AND EXTENSION (REX) OFFER  
PRELIMINARY AND SUBJECT TO CHANGE \***



Note: Contracts expire at the end of the fiscal year (September 30<sup>th</sup>).

**Expiring Acres Before and After REX  
Preliminary and Subject to Change \*  
(Million Acres)**

| Expiration Date | Before REX  | Decline REX | Expiring REX Extensions |            |            |            | Expiring REX Re-enrolls | After REX   | Expiring Continuous | Total Expiring |
|-----------------|-------------|-------------|-------------------------|------------|------------|------------|-------------------------|-------------|---------------------|----------------|
|                 |             |             | 2-yr                    | 3-yr       | 4-yr       | 5-yr       |                         |             |                     |                |
| 9/30/2007       | 16.0        | 2.2         |                         |            |            |            |                         | 2.2         | 0.3                 | 2.5            |
| 9/30/2008       | 6.1         | 1.3         |                         |            |            |            |                         | 1.3         | 0.2                 | 1.5            |
| 9/30/2009       | 4.3         | 0.9         | 2.9                     |            |            |            |                         | 3.8         | 0.1                 | 3.9            |
| 9/30/2010       | 2.2         | 0.6         | 0.9                     | 2.8        |            |            |                         | 4.4         | 0.1                 | 4.5            |
| 9/30/2011       | 0.2         |             | 0.7                     | 0.9        | 2.6        |            |                         | 4.1         | 0.2                 | 4.3            |
| 9/30/2012       | 0.7         |             | 0.3                     | 0.6        | 1.2        | 2.7        |                         | 4.9         | 0.3                 | 5.6            |
| 9/30/2013       | 1.7         |             |                         | 0.3        | 0.6        | 0.7        |                         | 1.6         | 0.2                 | 3.3            |
| 9/30/2014       | 0.9         |             |                         |            | 0.3        | 0.7        |                         | 1.0         | 0.2                 | 1.9            |
| 9/30/2015       | 1.5         |             |                         |            |            | 0.3        |                         | 0.3         | 0.4                 | 1.7            |
| 9/30/2016       | 1.5         |             |                         |            |            |            |                         | 0.0         | 0.5                 | 1.5            |
| 9/30/2017       | 0.3         |             |                         |            |            |            | 2.6                     | 2.6         | 0.3                 | 2.9            |
| 9/30/2018       | 0.6         |             |                         |            |            |            | 0.8                     | 0.8         | 0.3                 | 1.4            |
| 9/30/2019       | 0.2         |             |                         |            |            |            | 0.6                     | 0.6         | 0.2                 | 0.8            |
| 9/30/2020       | 0.4         |             |                         |            |            |            | 0.3                     | 0.3         | 0.3                 | 0.7            |
| <b>Total</b>    | <b>36.5</b> | <b>5.0</b>  | <b>4.8</b>              | <b>4.6</b> | <b>4.7</b> | <b>4.5</b> | <b>4.3</b>              | <b>27.8</b> | <b>3.6</b>          | <b>36.5</b>    |

\* Preliminary estimates based on acres approved and recorded in CRP contract files (2007-expiring contracts as of May 2007) and preliminary indications of interest by holders of 2008-2010 expiring contracts.

**CONSERVATION PRACTICES INSTALLED ON CRP (ACRES)  
CUMULATIVE, AS OF MAY 2007**

| STATE          | NEW GRASS PLANTINGS |                 | NEW TREE PLANTINGS |                            |                     | WILDLIFE<br>HABITAT<br>(CP4D) 1/ | WILDLIFE<br>CORRIDORS<br>(CP4B) | FIELD<br>WINDBREAKS<br>(CP5) |
|----------------|---------------------|-----------------|--------------------|----------------------------|---------------------|----------------------------------|---------------------------------|------------------------------|
|                | INTROD.<br>(CP1)    | NATIVE<br>(CP2) | SOFTWOODS<br>(CP3) | LONGLEAF<br>PINE<br>(CP3A) | HARDWOODS<br>(CP3A) |                                  |                                 |                              |
| ALABAMA        | 4,243               | 3,706           | 82,861             | 46,618                     | 16,095              | 10,459                           | 534                             | 0                            |
| ALASKA         | 5,746               | 18              | 0                  | 0                          | 0                   | 11                               | 0                               | 0                            |
| ARKANSAS       | 3,178               | 4,342           | 8,306              | 0                          | 36,128              | 2,457                            | 1,060                           | 0                            |
| CALIFORNIA     | 5,487               | 1,676           | 53                 | 0                          | 79                  | 767                              | 0                               | 0                            |
| COLORADO       | 45,346              | 644,924         | 85                 | 0                          | 4                   | 390,353                          | 149                             | 1,450                        |
| CONNECTICUT    | 70                  | 34              | 0                  | 0                          | 0                   | 0                                | 0                               | 0                            |
| DELAWARE       | 53                  | 23              | 0                  | 0                          | 3,378               | 2,069                            | 0                               | 0                            |
| FLORIDA        | 111                 | 151             | 9,709              | 11,622                     | 953                 | 3,395                            | 0                               | 0                            |
| GEORGIA        | 343                 | 390             | 28,309             | 126,017                    | 5,601               | 6,389                            | 91                              | 0                            |
| IDAHO          | 100,625             | 38,222          | 4,971              | 0                          | 57                  | 135,397                          | 167                             | 552                          |
| ILLINOIS       | 182,785             | 49,884          | 1,064              | 0                          | 52,195              | 141,059                          | 592                             | 2,667                        |
| INDIANA        | 40,063              | 31,535          | 773                | 0                          | 18,030              | 15,491                           | 432                             | 2,299                        |
| IOWA           | 255,518             | 155,329         | 347                | 0                          | 14,882              | 320,542                          | 725                             | 6,535                        |
| KANSAS         | 16,375              | 868,163         | 122                | 0                          | 517                 | 15,999                           | 625                             | 1,845                        |
| KENTUCKY       | 87,881              | 45,107          | 256                | 0                          | 6,017               | 697                              | 105                             | 8                            |
| LOUISIANA      | 183                 | 3,242           | 20,772             | 262                        | 119,520             | 33,626                           | 9                               | 0                            |
| MAINE          | 1,693               | 112             | 205                | 0                          | 3                   | 918                              | 0                               | 0                            |
| MARYLAND       | 12,365              | 3,740           | 579                | 0                          | 671                 | 2,125                            | 13                              | 0                            |
| MASSACHUSETTS  | 0                   | 0               | 0                  | 0                          | 0                   | 0                                | 0                               | 0                            |
| MICHIGAN       | 31,886              | 26,901          | 4,406              | 0                          | 4,014               | 26,157                           | 432                             | 2,464                        |
| MINNESOTA      | 239,695             | 136,857         | 9,169              | 0                          | 26,719              | 344,828                          | 428                             | 9,390                        |
| MISSISSIPPI    | 3,745               | 540             | 159,419            | 333                        | 96,856              | 8,028                            | 86                              | 0                            |
| MISSOURI       | 356,437             | 176,367         | 420                | 0                          | 16,982              | 6,604                            | 152                             | 114                          |
| MONTANA        | 681,434             | 862,610         | 129                | 0                          | 78                  | 33,612                           | 191                             | 317                          |
| NEBRASKA       | 36,220              | 434,707         | 796                | 0                          | 921                 | 51,781                           | 27                              | 30,107                       |
| NEW HAMPSHIRE  | 0                   | 0               | 0                  | 0                          | 0                   | 0                                | 0                               | 0                            |
| NEW JERSEY     | 1,147               | 363             | 66                 | 0                          | 49                  | 23                               | 0                               | 10                           |
| NEW MEXICO     | 2,334               | 175,725         | 80                 | 0                          | 0                   | 0                                | 0                               | 0                            |
| NEW YORK       | 8,626               | 1,102           | 522                | 0                          | 1,017               | 628                              | 37                              | 17                           |
| NORTH CAROLINA | 1,867               | 1,706           | 8,254              | 12,150                     | 1,442               | 2,873                            | 124                             | 20                           |
| NORTH DAKOTA   | 394,630             | 71,649          | 87                 | 0                          | 324                 | 582,182                          | 47                              | 4,909                        |
| OHIO           | 25,837              | 61,780          | 1,408              | 0                          | 7,630               | 46,695                           | 221                             | 2,737                        |
| OKLAHOMA       | 12,034              | 416,252         | 57                 | 0                          | 659                 | 2,715                            | 79                              | 56                           |
| OREGON         | 124,567             | 87,744          | 2,061              | 0                          | 76                  | 11,242                           | 1,367                           | 4                            |
| PENNSYLVANIA   | 106,951             | 36,300          | 228                | 0                          | 1,275               | 3,957                            | 52                              | 4                            |
| PUERTO RICO    | 108                 | 0               | 0                  | 0                          | 51                  | 0                                | 0                               | 0                            |
| SOUTH CAROLINA | 278                 | 120             | 28,531             | 19,863                     | 1,786               | 8,845                            | 0                               | 66                           |
| SOUTH DAKOTA   | 159,629             | 241,803         | 441                | 0                          | 119                 | 109,022                          | 82                              | 21,187                       |
| TENNESSEE      | 27,941              | 46,436          | 13,984             | 0                          | 4,541               | 12,909                           | 604                             | 0                            |
| TEXAS          | 91,416              | 1,726,122       | 2,412              | 0                          | 438                 | 41,659                           | 1,287                           | 43                           |
| UTAH           | 63,608              | 15,477          | 0                  | 0                          | 0                   | 773                              | 0                               | 4                            |
| VERMONT        | 0                   | 0               | 0                  | 0                          | 0                   | 0                                | 0                               | 5                            |
| VIRGINIA       | 3,795               | 2,830           | 6,749              | 0                          | 272                 | 668                              | 262                             | 3                            |
| WASHINGTON     | 131,691             | 727,930         | 1,295              | 0                          | 15                  | 184,501                          | 432                             | 13                           |
| WEST VIRGINIA  | 109                 | 22              | 119                | 0                          | 9                   | 0                                | 0                               | 0                            |
| WISCONSIN      | 43,274              | 58,672          | 5,977              | 0                          | 50,608              | 10,556                           | 253                             | 233                          |
| WYOMING        | 59,111              | 8,066           | 12                 | 0                          | 0                   | 26,896                           | 0                               | 254                          |
| UNDESIGNATED   | 0                   | 0               | 0                  | 0                          | 0                   | 146                              | 0                               | 0                            |
|                | =====               | =====           | =====              | =====                      | =====               | =====                            | =====                           | =====                        |
|                | 3,370,435           | 7,168,680       | 405,033            | 216,864                    | 490,009             | 2,599,057                        | 10,665                          | 87,314                       |

1/ Seedlings that meet multiple seasonal (e.g., nesting cover, winter cover) requirements for wildlife of local or regional concern.

**CONSERVATION PRACTICES INSTALLED ON CRP (ACRES)  
CUMULATIVE, AS OF MAY 2007, CON'T**

| STATE          | DIVERSIONS<br>& EROSION<br>CONTROL<br>STRUCT.<br>(CP6&CP7) | GRASS<br>WATERWAYS<br>(CP8) | SHALLOW<br>WATER FOR<br>WILDLIFE<br>(CP9) | EXISTING<br>GRASS<br>(CP10) | EXISTING<br>TREES<br>(CP11) | WILDLIFE<br>FOOD PLOTS<br>(CP12) | CONTOUR<br>GRASS<br>STRIPS<br>(CP15) | SHELTER-<br>BELTS<br>(CP16) |
|----------------|--|-----------------------------|---|-----------------------------|-----------------------------|----------------------------------|--------------------------------------|-----------------------------|
| ALABAMA        | 0  | 47                          | 172                                       | 111,664                     | 179,650                     | 1,728                            | 183                                  | 0                           |
| ALASKA         | 0  | 0                           | 5   | 23,454                      | 0                           | 20                               | 0                                    | 0                           |
| ARKANSAS       | 2  | 23                          | 1,086                                     | 27,321                      | 60,414                      | 632                              | 0                                    | 0                           |
| CALIFORNIA     | 0  | 0                           | 189                                       | 129,559                     | 345                         | 84                               | 0                                    | 0                           |
| COLORADO       | 226  | 871                         | 27  | 1,383,159                   | 223                         | 1,032                            | 427                                  | 4,613                       |
| CONNECTICUT    | 0  | 0                           | 0   | 131                         | 0                           | 0                                | 0                                    | 0                           |
| DELAWARE       | 0  | 4                           | 435                                       | 25                          | 38                          | 36                               | 4                                    | 0                           |
| FLORIDA        | 0  | 0                           | 0   | 2,167                       | 54,844                      | 148                              | 0                                    | 0                           |
| GEORGIA        | 8  | 93                          | 25  | 6,907                       | 125,866                     | 1,868                            | 38                                   | 0                           |
| IDAHO          | 4  | 15                          | 79  | 530,909                     | 2,696                       | 1,004                            | 65                                   | 211                         |
| ILLINOIS       | 27   | 31,773                      | 5,780                                     | 252,911                     | 18,589                      | 6,751                            | 2,077                                | 152                         |
| INDIANA        | 4  | 17,490                      | 1,653                                     | 86,626                      | 10,186                      | 1,349                            | 206                                  | 22                          |
| IOWA           | 18   | 34,750                      | 17,543                                    | 575,568                     | 9,662                       | 5,937                            | 30,871                               | 2,122                       |
| KANSAS         | 55   | 8,988                       | 1,075                                     | 1,743,214                   | 1,411                       | 6,129                            | 5,845                                | 748                         |
| KENTUCKY       | 4  | 4,073                       | 3,151                                     | 137,195                     | 2,186                       | 1,493                            | 72                                   | 0                           |
| LOUISIANA      | 7  | 14                          | 820                                       | 17,199                      | 44,144                      | 1,816                            | 0                                    | 0                           |
| MAINE          | 0  | 28                          | 0   | 19,596                      | 753                         | 2                                | 0                                    | 0                           |
| MARYLAND       | 0  | 283                         | 1,402                                     | 3,888                       | 625                         | 133                              | 0                                    | 0                           |
| MASSACHUSETTS  | 0  | 1                           | 0   | 53                          | 0                           | 0                                | 0                                    | 0                           |
| MICHIGAN       | 12   | 903                         | 2,394                                     | 97,554                      | 7,134                       | 2,093                            | 17                                   | 82                          |
| MINNESOTA      | 3  | 5,039                       | 966                                       | 298,396                     | 21,328                      | 5,334                            | 1,494                                | 3,921                       |
| MISSISSIPPI    | 2  | 64                          | 894                                       | 126,742                     | 369,384                     | 4,779                            | 31                                   | 0                           |
| MISSOURI       | 649  | 2,117                       | 2,726                                     | 834,370                     | 10,264                      | 4,142                            | 2,258                                | 36                          |
| MONTANA        | 0  | 101                         | 85  | 1,541,135                   | 923                         | 3,562                            | 0                                    | 275                         |
| NEBRASKA       | 10   | 2,065                       | 271                                       | 588,423                     | 3,491                       | 2,994                            | 645                                  | 2,398                       |
| NEW HAMPSHIRE  | 0  | 0                           | 0   | 0                           | 0                           | 0                                | 0                                    | 0                           |
| NEW JERSEY     | 5  | 58                          | 3   | 463                         | 27                          | 11                               | 4                                    | 0                           |
| NEW MEXICO     | 0  | 0                           | 0   | 406,806                     | 80                          | 38                               | 0                                    | 0                           |
| NEW YORK       | 1  | 84                          | 24  | 38,632                      | 1,264                       | 74                               | 4                                    | 0                           |
| NORTH CAROLINA | 0  | 201                         | 3,313                                     | 17,568                      | 41,382                      | 55                               | 0                                    | 13                          |
| NORTH DAKOTA   | 1  | 139                         | 15  | 1,389,444                   | 1,452                       | 5,446                            | 0                                    | 4,631                       |
| OHIO           | 0  | 9,083                       | 878                                       | 95,453                      | 5,786                       | 1,042                            | 18                                   | 107                         |
| OKLAHOMA       | 77   | 309                         | 112                                       | 599,207                     | 472                         | 1,622                            | 2                                    | 37                          |
| OREGON         | 0  | 77                          | 4   | 300,532                     | 1,459                       | 205                              | 17                                   | 2                           |
| PENNSYLVANIA   | 7  | 597                         | 76  | 55,691                      | 570                         | 1,616                            | 144                                  | 0                           |
| PUERTO RICO    | 0  | 0                           | 0   | 229                         | 121                         | 0                                | 0                                    | 0                           |
| SOUTH CAROLINA | 0  | 90                          | 2,003                                     | 10,633                      | 100,050                     | 773                              | 0                                    | 0                           |
| SOUTH DAKOTA   | 0  | 1,433                       | 249                                       | 513,500                     | 1,501                       | 11,686                           | 132                                  | 14,635                      |
| TENNESSEE      | 3  | 193                         | 156                                       | 129,213                     | 19,827                      | 474                              | 78                                   | 0                           |
| TEXAS          | 0  | 2,351                       | 161                                       | 2,147,820                   | 5,710                       | 6,348                            | 273                                  | 33                          |
| UTAH           | 0  | 14                          | 0   | 128,621                     | 0                           | 42                               | 0                                    | 0                           |
| VERMONT        | 0  | 2                           | 0   | 116                         | 0                           | 0                                | 0                                    | 0                           |
| VIRGINIA       | 0  | 62                          | 54  | 13,926                      | 14,271                      | 102                              | 1                                    | 0                           |
| WASHINGTON     | 0  | 468                         | 54  | 395,627                     | 1,234                       | 1,016                            | 38,501                               | 10                          |
| WEST VIRGINIA  | 0  | 0                           | 0   | 718                         | 9                           | 0                                | 0                                    | 0                           |
| WISCONSIN      | 3  | 1,876                       | 4,514                                     | 322,327                     | 31,680                      | 3,865                            | 1,240                                | 26                          |
| WYOMING        | 146  | 13                          | 0   | 183,810                     | 73                          | 138                              | 1                                    | 63                          |
| UNDESIGNATED   | 0  | 4                           | 0   | 0                           | 0                           | 0                                | 0                                    | 4                           |
|                | =====  | =====                       | =====                                     | =====                       | =====                       | =====                            | =====                                | =====                       |
|                | 1,273  | 125,795                     | 52,395                                    | 15,288,507                  | 1,151,128                   | 87,620                           | 84,647                               | 34,142                      |

**CONSERVATION PRACTICES INSTALLED ON CRP (ACRES)  
CUMULATIVE, AS OF MAY 2007, CON'T**

| STATE          | LIVING<br>SNOW FENCES<br>(CP17) | SALINITY<br>REDUCING<br>VEGETATION<br>(CP18) | FILTER-<br>STRIPS<br>(CP13 &<br>CP21) | RIPARIAN<br>BUFFERS<br>1/<br>(CP22) | WETLAND RESTORATION |                         |                                  | CROSS<br>WIND TRAP<br>STRIPS<br>(CP24) |
|----------------|---------------------------------|--|---------------------------------------|-------------------------------------|---------------------|-------------------------|----------------------------------|--|
|                |                                 |  |                                       |                                     | (CP23) 2/           | FLOODPLAIN<br>(CP23) 2/ | NON-<br>FLOODPLAIN<br>(CP23A) 3/ |  |
| ALABAMA        | 0                               | 0  | 892                                   | 33,505                              | 73                  | 0                       | 0                                | 0                                      |
| ALASKA         | 0                               | 0  | 10                                    | 198                                 | 0                   | 0                       | 0                                | 0                                      |
| ARKANSAS       | 0                               | 0  | 5,854                                 | 51,842                              | 13,703              | 10,280                  | 249                              | 0                                      |
| CALIFORNIA     | 0                               | 0  | 0                                     | 6,263                               | 5,105               | 0                       | 0                                | 0                                      |
| COLORADO       | 46                              | 127  | 311                                   | 903                                 | 1,077               | 0                       | 39                               | 32                                     |
| CONNECTICUT    | 0                               | 0  | 34                                    | 63                                  | 0                   | 0                       | 0                                | 0                                      |
| DELAWARE       | 0                               | 0  | 1,386                                 | 129                                 | 256                 | 81                      | 0                                | 0                                      |
| FLORIDA        | 0                               | 0  | 0                                     | 68                                  | 0                   | 0                       | 0                                | 0                                      |
| GEORGIA        | 0                               | 0  | 520                                   | 1,466                               | 321                 | 0                       | 0                                | 0                                      |
| IDAHO          | 71                              | 0  | 1,243                                 | 7,190                               | 1,432               | 0                       | 0                                | 0                                      |
| ILLINOIS       | 58                              | 6  | 149,449                               | 109,240                             | 42,819              | 4,812                   | 980                              | 0                                      |
| INDIANA        | 1                               | 1  | 61,171                                | 5,562                               | 5,943               | 1,273                   | 665                              | 0                                      |
| IOWA           | 554                             | 0  | 244,821                               | 64,474                              | 15,573              | 30,372                  | 3,076                            | 41                                     |
| KANSAS         | 79                              | 2,272  | 30,694                                | 4,498                               | 3,976               | 2,038                   | 1,200                            | 223                                    |
| KENTUCKY       | 0                               | 0  | 35,424                                | 16,098                              | 35                  | 53                      | 56                               | 0                                      |
| LOUISIANA      | 0                               | 0  | 655                                   | 5,320                               | 23,508              | 19,608                  | 2,795                            | 0                                      |
| MAINE          | 0                               | 0  | 128                                   | 204                                 | 0                   | 0                       | 0                                | 0                                      |
| MARYLAND       | 0                               | 0  | 40,266                                | 16,785                              | 2,020               | 370                     | 0                                | 0                                      |
| MASSACHUSETTS  | 0                               | 0  | 15                                    | 5                                   | 0                   | 0                       | 0                                | 0                                      |
| MICHIGAN       | 3                               | 0  | 47,226                                | 3,488                               | 10,992              | 1,785                   | 5,121                            | 0                                      |
| MINNESOTA      | 3,466                           | 7,605  | 160,616                               | 46,469                              | 305,332             | 20,260                  | 4,260                            | 9                                      |
| MISSISSIPPI    | 0                               | 0  | 8,139                                 | 155,672                             | 11,186              | 1,888                   | 0                                | 0                                      |
| MISSOURI       | 0                               | 0  | 44,192                                | 27,938                              | 3,852               | 4,857                   | 165                              | 0                                      |
| MONTANA        | 34                              | 151,050                                      | 121                                   | 2,443                               | 4,395               | 0                       | 0                                | 47                                     |
| NEBRASKA       | 155                             | 1,137  | 21,826                                | 3,224                               | 14,406              | 715                     | 319                              | 46                                     |
| NEW HAMPSHIRE  | 0                               | 0  | 163                                   | 19                                  | 0                   | 0                       | 0                                | 0                                      |
| NEW JERSEY     | 0                               | 0  | 302                                   | 99                                  | 1                   | 0                       | 0                                | 0                                      |
| NEW MEXICO     | 0                               | 0  | 0                                     | 5,766                               | 0                   | 0                       | 0                                | 0                                      |
| NEW YORK       | 0                               | 0  | 539                                   | 12,225                              | 51                  | 12                      | 31                               | 0                                      |
| NORTH CAROLINA | 0                               | 0  | 7,051                                 | 31,251                              | 1,159               | 868                     | 0                                | 0                                      |
| NORTH DAKOTA   | 500                             | 124,524                                      | 9,249                                 | 601                                 | 767,019             | 487                     | 3,621                            | 10                                     |
| OHIO           | 3                               | 0  | 70,472                                | 5,748                               | 3,619               | 1,376                   | 874                              | 4                                      |
| OKLAHOMA       | 4                               | 9,180  | 879                                   | 1,672                               | 1,238               | 0                       | 161                              | 0                                      |
| OREGON         | 0                               | 0  | 2,863                                 | 29,601                              | 365                 | 0                       | 0                                | 0                                      |
| PENNSYLVANIA   | 0                               | 0  | 1,973                                 | 18,537                              | 321                 | 554                     | 0                                | 0                                      |
| PUERTO RICO    | 0                               | 0  | 0                                     | 94                                  | 0                   | 0                       | 0                                | 0                                      |
| SOUTH CAROLINA | 0                               | 0  | 4,866                                 | 28,013                              | 284                 | 0                       | 0                                | 0                                      |
| SOUTH DAKOTA   | 453                             | 11,698                                       | 8,558                                 | 4,459                               | 385,717             | 2,899                   | 4,498                            | 15                                     |
| TENNESSEE      | 0                               | 0  | 9,915                                 | 6,265                               | 834                 | 0                       | 0                                | 0                                      |
| TEXAS          | 0                               | 1,083  | 1,986                                 | 31,834                              | 8,759               | 10                      | 280                              | 257                                    |
| UTAH           | 0                               | 0  | 39                                    | 205                                 | 0                   | 0                       | 0                                | 0                                      |
| VERMONT        | 0                               | 0  | 195                                   | 1,660                               | 0                   | 0                       | 0                                | 0                                      |
| VIRGINIA       | 0                               | 0  | 4,647                                 | 20,356                              | 229                 | 36                      | 0                                | 38                                     |
| WASHINGTON     | 0                               | 372  | 50,240                                | 22,306                              | 3,510               | 0                       | 0                                | 14                                     |
| WEST VIRGINIA  | 0                               | 0  | 237                                   | 3,097                               | 0                   | 0                       | 0                                | 0                                      |
| WISCONSIN      | 37                              | 0  | 26,949                                | 16,698                              | 11,692              | 927                     | 178                              | 0                                      |
| WYOMING        | 4                               | 0  | 9                                     | 5,126                               | 0                   | 0                       | 0                                | 17                                     |
| UNDESIGNATED   | 0                               | 0  | 0                                     | 47                                  | 0                   | 0                       | 0                                | 0                                      |
| =====          |                                 |  |                                       |                                     |                     |                         |                                  |  |
|                | 5,467                           | 309,054                                      | 1,056,126                             | 808,726                             | 1,650,802           | 105,560                 | 28,567                           | 752                                    |

1/ Includes cropland and marginal pasture.

2/ Acres enrolled under general sign-up and CREP through 2003.

3/ Acres enrolled under continuous/CREP sign-up after 2003.

**CONSERVATION PRACTICES INSTALLED ON CRP (ACRES)  
CUMULATIVE, AS OF MAY 2007, CON'T**

| STATE          | RARE AND<br>DECLINING<br>HABITAT<br>(CP25) | FARMABLE WETLAND<br>PROGRAM |                  | MARGINAL PASTURE<br>BUFFERS |                   | BOTTOMLAND<br>HARDWOOD<br>TREES<br>(CP31) | EXPIRED<br>HARDWOOD<br>TREES<br>(CP32) | UPLAND<br>BIRD<br>HABITAT<br>BUFFERS<br>(CP33) |
|----------------|--|-----------------------------|------------------|-----------------------------|-------------------|---|--|--|
|                |  | WETLAND<br>(CP27)           | BUFFER<br>(CP28) | WILDLIFE<br>(CP29)          | WETLAND<br>(CP30) |   |  |  |
| ALABAMA        | 510  | 0                           | 0                | 59                          | 0                 | 754                                       | 0                                      | 919  |
| ALASKA         | 0  | 0                           | 0                | 0                           | 327               | 0   | 0                                      | 0  |
| ARKANSAS       | 0  | 0                           | 0                | 131                         | 1                 | 5,127                                     | 393                                    | 4,014  |
| CALIFORNIA     | 0  | 0                           | 0                | 413                         | 0                 | 0   | 0                                      | 0  |
| COLORADO       | 541  | 0                           | 0                | 189                         | 6                 | 0   | 0                                      | 1  |
| CONNECTICUT    | 0  | 0                           | 0                | 0                           | 0                 | 0   | 0                                      | 0  |
| DELAWARE       | 0  | 0                           | 0                | 0                           | 0                 | 0   | 0                                      | 0  |
| FLORIDA        | 0  | 0                           | 0                | 0                           | 0                 | 0   | 0                                      | 0  |
| GEORGIA        | 0  | 0                           | 0                | 1                           | 0                 | 25  | 0                                      | 1,747  |
| IDAHO          | 37   | 0                           | 0                | 190                         | 302               | 0   | 0                                      | 0  |
| ILLINOIS       | 2,220                                      | 112                         | 198              | 219                         | 24                | 1,355                                     | 637                                    | 26,235   |
| INDIANA        | 2,078                                      | 299                         | 592              | 104                         | 8                 | 2,082                                     | 575                                    | 9,094  |
| IOWA           | 83,129                                     | 20,708                      | 51,534           | 7,661                       | 1,954             | 919                                       | 1,561                                  | 19,426   |
| KANSAS         | 515,351                                    | 262                         | 504              | 19                          | 0                 | 74  | 0                                      | 27,285   |
| KENTUCKY       | 9,445                                      | 0                           | 0                | 2,516                       | 5                 | 222                                       | 234                                    | 6,830  |
| LOUISIANA      | 0  | 0                           | 0                | 0                           | 0                 | 16,585                                    | 922                                    | 287  |
| MAINE          | 0  | 0                           | 0                | 0                           | 12                | 0   | 0                                      | 0  |
| MARYLAND       | 0  | 1                           | 4                | 490                         | 4                 | 0   | 0                                      | 476  |
| MASSACHUSETTS  | 0  | 0                           | 0                | 0                           | 0                 | 0   | 0                                      | 0  |
| MICHIGAN       | 339  | 13                          | 20               | 0                           | 214               | 11  | 0                                      | 430  |
| MINNESOTA      | 139,418                                    | 11,074                      | 26,137           | 850                         | 4,008             | 223                                       | 1,921                                  | 188  |
| MISSISSIPPI    | 0  | 0                           | 0                | 37                          | 15                | 4,913                                     | 757                                    | 2,020  |
| MISSOURI       | 73,418                                     | 4                           | 5                | 606                         | 1,609             | 620                                       | 546                                    | 21,657   |
| MONTANA        | 192,854                                    | 49                          | 96               | 100                         | 0                 | 0   | 0                                      | 0  |
| NEBRASKA       | 136,272                                    | 1,428                       | 2,331            | 957                         | 123               | 0   | 0                                      | 4,425  |
| NEW HAMPSHIRE  | 0  | 0                           | 0                | 0                           | 0                 | 0   | 0                                      | 0  |
| NEW JERSEY     | 0  | 0                           | 0                | 0                           | 0                 | 0   | 0                                      | 0  |
| NEW MEXICO     | 0  | 0                           | 0                | 0                           | 0                 | 0   | 0                                      | 0  |
| NEW YORK       | 0  | 0                           | 0                | 1,456                       | 343               | 0   | 0                                      | 0  |
| NORTH CAROLINA | 0  | 0                           | 0                | 35                          | 0                 | 2   | 0                                      | 6,024  |
| NORTH DAKOTA   | 7,009                                      | 4,471                       | 11,888           | 0                           | 0                 | 0   | 0                                      | 0  |
| OHIO           | 6,886                                      | 28                          | 69               | 1,657                       | 31                | 57  | 39                                     | 10,857   |
| OKLAHOMA       | 25,754                                     | 0                           | 0                | 6                           | 9                 | 398                                       | 77                                     | 987  |
| OREGON         | 7  | 0                           | 0                | 7,753                       | 36                | 0   | 0                                      | 0  |
| PENNSYLVANIA   | 0  | 0                           | 0                | 940                         | 347               | 2   | 0                                      | 0  |
| PUERTO RICO    | 0  | 0                           | 0                | 342                         | 0                 | 0   | 0                                      | 0  |
| SOUTH CAROLINA | 0  | 0                           | 0                | 47                          | 36                | 0   | 0                                      | 5,390  |
| SOUTH DAKOTA   | 14,321                                     | 10,819                      | 24,259           | 2,580                       | 11,003            | 0   | 0                                      | 791  |
| TENNESSEE      | 0  | 0                           | 0                | 8                           | 0                 | 2,496                                     | 1                                      | 4,074  |
| TEXAS          | 52   | 0                           | 0                | 1,492                       | 2                 | 381                                       | 0                                      | 3,416  |
| UTAH           | 0  | 0                           | 0                | 26                          | 0                 | 0   | 0                                      | 0  |
| VERMONT        | 0  | 0                           | 0                | 0                           | 3                 | 0   | 0                                      | 0  |
| VIRGINIA       | 0  | 0                           | 0                | 134                         | 0                 | 0   | 0                                      | 854  |
| WASHINGTON     | 107  | 0                           | 0                | 316                         | 0                 | 0   | 0                                      | 0  |
| WEST VIRGINIA  | 0  | 0                           | 0                | 0                           | 0                 | 0   | 0                                      | 0  |
| WISCONSIN      | 14,716                                     | 16                          | 27               | 1,061                       | 28                | 0   | 948                                    | 241  |
| WYOMING        | 0  | 0                           | 0                | 586                         | 0                 | 0   | 0                                      | 0  |
| UNDESIGNATED   | 0  | 0                           | 0                | 0                           | 0                 | 0   | 0                                      | 0  |
|                | 1,224,467                                  | 49,286                      | 117,663          | 32,981                      | 20,448            | 36,245                                    | 8,611                                  | 157,669  |

**CONSERVATION PRACTICES INSTALLED ON CRP (ACRES)  
CUMULATIVE, AS OF MAY 2007, CON'T**

| STATE          | LONGLEAF<br>PINE<br>INITIATIVE<br>(CP36) | DUCK NESTING<br>HABITAT<br>INITIATIVE<br>(CP37) | OTHER | TOTAL      |
|----------------|--|---|-------|------------|
| ALABAMA        | 0  | 0   | 0     | 494,674    |
| ALASKA         | 0  | 0   | 0     | 29,789     |
| ARKANSAS       | 0  | 0   | 0     | 236,543    |
| CALIFORNIA     | 0  | 0   | 0     | 150,017    |
| COLORADO       | 0  | 0   | 0     | 2,476,160  |
| CONNECTICUT    | 0  | 0   | 0     | 332        |
| DELAWARE       | 0  | 0   | 0     | 7,917      |
| FLORIDA        | 0  | 0   | 0     | 83,167     |
| GEORGIA        | 6,394                                    | 30  | 0     | 312,448    |
| IDAHO          | 0  | 0   | 0     | 825,440    |
| ILLINOIS       | 0  | 0   | -5    | 1,086,667  |
| INDIANA        | 0  | 0   | 1     | 315,607    |
| IOWA           | 0  | 0   | 73    | 1,976,223  |
| KANSAS         | 0  | 0   | 0     | 3,259,601  |
| KENTUCKY       | 19                                       | 0   | 0     | 359,183    |
| LOUISIANA      | 34                                       | 0   | 0     | 311,330    |
| MAINE          | 0  | 0   | 0     | 23,655     |
| MARYLAND       | 0  | 0   | 0     | 86,241     |
| MASSACHUSETTS  | 0  | 0   | 0     | 74         |
| MICHIGAN       | 0  | 0   | -0    | 276,101    |
| MINNESOTA      | 0  | 131   | 0     | 1,835,534  |
| MISSISSIPPI    | 275                                      | 0   | 0     | 955,805    |
| MISSOURI       | 0  | 0   | 0     | 1,593,108  |
| MONTANA        | 0  | 0   | 0     | 3,475,640  |
| NEBRASKA       | 0  | 0   | 2     | 1,342,223  |
| NEW HAMPSHIRE  | 0  | 0   | 0     | 182        |
| NEW JERSEY     | 0  | 0   | 0     | 2,631      |
| NEW MEXICO     | 0  | 0   | 0     | 590,828    |
| NEW YORK       | 0  | 0   | 5     | 66,692     |
| NORTH CAROLINA | 194                                      | 0   | 0     | 137,551    |
| NORTH DAKOTA   | 0  | 2,697   | -6    | 3,387,024  |
| OHIO           | 0  | 0   | 0     | 360,395    |
| OKLAHOMA       | 0  | 0   | 0     | 1,074,055  |
| OREGON         | 0  | 0   | -1    | 569,982    |
| PENNSYLVANIA   | 0  | 0   | 134   | 230,278    |
| PUERTO RICO    | 0  | 0   | 0     | 945        |
| SOUTH CAROLINA | 45                                       | 0   | 0     | 211,720    |
| SOUTH DAKOTA   | 0  | 1,243   | 2     | 1,558,738  |
| TENNESSEE      | 0  | 0   | 0     | 279,952    |
| TEXAS          | 0  | 0   | 0     | 4,075,626  |
| UTAH           | 0  | 0   | 0     | 208,809    |
| VERMONT        | 0  | 0   | 0     | 1,981      |
| VIRGINIA       | 2  | 0   | 0     | 69,292     |
| WASHINGTON     | 0  | 0   | 0     | 1,559,652  |
| WEST VIRGINIA  | 0  | 0   | 0     | 4,319      |
| WISCONSIN      | 0  | 0   | 0     | 608,674    |
| WYOMING        | 0  | 0   | 0     | 284,325    |
| UNDESIGNATED   | 0  | 0   | 0     | 201        |
|                | =====                                    | =====   | ===== | =====      |
|                | 6,962                                    | 4,102   | 204   | 36,797,332 |

**CONSERVATION PRACTICES INSTALLED ON CRP (ACRES)  
BY SIGN-UP TYPE, CUMULATIVE, AS OF MAY 2007**

| PRACTICE     |                                     | GENERAL<br>SIGN-UP | CONTIN.<br>CREP | CONTIN.<br>NON-CREP 1/ | FARMABLE<br>WETLAND | TOTAL             |
|--------------|-------------------------------------|--------------------|-----------------|------------------------|---------------------|-------------------|
| CP1          | NEW INTROD. GRASSES AND LEGUMES     | 3,159,218          | 139,139         | 72,078                 | 0                   | 3,370,435         |
| CP2          | NEW NATIVE GRASSES                  | 6,966,019          | 181,724         | 20,938                 | 0                   | 7,168,680         |
| CP3          | NEW SOFTWOOD TREES (NOT LONGLEAF)   | 403,517            | 1,191           | 325                    | 0                   | 405,033           |
| CP3A         | NEW LONGLEAF PINES                  | 216,864            | 0               | 0                      | 0                   | 216,864           |
| CP3A         | NEW HARDWOOD TREES                  | 476,842            | 12,214          | 953                    | 0                   | 490,009           |
| CP4          | PERMANENT WILDLIFE HABITAT          | 2,508,362          | 87,539          | 3,156                  | 0                   | 2,599,057         |
| CP4B         | WILDLIFE HABITAT CORRIDORS          | 10,301             | 237             | 127                    | 0                   | 10,665            |
| CP5          | FIELD WINDBREAKS                    | 212                | 3,895           | 83,207                 | 0                   | 87,314            |
| CP6          | DIVERSIONS                          | 799                | 0               | 0                      | 0                   | 799               |
| CP7          | EROSION CONTROL STRUCTURES          | 473                | 1               | 0                      | 0                   | 474               |
| CP8          | GRASS WATERWAYS                     | 9                  | 734             | 125,052                | 0                   | 125,795           |
| CP9          | SHALLOW WATER AREAS FOR WILDLIFE    | 2                  | 2,785           | 49,608                 | 0                   | 52,395            |
| CP10         | EXISTING GRASSES AND LEGUMES 2/     | 15,235,911         | 14,466          | 38,129                 | 0                   | 15,288,507        |
| CP11         | EXISTING TREES                      | 1,150,545          | 583             | 0                      | 0                   | 1,151,128         |
| CP12         | WILDLIFE FOOD PLOTS                 | 85,337             | 2,283           | 0                      | 0                   | 87,620            |
| CP13         | VEGETATIVE FILTER STRIPS            | 89                 | 0               | 0                      | 0                   | 89                |
| CP15         | CONTOUR GRASS STRIPS                | 3                  | 325             | 84,319                 | 0                   | 84,647            |
| CP16         | SHELTERBELTS                        | 205                | 391             | 33,546                 | 0                   | 34,142            |
| CP17         | LIVING SNOW FENCES                  | 0                  | 0               | 5,467                  | 0                   | 5,467             |
| CP18         | SALINITY REDUCING VEGETATION        | 0                  | 0               | 309,054                | 0                   | 309,054           |
| CP19         | ALLEY CROPPING                      | 52                 | 0               | 0                      | 0                   | 52                |
| CP20         | ALTERNATIVE PERENNIALS              | 13                 | 0               | 0                      | 0                   | 13                |
| CP21         | FILTER STRIPS (GRASS)               | 0                  | 159,708         | 896,329                | 0                   | 1,056,037         |
| CP22         | RIPARIAN BUFFERS                    | 0                  | 179,972         | 628,753                | 0                   | 808,726           |
| CP23         | WETLAND RESTORATION                 | 1,562,990          | 87,811          | 0                      | 0                   | 1,650,802         |
| CP23         | WETLAND REST. (FLOODPLAIN)          | 0                  | 8,195           | 97,365                 | 0                   | 105,560           |
| CP23A        | WETLAND REST. (NON-FLOODPLAIN)      | 0                  | 6,012           | 22,555                 | 0                   | 28,567            |
| CP24         | CROSS WIND TRAP STRIPS              | 0                  | 38              | 714                    | 0                   | 752               |
| CP25         | RARE AND DECLINING HABITAT          | 1,182,458          | 42,008          | 0                      | 0                   | 1,224,467         |
| CP26         | SEDIMENT RETENTION                  | 0                  | 9               | 0                      | 0                   | 9                 |
| CP27         | FARMABLE WETLAND PILOT (WETLAND)    | 0                  | 0               | 0                      | 49,286              | 49,286            |
| CP28         | FARMABLE WETLAND PILOT (UPLAND)     | 0                  | 0               | 0                      | 117,663             | 117,663           |
| CP29         | WILDLIFE HABITAT BUFFER (MARG PAST) | 0                  | 10,781          | 22,199                 | 0                   | 32,981            |
| CP30         | WETLAND BUFFER (MARG PAST)          | 0                  | 814             | 19,634                 | 0                   | 20,448            |
| CP31         | BOTTOMLAND HARDWOOD INITIATIVE      | 0                  | 12,425          | 23,820                 | 0                   | 36,245            |
| CP32         | HARDWOOD TREES (PREVIOUS EXPIRED)   | 8,611              | 0               | 0                      | 0                   | 8,611             |
| CP33         | UPLAND BIRD HABITAT BUFFER INIT.    | 0                  | 1,348           | 156,321                | 0                   | 157,669           |
| CP36         | LONGLEAF PINE INITIATIVE            | 0                  | 0               | 6,962                  | 0                   | 6,962             |
| CP37         | DUCK NESTING HABITAT INITIATIVE     | 0                  | 0               | 4,102                  | 0                   | 4,102             |
| UNDESIGNATED |                                     | 2                  | 139             | 63                     | 0                   | 204               |
| <b>TOTAL</b> |                                     | <b>32,968,835</b>  | <b>956,771</b>  | <b>2,704,776</b>       | <b>166,949</b>      | <b>36,797,332</b> |

1/ Includes 169,056 acres in designated wellhead protection areas.

2/ Includes both introduced grasses, legumes, and native grasses.

---

For more information about this summary, contact Alex Barbarika at 202-720-7093 or at [Alexander.Barbarika@wdc.usda.gov](mailto:Alexander.Barbarika@wdc.usda.gov). Additional information about CRP (including monthly and annual summaries) are posted at FSA's CRP website.

---