



"The USDA Farm Service Agency delivered nearly \$127.3 million in federal program payments and loans to Oregon farmers and ranchers during fiscal year 2012. Oregon agriculture benefits greatly from the tireless efforts of our dedicated employees and locally elected County Committees."

Lynn Voigt - State Executive Director

Commodity Program Payments: \$32.4 million

Oregon producers received substantial monetary support during FY 2012 in the form of commodity and price support program payments.

\$17,829,031 - Direct and Counter Cyclical Program (DCP) Direct payments provide income support to producers of eligible commodities based on production history (acreage and yields) and do not depend on the current production choices. Counter-cyclical payments are made when the effective price for eligible commodities is less than the target price.

\$4,323,516 - Average Crop Revenue Election Program (ACRE) provides revenue-based payments as an alternative to receiving price-based counter-cyclical (CC) payments.

\$4,234,705 - Milk Income Loss Contract (MILC) provides compensation to dairy producers when domestic milk prices fall below a specified level.



\$12,000 - Trade Adjustment Assistance (TAA) for Farmers provides technical assistance and cash payments to producers of shrimp and catfish who were adversely affected by imports.

\$1,187,576 - Farm Storage Facility Loans (FSFL) The Commodity Credit Corporation (CCC), through FSA, may make loans to producers to build or upgrade farm storage and handling facilities for eligible commodities.

\$4,802,378 - Commodity Loans are available to eligible producers who use crops as collateral. The Commodity Credit Corporation (CCC) makes loans for eligible commodities that are farm or warehouse stored.

Top 5 agriculture commodities, 2011			
	Value of receipts thousand	Percent of state total farm receipts	Percent of US value
1. Greenhouse/nursery	830,114	18.0	5.3
2. Cattle and calves	633,484	13.7	1.0
3. Dairy products	525,798	11.4	1.3
4. Wheat	466,388	10.1	3.2
5. Hay	348,745	7.5	5.2
All commodities	4,623,647		1.2

Top 5 agriculture exports, estimates, 2011		
	Rank among states	Value million \$
1. Other products 1/	9	619.4
2. Wheat	10	354.9
3. Planting seeds	1	331.5
4. Fruits, fresh	4	138.1
5. Fruits, processed	4	88.1
Total exports	25	1,976.0

Source: www.ERS.gov

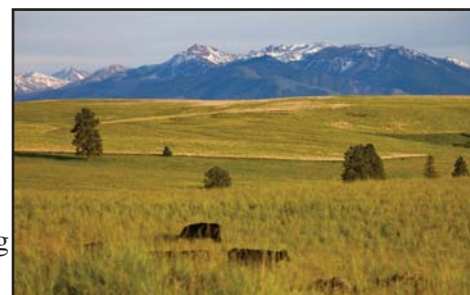
Conservation: \$31.9 million

FSA made significant investments toward conserving and improving soil, water, and wildlife resources in Oregon. Conservation investments in FY 2012 include:

\$31,339,944 - Conservation Reserve Program (CRP) provides financial incentives, cost-share and rental payments to producers who convert highly erodible cropland or environmentally sensitive acreage to long-term vegetative cover and who install riparian buffers in key erodible waterway locations.

\$254,019 - Emergency Conservation Program (ECP) provides emergency funding for farmers and ranchers to rehabilitate farmland damaged by natural disasters and carry out emergency water conservation measures during periods of severe drought.

\$320,147 - Grassland Reserve Program (GRP) is a voluntary program designed to protect grasslands from conversion to cropland or other uses and conserve valuable grasslands by maintaining viable ranching operations.



Disaster Assistance: \$8.7 million

From drought to flood, freeze and tornadoes - FSA was financially responsive to Oregon producers following natural disasters.

\$399,847 - Non-Insured Crop Disaster Assistance Program (NAP) provides financial assistance to producers of noninsurable crops when low yields, loss of inventory, or prevented planting occurs due to natural disasters.

\$7,266,850 - Supplemental Revenue Assistance Payment (SURE) provides benefits for 2008 through 2011 crop year farm revenue losses due to natural disasters. It is the 2008 Farm Bill's successor to prior ad hoc crop disaster programs.

\$18,148 - Livestock Indemnity Program (LIP) provides partial reimbursements to eligible livestock owners for livestock losses suffered due to a natural disaster or other emergency.

Farm Loans: \$54.3 million

FSA serves as the lender of first opportunity for Oregon farmers and ranchers who manage family-sized operations.

\$33,852,000 - Guaranteed Loan Program FSA guarantees loans made by conventional agricultural lenders for up to 95 percent of any loss if the loan fails. In FY 2012, FSA guaranteed 39 farm ownership loans and 61 operating loans.

\$20,278,000 - Direct Loan Program FSA provides assistance to those unable to obtain guaranteed loans. In FY 2012, FSA funded 21 farm ownership loans and 273 operating loans. Included in the direct and guaranteed direct loans are 67 youth loans (\$119,655), 185 loans to beginning farmers (\$15.4M) and 67 loans to socially disadvantaged producers (\$5.5M).



\$833,473 - Tree Assistance Program (TAP) provides financial assistance to qualifying orchardists and nursery tree growers to replant or rehabilitate eligible trees, bushes and vines damaged by natural disasters.

\$188,654 - Emergency Assistance for Livestock, Honeybees, and Farm-Raised Fish Program (ELAP) provide emergency assistance to eligible producers of livestock, honeybees and farm-raised fish that have losses due to disease, adverse weather or other conditions, including losses due to blizzards and wildfires, as determined by the Secretary.

Oregon FSA Payments and Loans by County

(Includes commodity loans, programs, conservation, and disaster payments, as well as farm loan obligations)

COUNTY	PROGRAMS	LOANS
Baker	\$1,042,631	\$1,827,000
Benton	\$691,990	\$912,000
Clackamas	\$386,032	\$741,000
Clatsop	\$45,166	-
Columbia	\$70,226	-
Coos	\$196,881	\$970,000
Crook	\$264,363	\$672,000
Curry	\$99,953	\$1,000
Deschutes	\$69,041	\$552,000
Douglas	\$398,457	\$216,000
Gilliam	\$5,732,309	\$84,000
Grant	\$401,388	\$1,135,000
Harney	\$264,142	\$6,722,000
Hood River	\$274,253	\$935,000
Jackson	\$251,704	\$587,000
Jefferson	\$1,215,902	\$256,000
Josephine	\$130,749	-
Klamath	\$1,013,693	\$1,928,000
Lake	\$211,996	\$463,000
Lane	\$271,058	\$2,067,000
Lincoln	\$28,402	-
Linn	\$863,172	\$3,302,000
Malheur	\$2,101,647	\$16,040,000
Marion	\$2,267,203	\$2,316,000
Morrow	\$11,724,658	\$1,204,000
Multnomah	\$37,767	-
Polk	\$1,072,154	\$399,000
Sherman	\$8,059,651	\$199,000
Tillamook	\$1,852,145	\$175,000
Umatilla	\$18,196,733	\$4,592,000
Union	\$2,542,908	\$2,241,000
Wallowa	\$1,828,044	\$489,000
Wasco	\$6,266,831	\$1,933,000
Washington	\$1,082,082	\$26,000
Wheeler	\$383,821	\$127,000
Yamhill	\$1,668,221	\$1,208,000

*** Counties not listed paid out less than \$1K in FSA benefits.