

NEWSLETTER



August 2020

Big Horn County FSA

408 Greybull Ave.
Greybull, WY 82426
Phone: 307-765-2689
Fax: 855-451-3432
Hours: 8:00 a.m.- 4:30 p.m.

County Executive Director:

Brenda Miller

Program Technician:

Connie Werbelow

Farm Loan:

Bill Morrison- Worland
Tom Schambow- Powell

County Committee:

Michael Rasmussen- Chairman
Spencer Ellis- Vice-Chairman
Martin Mercer- Member

Next Committee Meeting:

August 11, 2020 1:30PM

Message From Big Horn County FSA

It's harvest time and everyone will be getting busy in the fields. There are a few deadlines coming up that we want to make sure everyone is aware of and all who want to participate have completed the appropriate signups.

Acreage reporting ended July 15, 2020, but due to the COVID-19 situation we can accept late-filed reports through **August 15, 2020** without assessing a late fee. If you haven't completed your acreage report it is important that you get this completed since many of our program require an acreage report, even for your grazing.

The Coronavirus Food Assistance Program (CFAP) signup up deadline is **August 28, 2020**. This program is making payments on cattle, lambs, and pigs, 2019 corn, wheat, and 2019 -20 wool sheared by April 15, 2020. Additional information is available online at farmers.gov/cfap, calling the national helpline at 877-508-8364, or by calling this office.

Big Horn County had hit the D3 intensity on the US Drought Monitor. As of time of this newsletter we had been at this intensity for three weeks, which makes our county eligible for the Livestock Forage Program (LFP) for 3 months of payments. If we continue for one more week at D3 our county will be eligible for 4 months of payments. We are now accepting application for LFP, stop by or call with questions or to complete your signup. The deadline to complete this signup is January 31, 2021.

October 15, 2020 is the final grazing date for the Non-Insurable Assistance Program (NAP). Our office will be sending out the Independent Assessment Team to evaluate the grazing loss for this year. If these assessments come back with a grazing loss greater than 50% there will be payments made to anyone who purchased the NAP coverage. Stay tuned for further information on this program in the following months.

Disaster Assistance for 2020 Livestock Forage Losses

Producers in Big Horn County are eligible to apply for 2020 Livestock Forage Disaster Program (LFP) benefits on native pasture and improved pasture, LFP provides compensation if you suffer grazing losses for covered livestock due to drought on privately owned or cash leased land or fire on federally managed land.

County committees can only accept LFP applications after notification is received by the National Office of qualifying drought or if a federal agency prohibits producers from grazing normal permitted livestock on federally managed lands due to qualifying fire. You must complete a CCC-853 and the required supporting documentation no later than January 31, 2021, for 2020 losses.

For additional information about LFP, including eligible livestock and fire criteria, contact the Big Horn County USDA Service Center at (307)765-2689 Ext 2 or visit fsa.usda.gov.

Maintaining ARC/PLC Acreage

If you're enrolled in the Agriculture Risk Coverage (ARC) or Price Loss Coverage (PLC) programs, you must protect all cropland and noncropland acres on the farm from wind and water erosion and noxious weeds. By signing ARC county or individual contracts and PLC contracts, you agree to effectively control noxious weeds on the farm according to sound agricultural practices. If you fail to take necessary actions to correct a maintenance problem on your farm that is enrolled in ARC or PLC, the County Committee may elect to terminate your contract for the program year.

Report Noninsured Crop Disaster Assistance Program (NAP) Losses

The Noninsured Crop Disaster Assistance Program (NAP) provides financial assistance to producers of noninsurable crops when low yields, loss of inventory, or prevented planting occur due to natural disasters including drought (includes native grass for grazing).

To receive payment, you had to purchase NAP coverage for 2020 crops and file a notice of loss the earlier of 15 days of the occurrence of the disaster or when losses become apparent or 15 days of the final harvest date. For hand-harvested crops and certain perishable crops, you must notify FSA within 72 hours of when a loss becomes apparent.

Eligible crops must be commercially produced agricultural commodities for which crop insurance is not available, including perennial grass forage and grazing crops, fruits, vegetables, mushrooms, floriculture, ornamental nursery, aquaculture, turf grass, ginseng, honey, syrup, bioenergy, and industrial crops.

USDA Issues Coronavirus Food Assistance Program Payments

Wyoming Farm Service Agency Offices have gotten over \$50 million into the hands of producers. If you are a farmer or rancher that may have qualifying commodities, please contact your local FSA office before the August 28 deadline.

FSA will accept applications through August 28, 2020. Through CFAP, USDA is making available \$16 billion in financial assistance to producers of agricultural commodities who have suffered a five-percent-or-greater price decline due to COVID-19 and face additional significant marketing costs as a result of lower demand, surplus production, and disruptions to shipping patterns and the orderly marketing of commodities.

In order to do this, producers will receive 80 percent of their maximum total payment upon approval of the application. The remaining portion of the payment, not to exceed the payment limit, will be paid at a later date nationwide, as funds remain available.

Getting Help from FSA

New customers seeking one-on-one support with the CFAP application process can call 877-508-8364 to speak directly with a USDA employee ready to offer general assistance. This is a recommended first step before a producer engages the team at the FSA county office at their local USDA Service Center.

Producers can download the CFAP application and other eligibility forms from farmers.gov/cfap. Also, on that webpage, producers can find a payment calculator to help producers identify sales and inventory records needed to apply and calculate potential payments. Producers self-certify their records when applying for CFAP and that documentation is not submitted with the application. However, producers may be asked for their documentation to support the certification of eligible commodities, so producers should retain the information used to complete their application.

Those who use the online calculator tool will be able to print a pre-filled CFAP application, sign it, and submit it to your local FSA office either electronically or via hand delivery through an office drop box. Please contact your local office to determine the preferred delivery method for your local office. Team members at FSA county offices will be able to answer detailed questions and help producers apply quickly and efficiently through phone and online tools. Find contact information for your local office at farmers.gov/cfap.

Policy Clarifications

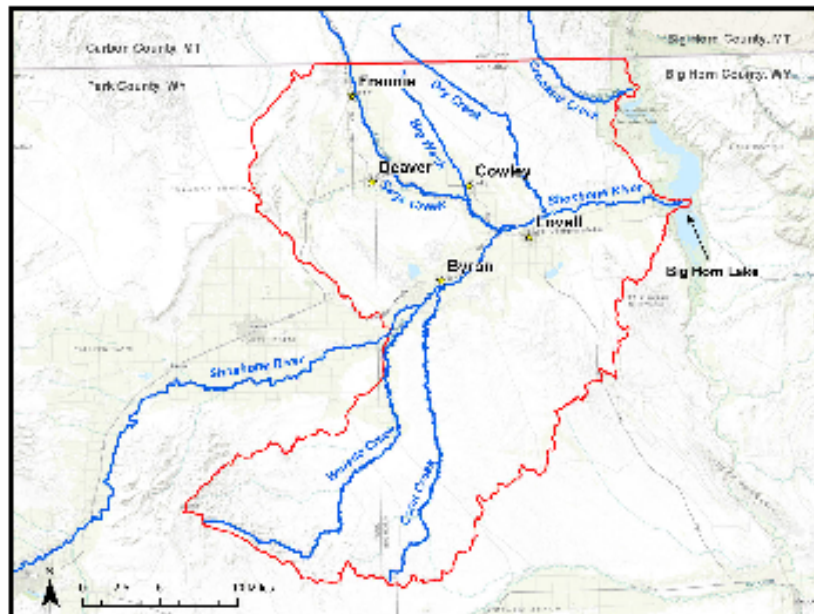
FSA has been working with stakeholder groups to provide further clarification to producers on the CFAP program. For example, the agency has published a matrix of common marketing contracts that impact eligibility for non-specialty crops and has provided a table that crosswalks common livestock terms to CFAP cattle categories. Updated information can be found in the frequently asked questions section of the CFAP website.

More Information

To find the latest information on CFAP, visit farmers.gov/CFAP or call 877-508-8364.

Legend

- ★ Towns
- Creeks and Rivers of Specific Interest
- Lower Shoshone Watershed Study Project Area



NOTICE – WATERSHED STUDY

The Wyoming Water Development Commission (WWDC) has contracted Biota Research and Consulting, Inc. to conduct the:

Level 1 Study for the Lower Shoshone Watershed

In coordination with the Shoshone Conservation District

Tributaries of specific interest to this study include the Lower Shoshone River, Whistle Creek, Coon Creek, Sage Creek, Big Wash, Dry Creek, and Crooked Creek.

What does this mean?

- You can receive design assistance with irrigation and agricultural projects, at no cost to you.
- You can have your desired projects identified for potential grant funding through the Small Water Project Program, at no cost to you.
- We would like to hear from you about the projects you would like to pursue.
- Potential project types include irrigation projects, diversion improvements, stream bank stabilization, upland water or solar platform projects, water use improvement projects, wetland/wildlife habitat projects.

Due to COVID we have not had a chance to hold a public outreach meeting or gathering. But we would like to hear from you about priority projects in the basin. We hope to identify and advance projects that benefit the watershed, agricultural operations, fish and wildlife, the landscape, and the people.

What can you do?

- Contact Kristin Tilley at the Shoshone Conservation District and identify projects of interest to you.
- Engineering staff from Biota will then contact you to learn more about your project.
- Conceptual designs, construction cost estimates, and grant opportunities will then be compiled for you.
- Please spread the word.
- There is no commitment—you decide if/when/how your particular projects might be advanced.

Timeline

- Contact Kristin Tilley with new project ideas by: Sept 15, 2020
- Project evaluation, and design advancement: Sept 2020 – June 2021
- Public Meetings and individual landowner meetings: Dates TBD
- Draft project reporting: June – Aug 2021
- Final project reporting: Sept – Oct 2021

Contact

Kristin Tilley
 Shoshone Conservation District
 Phone: (307) 548-7422 xt 101
 Email: Kristin.Tilley
 <shoshonecd@tctwest.net>

**USDA Farm Service Agency
Big Horn County FSA Office
408 Greybull Ave.
Greybull, WY 82426**

Communication is Key in Lending

Farm Service Agency (FSA) is committed to providing our farm loan borrowers the tools necessary to be successful. FSA staff will provide guidance and counsel from the loan application process through the borrower's graduation to commercial credit. While it is FSA's commitment to advise borrowers as they identify goals and evaluate progress, it is crucial for borrowers to communicate with their farm loan staff when changes occur. It is the borrower's responsibility to alert FSA to any of the following:

- Any proposed or significant changes in the farming operation
- Any significant changes to family income or expenses
- The development of problem situations
- Any losses or proposed significant changes in security

If a farm loan borrower can't make payments to suppliers, other creditors, or FSA on time, contact your farm loan staff immediately to discuss loan servicing options.

For more information on FSA farm loan programs, North Big Horn County producers contact the Park County USDA Service Center at 754-9411 Ext 2, and South Big Horn County producers contact the Washakie County USDA Service Center at 347-2456 Ext 2, or visit fsa.usda.gov

Persons with disabilities who require accommodations to attend or participate in this meeting should contact Brenda Miller at 307-765-2689 extension 2 or Federal Relay Service at 1-800-877-8339.

USDA is an equal opportunity provider, employer and lender. To file a complaint of discrimination, write: USDA, Office of the Assistant Secretary for Civil Rights, Office of Adjudication, 1400 Independence Ave., SW, Washington, DC 20250-9410 or call (866) 632-9992 (Toll-free Customer Service), (800) 877-8339 (Local or Federal relay), (866) 377-8642 (Relay voice users).