

August 2020



# NEWSLETTER



## Park County Farm Service Agency

1017 Highway 14A  
Powell, WY 82435

Phone: 307-754-9411  
Fax: 855-415-3438

Office Hours:  
8:00 a.m.—4:30 p.m.  
Monday—Friday

### County Executive Director:

Darla Rhodes

### Program Technicians:

Tanya Butz  
Marcia Shuler

### Farm Loan Officer:

Tom Schambow

### County Committee:

Emily Karst—Chair-person  
Lynn George—Vice-chairperson  
Tim Acord—Member

### Next Committee Meeting:

TBD

## County Office Message

### *From Darla's Desk...*

Greetings Park County Farmers and Ranchers!

As most of you know, our office is now open to in-person appointments, provided you do not feel ill, been exposed to COVID, or have any symptoms. Please call the office to make an appointment to complete any FSA business if you want to meet in person.

We have several deadlines that are quickly approaching. Annual crop reporting must be completed no later than August 14, 2020. This is a requirement to maintain eligibility for most FSA programs, including disaster programs. The CFAP program deadline is August 28, 2020. This program is if you sustained a loss due to COVID on your crops or livestock.

Wool LDP's can be applied for anytime you choose or when you lose beneficial interest in the wool. Wool LDP rates are currently at \$0.30/pound for ungraded wool. If you still retain ownership of your 2020 wool, please contact the office to determine eligibility for an LDP payment.

Park County is now experiencing drought conditions in some areas. Please keep in mind you must file a notice of loss within 15 days of when the loss is apparent. Those can be filed in person, email, or by phone.

Please call 307-754-9411 to schedule an appointment.

## Coronavirus Food Assistance Program (CFAP)

Agricultural producers can now apply for USDA's Coronavirus Food Assistance Program (CFAP), which provides direct payments to offset impacts from the coronavirus pandemic. The application and a payment calculator are now available online, and USDA's Farm Service Agency (FSA) staff members are available via phone, fax and online tools to help producers complete applications. The agency set up a call center in order to simplify how they serve new customers across the nation.

Applications will be accepted through September 11, 2020. Through CFAP, USDA is making available \$16 billion for vital financial assistance to producers of agricultural commodities who have suffered a five-percent-or-greater price decline due to COVID-19 and face additional significant marketing costs as a result of lower demand, surplus production, and disruptions to shipping patterns and the orderly marketing of commodities.

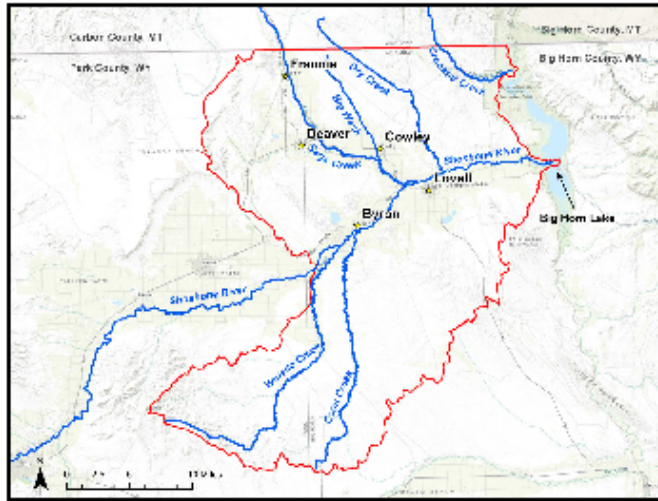
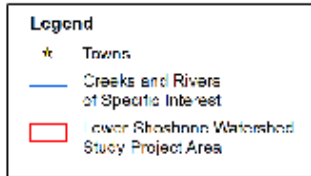
We also want to remind producers that the program is structured to ensure the availability of funding for all eligible producers who apply.

Producers can download the CFAP application and other eligibility forms from [farmers.gov/cfap](https://farmers.gov/cfap). Also, on that webpage, producers can find a payment calculator to help identify sales and inventory records needed to apply and calculate potential payments.

### More Information

To find the latest information on CFAP, visit [farmers.gov/cfap](https://farmers.gov/cfap) or call 307-754-9411.

Persons with disabilities who require accommodations to attend or participate in this meeting should contact Darla Rhodes at 307-754-9411, extension 2, or Federal Relay Service at 1-800-877-8339. USDA is an equal opportunity provider, employer, and lender.



## NOTICE – WATERSHED STUDY

The Wyoming Water Development Commission (WWDC) has contracted Biota Research and Consulting, Inc. to conduct the:

### Level 1 Study for the Lower Shoshone Watershed

In coordination with the Shoshone Conservation District

Tributaries of specific interest to this study include the Lower Shoshone River, Whistle Creek, Coon Creek, Sage Creek, Big Wash, Dry Creek, and Crooked Creek.

What does this mean?

- You can receive design assistance with irrigation and agricultural projects, at no cost to you.
- You can have your desired projects identified for potential grant funding through the Small Water Project Program, at no cost to you.
- We would like to hear from you about the projects you would like to pursue.
- Potential project types include irrigation projects, diversion improvements, stream bank stabilization, upland water or solar platform projects, water use improvement projects, wetland/wildlife habitat projects.

*Due to COVID we have not had a chance to hold a public outreach meeting or gathering. But we would like to hear from you about priority projects in the basin. We hope to identify and advance projects that benefit the watershed, agricultural operations, fish and wildlife, the landscape, and the people.*

What can you do?

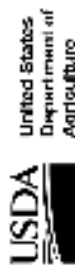
- Contact Kristin Tilley at the Shoshone Conservation District and identify projects of interest to you.
- Engineering staff from Biota will then contact you to learn more about your project.
- Conceptual designs, construction cost estimates, and grant opportunities will then be compiled for you.
- Please spread the word.
- There is no commitment—you decide if/when/how your particular projects might be advanced.

Timeline	Contact
<ul style="list-style-type: none"> <li>• Contact Kristin Tilley with new project ideas by: Sept 15, 2020</li> <li>• Project evaluation, and design advancement: Sept 2020 – June 2021</li> <li>• Public Meetings and individual landowner meetings: Dates TBD</li> <li>• Draft project reporting: June – Aug 2021</li> <li>• Final project reporting: Sept – Oct 2021</li> </ul>	<p>Kristin Tilley            Shoshone Conservation District            Phone: (307) 548-7422 xt 101            Email: Kristin Tilley            &lt;shoshonecd@tctwest.net&gt;</p>

## Update Your Records

FSA is cleaning up our producer record database. If you have any unreported changes of address, phone number, email address, bank account, entity name, or entity members, they need to be reported to our office. Changes in your farm land also need to be current for accurate acreage reporting and to remain eligible for many programs.

If you have any updates or corrections, please contact our office at 307-754-9411.



## Farm Service Agency

# 2020 Customer Calendar

[www.farmers.gov](http://www.farmers.gov)  
[www.fsa.usda.gov](http://www.fsa.usda.gov)  
[www.fsa.usda.gov/wy](http://www.fsa.usda.gov/wy)

### Farm Programs

- Agricultural Risk & Price Loss Coverage (ARC/PLC)
- Biomass Crop Assistance Program (BCAP)
- Commodity Marketing Assistance Loans (MAL)
- Conservation Reserve Program (CRP)
- Dairy Margin Coverage (DMC)
- Emergency Assistance for Livestock, Honeybees, and Farm-Raised Fish (ELAP)
- Emergency Conservation Program (ECP)
- Livestock Forage Disaster Program (LFP)
- Livestock Indemnity Program (LIP)
- Loan Deficiency Payments (LDP)
- Noninsured Crop Disaster Assistance Program (NAP)
- Wildfires and Hurricanes Indemnity Program (WHIP)

### Farm Loans—No Application Deadlines

- Beginning Farmer & Rancher Loans
- Emergency Loans (Time Sensitive)
- Farm Operating Loans (Direct and Guaranteed)
- Farm Ownership Loans (Direct and Guaranteed)
- Farm Storage Facility Loans (FSFL)
- EZ Guarantee and Microloans
- SDA (Women/Minority) Farmer & Rancher Loans
- Youth Loans
- **Various eligibility requirements are required for both Farm programs and Farm loans**

**Farm Program Deadlines** - (dates below are subject to change) *Contact your local office for more information or to make an appointment.*

**Coronavirus Food Assistance Program (CFAP): May 26—August 28**

#### Acres Reports:

- July 15 – Soybeans, corn, and other spring-planted feed grains, CRP, Hemp, and other crops
  - November 15 – Apiculture (bees), fall -seeded small grains
- CRP General Signup: December 9 through February 28  
Continuous CRP Signup: August 21

CRP Grasslands: March 16 to May 15

#### ARC/PLC:

- July 15 – Final date to report production for the preceding crop year
- June 30 – Election and enrollment end for crop year 2020
- October of each contract year after 2020 – Election and enrollment begin for the applicable year
- March 15 of each contract year after 2020 – Election and enrollment end for the applicable year

### Farm Service Agency – Wyoming State Office

951 Werner Court, Suite 130  
Casper, Wyoming 82601 PH: 307-261-5231

### Days USDA Offices Are Closed

- Jan. 1 - New Year's Day Holiday
- Jan. 20 - Martin Luther King, Jr. Day
- Feb. 17 - President's Birthday
- May 25 - Memorial Day
- July 4 - Independence Day
- Sept. 7 - Labor Day
- Oct. 12 - Columbus Day
- Nov. 11 - Veterans Day
- Nov. 26 - Thanksgiving Day
- Dec. 25 - Christmas Holiday

### Important Links

Farmers.gov - <https://www.farmers.gov/>  
FSA FencePost - <http://fsa.blog.usda.gov/delivery>  
USDA Blogs - <http://blogs.usda.gov/>

### Questions?

Contact your local FSA office.  
A directory of USDA Service Centers can be found online at [offices.usda.gov](https://offices.usda.gov)

### GovDelivery Email & SMS Text Updates

Contact your local FSA office ask how you can receive important FSA updates and reminders by email and SMS text subscriptions.

### Have you moved?

### Changed bank accounts?

Contact your local FSA to update your records.

### Stay Connected with USDA:



USDA is an equal opportunity provider, employer and lender.

**USDA Farm Service Agency  
Park County FSA Office  
1017 Highway 14A  
Powell, WY 82435**

[Document the Drought: USDA U.S. Drought Monitor Offers Producers a Voice to Report Drought Impacts](#)

*The U.S. Drought Monitor's reporting feature offers producers an opportunity to submit drought impact and condition reports.*

The USDA, in partnership with the National Oceanic and Atmospheric Administration and the University of Nebraska in Lincoln, produced the U.S. Drought Monitor to include a reporting feature that allows producers to report local drought impacts and conditions.

The report allows producers to:

- Provide a written description of drought impacts on livelihood, activities, etc.:
- Select categories to show losses and gains as a result of the drought:
- Report on the duration of drought event:
- Select *Affected Places* – geographic areas ranging from an entire state to a small area within a state:
- Submit images that document the drought and its impact:
- Provide contact information (includes an option to keep information confidential).

The reporting tool for producers to record the effects of the drought can be accessed at the following link: [droughtreporter.unl.edu/submitreport/](http://droughtreporter.unl.edu/submitreport/)

More information including state specific drought impact maps can be found on the U. S. Drought Monitor homepage: [droughtmonitor.unl.edu/Home.aspx](http://droughtmonitor.unl.edu/Home.aspx)

USDA is an equal opportunity provider, employer and lender. To file a complaint of discrimination, write: USDA, Office of the Assistant Secretary for Civil Rights, Office of Adjudication, 1400 Independence Ave., SW, Washington, DC 20250-9410 or call (866) 632-9992 (Toll-free Customer Service), (800) 877-8339 (Local or Federal relay), (866) 377-8642 (Relay voice users).