



A diver in a dark wetsuit and blue diving mask is underwater, with arms outstretched. The water is blue and filled with bubbles. The diver is wearing a scuba tank and regulator. The text 'WELCOME!' is overlaid in yellow on the diver's chest.

**WELCOME!**

**Production Services Branch  
John Stadelman**

# Production Summary

- Forest Service
  - Scan to Media Totals
    - 876
    - \$8680
  - Print only Totals
    - 18,623
    - \$79,362
- NRCS
  - Scan to Media Totals
    - 1940
    - \$24,722
  - Print only Totals
    - 822
    - \$12,661

# Production Services Branch (PSB)

- Structure

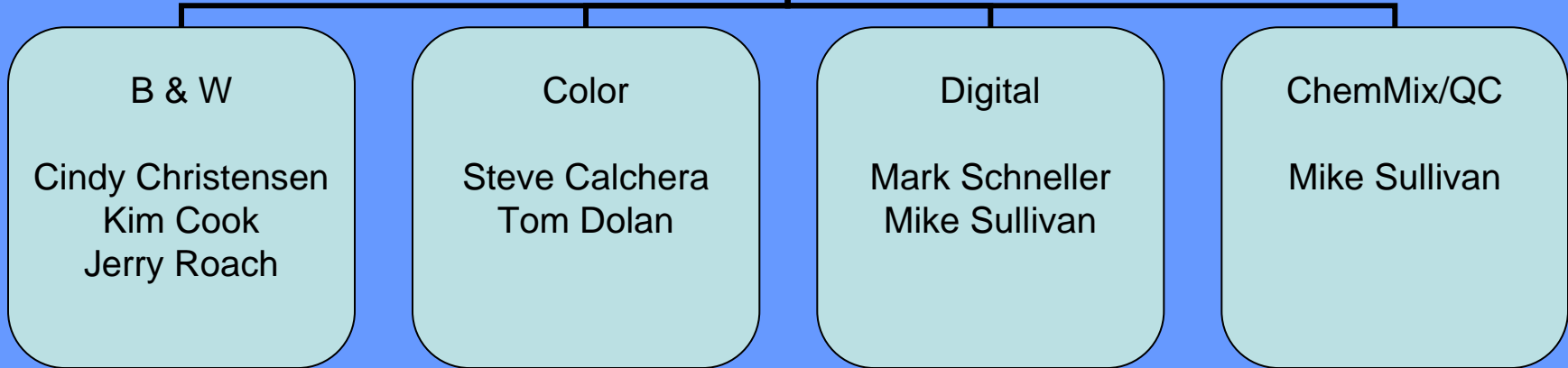
- Photography Section

- Scanning Section

- Technical Support

# Photography Section Employees

Section Supervisor  
James Daniel



# Photo Equipment

- Exposing
  - LogE - contacts
  - DeVere - enlargements
  - Durst Epsilon 30 - digital
  - Durst Theta 76 - digital
- Processing
  - Kreonite - B&W print
  - Kodak Versamat - film
  - Colex – color print/film
- Fininshing
  - Laminater



# Photo Services

- Traditional
- Digital
- Finishing



# Traditional Services

## B & W Products

- Film
  - Transparencies
  - Duplication
  - Inter-negative
- Contacts
  - 10" X 10"
  - 20" X 24"(Photo Index)
- Enlargements
  - 12" X 12"
  - 17" X 17"
  - 24" X 24"
  - 38" X 38"

# Traditional Services

## Color Products

- Film
  - Transparencies
- Contacts
  - 10" X 10"
- Enlargements
  - 20" X 20"
  - 20" X 24"
  - 24" X 24"
  - 38" X 38"



# Digital Services

- Color or B & W rendered
- Print sizes
  - 10” X 10”
  - 20” X 20”
  - 20” X 24”
  - 30” X 30”
  - 30” X 40”

# Digital Services

- Custom Digital Requests
  - Your AOI Your Specifications
  - Template
  - Attribute Layers
  - Order from APFO web site



# Scanning Section Employees

Branch Chief

```
graph TD; BC[Branch Chief] --- JB[Jon Boyden]; BC --- VW[Vikki Wynn];
```

Jon Boyden

Vikki Wynn

# Scanning Equipment

- Leica
  - DSW 500 (2)
- Werhli
  - RM6 (3)





# Scanning Services

- Film to electronic file (TIFF)
- 8 – 1600  $\mu$
- Internal support
  - digital printing
  - geospatial use
- External requests

# Scanning Services

- EROS project
  - 29,000 NHAP & NAPP images
- Utah project
  - Salt Lake County '58-'77
  - More to follow...



# Technical Support Employees

Branch Chief

```
graph TD; BC[Branch Chief] --- LD[Les Duchene]; BC --- RM[Rick Moore]
```

Les Duchene

Rick Moore

# Technical Support

- Services
  - Maintenance, repair and modification
  - Mechanical, electrical, plumbing, etc...

A photograph of two rainbows arching over a dark, choppy sea. The sky is filled with heavy, grey clouds, with a patch of lighter, blue-tinged clouds in the center where the rainbows appear to meet. The overall mood is dramatic and somewhat somber.

**QUESTIONS?**





