

UNITED STATES DEPARTMENT OF AGRICULTURE

Farm Service Agency
Washington, DC 20250

**Noninsured Crop Disaster Assistance
Program for 2001 and Subsequent Years
1-NAP (Revision 1)**

Amendment 65

Approved by: Deputy Administrator, Farm Programs



Amendment Transmittal

A Reasons for Amendment

Subparagraph 107 C has been amended to clarify that there can be no gaps in crop year data during the historical base period when calculating the county-expected yield.

Subparagraph 771 I has been added to define the record status codes in NCT.

Subparagraph 781 A has been amended to provide an updated Reports - Report Selection Screen.

Subparagraph 781 J has been added to provide instruction for retrieving the Single-County SURE Approved Records Report from NCT.

Page Control Chart		
TC	Text	Exhibit
5, 6	3-1 through 3-4 10-60.35, 10-60.36 10-60.36.5, 10-60.36.6 (add) 10-60.111, 10-60.112 10-60.127, 10-60.128 10-60.129 (add)	

Table of Contents (Continued)

	Page No.
Part 7	Notice of Loss
Section 1	CCC-576
401	Reporting Loss 7-1
402-424	(Reserved)
Section 2	Measurements and Appraisals
425	Overview 7-31
426	Performing Measurement Services 7-32
427	Performing Appraisals 7-33
428	(Withdrawn--Amend. 44)
429-501	(Reserved)
Part 8	General Payment Provisions
502	Application for Payment 8-1
503	Amount of Assistance 8-3
504	Reductions 8-5
505	Other Benefits 8-5
506	Determining Shares 8-5
507	Determination Appeals 8-6
508-599	(Reserved)
Part 9	Compliance Reviews
600	NAP Compliance Reviews 9-1
601-750	(Reserved)
Part 10	County Office Software Operations
Section 1	National Crop Table, 2008 and Prior Crop Years
751	Overview 10-1
751.5	NCT Pay Groupings 10-5
752	Rollover Process 10-6
753	National Crop Table Process 10-9
754	Units of Measure in the National Crop Table..... 10-12
755	County Office National Crop Table Process 10-22
756	State Office National Crop Table Process 10-32
756.5	National Office Crop Table Process 10-52
757	National Crop Table Information 10-55
758	Approval Flags 10-60.8
759	National Crop Table Reports 10-60.9
760-770	(Reserved)

Table of Contents (Continued)

Part 10	County Office Software Operations (Continued)	Page No.
Section 1.5 National Crop Table, 2009 and Subsequent Crop Years		
771	Overview.....	10-60.31
772	NCT Pay Groupings.....	10-60.36.5
773	Rollover Process	10-60-37
774	NCT Process	10-60.39
775	Units of Measure in NCT.....	10-60.41
776	County Office NCT Process	10-60.42
777	State Office NCT Process	10-60.55
778	National Office NCT Process	10-60.87
779	NCT Information	10-60.95
780	Approval Flags.....	10-60.110.6
781	NCT Reports	10-60.111
782-795	(Reserved)	
Section 2 Unit Maintenance		
796	Overview	10-61
797	Basic Unit Definition	10-62
798	Creating Initial Units.....	10-63
799	Unit Maintenance	10-64
800	Modifying Units	10-66
801	Creating Units	10-67
802	Unit Description Report	10-68
803-835	(Reserved)	
Section 3 Approved Yields		
836	Overview	10-101
837	Approved Yield Screen Flow	10-102
838	Approved Yield Report Screen Flow	10-114
839	Required Approved Yield Changes	10-115
840	Approved Yield Rollover.....	10-117
841-880	(Reserved)	

Part 3 Crop Data Information

106 Crop Documentation

A Crop Data

County Offices shall provide crop data information identified in CCC-456 in Exhibit 17 to STC for each crop.

*--For each crop year and commercial crop or agricultural commodity for which a report of acreage may be filed in the State, STC shall establish, at least 120 calendar days before the specific crop's application closing date, the following:

- average market price
- county-expected yield
- applicable payment factors.

Notes: For secondary use, follow subparagraph 174 C.--*

Provide both price and yield of seed on the "clean" basis.

107 Expected Yield

A Definition of County-Expected Yield

[7 CFR 1437.102] The county-expected yield is the eligible crop yield for the administrative county established by STC * * *.

The county-expected yield should reflect the average production potential of the crop in the county by practice and intended use.

107 Expected Yield (Continued)**B Sources of Yield Information**

The county-expected yield shall be based on the best available information provided by any of the following sources:

- NASS
- NIFA
- Rural Development
- County Agricultural Commissioner's Office
- local markets
- COC's knowledge
- yields in similar areas
- average APH by year
- other reliable sources, such as universities.

STC's shall:

- ensure that established county expected yields are comparable with previously approved county expected yields in the State or in surrounding States
- justify deviations from previously approved crop data.

Note: If NASS has data for the eligible crop, STC's must consider NASS information when establishing the crop data; however, STC's are not required to base the establishment only on NASS data.

C Establishing County-Expected Yield

If CAT insurance is not available for the crop in the administrative county or a contiguous county, the county-expected yield shall be calculated by using the Olympic average:

- obtaining the yields of the crop for the 5 consecutive crop years immediately preceding the previous crop year
- dropping the crop years with the highest and lowest yields
- averaging the yields for the remaining 3 crop years.

***--Example:** For the 2011 crop year, the historical base period is 2005 through 2009.--*

107 Expected Yield (Continued)

C Establishing County-Expected Yield (Continued)

If 5 crop years of data is not available for establishing the county-expected yield, STC shall:

- *--use the best sources of information available to obtain data for as many consecutive crop years as possible within the 5 crop years immediately preceding the previous crop year, starting with the most recent historical base year (2009 in the previous example)
- establish a county-expected yield for those crops by computing a simple average of the data obtained
- leave no gaps in years following the first crop year for which a historic yield is available within the base period.

The following examples are pertinent to establishing a 2011 county-expected yield with crop years 2005 through 2009 as the historical base period.

Example 1: NASS or other readily obtainable data is available for years 2005 and 2006 and not available for 2007 through 2009. STC **must** use best available information to fill in data for missing years 2007 through 2009. The Olympic average of years 2005 through 2009 will be used in this example.

Example 2: NASS or other readily obtainable data is available for years 2007 and 2008 but not 2009. STC **must** use best available information to fill in data for missing year 2009. The simple average of years 2007 through 2009 will be used in this example.

Example 3: NASS or other readily obtainable data is available for years 2006, 2007, and 2009. STC **must** use best available information to fill in data for missing year 2008. The simple average of years 2006 through 2009 will be used in this example.

Example 4: NASS or other readily obtainable data is available for years 2008 and 2009. STC does **not** need to obtain additional years' data. The county-expected yield will be the simple average of years 2008 and 2009 because there are no gaps in years starting with the crop year immediately preceding the previous year.--*

107 Expected Yield (Continued)**C Establishing County-Expected Yield (Continued)**

[7 CFR 1437.7 (a)] For planted annual crops, the county-expected yield must be based on the acreage planted for harvest. If yield information used by STC is for harvested acres only, STC shall convert the harvested acre yield to a planted acre yield.

Notes: County-expected yields for orchards shall be based on mature orchards, if the majority of this orchard crop acreage is mature. T-yield reductions shall be applied for individual producers having less than mature orchards.

The T-yield established for the administrative county will be the T-yield for the unit as defined in paragraph 28.

Example: Unit acreage is located in both County A and County B. County A is the administrative county. The T-yield established for County A will be the T-yield for the unit.

If CAT insurance is available for the crop in:

- the administrative county, STC shall establish the county CAT T-yield as the expected yield
- a contiguous county, STC shall ensure that the established county-expected yield is comparable to CAT T-yield in the county.

Note: If there is more than 1 contiguous county, average the T-yields for all contiguous counties.

Exception: CAT T-yields are not required to be used if STC establishes a different county-expected yield for different types or varieties of a crop where CAT makes no such distinction based on type or variety.

STC shall identify and document how the established county-expected yield was determined.

D County-Expected Yields for Different Farming Practices

The county-expected yield may take into consideration different yield variations because of diverse farming practices. Although NASS does not always establish separate yields based on practice, STC's shall establish irrigated and nonirrigated county-expected yields, if appropriate.

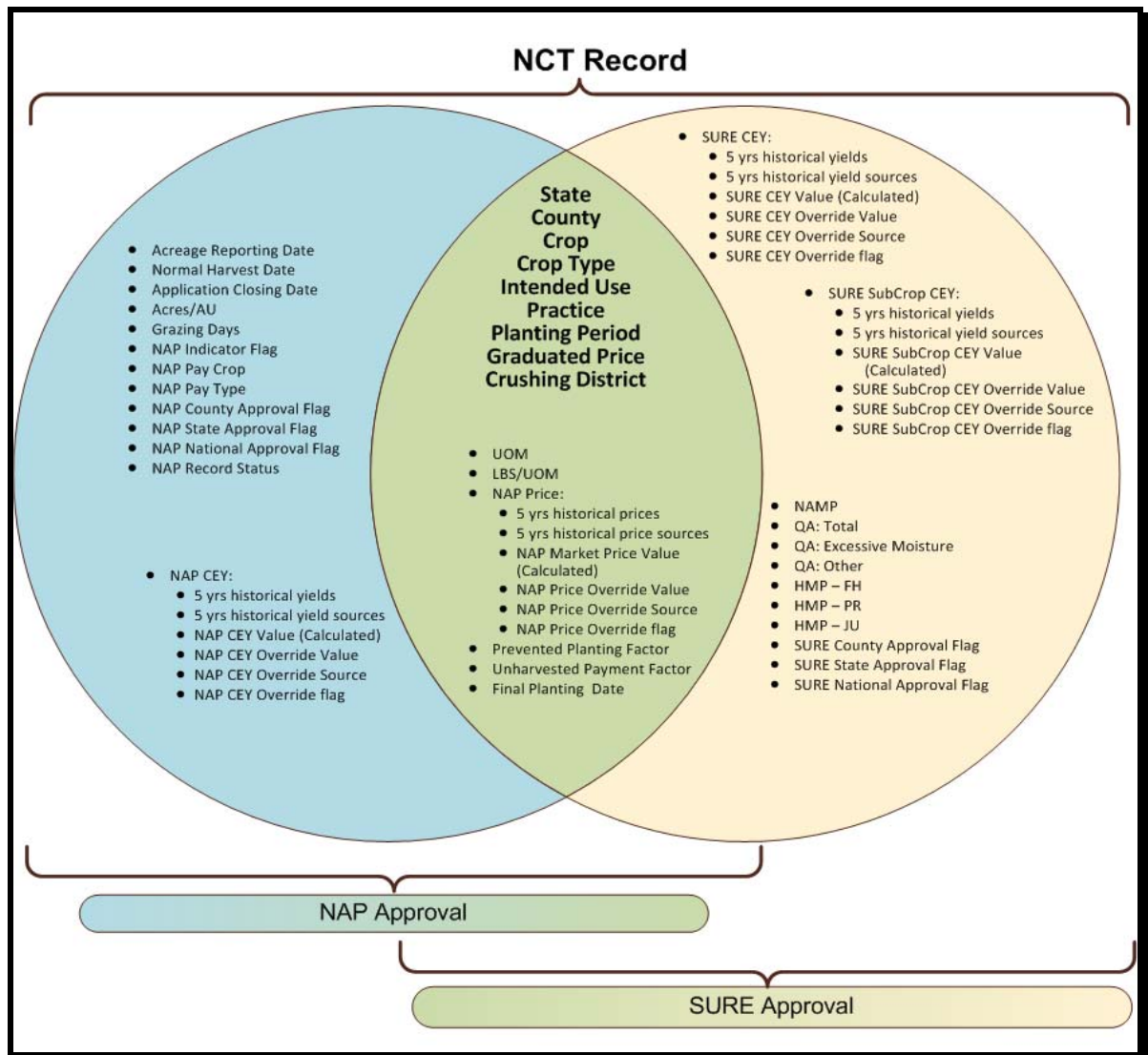
If a crop, using good farming practices, is being produced using more than 1 farming practice, STC shall establish approval of a county-expected yield based on each farming practice.

771 Overview (Continued)

***--F Crop Data Common to Two Programs**

The “Common Data” elements are used and subject to approval by both programs, NAP and SURE. After the approval flag is set for 1 program, these data elements may not be modified for the other program unless an approval flag reset is performed. The “Common Data” elements include:

- Unit of Measure
- Pounds per Unit of Measure
- NAP Price (including Historical, Calculated and/or Override Prices and Sources)
- Prevented Planting Factor
- Unharvested Payment Factor
- Final Planting Date.



--*

771 Overview (Continued)

G Multiple Approval Flags

For each program, NCT will capture an approval flag at 3 different levels, based on the approving user’s eAuthentication role:

- county
- State
- National.

The County Office user is only permitted to modify yields, so the “County Approval” flags will only lock the yield data for whichever program the flag is set, NAP or SURE. State Offices are encouraged to use their County Offices to load and approve county yield data. The County Offices are more familiar with their regional yields, and allowing them to enter this data will free up time for the State Office to load all of the other crop data.

The “County Approval” flag will serve as an indicator to the State Office that the county has successfully loaded and approved the yields for their county. The State Office has the authority to modify these yields, if necessary.

Approval Flag	Approves	Set By	May Only Be Reset By
NAP County Approval	NAP Yields	County Office	State Office
NAP State Approval	All NAP Data Elements (NAP-Only and Common Data)	State Office	National Office
NAP National Approval	All NAP Data Elements (NAP-Only and Common Data)	National Office	National Office
SURE County Approval	SURE Yields	County Office	State Office
SURE State Approval	All SURE Data Elements (SURE-Only and Common Data)	State Office	National Office
SURE National Approval	All SURE Data Elements (SURE-Only and Common Data)	National Office	National Office

H Mandatory Crop Data Load

For 2010 and subsequent years, State Offices are required to load crop data for NAP and SURE into NCT, as it is essential for application and payment software and calculation workbooks. The data collection will greatly reduce County Office input/load time and decrease typographical errors from manual data loads into several systems.

771 Overview (Continued)

*--I Status Codes

Each NCT record contains a status code, which defines the status of the data within the record.

Status Code	Description	Action Required
R	Record has rolled from previous year, without any additional crop data entries for current year. See subparagraph 773 C.	Enter current year crop data for NAP and SURE, as applicable.
S	Record contains the required crop data to be considered a NAP shell record, and transmit to the county System 36. See subparagraph 777 C.	Additional NAP data is required before setting the State approval flag for NAP in NCT.
U	Record contains crop data required for the SURE Program, without crop data required for NAP.	No action is necessary, if the crop is not covered by NAP in the county.
{blank}	Active record contains NAP or NAP+SURE crop data.	If record is complete and accurate, the State Office may set NAP and/or SURE approval flags.
I	Record is inactive and was dropped because of inactivity for 3 consecutive years. Although visible within NCT, the record will not transmit to the county System 36 Crop Table.	No action is required.
D	Record has been deleted. Although visible within NCT, the record will not transmit to the county System 36 Crop Table.	No action is required.

--*

772 NCT Pay Groupings

A Background

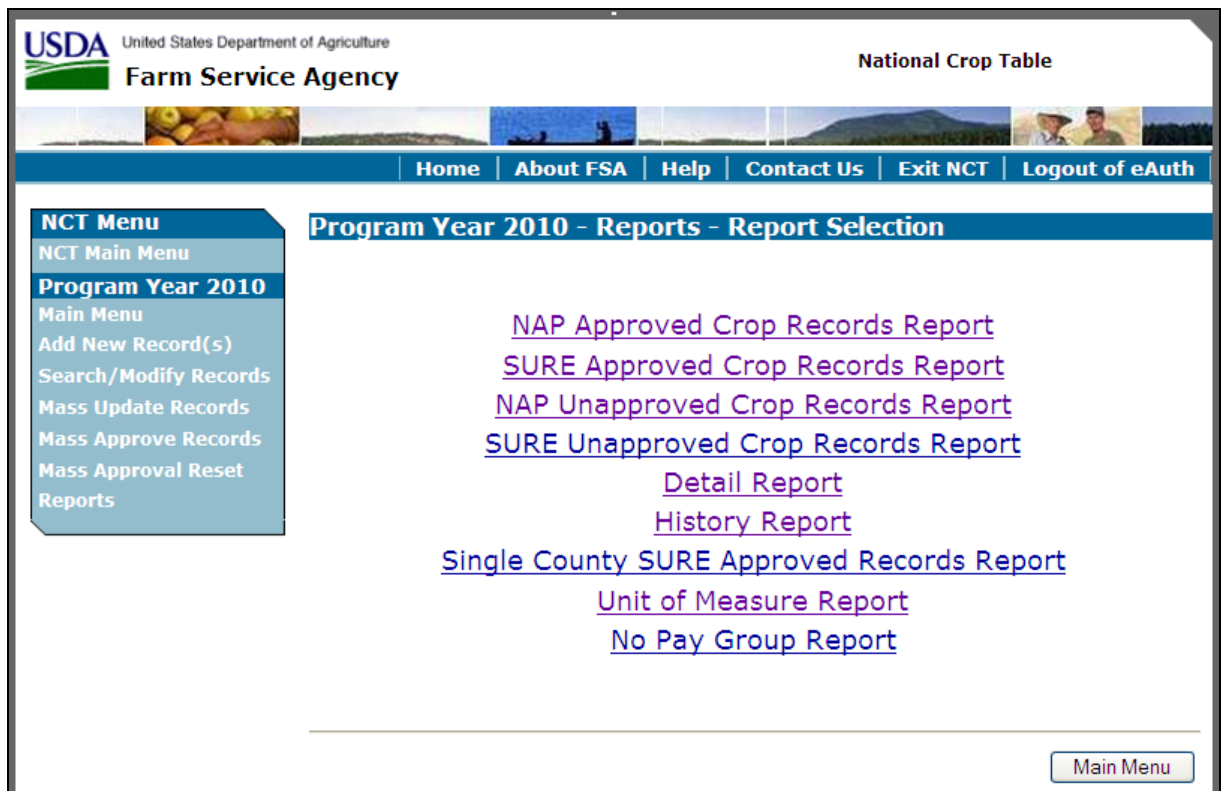
Each year the National Office updates a NAP pay grouping file to include approved NAP crop definition changes. The pay grouping file is used to validate whether crops added to NCT are approved for NAP. Crops added to NCT that do **not** match the NAP pay grouping file **cannot** be flagged “Y” for approval and will **not** be downloaded to the County Office.

781 NCT Reports

A Report Options

Users can print reports of crop data previously entered. From the Main Menu, CLICK “**Reports**”. The Reports - Report Selection Screen will be displayed. The reports can be printed for a specific record (crop, type, practice, intended use, planting period, etc.) or numerous records, depending on the selections entered on the query screen.

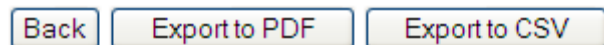
*--**Important:** There are 9 different reports the user can generate. All reports are accessible from the “Reports” section of the Main Menu.



--*

After a report is created, the report will be displayed on the screen and the user is given the following options:

- view on-screen (not recommended for printing)
- **Back** – return to search query
- **Export to PDF**
- **Export to CSV.**



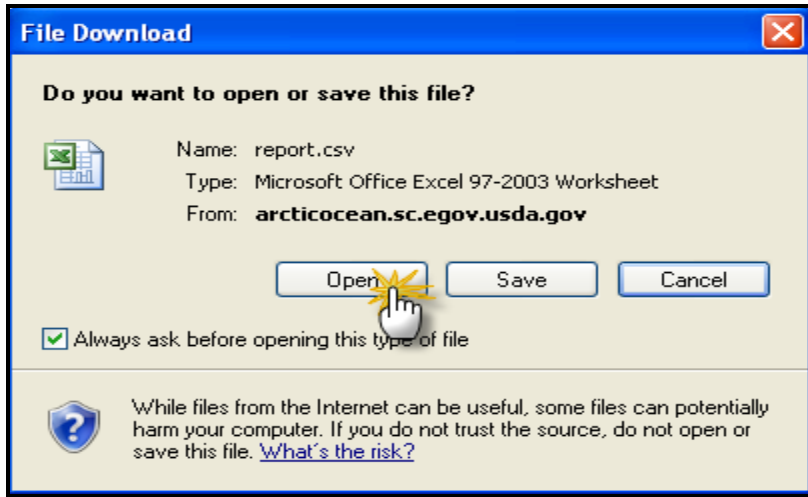
If the user clicks “**Export to PDF**”, the report will have the same appearance as the screen view, however, the user will be able to zoom in and out and print the report.

If the user clicks “**Export to CSV**”, the report will be exported into a comma separated values file, which can be opened and manipulated in Microsoft Excel. This option gives the user the most flexibility with the data and is strongly encouraged.

781 NCT Reports (Continued)

A Report Options (Continued)

*--When selecting “Export to CSV”, CLICK “Open” on the File Download dialog box.



The report will open in Microsoft Excel.

State	County	Crop Name	Crop Code	Crop Type	Intended Use	Graduated Price Code	Crushing District	Practice	Planting Period	Insurable	Unit of Measure	Yield	Price	Prevented Planting Factor	Unharvested Factor	Anim Acres
1	2010 National Crop Table															
2	Detail Report															
3																
4	New York	Cayuga	PEACHES	34 CLI	FH			N	1 N	BU	148	16	0	0.74		
5	New York	Cayuga	PEACHES	34 FRE	FH			N	1 N	BU	148	16	0	0.74		
6	New York	Cayuga	PEACHES	34 SCE	FH			N	1 N	BU	148	16	0	0.74		
7	New York	Cayuga	PEACHES	34 SCL	FH			N	1 N	BU	148	16	0	0.74		
8	New York	Cayuga	PEACHES	34 SCP	FH			N	1 N	BU	148	16	0	0.74		
9	New York	Cayuga	PEACHES	34 SCX	FH			N	1 N	BU	148	16	0	0.74		
10	New York	Chautauqua	PEACHES	34 FRE	FH			N	1 N	BU	148	16	0	0.74		
11	New York	Columbia	PEACHES	34 CLI	FH			N	1 Y	BU	148	16	0	0.74		
12	New York	Columbia	PEACHES	34 FRE	FH			N	1 Y	BU	148	16	0	0.74		
13	New York	Dutchess	PEACHES	34 CLI	FH			N	1 Y	BU	148	16	0	0.74		
14	New York	Greene	PEACHES	34 CLI	FH			N	1 N	BU	148	16	0	0.74		
15	New York	Greene	PEACHES	34 FRE	FH			N	1 N	BU	148	16	0	0.74		
16	New York	Monroe	PEACHES	34 CLI	FH			N	1 N	BU	148	16	0	0.74		
17	New York	Monroe	PEACHES	34 FRE	FH			N	1 N	BU	148	16	0	0.74		
18	New York	Ontario	PEACHES	34 CLI	FH			N	1 N	BU	148	16	0	0.74		
19	New York	Ontario	PEACHES	34 FRE	FH			N	1 N	BU	148	16	0	0.74		
20	New York	Ontario	PEACHES	34 SCE	FH			N	1 N	BU	148	16	0	0.74		
21	New York	Ontario	PEACHES	34 SCL	FH			N	1 N	BU	148	16	0	0.74		
22	New York	Ontario	PEACHES	34 SCL	FH			N	1 N	BU	148	16	0	0.74		

--*

781 NCT Reports (Continued)

*--I SURE Unapproved Records Report (Continued)

After users CLICK “Search”, the Reports - State Selection Screen will be displayed. Only States that contain data requested in the query will be displayed. Users may select up to 5 States in which to view unapproved records. CLICK “Process Selections” to obtain the report.

NCT Menu NCT Main Menu Program Year 2010 Main Menu Add New Record(s) Search/Modify Records Mass Update Records Mass Approve Records Mass Approval Reset Reports	Program Year 2010 - Reports - State Selection																											
	Select up to five (5) states to display. Record total must be no more than 7,000.																											
	<table border="1" style="width: 100%; border-collapse: collapse;"> <thead> <tr style="background-color: #d9ead3;"> <th style="width: 10%;">Select</th> <th style="width: 60%;">State</th> <th style="width: 30%;"># of Results</th> </tr> </thead> <tbody> <tr> <td style="text-align: center;"><input type="checkbox"/></td> <td>Alabama</td> <td style="text-align: center;">208</td> </tr> <tr> <td style="text-align: center;"><input checked="" type="checkbox"/></td> <td>Arizona</td> <td style="text-align: center;">4</td> </tr> <tr> <td style="text-align: center;"><input type="checkbox"/></td> <td>Arkansas</td> <td style="text-align: center;">78</td> </tr> <tr> <td style="text-align: center;"><input type="checkbox"/></td> <td>California</td> <td style="text-align: center;">44</td> </tr> <tr> <td style="text-align: center;"><input type="checkbox"/></td> <td>Colorado</td> <td style="text-align: center;">15</td> </tr> <tr> <td style="text-align: center;"><input type="checkbox"/></td> <td>Connecticut</td> <td style="text-align: center;">8</td> </tr> <tr> <td style="text-align: center;"><input checked="" type="checkbox"/></td> <td>Florida</td> <td style="text-align: center;">8</td> </tr> <tr> <td style="text-align: center;"><input type="checkbox"/></td> <td>Georgia</td> <td style="text-align: center;">331</td> </tr> </tbody> </table>	Select	State	# of Results	<input type="checkbox"/>	Alabama	208	<input checked="" type="checkbox"/>	Arizona	4	<input type="checkbox"/>	Arkansas	78	<input type="checkbox"/>	California	44	<input type="checkbox"/>	Colorado	15	<input type="checkbox"/>	Connecticut	8	<input checked="" type="checkbox"/>	Florida	8	<input type="checkbox"/>	Georgia	331
Select	State	# of Results																										
<input type="checkbox"/>	Alabama	208																										
<input checked="" type="checkbox"/>	Arizona	4																										
<input type="checkbox"/>	Arkansas	78																										
<input type="checkbox"/>	California	44																										
<input type="checkbox"/>	Colorado	15																										
<input type="checkbox"/>	Connecticut	8																										
<input checked="" type="checkbox"/>	Florida	8																										
<input type="checkbox"/>	Georgia	331																										

--*

781 NCT Reports (Continued)

I SURE Unapproved Records Report (Continued)

After users CLICK “Process Selections”, the SURE Unapproved Records Report will be displayed.

<input type="button" value="Back"/> <input type="button" value="Export to PDF"/> <input type="button" value="Export to CSV"/>																				
2010 National Crop Table SURE Unapproved Crop Records Report SURE Unapproval Level: State																				
Arizona																				
CARROTS (0120)																				
County	Crop Type	Intended Use	Graduated Price	Practice	Planting Period	Final Planting Date	Insurable	Unit of Measure	NAP Market Price	SURE CEY	SURE SubCrop CEY	Prevented Planting Factor	Unharvested Payment Factor	NAMP	QA-Total	QA-EM	QA-Other	HUP-FH	HUP-FR	HUP-JU
Greenlee	HYB	FH		I	01	03/31/2010	N	CWT	20.2333	27.75	17.00	0.9800	0.5300	21.8500	1.0000	1.0000	1.0000			
Maricopa	MNE	FH		I	01	03/31/2010	N	CWT	20.2333			0.9800	0.5300							
Pinal	MNE	FH		I	01	03/31/2010	N	CWT	20.2333			0.9800	0.5300							
Yavapai	HYB	FH		I	01	03/31/2010	N	CWT	20.2333	27.75	17.00	0.9800	0.5300	21.8500	1.0000	1.0000	1.0000			
Florida																				
CARROTS (0120)																				
County	Crop Type	Intended Use	Graduated Price	Practice	Planting Period	Final Planting Date	Insurable	Unit of Measure	NAP Market Price	SURE CEY	SURE SubCrop CEY	Prevented Planting Factor	Unharvested Payment Factor	NAMP	QA-Total	QA-EM	QA-Other	HUP-FH	HUP-FR	HUP-JU
Alachua	HYB	FH		I	01	11/30/2009	N	CWT	21.2333	30.67	19.00	0.1000	0.3000	19.5400	0.9800	1.0000	1.0000			
Alachua	HYB	FH		I	02	03/31/2010	N	CWT	21.2333			0.1000	0.3000	19.5400	0.9800	1.0000	1.0000			
Hamilton	HYB	FH		I	01	11/30/2009	N	CWT	21.2333	30.67	19.00	0.1000	0.3000	19.5400	0.9800	1.0000	1.0000			
Hamilton	HYB	FH		I	02	03/31/2010	N	CWT	21.2333			0.1000	0.3000	19.5400	0.9800	1.0000	1.0000			
Hamando	HYB	FH		I	01	11/30/2009	N	CWT	21.2333	30.67	19.00	0.1000	0.3000	19.5400	0.9800	1.0000	1.0000			
Hamando	HYB	FH		I	02	03/31/2010	N	CWT	21.2333			0.1000	0.3000	19.5400	0.9800	1.0000	1.0000			

See subparagraph A for report viewing and exporting options.

*--J Single County SURE Approved Records Report

The Single County SURE Approved Records Report:

- allows users to access crop records that are approved at the State level for the SURE Program
- is designed specifically for County Office users to assist in data-loading the SURE Workbook with State-approved SURE crop data.

Note: County Office users shall export and print this report as a .pdf file to use while data-loading SURE Workbooks in their County Offices.

To access the Single County SURE Approved Records Report from the:

- Main Menu, CLICK “**Reports**”
- Reports - Report Selection Screen, CLICK “**Single County SURE Approved Records Report**”.

Note: The Reports - Report Criteria Screen will be displayed.--*

781 NCT Reports (Continued)

*--J Single County SURE Approved Records Report (Continued)

The user must enter the desired State and county on the Reports - Report Criteria Screen before clicking “Search”.

After users CLICK “Search”, the Single County SURE Approved Records Report will be displayed.

Back Export to PDF Export to CSV

2010 National Crop Table
Single County SURE Approved Records Report
SURE Approved Level: State

Caroline, Maryland (24-011)

ASPARAGUS (0104)

Crop Type	Int Use	Prac.	Grad Pt Code	PP Factor	UH Factor	Pit. Per	Final Pit. Date	Insur-able	Unit of Meas	SURE CEY	SURE SubCrip CEY	HMP: FH	HMP: PR	HMP: JU	NAP Price	NAMP	QA: Total	QA: EM	QA: Other
FH	I			0.0000	0.6000	01		N	CWT	33.00					84.4333	84.4333	1.0000	1.0000	1.0000

BEANS (0047)

Crop Type	Int Use	Prac.	Grad Pt Code	PP Factor	UH Factor	Pit. Per	Final Pit. Date	Insur-able	Unit of Meas	SURE CEY	SURE SubCrip CEY	HMP: FH	HMP: PR	HMP: JU	NAP Price	NAMP	QA: Total	QA: EM	QA: Other
BSL	FH	I		0.1500	0.5100	01	06/01/2010	N	TON	1.35					426.3333	426.3333	1.0000	1.0000	1.0000
BUT	FH	I		0.1500	0.5100	01	06/30/2010	N	CWT	22.00					80.0000	80.0000	1.0000	1.0000	1.0000
GRN	FH	I		0.3000	0.7500	01	06/30/2010	N	CWT	40.67					43.6667	43.6667	1.0000	1.0000	1.0000
GRN	FH	N		0.3000	0.7500	01	06/30/2010	N	CWT	36.67					43.6667	43.6667	1.0000	1.0000	1.0000
LGL	FH	I		0.1500	0.5100	01	06/30/2010	N	CWT	22.00					80.0000	80.0000	1.0000	1.0000	1.0000
PLE	FH	I		0.3000	0.7500	01	06/30/2010	N	CWT	40.67					40.0000	40.0000	1.0000	1.0000	1.0000

CANTALOUPE (0759)

Crop Type	Int Use	Prac.	Grad Pt Code	PP Factor	UH Factor	Pit. Per	Final Pit. Date	Insur-able	Unit of Meas	SURE CEY	SURE SubCrip CEY	HMP: FH	HMP: PR	HMP: JU	NAP Price	NAMP	QA: Total	QA: EM	QA: Other
FH	I			0.1500	0.5200	01	06/15/2010	N	CWT	99.33					31.0000	31.0000	1.0000	1.0000	1.0000
FH	N			0.1500	0.5200	01	06/15/2010	N	CWT	90.00					31.0000	31.0000	1.0000	1.0000	1.0000

CARROTS (0120)

Crop Type	Int Use	Prac.	Grad Pt Code	PP Factor	UH Factor	Pit. Per	Final Pit. Date	Insur-able	Unit of Meas	SURE CEY	SURE SubCrip CEY	HMP: FH	HMP: PR	HMP: JU	NAP Price	NAMP	QA: Total	QA: EM	QA: Other
FH	I			0.2000	0.6000	01	06/30/2010	N	LBS	31733.00					0.2237	0.2237	1.0000	1.0000	1.0000

Note: See subparagraph A for report viewing and exporting options.--*

782-795 (Reserved)

