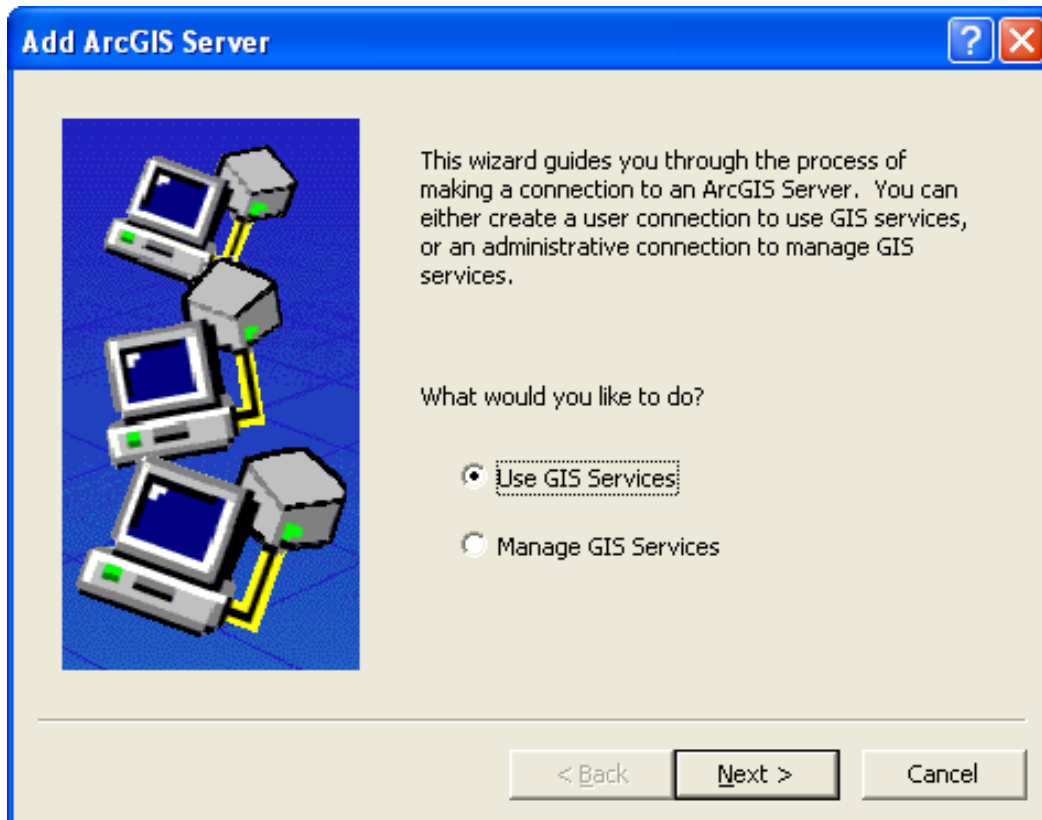


Adding GDW Data from the Public ArcGIS Server into ArcMap 9.3

Note: This service is available only for ArcGIS version 9.3 and above.

- 1) Open ArcMap and Click the *Add Data* button.
- 2) Select *GIS Servers* and then *Add ArcGIS Server*.
- 3) Click the *Use GIS Services* radio button, then click *Next*.

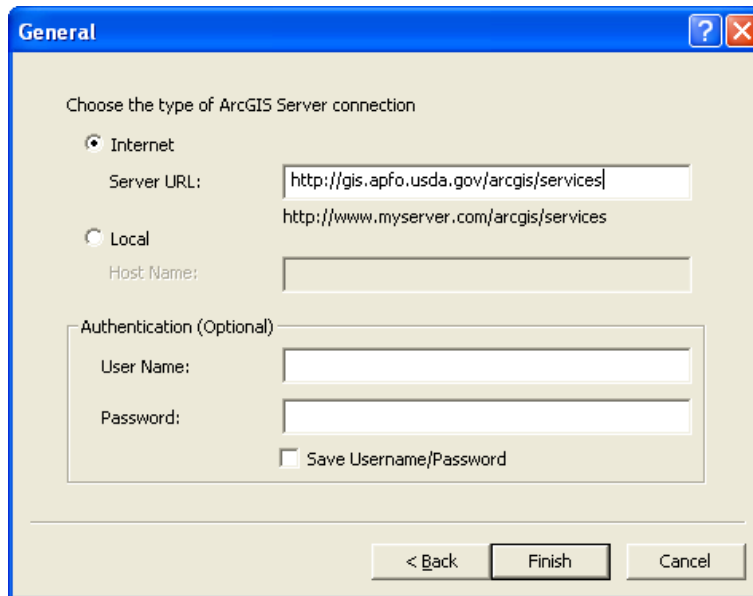


4) A *General* Dialog will open.

4a) Click the Internet Server radio button.

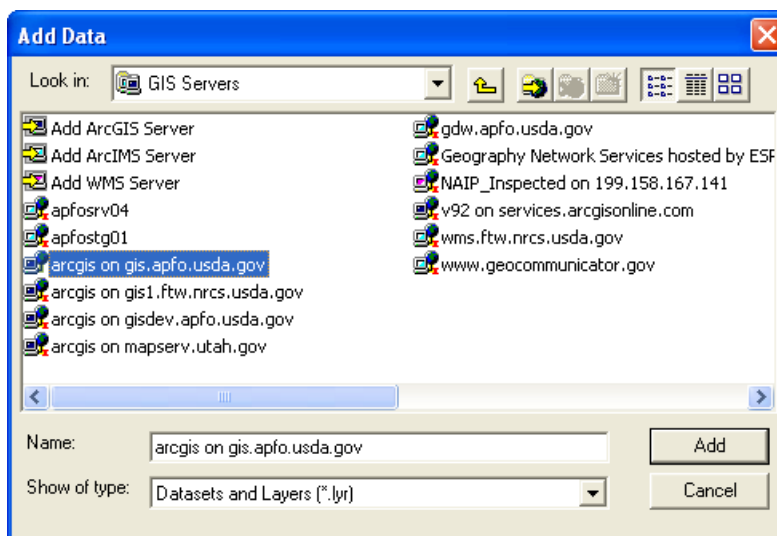
4b) In the Server URL: text box enter *http://gis.apfo.usda.gov/arcgis/services*.

4c) Click *Finish*.



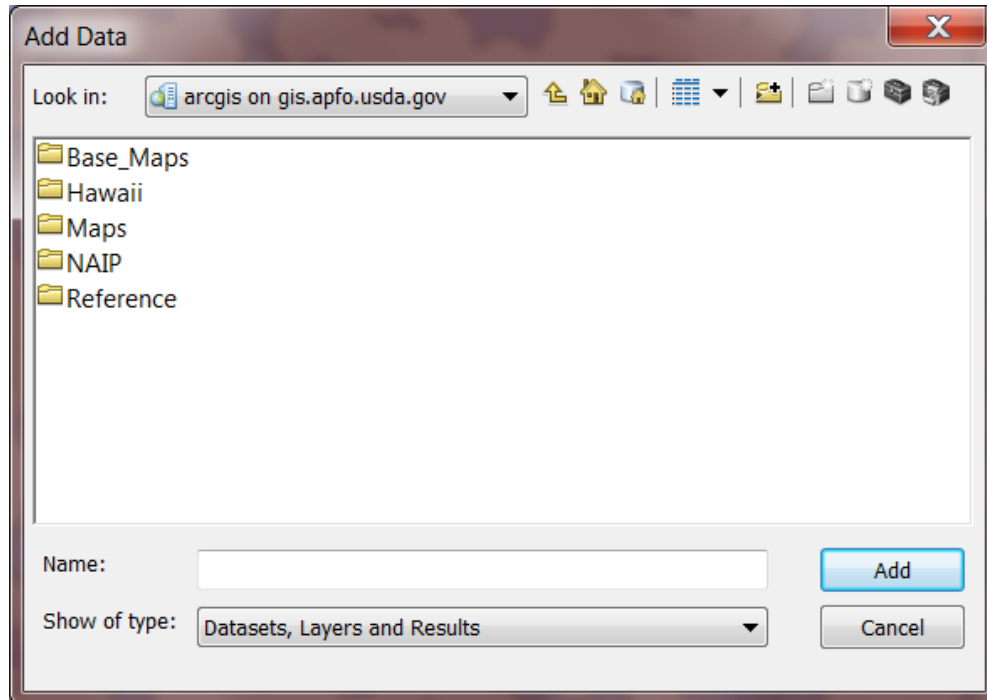
5) A new server, called: *arcgis on gis.apfo.usda.gov*, has been added to the GIS Servers list. Double Click the new rcGIS Server connection to access the server.

This is the public imagery server for NAIP imagery, and the data is organized by state. The server also has several map layers, displaying information such as state and county boundaries, water bodies, cities, highways, UTM zone lines, and NAIP acquisition and inspection status maps.

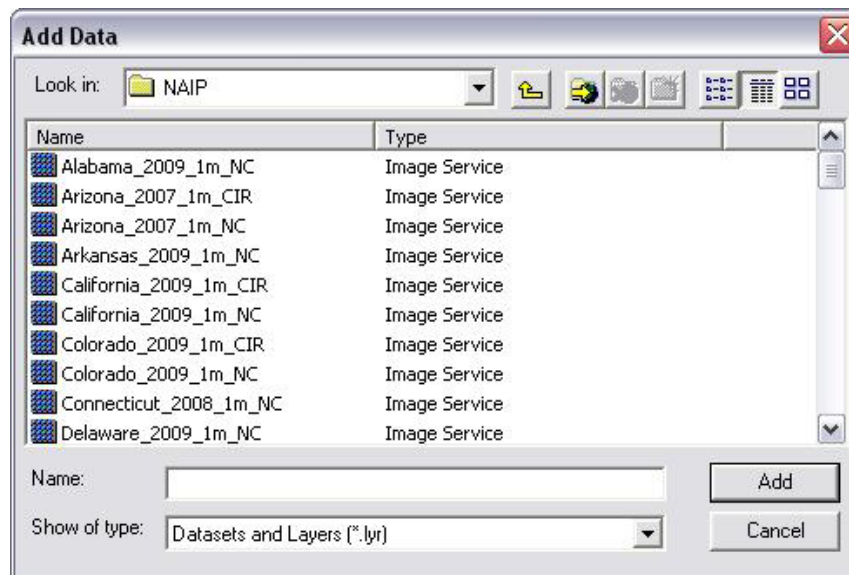


6) Double Click the NAIP folder to see the state based imagery services.

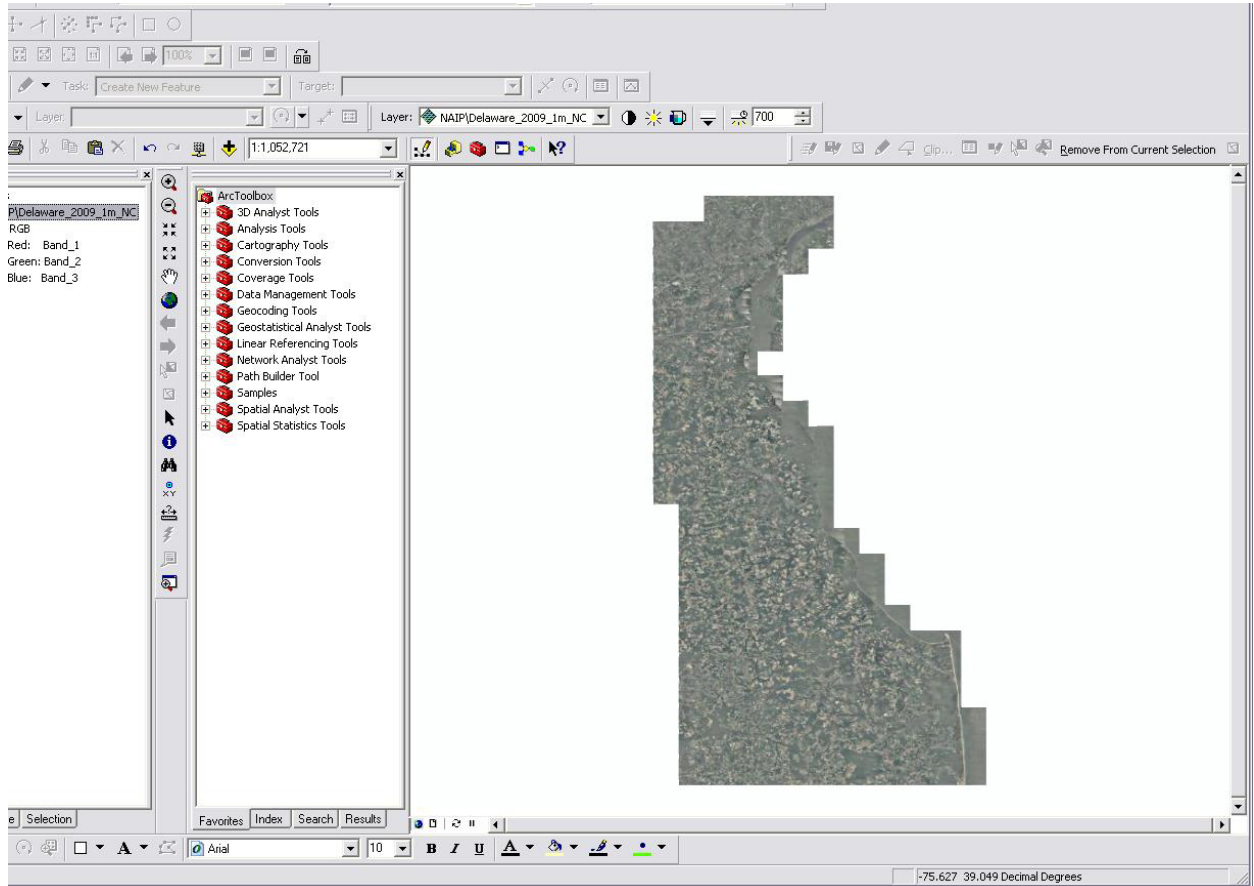
A list of state based image services in natural color format for the most current flying year will be presented.



7) Select from the list of state based imagery, and view the selected state in a project.



8) Enjoy the imagery!



For more information, contact GIS Specialists Brian Vanderbilt, 801-844-2930, or Louise Mathews, 801-844-2934



"The U.S. Department of Agriculture (USDA) prohibits discrimination in all its programs and activities on the basis of race, color, national origin, gender, religion, age, disability, political beliefs, sexual orientation, and marital or family status. (Not all prohibited bases apply to all programs.) Persons with disabilities who require alternative means for communication of program information (Braille, large print, audiotape, etc.) should contact USDA's TARGET Center at (202)720-2600 (voice and TDD). To file a complaint of discrimination, write USDA, Director, Office of Civil Rights, Room 326 Whitten Building, 1400 Independence Avenue, SW, Washington D.C. 20250-9410 or call (202) 720-5964 (voice or TDD). The USDA is an equal opportunity provider and employer."