

**UNITED STATES DEPARTMENT OF AGRICULTURE**

Farm Service Agency  
Washington, DC 20250

<b>Acreage and Compliance Determinations 2-CP (Revision 16)</b>	<b>Amendment 23</b>
---	---------------------

**Approved by:** Deputy Administrator, Farm Programs



**Amendment Transmittal**

**A Reasons for Amendment**

Paragraph 340 has been amended to provide users the option to search for a Tract Number in the CARS Mapping Application.

<b>Page Control Chart</b>		
<b>TC</b>	<b>Text</b>	<b>Exhibit</b>
	3-219 through 3-224	



339 Status Reports (Continued)

**B Status Report Descriptions (Continued)**

Report	Description
Farms with Deleted Field Due to Deleted Field Number in Farm Records	Provides a list of fields automatically deleted from CARS due to that field number being deleted from farm records. This report will include the following: <ul style="list-style-type: none"> <li>• producer name</li> <li>• core customer id</li> <li>• farm number</li> <li>• tract number</li> <li>• field number</li> <li>• crop name</li> <li>• crop type</li> <li>• intended use</li> <li>• actual use</li> <li>• irrigation practice</li> <li>• reported acres.</li> </ul> <p><b>Notes:</b> This report is available beginning with 2017.</p> <p>Field level FSA-578 records that are dropped during rollover from the next CARS program year due to invalid field number will not show on the CARS status report “Farms with Deleted Field Due to Deleted Field Number in Farm Records”.</p>
Farms with no FSA-578 in CARS by Producer	Provides a list of farms in Web Farm Records with no FSA-578 in CARS for the selected producer.

**C Action**

CLICK “**Reports**” under “CARS Menu” on the left navigation.  
 Select the button next to the status report to be printed.  
 CLICK the button next to “**PDF**” or “**Excel**”.  
 CLICK “**Generate Report**”.

## 340 Accessing Farm Map Print Options

### A Overview

\*--Users can access farm map printing options from the following CARS screens:

- Reports
- Acreage Report Search.

Maps are available to print for ad hoc purposes particularly in incidences when CITRIX is unavailable, or no other up-to-date hard copy maps exist.

**Notes:** Regardless of the program year selected, because of software limitations, only the current year imagery and CLU for that specific year will be displayed.

For procedure for generating the Receipt for Service, see paragraph 109.

### B Accessing the Map Print Option from the Reports Screen

The following is an example of the Reports Screen.

The screenshot shows a web interface titled "FSA-578". It contains several radio button options: "FSA-578 \*", "FSA-578C \*", "FSA-578 History", "FSA-578 Summary \*", "Map \*", "FSA-578 (Operator Print) \*", and "FSA-578 (Producer Print) \*". The "Map \*" option is selected. Below these options is a text input field labeled "Farm Number". To the right of the radio buttons, there is a note: "\* Receipt for service can be triggered from this radio button" and a checkbox labeled "Generate Receipt for Service".

### C Action for Printing a Map from the Reports Screen

To print a map for the farm from the Reports Screen:

- CLICK the “**Map**” radio button
- enter a farm number
- CLICK the “**Generate Report**” button
- in MS Edge or Google Chrome: CLICK the 3 dots in the upper-right corner of the browser window and select the “**Print**” option.--\*

### D Accessing the Map Print Option from the Acreage Report Search Screen

Users will be able to print a map for a specific farm by entering a farm number or searching a list of farms by producer from the Acreage Report Search Screen.

## 340 Accessing Farm Map Print Options (Continued)

**D Accessing the Map Print Option from the Acreage Report Search Screen (Continued)**

The following is an example of the Acreage Report Search Screen.

\*\_\*

Year: 2022      State: [ ]      County: [ ]

Please enter a farm number, tract number, or search for a producer in SCIMS

**Producer**  
 **Farm Number** [ ]  
 **Tract Number** [ ]

\* Receipt for service can be triggered from this button  
 Generate Receipt for Service

Submit    Print Map \*    Cancel

--\*

**E Action for Printing a Map from the Reports Screen**

To print a map using producer search:

- CLICK the “**Producer**” radio button
- CLICK “**Submit**”
- select the producer from the SCIMS Customer Search Screen

**Note:** The Crop Acreage Reports Screen will be displayed to provide a list of farms for the selected producer.

- click the radio button next to the farm number for the map to be printed
- CLICK “**Print Map**”
- \*--In MS Edge or Google Chrome: CLICK the 3 dots in the upper-right corner of the browser window and select the “**Print**” option.

To print a map using farm search:

- enter the farm number for the map to be printed
- CLICK “**Print Map**”
- in MS Edge or Google Chrome: CLICK the 3 dots in the upper-right corner of the browser window and select the “**Print**” option.--\*

**Notes:** See subparagraph F for information on printed map display.

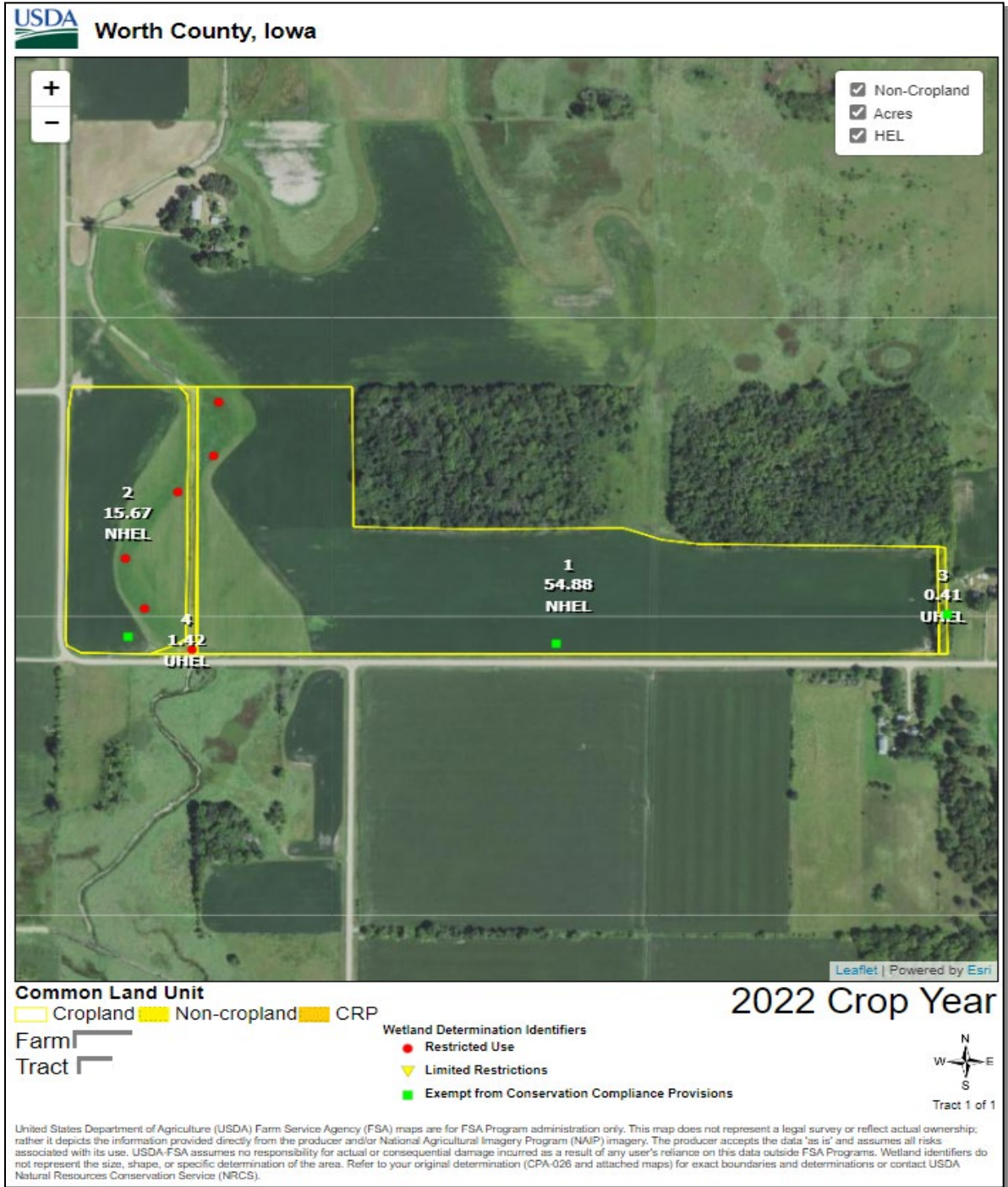
See paragraph 103 for farm selection on the Acreage Reporting Search Screen for acreage reporting.

See paragraph 104 for additional information and available options on the Crop Acreage Reports Screen.

340 Accessing Farm Map Print Options (Continued)

F Map Display

A map at the tract level will be displayed. If there are multiple tracts on the farm, users can \*--use the scrollbar to scroll down and view each map. All maps are created in a portrait format.

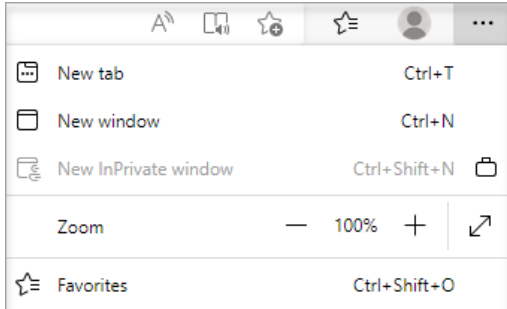


--\*

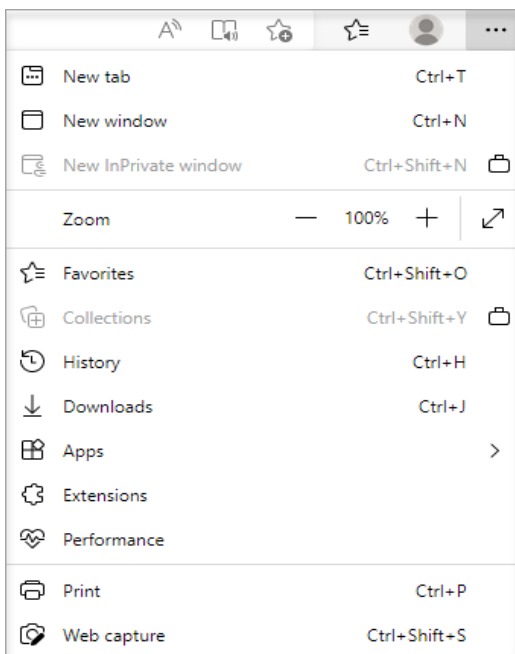
340 Accessing Farm Map Print Options (Continued)

**G Map Navigation Tools**

\*--To receive a closer look into a tract, click the 3 dots in the upper right-hand corner of the browser window to use the Zoom In (+) and Zoom Out (-) options.



By clicking on the 3 dots in the upper right-hand corner of the browser window, selecting “**Print**”, and then “**More Settings**”, users also have the option to increase, decrease or enter a value for the scale in which to view the map.



Users also can use their cursor to move around (or pan) within the map.

The tract map allows users to select or deselect the non-cropland, Acres, and HEL Determination checkboxes for display in the map.

**Note:** The position of the map labels cannot be changed within the map.--\*

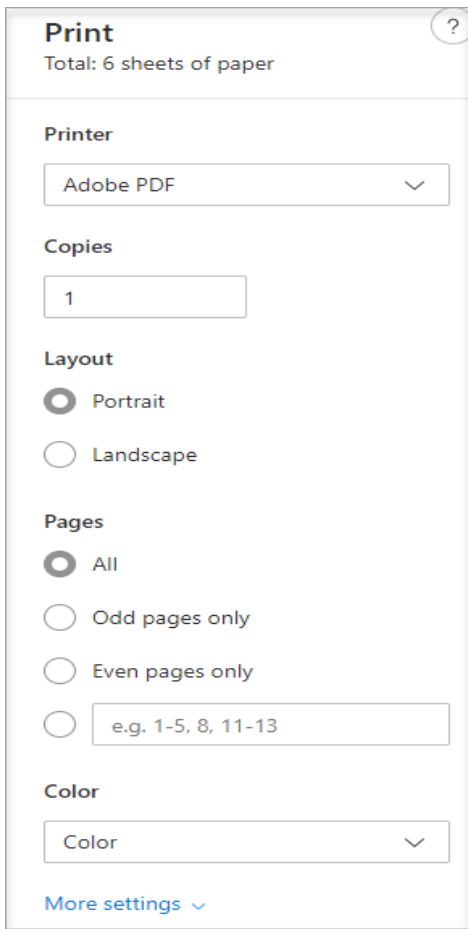
340 Accessing Farm Map Print Options (Continued)

H Using Print Preview to Select/Print a Tract Map

\*--For farms that have multiple tracts, both the MS Edge and Google Chrome browser window provides the option to view each tract map prior to printing.

Users have the choice to either print a specific tract on a Farm or print all the tracts on a Farm as displayed.

To print the map, users have the option to select the printer, the number of copies, select all tract maps or specific tract maps to be printed, and select whether to print the map in “Color” or “Black and White”. Once the print criteria has been selected, user can select the “**Print**” button to print a map.



--\*