

UNITED STATES DEPARTMENT OF AGRICULTURE

Farm Service Agency
Washington, DC 20250

**Acreage and Compliance Determinations
2-CP (Revision 16)**

Amendment 6

Approved by: Deputy Administrator, Farm Programs



Amendment Transmittal

A Reasons for Amendment

Subparagraph 22 D has been amended to remove the reference to extreme conditions when mailing FSA-578 to the producer for signature.

Subparagraph 25 B has been amended to clarify the process for disputed acreage reports.

Subparagraph 27 B has been amended to clarify that CIMS data is only available for insured crops.

Subparagraph 32 C has been amended to provide an updated link for accessing the cover crop termination guidelines.

Subparagraph 32 D has been amended to update the paragraph reference for revising an acreage report.

Subparagraph 35 B has been amended to remove the requirement for printing FSA-578 every year for continuous certification.

Paragraph 57 has been amended to update procedure for creating crop defaults.

Paragraph 58 has been added to provide responsibilities for requesting additional crops, types, and/or intended uses to be added to CVS.

Paragraph 59 has been added to provide procedure on generating CVS reports.

Subparagraph 79 F has been amended to correct the name for crop code 0105 from Turn Area/Terraces to Idle.

Subparagraph 83 A has been amended to:

- include information concerning 2019 reconstitutions and their effect on FSA-578
- instruct counties to enter the grazing intended use into CARS.

Amendment Transmittal (Continued)

A Reasons for Amendment (Continued)

Paragraph 84 has been amended to change the title and add a third note.

Subparagraph 986 B has been amended to clarify procedure for power of attorney and releasing FSA-578 data.

Exhibit 5 has been amended to provide clarification that the list of perennial crops are for those that have been approved for continuous certification. The list does not include all perennial crops.

Exhibit 6 has been amended to correct:

- ARD's for New Mexico potatoes and New York spring forage seeding and onions
- ARD for perennial forage in all States except Hawaii and Puerto Rico.

Exhibit 10 has been amended to:

- remove the intended use of GS from small grains
- add some crop names and crop types.

Exhibit 12 has been added to provide instructions for requesting new product requests.

Exhibit 12.5 has been added to provide the link for accessing CVS.

Page Control Chart		
TC	Text	Exhibit
1, 2 9, 10	2-3, 2-4 2-11, 2-12 2-17, 2-18 2-31 through 2-34 2-39, 2-40 2-81 through 2-116 2-127, 2-128 2-135 through 2-138 9-5, 9-6	1, pages 3, 4 5, pages 1, 2 6, pages 1-16 10, pages 1, 2 pages 5-8 pages 17-30 pages 33-36 pages 39, 40 pages 43, 44 12, pages 1, 2 (add) page 3 (add) 12.5, page 1 (add) 20, pages 1-8 (remove)

Note: Exhibit 20 was withdrawn in Amendment 3 because it was a duplicate of Exhibit 11. The pages were not listed on the page control chart for that amendment. They are listed here to ensure that they are removed from the handbook.

Table of Contents

Page No.

Part 1 General Information

1	Overview.....	1-1
2	Source of Authority and Related Handbooks	1-2
3	Access to Information.....	1-2
4	Responsibilities.....	1-5
5-20	(Reserved)	

Part 2 Acreage Report Procedures

Section 1 Responsibilities, Guidelines, and Reporting Dates

21	FSA-578 Purpose.....	2-1
22	Required Acreage Reports	2-2
23	Submitting Acreage Reports and Tree Crop Acreage.....	2-5
24	Reporting Dates	2-6
25	Processing Acreage Reports	2-12
26	Crop Data on Hard Copy Maps	2-16
27	Late-Filed Report of Acreage	2-17
28	Partial and Revised Reports	2-22
29	FSA-578 Corrections	2-26
30	Determining Planted Acreage of Certain Commodities	2-27
31	WRP Acreage.....	2-29
32	Cover Crop Guidelines	2-31
33	Reporting Organic Crops	2-35
34	Hoop Houses or High Tunnels.....	2-38
35	Continuous Perennial Forage.....	2-39
36	Continuous Acreage Reporting for CRP.....	2-43
37	Prevented Planting Acreage.....	2-44
38	Failed Acreage	2-57
39	Volunteer Acreage	2-60
40	Double-Cropping	2-61
41-56	(Reserved)	

Table of Contents (Continued)

Page No.

Part 2 Acreage Report Procedures (Continued)

Section 2 Creating Crop Default Records

57	Establishing Crop Characteristics	2-81
58	Responsibilities of Requesting Additional Crops, Types, and/or Intended Uses	2-82
59	CVS Reports	2-84
60-73	(Reserved)	

Section 3 Entering Basic Field Data

74	Crop Status Codes	2-115
75	Variety and Type Selection	2-118
76	Intended Use Codes	2-119
77	Land Use Codes	2-122
78	Entering “M”, “O”, and “S” Codes	2-123
79	Entering Dates	2-127
80	Irrigation Practice Codes	2-131
81	Recording Shares	2-132
82	Recording Prevented Planted Acreage and Failed Acreage on FSA-578	2-133
83	Data Loading FSA-578 Following a Reconstitution	2-136
84	Multi-Intended Use Crop	2-138
85-99	(Reserved)	

Table of Contents (Continued)

Page No.

Part 7 Computing Acreages (Continued)

Section 4 Measurement Services

927	Measurement Service Requests	7-101
928	Measurement Service Rates	7-103
929	Completing FSA-409, Measurement Service Record.....	7-107
930	Completing FSA-409A, Measurement Service Request Register	7-112
931	Measurement Service After Planting	7-114
932	Measurement Service Guarantee	7-116
933-957	(Reserved)	

Part 8 Digital Photography

958	Working With Digital Photocopies.....	8-1
959-982	(Reserved)	

Part 9 Data Sharing

983	Providing Data to Multiple Peril Crop Insurance Companies, Agents, and LA's - General Information	9-1
984	LA Requests.....	9-3
985	Crop Insurance Company and Agent Requests	9-5
986	Other Third Party Data Requests	9-6
987	Requesting Information on FSA-426.....	9-7

Table of Contents (Continued)

Exhibits

1	Reports, Forms, Abbreviations, and Redelegations of Authority
2	Definitions of Terms Used in This Handbook
3	Menu and Screen Index
4	(Reserved)
5	List of Perennial Crops
6	Crop Reporting Dates Beginning July 1, 2012, for 2012 and Subsequent Crop Years
7-9	(Reserved)
10	2003 and Subsequent Year Crops Reported on FSA-578
11	Crop Characteristic Codes
12	Instructions for Creating New Product Requests
12.5	Accessing CVS and Other Data
13	Request for Change in Crop/Commodity Final Reporting Date
14	Cover Crop Termination Zones
15	Completing CCC-576 for Prevented Planting and Failed Acreage Claims
16-19	(Reserved)
20	(Withdrawn--Amend. 3)
21-23	(Reserved)
24	Deviations From Prescribed Standards
25	Determining Acreage in Solid Plant, Skip-Row, and Sled-Row Patterns

22 Required Acreage Reports (Continued)

B Informing Producers

Producers of crops for which FSA-578 must be filed will be informed of the following:

- responsibilities regarding HELC and WC provisions
- availability and advantages of measurement services
- requirements for filing an accurate crop and acreage report, including the following:
 - the requirement for reporting all cropland on the farm for ARC/PLC, marketing assistance loans, and LDP benefits
 - the importance of correctly reporting crop acreage
 - crops that should be reported
 - final crop reporting dates
 - loss of program benefits for noncompliance.

C Methods of Notification

State and/or County Offices will publicize acreage reporting requirements. Publication sources can include the following:

- posting in the USDA Service Center
- news releases
- newsletters
- radio and television
- meetings
- internet
- * * *
- e-mail
- GovDelivery.

22 Required Acreage Reports (Continued)**D Methods of Certifying FSA-578**

Certification of FSA-578 is performed using FSA farm records which are maintained by administrative county.

County Offices may mail FSA-578's for certification in situations that make the process more convenient to the producer.

* * *

Note: The creation or use of forms for acreage reporting, other than those already established by the National Office, is not authorized.

E Who Can Certify

The following persons or legal entities can certify FSA-578:

- farm operator
- land owner, but only for crop acreage on land owned by to the landowner
- tenants and share-croppers, but only for crop acreage for which the producer has a share
- see 2-CRP for guidance on who may certify FSA-578's for CRP purposes when the producer is applying for CRP and no other FSA programs
- person authorized by power of attorney, according to 1-CM, by someone who can certify.

24 Reporting Dates (Continued)**G Requesting Changes to Crop ARD's (Continued)**

State Offices will submit **both** of the following to **RA.FSA.DCWA2.ppb@wdc.usda.gov**, no later than 120 days before the earlier of either the current or proposed ARD:

- completed Exhibit 13
- written justification based on State Office research and analysis.

Notes: Requests for changes will **not** be considered for approval unless all required information is included.

Requests are **not** guaranteed approval and will be reviewed and approved or disapproved by a USDA ARD's review board consisting of members of multiple USDA Agencies, including NASS, NRCS, and RMA.

25 Processing Acreage Reports

A Overview

Producers on farms participating in certain FSA programs are required to complete an FSA-578 acreage report certifying all cropland on the farm to be eligible for program benefits.

The FSA-578 is considered certified when the report includes all required data fields as described in subparagraph D and is signed by the producer.

B Before FSA-578 Is Filed

County Offices will advise persons of the following before FSA-578 is filed:

- an accurate and timely report is required
- the map the producer is using must accurately represent current farm practices and matches the FSA farm records data including FSN, tract, CLU, and acres
- photography, official acreages, and past records are available to help in reporting acreage
- measurement services are available and recommended if there is any doubt about the accuracy of any data being reported
- a discrepancy exists in the same crop year between previously reported crop acreage and crop acreage being reported, if applicable.

*--Notes: FSA will accept a manual report for the subsequent report. Both producers will be notified that the acreage report is in dispute. Neither acreage report will be considered acceptable. Both parties will be allowed to meet with COC to determine who has share risk of the acreage in dispute. COC will accept only 1 of the certifications.

County Offices **must not** in any way advise any person on the quantity of acreage that should be reported.--*

27 Late-Filed Report of Acreage

A Processing Late-Filed FSA-578

COC will process a late-filed FSA-578 when all of the following apply:

- the late-filed acreage report for a crop year is actually filed by the subsequent year's ARD

***--Note:** Any FSA-578, submitted **before** the subsequent year's ARD for the crops being reported, that satisfies all other requirements of this subparagraph, can be processed as a late-filed FSA-578 for the applicable year.

Example: 2018 corn has an ARD of July 15, 2018. If the corn is not reported by July 15, 2018, then it can be late-filed as long as it is filed before the subsequent year's ARD of July 15, 2019.

The late-filed FSA-578 can be loaded into CARS and can be certified if the producer has paid a measurement service fee and the acreage has been verified and determined.

If the acreage report was not late-filed by the subsequent year's ARD, the acreage shall be loaded into CARS but the certification date for the acreage **must not** be loaded into CARS.--*

- the producer filing the late-filed report pays the cost of a farm visit and the costs of verification and determination of crop acreage

Note: If payment of these costs is not remitted, do not process or take any action on the late filed FSA-578.

Exception: Long-term perennial crops may be verified for the current year by current year aerial image.

- physical existence of the late-filed crop or crop residue for the crop year being reported currently exists, to support the determination of acreage

***--Note:** A late filed FSA-578 **cannot** be accepted or revised after the field visit has--* been completed.

- the crop's use can be verified

27 Late-Filed Report of Acreage (Continued)

A Processing Late-Filed FSA-578 (Continued)

- the crop's acreage for the specific crop year can still be determined by FSA.

Example 1: A producer files FSA-578 for Field 1 on the farm by the reporting deadline. After the reporting date, the producer late-files FSA-578 for Field 2. This is considered a late-filed FSA-578.

Example 2: A producer reports corn as the initial crop on Field 1 of the farm by ARD. The producer then late-files FSA-578 reporting wheat in Field 1 as the initial crop. This is a late-filed FSA-578 resulting in a modification of an existing status code.

Example 3: A producer timely reports corn as the initial crop on Field 1 of a farm. The producer requests to revise the crop from corn to soybeans on Field 1 at a later date. This is considered a revision according to subparagraph 28.

B Accepting CIMS Data for Late-Filed FSA-578

*--RMA data will be used to satisfy the requirement for FSA-578 if the crop information for insured crops was reported timely to RMA.

The insured crop reported to RMA must match the crop and crop type reported to FSA.--*

Notes: RMA data must be CIMS data and not crop insurance agent records. Crop insurance data in CIMS is considered reported timely to RMA. FSA data in CIMS is not acceptable, it must be RMA data in CIMS.

The acreage reported to RMA and FSA may differ for legitimate reasons, such as double crop, subsequent crop, and prevented planting provisions.

The following are examples of when CIMS data can be used to satisfy the requirement for acreage report as timely filed:

Example 1: Producer timely reports 100 acres of corn and 100 acres of soybeans to RMA and files an acreage report with FSA after the ARD reporting showing 100 acres of corn/YEL/GR and 100 acres of soybeans/COM/GR. FSA will accept the producer's acreage report as timely filed based on CIMS data.

Example 2: Producer timely reports 200 acres of corn to RMA and files an acreage report with FSA after the ARD reporting showing 100 acres of corn/YEL/GR and 100 acres of soybeans/COM/GR. Since the soybean acreage report is not supported by CIMS data, late-file provisions will apply to the soybeans. FSA will accept corn as timely filed based on CIMS data.

32 Cover Crop Guidelines

A Introduction

Cover crops and the benefits of planting cover crops has gained strong interest among agricultural producers in recent years. Cover crops fulfill a variety of farming objectives when put into practice. Some examples of cover crop benefits may include: reduced soil erosion, preservation of soil moisture, reduction of crop inputs, weed control and improved soil health.

To ensure that USDA policies are coordinated and up to date with evolving cover crop practices, the Administrators of the Natural Resources Conservation Service (NRCS), Risk Management Agency (RMA) and Farm Service Agency (FSA) organized an interagency workgroup to develop consistent, simple and flexible policy across the three agencies.

National and local experts, along with multiple stakeholders, were involved in the process. Research literature, plant growth, soil hydrology models, and input from national/local experts in cover crop management provided the basis for developing cover crop guidelines that are applicable to all USDA programs

B Definition of Cover Crop

Cover crop means crops, including grasses, legumes, and forbs, for seasonal cover and other conservation purposes. Cover crops are primarily used for erosion control, soil health improvement, and water quality improvement. The cover crop may be terminated by natural causes, such as frost, or intentionally terminated through chemical application, crimping, rolling, tillage, or cutting.

Note: A cover crop managed and terminated according to NRCS Cover Crop Termination Guidelines is **not** considered a crop for crop insurance purposes.

These crops are used primarily for their conservation benefit and not for grain or forage harvest. They are typically annual, winter annual or biennial type plants used as temporary soil cover between cash crops as opposed to perennial plants that are planted for the purpose of establishing pasture, rangeland or other permanent vegetative cover.

For acreage reporting purposes, a cover crop is certified cover crop, 0319, COVRC, along with one of the 4 crop types in subparagraph D, and an intended use code of "CO". The cover crop may be grazed, hayed or foraged, provided the primary use is a conserving cover. It is critical that the producer, when reporting acreage to USDA distinguish whether the crop is being used primarily for cover, grain, grazing or forage.

Cover crops can be planted:

- before a subsequent crop
- after prevented planting acreage
- after a planted crop
- with no subsequent crop planted
- into a standing crop.

32 Cover Crop Guidelines (Continued)**C Termination Guidelines**

To be an acceptable cover crop, a cover crop must be properly terminated according to USDA Cover Crop Termination Guidelines. The cover crop may be terminated by natural causes, such as frost, or intentionally terminated through chemical application, crimping, rolling, tillage, or cutting.

The termination guidelines:

- provide the timeframe for terminating cover crops
- are based on zones
- apply to non-irrigated cropland
- *--can be accessed at
https://www.nrcs.usda.gov/wps/portal/nrcs/detailfull/plantmaterials/technical/publications/?cid=stelprdb1077238#Guidelines.--*

A copy of the map showing the Cover Crop Termination Zones and a list of counties is provided in Exhibit 14. Any questions about Cover Crop Termination Guidelines should be directed to NRCS.

32 Cover Crop Guidelines (Continued)

D Reporting Cover Crops

Beginning with the 2017 crop year, cover crops meeting the termination guidelines, as provided in subparagraph C, will be reported as Cover Crop, 0319, COVRC, with an intended use of “CO” and 1 of the following 4 crop types.

Crop Type	Definition
Cereals & other grasses	Includes any cover crop that is classified as a grass plant or cereal grain and would include but not be limited to the following cover crops - cereal rye, wheat, barley, oats, black oats, triticale, annual ryegrass, pearl millet, foxtail millet (also called German, Italian or Hungarian millet), sorghum sudangrass, sorghum and other millets and grasses.
Legumes	Includes any cover crop that is classified as a legume, including but not limited to clovers, vetches, peas, sun hemp, cowpeas, lentils and other legumes.
Brassicas & other broadleaves	This category includes any cover crop that is classified as a non-legume broadleaf, including but not limited to Brassicas such as radishes, turnips, canola, rapeseed, oilseed rape, and mustards, as well as other broadleaf plants such as phacelia, flax, sunflower, buckwheat, and safflower.
Mixtures	Includes fields where mixes of two or more cover crop species are planted at the same time, for example oats and radishes.

If crop acreage reported as a cover crop is harvested for any use other than forage or grazing and is not terminated according to subparagraph C, that crop will no longer be considered a *--cover crop. The acreage must be revised to the actual crop according to paragraph 28.--*

32 Cover Crop Guidelines (Continued)***--E Revising Acreage When Cover Crop Was Not Terminated--***

When crop acreage is reported as a cover crop, but is not terminated according to subparagraph C, the acreage report must be revised. The crop is not considered a cover crop unless it is terminated; therefore, * * * the crop that was initially reported as a cover crop must be revised. This is necessary as a cover crop is not considered as reported cropland. For example, rye was planted as a cover crop and recorded as such, but rye was not terminated according to subparagraph C. The rye was incorporated into the soil, so the crop needs to be revised to rye and the intended use needs to be revised to GM.

***--Example:** Wheat that was reported as a cover crop (crop code 0319) with a type of CEG, but the cover crop was not terminated according to subparagraph C. The crop needs to be revised to wheat (crop code 0011).--*

35 Continuous Perennial Forage

A Certify Acreage

To streamline the acreage reporting process, a method to certify selected **perennial** crops on a continuous basis was developed as a pilot program starting in 2016. This process was developed to reduce:

- producer visits to the County Office
- CARS network congestion.

Continuous certification allows a producer to report the certified acreage so it will roll forward annually and does not require additional action on the part of the producer or FSA in subsequent years unless a change to the acreage report occurs.

B Continuous Certification Process

The continuous certification process for perennial crops requires an initial certification on FSA-578. The producer may select the continuous certification option at any time after the crop is certified.

The following table provides information on operator and producer enrollment into continuous certification.

IF the continuous certification option is selected by...	THEN the continuous certification is applicable to...
the operator	all fields on the farm for the specific crop/crop type/intended use.
any producer sharing in the crop	field(s) in which the producer has a share for the specific crop/crop type/intended use.

If the continuous certification option is selected by the applicable final reporting date in the subsequent year, the acreage report is considered timely filed for the current year and will remain in effect for subsequent years until any change is reported to FSA.

Example 1: Operator Smith reports Grass/NAG/GZ for 2017 by the applicable final reporting date and selects the continuous certification option. For 2017 and subsequent years, operator Smith’s FSA-578 for Grass/NAG/GZ is considered certified and no additional action is required by operator Smith or FSA until a change occurs.

***--Note:** The County Office will maintain FSA-578 for the duration of the enrollment period and notate on FSA-578 that it is enrolled in continuous certification.--*

35 Continuous Perennial Forage (Continued)**B Continuous Certification Process**

Example 2: Operator Smith reports Grass/NAG/GZ for 2017 by the applicable final reporting date and does not select the continuous certification option. Operator Smith returns to the office 3 weeks after the final reporting date and selects the continuous certification option. For 2018 and subsequent years, operator Smith's FSA-578 for Grass/NAG/GZ is considered certified and no additional action is required by operator Smith or FSA until a change occurs.

Example 3: Operator Smith reports Grass/NAG/GZ for 2017 by the applicable final reporting date, but does not select the continuous certification option. In 2018, operator Smith comes to the office after the final acreage reporting date and wants to select the continuous certification option. For 2018, the Grass/NAG/GZ is considered late-filed and operator Smith must file a 2018 FSA-578 prior to submitting a FSA-578C to select the continuous certification option.

Crops reported under continuous certification are subject to the same compliance spot checks as other FSA-578's.

C Selecting Continuous Certification

Producers may select continuous certification for perennial forage crops using FSA-578C * * *. The producers enrolling in continuous certification must have a share of the perennial crop.

Enrollment will be at the farm level by crop, crop type, and intended use.

Note: The continuous certification process does not prevent any producer from filing an annual acreage report.

Section 2 Creating Crop Default Records

57 Establishing Crop Characteristics

A Introduction

*--CVS is the official database that maintains crop characteristics and serves as a central commodity lookup table for use by CARS, NCT, and other program software applications. Exhibit 10 contains select data fields from CVS; that is, all the valid current year's crops, types, intended uses, and FAV status (land use code).

MIDAS CRM-Product Master is a copy of 2013 CVS data and subsequent years' and a database of requested new (crop) products.

Example: Lettuce, Bibb or Corn, Yellow are both products within Product Master. Through Product Master, FSA employees can view the full details about any product within CRM/Product Master/Search Products. Users will refer to the Product Master work instructions for additional instructions on searching for and reviewing products.

B MIDAS CRM-Product Master Course Requirements

The following AgLearn courses are minimum requirements for accessing and using CRM-Product Master:

- FN100 Introduction to MIDAS
- FN200 Basic Navigation of MIDAS CRM
- FN220 Managing the MIDAS Universal Worklist
- CT300 Product Master Overview
- CT310 Product Master - New Product Request.

C Requesting Additional Crops, Types, and/or Intended Uses Through CRM-Product Master

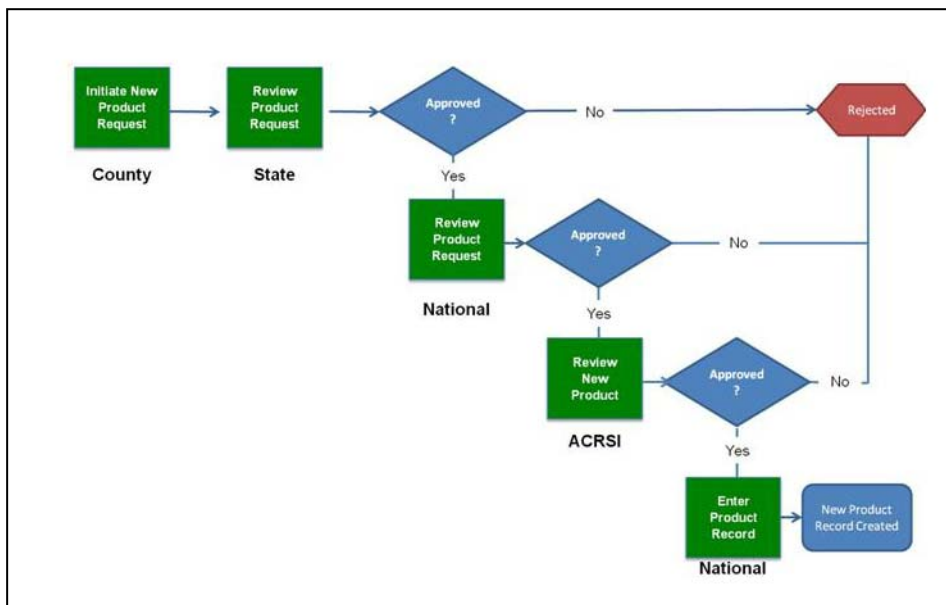
Occasionally, a producer will come into the County Office and report his or her acreage on a crop that is not yet in the FSA system. CRM-Product Master is the system for initiating a new product (crop) request.

If a producer reports a crop, type, or intended use that is **not** currently available in Exhibit 10, **CVS Reports**, or Product Master, the County Office will use the "New Product Request" function in CRM-Product Master to request the addition. The automated New Product Request process will be initiated by the County Office, in most cases. See **Exhibit 12** for instructions.--*

57 Establishing Crop Characteristics (Continued)

*--D New Request Product Workflow Overview

The following diagram describes the new product request workflow.



58 Responsibilities of Requesting Additional Crops, Types, and/or Intended Uses

A County Office Responsibilities

County Offices are responsible for:

- performing a thorough review and analysis of all available data for the crop and its characteristics before submitting the request
- searching CRM-Product Master for pending/existing requests to avoid duplicate requests
- providing sufficient information in the request to justify the addition of the crop, type, or intended use
- attaching supportive documentation (for example, acres, prices, and yields specific to their region) to justify the new product request
- specifying the request is for acreage reporting, NAP crop eligibility, or both.

Note: Ensure that the request is handled according to 1-NAP.--*

--58 Responsibilities of Requesting Additional Crops, Types, and/or Intended Uses (Continued)*B State Office Responsibilities**

State Offices are responsible for:

- ensuring that the information submitted by the County Office is thorough and complete before approving the new product request
- searching CRM-Product Master for pending/existing requests to avoid duplicate requests
- completing additional research of requested products as needed
- ensuring that all requests are handled according to 1-NAP
- communicating to County Offices of the new product request approval or disapproval status.

C National Office Responsibilities

National Office responsibilities include, but are not limited to:

- reviewing all requested new product request information
- completing additional research of requested products
- compiling recommendation documents for each requested product
- coordinating with other agencies
- updating all applicable systems and tables
- updating all applicable handbooks
- providing notification of system/crop data changes.

Once the National Office reviews the new product request, an e-mail will be sent to all parties involved in the new product request (State and County Offices), notifying them of National Office approval or rejection.

D Supplementing an Existing/Pending New Product Request

As new products are added to CVS and Exhibit 10, they are available for nationwide use in FSA transactions, and not limited for use by only the State or County Office that requested the new product. State or County Offices may add regional supporting documentation to an existing new product request. Field Offices are encouraged to review pending new product requests before submitting a new request. See **Exhibit 12** for instructions.--*

--59 CVS Reports*A Overview**

CVS reports provide the means to view CVS data for a specific year. Reports are year-specific and are available from the current year to 1997.

There are 4 types of reports (or tables) available from the CVS report menu:

- Crop/Type/Intended Use Report
- Crop/Type Report
- Crop Report
- Crop/Type/Status Report.

B Purpose

The reports should be used as a reference for:

- new crop (product) requests
- current or historical crop table information.

C Accessing CVS Reports

All FSA employees with Level 2 E-Authentication automatically have read-only access to the CVS reports. CVS tables are available for download in the CVS or Excel file format. Since the reports are static data reports, there is no requirement to retain the downloaded files.

Note: For detailed instructions, see **Exhibit 12.5**.

D Crop/Type/Intended Use Report

The Crop/Type/Intended Use Report is a summary table by specific year crop, crop type, and intended use. The following table identifies the attributes of the report.

Name	Short Description
Crop Code	A unique 4-digit numeric code associated to a crop name or product.
Crop Name	The alpha-character name of the crop (plant or animal product). May contain special characters.
Crop Abbr	A unique 3- to 5-digit alpha-character code associated to the crop name.
Crop Type Name	The alpha-character name of the crop classification of the crop of animal product.
Crop Type Code	A unique 3- to 5-digit alpha-character code of the crop type name.
Intended Use Code	A 2-digit alpha-character code associated to the intended use term or description.
Intended Use Desc	The alpha-character name of the intended use code.

--*

*--59 CVS Reports (Continued)

D Crop/Type/Intended Use Report (Continued)

Name	Short Description
Land Use Code	The alpha-character code associated to a type of crop classification that is specific to acreage reporting.
Land Use Desc	The alpha-character name of the land use code.
Last Change Date	The date of roll-over. Data is displayed as date, 24-hour time, and time zone. Example: 08/29/2017 15:48:47 CDT.

E Crop/Type Report

The crop/type report is a summary table available by specific year describing crop name and crop type. The following table identifies the attributes of the report.

Name	Short Description
Crop Code	A unique 4-digit numeric code associated to a crop name or product.
Crop Name	The alpha-character name of the crop (plant or animal product). May contain special characters.
Crop Abbr	A unique 3- to 5-digit alpha-character code associated to the crop name.
Crop Type Name	The alpha-character name of the crop classification of the crop of animal product.
Crop Type Code	A unique 3- to 5-digit alpha-character code of the crop type name.

F Crop Report

The Crop Report is a summary table available by specific year describing crop codes, crop name, and crop abbreviation.

Name	Short Description
Crop Code	A unique 4-digit numeric code associated to a crop name or product.
Crop Name	The alpha-character name of the crop (plant or animal product). May contain special characters.
Crop Abbr	A unique 3- to 5-digit alpha-character code associated to the crop name.

--*

*--59 CVS Reports (Continued)

G Crop/Type/Status Report

The Crop/Type/Status Report is a summary table available by specific year describing crop name, crop type, and the 3 crop status levels.

Name	Short Description
Crop Code	A unique 4-digit numeric code associated to a crop name or product.
Crop Name	The alpha-character name of the crop (plant or animal product). May contain special characters.
Crop Abbr	A unique 3- to 5-digit alpha-character code associated to the crop name.
Crop Type Name	The alpha-character name of the crop classification of the crop of animal product.
Crop Type Code	A unique 3- to 5-digit alpha-character code of the crop type name.
Crop Status Level 1 Code	A unique 1-digit alpha-character code used to define unique crop reporting situation; for example, double-cropping, subsequent, or experimental.
Crop Status Level 1 Desc	A unique term or phrase describing the Crop Status Level 1 code.
Planting Status Level 2 Code	A 1-digit alpha-character code describing how the crop was reported by producer; for example, failed, prevented planted, or volunteer. The non-unique F, N, and P codes have different definitions than Level 1 codes.
Planting Status Level 2 Desc	A unique term or phrase describing the Crop Status Level 2 code.
Concurrent Planting Status Level 3 Code	A 1-digit alpha-character code describing the cropping practice or use of the reported crop. The non-unique M code has a different definition than the Level 1 code.
Concurrent Planting Status Level 3 Desc	A unique term or phrase describing the Crop Status Level 3 code.
Last Change Date	The date of roll-over. Data is displayed as date, 24-hour time, and time zone. Example: 08/29/2017 15:48:47 CDT.

--*

*--59 CVS Reports (Continued)

H Crop/Type/Status Report's Crop Status Level 1 Codes

The following table summarizes Crop Status Level 1 codes and descriptions.

Code	Crop Status Level 1 Description	Full Description
C	Cover Crop	Cover crop status code.
D	Double Crop – CC followed by different CC	Covered commodity followed by a different covered commodity. Meets double-cropping definition.
E	Double Crop – CC followed by FAV/wild rice or vice versa	Covered commodity followed by FAV/wild rice or vice versa. Meets double-cropping definition.
F	Double Crop – FAV followed by different FAV	FAV followed by a different FAV. Meets double-cropping definition.
G	Double Crop – non-CC/non-FAV followed by CC or vice versa	Noncovered commodity/non-FAV followed by covered commodity or vice versa. Meets double-cropping definition.
H	Double Crop – non-CC/non-FAV followed by FAV or vice versa	Noncovered commodity/non-FAV followed by FAV or vice versa. Meets double-cropping definition.
I	Initial – first crop planted on acreage	The first crop planted on the acreage.
J	Subsequent – CC followed by CC	Covered commodity followed by a different covered commodity. Does not meet double-cropping definition.
K	Subsequent – CC followed by FAV/wild rice or vice versa	Covered commodity followed by FAV/wild rice or vice versa. Does not meet double-cropping definition.
L	Subsequent – FAV followed by FAV	FAV followed by a different FAV. Does not meet double-cropping definition.
M	Subsequent – non-CC/non-FAV followed by CC or vice versa	Noncovered commodity/non-FAV followed by covered commodity or vice versa. Does not meet double-cropping definition.
N	Subsequent – non-CC followed by FAV	Noncovered commodity/non-FAV followed by FAV or vice versa. Does not meet double-cropping definition.
O	DoubleCrop – non-CC/non-FAV followed by non-CC/non-FAV	Noncovered commodity/non-FAV followed by a noncovered commodity/non-FAV. Meets double-cropping definition.
P	Subsequent – non-CC/non-FAV followed by non-CC/non-FAV	Noncovered commodity/non-FAV followed by a noncovered commodity/non-FAV. Does not meet double-cropping definition.
R	Repeat – planting of the same crop/acreage	Repeat status code.
X	Experimental	Experimental status code.

--*

*--59 CVS Reports (Continued)

I Crop/Type/Status Report’s Planting Status Level 2 Codes

The following table summarizes Planting Status Level 2 codes and descriptions.

Code	Planting Status Level 2 Description	Full Description
F	Failed	Failed status code.
N	Not Applicable	The “N” secondary status code used to be called “Not Planted”. In 2015, the description was changed to “Not Applicable”. The code is used in the same manner.
P	Prevented Planted	Prevented Planted status code.
V	Volunteer	Volunteer status code.

J Crop/Type/Status Report’s Planting Status Level 3 Codes

The following table summarizes Planting Status Level 3 codes and descriptions.

Code	Planting Status Level 3 Description	Full Description
M	Multiple	Multiple tertiary status code. Note: The code signifies that the crop can be: <ul style="list-style-type: none"> • alternate • interplanted • multi-use.
U	Multiple Intended Uses	Multiple Intended Uses tertiary status code. Note: The “U” status code signifies that the crop can have multiple intended uses and replaces the intended use of Grain/Grazing (GS) for barley, corn, oats, rye, and triticale.
	Blank	The Blank category translates to “None”. The CARS software requires a value in certain cases, so this description is used to meet that requirement.

--*

60-73 (Reserved)

Section 3 Entering Basic Field Data

74 Crop Status Codes

A Using Crop Status Code “D”, “E”, “F”, “G”, “H”, or “O”

Use crop status code “D”, “E”, “F”, “G”, “H”, or “O” in the first character field for double crop when a crop meets all of the following:

- is not the first crop in the field
- is not a repeat of the first crop in the field
- *--meets the double-cropping guidelines in paragraph 40.--*

This table defines the valid codes to be used in the first character field when entering double crop acres.

Code	Definition
D	Covered commodity followed by a different covered commodity - meets double-cropping definition.
E	Covered commodity followed by FAV or wild rice or vice versa - meets double-cropping definition.
F	FAV followed by a different FAV - meets double-cropping definition.
G	Noncovered commodity/non-FAV followed by covered commodity or vice versa - meets double-cropping definition.
H	Noncovered commodity/non-FAV followed by FAV or vice versa - meets double-cropping definition.
O	Noncovered commodity/non-FAV followed by a noncovered commodity/non-FAV meets double-cropping definition.

B Using Crop Status Code “J”, “K”, “L”, “M”, “N”, or “P”

Use crop status codes “J”, “K”, “L”, “M”, “N”, or “P” in the first character field for a subsequent crop when a crop meets all of the following:

- is not the first crop in the field
- is not a repeat of the first crop in the field
- *--does **not** meet the double-cropping guidelines in paragraph 40.--*

74 Crop Status Codes (Continued)

B Using Crop Status Code “J”, “K”, “L”, “M”, “N”, or “P” (Continued)

This table defines the valid codes to be used in the first character field when entering subsequent crop acres.

Code	Definition
J	Covered commodity followed by a different covered commodity – does not meet double-cropping definition.
K	Covered commodity followed by FAV or wild rice or vice versa – does not meet double-cropping definition.
L	FAV followed by a different FAV – does not meet double-cropping definition.
M	Noncovered commodity/non-FAV followed by covered commodity or vice versa – does not meet double-cropping definition.
N	Noncovered commodity/non-FAV followed by FAV or vice versa – does not meet double-cropping definition.
P	Noncovered commodity/non-FAV followed by a noncovered commodity/non-FAV does not meet double-cropping definition.

Note: A second or subsequent crop is the crop planted after the first crop on the same field or subdivision within a crop year that does not meet the definition of a double crop or a repeat crop.

C Using Crop Status Code “R”

Use crop status code “R” in the first character field when the crop is a repeat of the same initial crop planted.

Example: If the first crop planted on the field was “Carrots” with a type of “Mini” and an intended use of FH and the second planting has all of the same characteristics, use crop status code “R”.

The repeat status code “R”, along with the selected planting period, will indicate the sequential repeat plantings for the crop year. See subparagraph 162 D for planting period selection in CARS.

D Using Crop Status Code “X”

Use crop status code “X” in the first character field when a crop is considered experimental. A crop is considered experimental if it meets all of the following:

- crop is planted for experimental purposes conducted under the direct supervision of a State experiment station or commercial company
- production is destroyed before harvest or used for testing or other experimental purposes
- a representative of the State experiment station or the commercial company certifies that any production harvested from the experiment will not be marketed in any form

79 Entering Dates**A Planting Date**

The planting date is a required entry. For each field, enter the actual planting date of the crop. If the crop was planted over several days, enter the average planting date.

Note: For crops that do not require a planting date, see subparagraph F.

B Reason End Year Date Is Important

The end year date must be greater than the present FSA-578 crop year to have fields, including CRP, rolled over to the next crop year.

Examples:End year date of “2003” was entered for a field in a previous year’s FSA-578 process. The field will then be rolled over to the current year’s FSA-578. It will not be rolled over to the 2004 FSA-578.

End year date was not entered for a field in a previous year’s FSA-578 process. The field will not be rolled over to the current year FSA-578.

C CRP and End Year Dates

County Offices must enter the appropriate end year date, from CRP-1, in all new CRP fields for the current year. Failure to enter the date will mean that the field will not be rolled over to future FSA-578’s.

D Other Crops and End Year Dates

Enter an end year date for a field only if that crop will maintain the exact same crop characteristics next year. This includes the same crop status, intended use, and type.

Example: A perennial crop that is entered with an end year date will prevent the producer from having to report the crop every year. The end year date will allow the crop to roll over each year.

79 Entering Dates (Continued)

E What End Year Date to Enter

Enter end year date according to the examples in the following table for CRP and other fields that meet the qualifications. End year date is optional.

IF field characteristics will stay the same through...	THEN ENTER...
2011, but may change for 2012	2011.
2012, but may change for 2013	2012.
Example: Producer has long-term agreement with perennial cover crop to remain through 2012.	
2017, but will change for 2018	2017.
Example: Producer has CRP-1 that expires in 2017.	

Note: Enter the year CRP-1 expires for CRP practices that have easements. Do not enter the year the easement expires.

End year date must be removed before deleting FSA-578 for purpose of processing a reconstitution.

F Crops Without a Planting Date

The following crops do not require a planting date. If an end date is entered, the crop characteristics will roll over to the next year.

Crop/Land Use	Crop Type	Crop Code
CRP		0099
Grass	NAG - Native Grass	0102
Fallow		0101
Herbs	NAT - Native Spearmint	5000
Honey		1190
Maple Sap		0100
Mixed Forage	NSG - Native Grass Interseed	0296
Pecans	NAT - Native Pecans	0146
Skip Rows/Sled Rows		0790
--Idle--		0105

82 Recording Prevented Planted Acreage and Failed Acreage on FSA-578 (Continued)

C Recording Failed Acreage on FSA-578 When Entire Acreage Claimed on CCC-576 is Disapproved and No Measurement Service or Spot Check Is Performed

Use the following to record failed acreage on FSA-578 when the entire failed acreage is disapproved and no measurement service or spot check is performed.

IF the producer has reported failed acreage and COC...	THEN...
disapproved the entire acreage claimed on CCC-576	Enter zero for the determined acres on FSA-578.

Example: When entire reported failed acreage is disapproved.

Field	Crop	Status Code	Reported Acreage	Determined Acreage
3	Wheat	IF	60	0

83 Data Loading FSA-578 Following a Reconstitution**A Effect of a Reconstitution on a Certified FSA-578**

When a reconstitution is approved for a farm that has been certified, FSA-578:

- is automatically deleted from CARS for the respective year
- must be re-entered into CARS after completion of the reconstitution
- for the resulting farm(s) must be recertified within 30 calendar days following completion of the reconstitution.

*--Beginning with the 2019 crop year, when a farm has been reconstituted, FSA-578 will not automatically be deleted in CARS. CARS will move crop/field data from the parent farm and/or tract to the child farm and/or tract.

If the farm has been certified, the farm will remain certified after the crop data is moved to the child farm and/or tract.

See paragraph 103.5 for additional action that may be required after a reconstitution in Farm Records.--*

B Action Required After Completion of a Reconstitution on a Previously Certified Farm

Following completion of the reconstitution, FSA-578's must be re-entered into CARS for the resulting farm(s). Applicable information from the previous FSA-578's for the parent farm(s) may be used as the source document for re-entering the FSA-578 data for the child farm(s).

C Time Requirement for Reloading FSA-578

FSA-578 for the child farm(s) must be re-entered within 30 calendar days following completion of the reconstitution.

Note: Any benefits for the parent farm(s) are no longer valid and the benefits for the child farm(s) **cannot** be computed until FSA-578 is entered.

83 Data Loading FSA-578 Following a Reconstitution (Continued)

D Signature Requirements for the Reloaded FSA-578

The following table provides guidance for when FSA-578 must be signed after a reconstitution.

IF...	THEN...
only the farm and tract number changed as a result of the reconstitution	the original FSA-578 may be attached to the resulting farm's FSA-578 following data load and no new signature(s) is required.
anything other than the farm and tract number changes, including total reported acres of the crop on the treated farm, or share, shareholder, crop, crop type, intended use, etc.	signatures are required on a new FSA-578's for the reconstituted farm.

For a new FSA-578 with changes, producers must sign and date FSA-578 by the later of:

- 30 days, or
- the ARD for the crop.

Example 1: Farm #1 has 100 acres of cropland. Farmer A reported that 50 acres of the farm was sold to Farmer B and subsequently requested a reconstitution. Farmer B was added to the farm as an OT before the reconstitution was completed. Farmer A reported 50 acres of corn on farm 1, tract 1, field 1. Farmer B reported 50 acres of soybeans on farm 1, tract, field 2. Signatures on each of the resulting 2 new farms FSA-578's are not required since the only information that changed was the farm and tract numbers. The original FSA-578 shall be copied and attached to both resulting FSA-578's.

Example 2: Farm #5 has 100 acres of cropland. The owner of Farm #5, Farmer A, certifies 100 acres of corn planted on two 50-acre fields (fields 1 and 2). Farmer A later reports that field 2 was sold to Farmer B and requests a reconstitution. Farm #5 is divided into Farm #1000 and Farm #1001. Farmer A is now the owner of Farm #1000. A new signature is not required on the resulting FSA-578 for Farm #1000. Farmer B, the new owner of Farm #1001, would be required to sign FSA-578 for Farm #1001 since there is a change to shareholder and shares.

--84 Multi-Intended Use Crop--

A Reporting Crops With Multiple Intended Uses

Beginning with the 2019 crop year, crops that meet the definition of multi-use crop will be reported as 2 separate line items on FSA-578. Currently multi-use is limited to crops that are first grazed and then harvested as grain. Although this option is limited to the following crops, additional crops may be added later:

- barley
- oats
- rye
- triticale
- wheat.

By allowing the intended uses to be reported separately, it also allows certain other characteristics to be associated to the intended use. For, example, if there are two producers sharing on a crop, each one can be associated with a different intended use.

Example: Farm #1000 has two producers and two intended uses. Producer A has 100 percent share in the grazing of the wheat and Producer B has 100 percent of the grain.

Field	Crop/ Commodity	Variety/ Type	Irr Prac	Intended Use	Producer	Share
1	Wheat	Spring	NI	Grazing (GZ)	J. Smith	100.00
1	Wheat	Spring	NI	Grain (GR)	J. Doe	100.00

Notes: CARS software does limit this change to the 5 crops in this subparagraph, however, software does not limit the status codes that can be used.

The multi-use option associated with concurrent planting does not apply to the 5 crops.

--The grazing intended use must be loaded into CARS first. See paragraph 162.5 for more information.--

85-99 (Reserved)

985 Crop Insurance Company and Agent Requests**A Providing Information to Crop Insurance Companies and Agents**

Information provided to crop insurance companies and agents is intended only for the purpose of assisting in insuring a producer under a policy or plan of insurance.

Crop insurance companies and agents will use FSA-426 to request the following information:

- current year FSA-578 producer prints
- hard copy map.

When submitting requests for information on FSA-426, crop insurance companies and agents shall provide documentation that they are authorized to access the producer's records. Acceptable documentation includes 1 or more of the following for the current crop year:

- producer signed policy
- producer signed transfer/application policy
- Schedule of Insurance
- Notice of Acceptance/Policy Confirmation
- Summary of Insurance Protection
- a signed statement from the producer authorizing release of documents to the named crop insurance company and/or agent
- written certification on FSA-426.

Information requested by crop insurance companies and/or agents will be provided at **no charge**.

Note: County Offices will only provide 1 copy of the FSA-578 producer print or hard copy map at no charge.

County Offices will charge crop insurance companies and agents for subsequent copies of current year FSA-578 producer prints, maps, and for requests for prior year FSA-578 data.

985 Crop Insurance Company and Agent Requests (Continued)**B Charges for Copies**

Crop insurance companies and/or agents may be provided 1 current year FSA-578 producer print and map at **no cost**. FSA will charge for subsequent copies as follows:

- FSA-578 producer print - \$0.20 per page
- hard copy map; computer print or photocopy - \$1 per page.

Note: County Offices will use the program code for other reimbursement outlined in 3-FI to account for the money collected for information requests.

986 Other Third Party Data Requests**A Consent to Release FSA-578 Data to a Third Party Recipient**

Third party recipients of FSA-578 data other than multiple peril crop insurance companies, agents, and LA's must be authorized to obtain records by the producer to which the records pertain according to procedure in 3-INFO.

B Power of Attorney

Power of attorney for acreage reporting purposes is approved for signature authority **only**.

*--Data release using power of attorney for FSA-578 data is **not** permitted unless FSA-211 has all actions elected.

Follow 1-CM, Part 25 for policy on power of attorney and rules of authority.--*

Reports, Forms, Abbreviations, and Redelegations of Authority Reports (Continued)

Forms (Continued)

Number	Title	Display Reference	Reference
FSA-569	NRCS Report of HELC and WC Compliance		19, 20, 25, 26, 27, 249
FSA-577	Report of Supervisory Check	228	
FSA-578	Report of Acreage		Text, Ex. 2, 10, 19, 31
FSA-603	Collection Register for State and County		365
FSA-848B	Cost-Share Performance Certification and Payment (Includes FSA-848B-1, Continuation of FSA-848B)		246, 247, 257
FSA-850	Environmental Evaluation Checklist		246, 247
FSA-914	Livestock Indemnity Program Application		255
FSA-925	Livestock Forage Disaster Program Application		256
FSA-926	Livestock Indemnity Program - Third Party Certification		255
NRCS-CPA-026	Highly Erodible Land and Wetland Conservation Determination		391, 411, 413, 418
NRCS-CPA-052	Environmental Evaluation Checklist		246, 247

Reports, Forms, Abbreviations, and Redelegations of Authority Reports (Continued)

Abbreviations Not Listed in 1-CM

The following abbreviations are not listed in 1-CM.

Approved Abbreviation	Term	Reference
ACRSI	acreage crop reporting streamlining initiative	Text
AIP	approved insurance providers	Text
ARCPLC	Agriculture Risk Coverage and Price Loss Coverage	Text
ARD	acreage reporting date	Text
AUM	animal unit month	161, 162, 274
BWEP	Boll Weevil Eradication Program	17
CARS	Crop Acreage Reporting System	Text
CCM	compressed county mosaic	226, 345
CIMS	Comprehensive Information Management System	Part 5, Ex. 3
CLU	common land unit	Text, Ex. 2
CRM	Customer Relationship Management	57, 58, 74-76, 103, 276, Ex. 12, 19
CTAP	Cotton Transition Assistance Program	225, 245, 321
CVS	Compliance Validation System	57-59, 105, 161, 162, 162.5, 274, Ex. 10, 11, 12.5, 20
DGPS	Differential Global Positioning System	Ex. 2
DMLA-III	Dairy Market Loss Assistance Program III	34
DOQ	Digital Orthophotography	411, Ex. 2
FAA	Federal Aviation Administration	327, Ex. 2
FGDC	Federal Geographic Data Committee	416
FMVA	Field Market Value A	252
FMVB	Field Market Value B	252
FTP	file transfer protocol	411, 414, 416, Ex. 19
FW	farmed wetland	249, 390
Gateway	Geospatial Data Gateway	416
GPS	global positioning system	303, 326, 327, 369, Ex. 2
MDOQ	Mosaic Digital Orthophoto Quadrangle	394, 416
MT	Maintenance Tool	369
NAIP	National Agricultural Imagery Program	345, 347, 367, 419
NHEL	non highly erodible land	390, 412, 418
ODB	object data base	418
PLC	Price Loss Coverage	32, 243

List of Perennial Crops

--Following is the list of approved perennial crops for continuous certification.--

Crop Name	Crop Code	Crop Abbr	Type Name	Type Code	Intended Use	Land Use
Grass	0102	GRASS	Alkalai	ALK	FG, GZ, LS, SD, SO	
			Altai Wild Rye	AWR	FG, GZ, LS, SD, SO	
			American Mamegrass	AME	FG, GZ, LS, SD, SO	
			American Vetch	AMV	FG, GZ, LS, SD, SO	
			Arctared Fescue	FAC	FG, GZ, LS, SD, SO	
			Argentine Bahia	ARG	FG, GZ, LS, SD, SO	
			Bahia	BHI	FG, GZ, LS, SD, SO	
			Barbed Wire	BRB	FG, GZ, LS, SD, SO	
			Basin Wild Rye	BAS	FG, GZ, LS, SD, SO	
			Bearded Fescue	FSB	FG, GZ, LS, SD, SO	
			Beardless Wildrye	BER	FG, GZ, LS, SD, SO	
			Big Blue	BBL	FG, GZ, LS, SD, SO	
			Big Bluestem	BLB	FG, GZ, LS, PR, SD, SO	
			Blue Bunch Wheat	WBB	FG, GZ, LS, SD, SO	
			Blue Grama	GBU	FG, GZ, LS, SD, SO	
			Blue Panic	BPG	FG, GZ, LS, SD, SO	
			Blue Wild Rye	BWR	FG, GZ, LS, SD, SO	
			Bluegrass, Alpine	BAL	FG, GZ, LS, SD, SO	
			Bluejoint	BLJ	FG, GZ, LS, SD, SO	
			Bluejoint Reedgrass	BJR	FG, GZ, LS, SD, SO	
			Bosioski Wild Rye	BOS	FG, GZ, LS, SD, SO	
			Bottlebrush Squirreltail	BSB	FG, GZ, LS, SD, SO	
			Buffalo	BUF	FG, GZ, LS, SD, SO	
			Buffel	BFF	FG, GZ, LS, SD, SO	
			California (Para)	CAL	FG, GZ, LS, SD, SO	
			California Brome	CFB	FG, GZ, LS, SD, SO	
			California Oat	COG	FG, GZ, LS, SD, SO	
			Canadian Bluegrass	CBG	FG, GZ, LS, SD, SO	
			Canadian Milkvetch	CMV	FG, GZ, LS, SD, SO	
			Canadian Wild Ryegrass	RCW	FG, GZ, LS, SD, SO	

List of Perennial Crops (Continued)

Crop Name	Crop Code	Crop Abbr	Type Name	Type Code	Intended Use	Land Use
Grass (Continued)	0102	GRASS	Canary	CAN	FG, GZ, LS, SD, SO	
			Canby	CBY	FG, GZ, LS, SD, SO	
			Carex (Wildlife Cover)	CAR	FG, GZ, LS, SD, SO	
			Centipede	CEN	FG, GZ, LS, SD, SO	
			Coastal Bermuda	BCS	FG, GZ, LS, SD, SO	
			Colonial Bentgrass	BGC	FG, GZ, LS, SD, SO	
			Common Bermuda	BCM	FG, GZ, LS, SD, SO	
			Creeping Bentgrass	BCR	FG, GZ, LS, SD, SO	
			Crested Wheat	WCR	FG, GZ, LS, SD, SO	
			Dallis	DAL	FG, GZ, LS, SD, SO	
			Deertongue	DER	FG, GZ, LS, SD, SO	
			Dichondra	DCH	FG, GZ, LS, SD, SO	
			Eastern Grama	EAS	FG, GZ, LS, SD, SO	
			Fescue, Chewing	FCH	FG, GZ, LS, SD, SO	
			Fescue, Hard	FSH	FG, GZ, LS, SD, SO	
			Fescue, Meadow	FME	FG, GZ, LS, SD, SO	
			Fescue, Red	FRE	FG, GZ, LS, SD, SO	
			Fescue, Rough	FRO	FG, GZ, LS, SD, SO	
			Fescue, Tall	FTA	FG, GZ, LS, SD, SO	
			Galleta	GAL	FG, GZ, LS, SD, SO	
			Garrison Creeping Fxtl	CFG	FG, GZ, LS, SD, SO	
			Gordo Bluestem	BLG	FG, GZ, LS, SD, SO	
			Gramma, Blue Hachita	GBH	FG, GZ, LS, SD, SO	
			Gramma, Blue Lovington	GBL	FG, GZ, LS, SD, SO	
			Gramma, Hairy	GHA	FG, GZ, LS, SD, SO	
			Gramma, Side Oats	GSO	FG, GZ, LS, SD, SO	
			Green Needle	GNE	FG, GZ, LS, SD, SO	
			Green Panic	GPG	FG, GZ, LS, SD, SO	
			Green Sprangle Top	GST	FG, GZ, LS, SD, SO	
			Guinea	GUI	FG, GZ, LS, SD, SO	
			Hilo	HIL	FG, GZ, LS, SD, SO	
			Hybrid Bermuda	BGH	FG, GZ, LS, SD, SO	
			Idaho Fescue	IDA	FG, GZ, LS, SD, SO	
Illinois Bundle Flower	ILL	FG, GZ, LS, SD, SO				
Indian	ING	FG, GZ, LS, PR, SD, SO				
Indian Ricegrass	IRG	FG, GZ, LS, SD, SO				

Crop Reporting Dates Beginning July 1, 2012, for 2012 and Subsequent Crop Years

A Introduction

This exhibit lists FSA farm program crop reporting dates. The alignment of crop reporting dates is a cooperative effort among multiple USDA agencies.

*--See paragraph 24 for ARD policy and paragraph 27 for late-filed FSA-578 policy.

B List of Crop Reporting Dates Beginning July 1, 2012, for 2012 and Subsequent Crop Years

The following table lists crop reporting dates for farm programs, including NAP. See paragraphs 24 and 27 for exceptions to ARD's and/or late-filed FSA-578 provisions, as--* applicable.

The following table provides crop/commodity reporting dates applicable to all States for applicable program eligibility.

Note: This list of ARD's may not be fully inclusive of every crop/commodity ARD applicable to all States.

States	Crop/Commodity	Date
All	Value-loss and controlled environment crops *--(except nursery).--*	September 30
	CRP.	July 15

Note: The forage seeding referenced in this example means perennial forage seeding.

Crop Reporting Dates Beginning July 1, 2012, for 2012 and Subsequent Crop Years (Continued)

B List of Crop Reporting Dates Beginning July 1, 2012, for 2012 and Subsequent Crop Years (Continued)

The following tables provide crop/commodity reporting dates shown in sequential order (earliest to latest) for a crop year by State.

State	Crop	Date
Alabama	Apiculture, * * * Onions	November 15
	Blueberries, Canola, Rapeseed, Fall Oats, Peaches, Fall Wheat	January 15
	Pecans, Potatoes (Planted 1/1-3/1)	March 15
	Sweet Corn, Potatoes (Planted 3/2-4/15), Tobacco, Tomatoes	May 15
	*--All other crops, Perennial Forage	July 15
Alaska	Fall-Seeded Small Grains	December 15
	All other crops, Perennial Forage	July 15
Arizona	Apiculture, Onions--*	November 15
	Apples, Grapefruit, Lemons, Oranges, Tangelos, Tangerines	January 15
	Pecans, Pistachios, Potatoes, Small Grains	March 15
	--All other crops, Perennial Forage--	July 15
	Grain Sorghum	August 15
Arkansas	* * *	* * *
	Fall-Seeded Small Grains	December 15
	Apples, Grapes, Peaches	January 15
	Tomatoes	May 15
	--All other crops, Perennial Forage--	July 15

Crop Reporting Dates Beginning July 1, 2012, for 2012 and Subsequent Crop Years (Continued)

B List of Crop Reporting Dates Beginning July 1, 2012, for 2012 and Subsequent Crop Years (Continued)

State	Crop	Date
California	Apiculture	November 15
	* * * Onions (Imperial County), Potatoes (see map), Fall Wheat	December 15
	Avocados, Blueberries, Grapefruit, Lemons, Oranges, Potatoes (see map), Strawberries, Sugar Beets (Planted 9/1-12/31), Tangelos, Tangerines	January 15
	Fall Alfalfa Seed, Almonds, Apples, Apricots, Fall Barley, Cherries, Figs, Nectarines, Spring Oats (Planted 10/1-2/15), Olives, Peaches, Pears, Pecans, Plums, Potatoes (see map), Prunes, Walnuts, Wheat (Planted 11/1-2/15)	March 15
	Grapes, Spring Oats (Planted 3/1-4/20), Onions (Fresno, Kern, Monterey, San Benito, and San Joaquin Counties), Potatoes (see map)	May 15
	* * * Potatoes (see map)	June 15
	Spring Alfalfa Seed, Spring Oats (Planted 4/21-5/31), *--Perennial Forage, Onions (all other counties), Potatoes--* (see map), Sugar Beets (Planted 5/1-6/30), Wheat (Planted 3/6-5/31), all other crops.	July 15
	Raisins	July 31
	Potatoes (see map), Strawberries (Ventura County) (Planted 6/15-8/15)	September 15
	See map in subparagraph D for Potatoes	
Colorado	Apiculture, * * * Fall-Seeded Small Grains	November 15
	Apples, Grapes, Peaches	January 15
	Onions	June 15
	--All other crops, Perennial Forage--	July 15

Crop Reporting Dates Beginning July 1, 2012, for 2012 and Subsequent Crop Years (Continued)

B List of Crop Reporting Dates Beginning July 1, 2012, for 2012 and Subsequent Crop Years (Continued)

State	Crop	Date	
Connecticut	Apples, Peaches, Fall-Seeded Small Grains, Grapes	January 15	
	* * *	* * *	
	--All other crops, Perennial Forage--	July 15	
Delaware	Fall-Seeded Small Grains	December 15	
	Peas (Green only), Potatoes	May 15	
	--Perennial Forage, Beans (Limas only), Cucumbers-- (Planted 4/20-6/25 in Kent, Sussex, and New Castle Counties), all other crops	July 15	
	Beans (all types except Limas – planted 4/20-8/10), Cucumbers (Planted 6/26-8/10 in Kent and Sussex Counties)	August 15	
Florida	Sweet Corn (see map), Potatoes (see map)	October 15	
	Apiculture, Cabbage (Planted 9/12-10/31), * * * Tomatoes (see map)	November 15	
	Cabbage (Planted 11/1-12/15), Peppers (see map), Tomatoes (see map)	December 15	
	Atemoya, Avocados, Bananas, Blueberries, Caneberries, Caimito, Cherimoya, Sweet Corn (see map), Dasheen, Guava, Jack Fruit, Mango, Papaya, Passion Fruit, Potatoes (see map), Sapodilla, Sapote, Fall-Seeded Small Grains, Tomatoes (see map)	January 15	
	Peppers (see map), Tomatoes (see map)	February 15	
	Cabbage (Planted 12/16-2/15), Pecans, Peppers (see map), Potatoes (see map), Tomatoes (see map)	March 15	
	Sweet Corn (see map), Grapefruit, Lemons, Limes, Oranges, Tangelos, Tangerines, Tangors, Tomatoes (see map)	April 15	
	Sweet Corn (see map), Tobacco	May 15	
	--All other crops, Perennial Forage--	July 15	
	Sweet Corn (see map), Peppers (see map), Tomatoes (see map)	September 15	
	Peppers (see map), Tomatoes (see map)	October 15	
	See maps in subparagraphs E through H for reporting dates for Sweet Corn, Peppers, Potatoes, and Tomatoes.		

Crop Reporting Dates Beginning July 1, 2012, for 2012 and Subsequent Crop Years (Continued)

B List of Crop Reporting Dates Beginning July 1, 2012, for 2012 and Subsequent Crop Years (Continued)

State	Crop	Date
Georgia	Apiculture * * *	November 15
	Onions (planted 9/20-10/20)	December 15
	Apples, Blueberries, Canola, Peaches, Rye, Rapeseed, Fall-Seeded Small Grainsp	January 15
	Cabbage (planted 10/1-2/20), Onions (planted 10/21-2/1), Pecans	March 15
	Sweet Corn (planted 8/26-5/15), Tobacco, Tomatoes (planted 8/16-4/5)	May 15
	--All other crops, Perennial Forage--	July 15
	Tomatoes (Planted 7/1-8/15)	August 15
	Sweet Corn (Planted 7/15-8/25)	September 15
	Cabbage (Planted 7/16-9/30)	October 15
Hawaii	All other crops	February 15
	Coffee	March 15
	Banana, Papaya	July 15
Idaho	Apiculture	November 15
	Fall Alfalfa Seed, Fall Canola, Fall Mint, Fall-Seeded Small Grains, Lentils, Peas (Austrian, Green, Yellow), Fall Rapeseed * * *	December 15
	Apples, Apricots, Cherries, Grapes, Nectarines, Peaches, Plums	January 15
	--Spring Alfalfa Seed, all other crops, Perennial Forage--	July 15

Crop Reporting Dates Beginning July 1, 2012, for 2012 and Subsequent Crop Years (Continued)

B List of Crop Reporting Dates Beginning July 1, 2012, for 2012 and Subsequent Crop Years (Continued)

State	Crop	Date
Illinois	Fall-Seeded Small Grains, Canola * * *	December 15
	Apples, Asparagus, Blueberries, Caneberries, Cherries, Grapes, Nectarines, Peaches, Pears, Plums, Strawberries	January 15
	Cucumbers (Planted 5/1-5/31 in Gallatin, Lawrence, and White Counties)	June 15
	Cabbage (Planted 3/15-5/31), Cucumbers (all other counties not listed), all other crops, Perennial Forage * * *	July 15
	Cabbage (planted 6/1-7/20)	August 15
	Cucumbers (planted 6/1-8/15 in Gallatin, Lawrence, and White Counties)	September 15
Indiana	Fall Mint, Fall-Seeded Small Grains, and Canola	December 15
	* * *	* * *
	Apples	January 15
	Cucumbers (Planted 5/1-5/31 in Knox County)	June 15
	Cucumbers (Planted 5/10-6/15 in all counties), all *--other crops, Perennial Forage--*	July 15
	Cucumbers (Planted 6/16-8/5 in Fulton, La Porte, Porter, and St. Joseph Counties)	August 15
	Cucumbers (Planted 6/1-8/15 in Knox County)	September 15
Iowa	* * * Fall-Seeded Small Grains	December 15
	--All other crops, Perennial Forage--	July 15
Kansas	Apiculture * * *	November 15
	Fall-Seeded Small Grains	December 15 1/
	--Sesame, all other crops, Perennial Forage--	July 15
<p>1/ Crop acreage reported for purposes of enrollment in the Annual Forage Policy shall be reported by the 12/15 ARD if planted from 7/15 to 12/15 for “Growing Season 1”, or by the 7/15 ARD if planted from 12/15 to 7/15 for “Growing Season 2”.</p> <p>Example: Eligible crops planted and insured under Annual Forage between 7/15/12 and 12/15/12 have an ARD of 12/15/12 (for Growing Season 1), while eligible crops planted between 12/15/12 and 7/15/2013 have an ARD of 7/15/13 (for Growing Season 2).</p>		
Kentucky	Fall-Seeded Small Grains	December 15
	Canola, Peaches	January 15
	* * *	* * *
	--All other crops, Perennial Forage--	July 15

Crop Reporting Dates Beginning July 1, 2012, for 2012 and Subsequent Crop Years (Continued)

B List of Crop Reporting Dates Beginning July 1, 2012, for 2012 and Subsequent Crop Years (Continued)

State	Crop	Date
Louisiana	Fall-Seeded Small Grains	December 15
	Peaches	January 15
	* * *	* * *
	*--All other crops, Perennial Forage	July 15
Maine	Fall-Seeded Small Grains	December 15
	Apples, Blueberries	January 15
	All other crops, Perennial Forage--*	July 15
Maryland	* * * Fall-Seeded Small Grains	December 15
	Apples, Peaches, Grapes	January 15
	* * * Peas (green only), Potatoes	May 15
	Tomatoes	June 15
	Beans (Limas only), Cucumbers (Planted 4/20-6/25 in Caroline, Dorchester, Kent, and Talbot Counties), all *--other crops, Perennial Forage--*	July 15
	Beans (all types except Limas), Cucumbers (planted 6/26-8/10 in Caroline, Dorchester, Kent, and Talbot Counties)	August 15
Massachusetts	Clams, Fall-Seeded Small Grains,	November 30
	Apples, Cranberries, Peaches, Grapes	January 15
	* * *	* * *
	*--All other crops, Perennial Forage	July 15
Michigan	Fall-Seeded Small Grains, Mint--*	November 15
	Apples, Blueberries, Cherries, Grapes, Peaches	January 15
	Beans (Adzuki, Black Turtle, Cranberry, Great Northern, Kidney, Dark Red Kidney, Light Red Kidney, White *--Kidney, Perennial Forage, Pinto, Small Red, Small White/Navy, Tebo, Yellow Eye), Cabbage (Planted 3/31-5/31), Cucumbers (Planted 5/10-6/15), all other--* crops	July 15
	Beans (all other types), Cabbage (Planted 6/1-7/20), Cucumbers (Planted 5/15-7/20 in Arenac, Bay, Gladwin, Gratiot, Ionia, Isabella, Mecosta, Midland, Montcalm, Newaygo, Saginaw, Sanilac, and Tuscola Counties), Cucumbers (Planted 5/10-7/31 in Allegan, Muskegon, and Ottawa Counties), Cucumbers (Planted 6/16-8/5 in St. Joseph County)	August 15

Crop Reporting Dates Beginning July 1, 2012, for 2012 and Subsequent Crop Years (Continued)

B List of Crop Reporting Dates Beginning July 1, 2012, for 2012 and Subsequent Crop Years (Continued)

State	Crop	Date
Minnesota	Apiculture, * * * Fall-Seeded Small Grains	November 15
	Apples	January 15
	Beans (Black Turtle, Great Northern, Dark Red Kidney, Light Red Kidney, White Kidney, Lima, Pea, Pink, *--Pinto, Small White/Navy), Grass Seed, all other crops, Perennial Forage--*	July 15
	Beans (all other types)	August 15
Mississippi	Fall-Seeded Small Grains	December 15
	Blueberries, Grapes, Peaches	January 15
	Pecans	March 15
	* * *	* * *
	*--All other crops, Perennial Forage	July 15
Missouri	Apiculture--*	November 15
	Fall-Seeded Small Grains	December 15
	Apples, Grapes, Peaches	January 15
	Spring Oats, Potatoes	May 15
	*--All other crops, Perennial Forage	July 15
Montana	Apiculture, Fall-Seeded Small Grains	November 15
	Established Stand Alfalfa Seed, Fall Alfalfa Seed, Cherries	January 15
	Spring Alfalfa Seed, all other crops, Perennial Forage--*	July 15

Crop Reporting Dates Beginning July 1, 2012, for 2012 and Subsequent Crop Years (Continued)

B List of Crop Reporting Dates Beginning July 1, 2012, for 2012 and Subsequent Crop Years (Continued)

State	Crop	Date
Nebraska	Apiculture, * * * Fall-Seeded Small Grains	November 15
	Grapes (Lancaster County only)	January 15
	*--All other crops, Perennial Forage	July 15
Nevada	Apiculture	November 15
	Fall-Seeded Small Grains	December 15
	Spring Barley, Onions, Spring Wheat	June 15
	Spring Alfalfa Seed, all other crops, Perennial Forage	July 15
New Hampshire <u>2/</u>	Fall-Seeded Small Grains	November 15
	Apples, Peaches	January 15
	All other crops, Perennial Forage--*	July 15
Change is effective for 2015 and subsequent years.		
New Jersey	* * * Fall-Seeded Small Grains	November 15
	Apples, Blueberries, Cranberries, Peaches, Strawberries, Grapes	January 15
	* * *	* * *
	--All other crops, Perennial Forage--	July 15
	Beans	August 15
New Mexico	Apiculture * * *	November 15
	Fall-Seeded Small Grains	December 15
	Apples	January 15
	Pistachios, Pecans	March 15
	Spring Barley, Onions, Pecans, (Potatoes), Spring Wheat	May 15
	*--All other crops, Perennial Forage, Potatoes (San Juan and all other counties)	July 15
	Beans	August 15
	Potatoes (Curry, Lea, and Roosevelt Counties)--*	May 15
	Potatoes (San Juan)	July 15

Crop Reporting Dates Beginning July 1, 2012, for 2012 and Subsequent Crop Years (Continued)

B List of Crop Reporting Dates Beginning July 1, 2012, for 2012 and Subsequent Crop Years (Continued)

State	Crop	Date
New York	Apiculture, * * * Fall-Seeded Small Grains	November 15
	Apples, Grapes, Peaches	January 15
	*--Onions	June 15 <u>1/</u>
	Beans (Black Turtle, Cranberry, Dark Red Kidney, Light Red Kidney, White Kidney, Pea, Pinto), all other crops, Perennial Forage--*	July 15
	Cabbage, Beans (all other types)	August 15
North Carolina	Apiculture, * * * Clary Sage	November 15
	Apples, Blueberries, Canola, Grapes, Peaches, Fall- Seeded Small Grains, Rapeseed	January 15
	Beans (Planted 3/25-5/8), Cabbage (Planted 2/2-4/20), Potatoes	May 15
	*--Beans (Planted 6/26-7/10), all other crops, Perennial Forage	July 15
	Beans (Planted 7/15-9/5), Cabbage (Planted 7/15-9/5)	September 15
North Dakota	Apiculture, Fall-Seeded Small Grains	November 15 <u>1/</u>
	Grass Seed, all other crops, Perennial Forage	July 15
Ohio	Fall-Seeded Small Grains	December 15
	Apples, Grapes	January 15
	Cabbage (Planted 3/19-5/31), all other crops, Perennial Forage--*	July 15
	Cabbage (Planted 6/1-7/20)	August 15

1/ The date change for spring forage seeding is effective for the 2020 crop year.

Crop Reporting Dates Beginning July 1, 2012, for 2012 and Subsequent Crop Years (Continued)

B List of Crop Reporting Dates Beginning July 1, 2012, for 2012 and Subsequent Crop Years (Continued)

State	Crop	Date
Oklahoma	Apiculture * * *	November 15
	Canola, Peaches, Fall-Seeded Small Grains	January 15
	Pecans	March 15
	Spring Oats, Potatoes	May 15
	*--All other crops, Perennial Forage	July 15
Oregon	Apiculture	November 15
	Fall Alfalfa Seed, Fall Canola, Fall Mint, Onions (Planted 8/15-9/15), Fall-Seeded Small Grains--*	December 15
	Apples, Apricots, Blueberries, Cherries, Cranberries, Grapes, Nectarines, Peaches, Pears, Plums	January 15
	Cabbage (Planted 3/12-4/20)	May 15
	Spring Alfalfa Seed, Cabbage (Planted 4/21-6/10), *--Onions (Planted 2/15-5/15), all other crops, Perennial Forage--*	July 15
	Cabbage (Planted 6/11-8/10)	August 15
Pennsylvania	Apiculture, * * * Fall-Seeded Small Grains	November 15
	Apples, Grapes, Peaches, Pears	January 15
	Spring Barley, * * * Spring Oats, Rye, Triticale, Spring Wheat	June 15
	--All other crops, Perennial Forage--	July 15
	Beans, Cabbage	August 15

Crop Reporting Dates Beginning July 1, 2012, for 2012 and Subsequent Crop Years (Continued)

B List of Crop Reporting Dates Beginning July 1, 2012, for 2012 and Subsequent Crop Years (Continued)

State	Crop	Date
Puerto Rico	All crops	15 calendar days before the onset of harvest.
Rhode Island	Apples, Cranberries, Grapes, Peaches, Fall-Seeded Small Grains	January 15
	* * *	* * *
	*--All other crops, Perennial Forage	July 15
South Carolina	Apiculture--*	November 15
	Clams	November 30
	Apples, Blueberries, Canola, Peaches, Fall-Seeded Small Grains	January 15
	Tomatoes (Planted 3/15-4/30)	May 15
	*--All other crops, Perennial Forage	July 15
	Tomatoes (Planted 7/1-7/15)	August 15
South Dakota	Apiculture, Fall-Seeded Small Grains	November 15
	All other crops, Perennial Forage	July 15
Tennessee	Fall-Seeded Small Grains	December 15
	Apples, Canola, Peaches	January 15
	All other crops, Perennial Forage--*	July 15
	Beans	August 15

Crop Reporting Dates Beginning July 1, 2012, for 2012 and Subsequent Crop Years (Continued)

B List of Crop Reporting Dates Beginning July 1, 2012, for 2012 and Subsequent Crop Years (Continued)

State	Crop	Date	
Texas	Apiculture, Cabbage (Planted 9/1-10/15) * * *	November 15	
	Cabbage (Planted 10/16-12/15), Canola, Grapes, Grapefruit, Fall Oats (Planted 8/1-12/15), Fall Barley (see map), Fall Wheat (see map), Onions (Planted 9/15-12/31), Oranges, Peaches, Sugarcane	January 15	
	Fall Barley (see map), Fall Wheat (see map), Rye (see map), Triticale (see map)	February 1	
	Pecans	March 15	
	Spring Barley, Beans (all other types not listed, planted on or before 5/10) <u>1</u> /, Corn (see map), Cotton (see map), Sorghum (see map), Spring Oats, Onions (Planted 1/1-3/31), Potatoes (Planted 12/10-3/31), Sunflowers (see map), Sugarcane	May 15	
	Beans (Pinto, Blackeye), Corn (see map), Cotton (see *--map), Peanuts, Perennial Forage, Potatoes (Planted--* 4/1-5/15), Sorghum (see map), Sunflowers (see map), all other crops	July 15	
	Beans (all other types not listed, planted on or before 7/20) <u>2</u> /, Peanuts	August 15	
	Cabbage (Planted 7/15-8/31)	September 15	
	See maps in subparagraphs C and I for reporting dates for Corn, Cotton, Fall Barley, Fall Wheat, Rye, Sorghum, Sunflowers, and Triticale.		
	Example: Eligible crops planted and insured under Annual Forage between 7/15/12 and 12/15/12 have an ARD of 12/15/12 (for Growing Season 1), while eligible crops planted between 12/15/12 and 7/15/2013 have an ARD of 7/15/13 (for Growing Season 2).		

1/ The May 15 date for reporting processing beans applies to Frio and Uvalde counties only.

2/ The August 15 date for reporting processing beans applies to Bailey, Lamb, and Parmer counties only.

Crop Reporting Dates Beginning July 1, 2012, for 2012 and Subsequent Crop Years (Continued)

B List of Crop Reporting Dates Beginning July 1, 2012, for 2012 and Subsequent Crop Years (Continued)

State	Crop	Date
Utah	Apiculture	November 15
	* * * Fall-Seeded Small Grains	December 15
	Apples, Cherries, Peaches	January 15
	* * *	* * *
	*--Alfalfa Seed, all other crops, Perennial Forage	July 15
Vermont	Fall-Seeded Small Grains	November 15
	Apples, Peaches	January 15
	All other crops, Perennial Forage	July 15
Virginia	Apiculture--*	November 15
	Clams	November 30
	Apples, Peaches, Fall-Seeded Small Grains, Canola, Grapes	January 15
	Cabbage (Planted 3/16-4/15), Spring Oats, Potatoes, Tomatoes (Planted on or before 5/15)	May 15
	Beans (Planted 3/4-5/25)	June 15
	Beans (Planted 5/26-7/10), Tomatoes (Planted 5/16-7/5), *--Tomatoes, all other crops, Perennial Forage--*	July 15
	Cabbage (Planted 4/16-7/10)	August 15
	Beans (Planted 7/15-9/5)	September 15

Crop Reporting Dates Beginning July 1, 2012, for 2012 and Subsequent Crop Years (Continued)

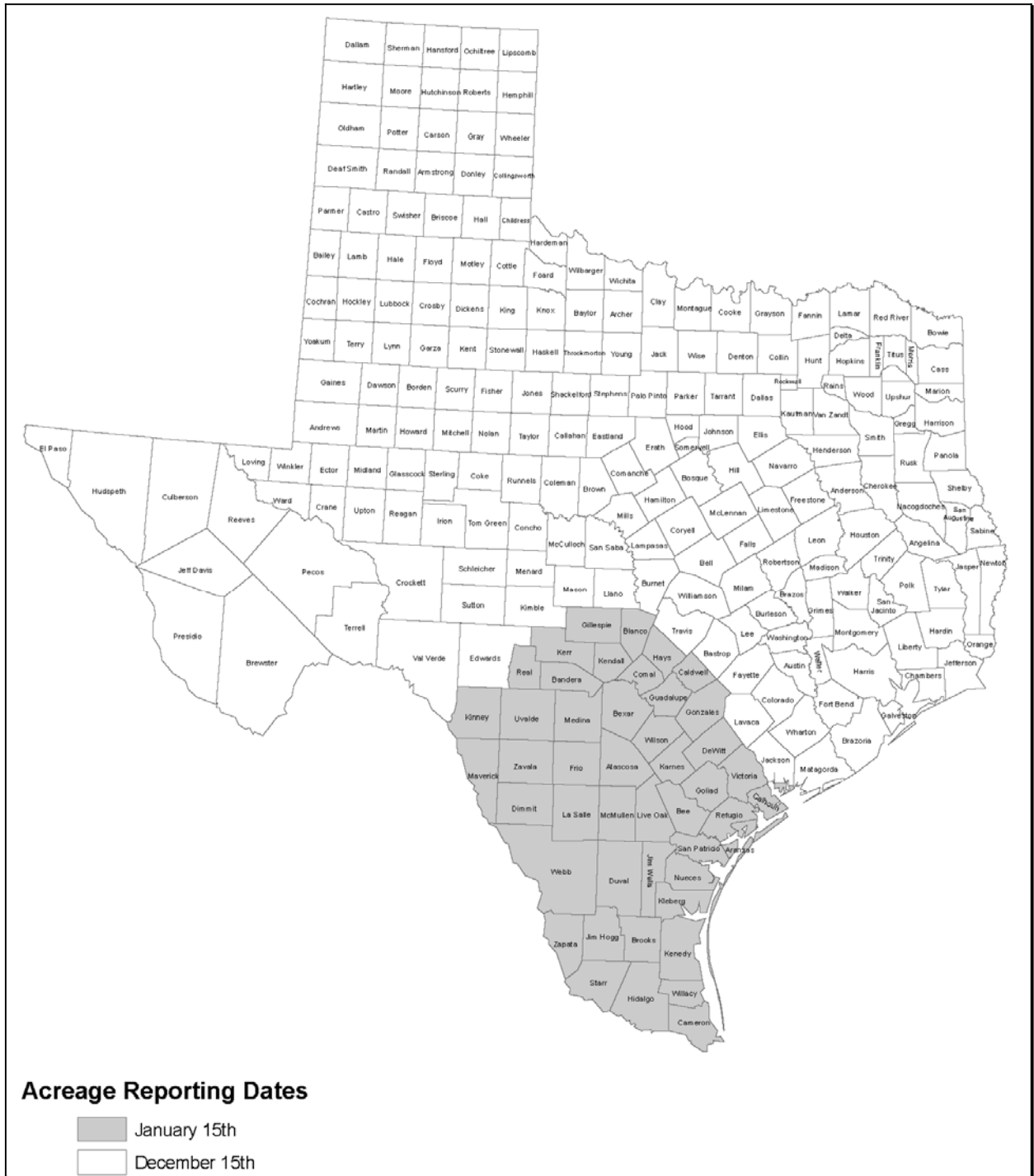
B List of Crop Reporting Dates Beginning July 1, 2012, for 2012 and Subsequent Crop Years (Continued)

State	Crop	Date
Washington	Fall Alfalfa Seed, Fall Canola, Fall Mint, Onions (Planted 8/15-9/15), Peas (Fall Austrian, Fall Green, Fall Yellow Variety), Fall Lentils, Fall-Seeded Small Grains * * *	December 15
	Apples, Apricots, Blueberries, Cherries, Cranberries, Grapes, Nectarines, Peaches, Pears, Plums	January 15
	Cabbage (Planted 3/1-4/20)	May 15
	Spring Alfalfa Seed, Cabbage (Planted 4/21-6/10), *--Onions (Planted 3/14-4/20), all other crops, Perennial Forage--*	July 15
	Buckwheat, Cabbage (Planted 6/11-8/10)	August 15
West Virginia	Fall-Seeded Small Grains	December 15
	* * *	* * *
	Apples, Peaches	January 15
	--All other crops, Perennial Forage--	July 15
Wisconsin	* * * Fall Mint, Fall-Seeded Small Grains	November 15
	Apples, Caneberries, Cherries, Cranberries, Currants, Hops, Huckleberries, Pears, Strawberries	January 15
	Beans (Dark Red Kidney, Light Red Kidney), all other *--crops, Perennial Forage--*	July 15
	Beans (all other types not listed), Cabbage	August 15
Wyoming	Apiculture, * * * Fall-Seeded Small Grains	November 15
	Established Stand Alfalfa Seed, Fall Alfalfa Seed	January 15
	--Spring Alfalfa Seed, all other crops, Perennial Forage--	July 15

Crop Reporting Dates Beginning July 1, 2012, for 2012 and Subsequent Crop Years (Continued)

C ARD's for Fall Barley, Fall Wheat, Rye, and Triticale in Texas for 2014 Crop Year

Following is a map of the Texas fall barley, rye, triticale, and fall wheat ARD's for farm programs.



2003 and Subsequent Year Crops Reported on FSA-578

The following lists the crop names, crop codes, abbreviations, intended uses, and land uses for crops and commodities reported on FSA-578.

Notes: Except for sorghum, crops historically reported with intended uses of “Silage” (SG), “Haying” (HY), “Green Chop” (GC), or “Haylage” (HG) shall now be reported with an intended use of “FG”.

Hybrid seed shall be reported as the intended use of “Seed” (SD) associated to the applicable crop.

When a small grain crop is planted and had 2 intended uses of grain and grazing, the intended use of Grain/Grazing (GS) shall be used.

In SAP/CRM, crop and type combinations will be represented as a single “product”.

Example: Apple, Common and Apple, Specialty are 2 different products found within Product Master. Also, the FSA crop and type codes will be included in Product Master as “CVS crop and type”, such as “0054-COM” and “0054-SPC”.

Note: For 2017 and subsequent years, the “cover only” (CO) intended use was replaced with “cover crop”.

Crop Name	Crop Code	Crop Abbr	Type Name	Type Code	Intended Use	Land Use
Acerola (Barbados Cherry)	0172	AZARL			FH	F
Alfalfa	0027	ALFAL			CO, FG, GZ, LS, SD	
Algae	3003	ALGAE	Ogo (Red)	OGO	FH, PR	
Almonds	0028	ALMND			Blank	F
Aloe Vera	9032	ALOEV			SD or blank	
Amaranth Grain	0516	AMAGR			GR	
Ambrosia	0520	AMBRO			PR	
Antidesma	1165	ANTID			FH	F
Apples	0054	APPLE	Common	COM	FH, JU, PR, RS, LS	F
			Specialty	SPC	FH, JU, PR, RS	F
Note: The type “SPC - Specialty” includes, but may not be limited to: Ambrosia, Aurora Golden Gala, Braeburn, Cameo, Cortland, Crispin, Empire, Fuji, Gala, Golden Supreme, Honeycrisp, Jazz, Jonagold, Macoun, McIntosh, Ozark Gold, Pink Lady (Cripps Pink), Red Rome, Sommerfeld, Sweetango/Minneiska. All other types are considered “COM -Common”.						
Apricots	0326	APRCT			FH, PR, RS	F
Aronia (Chokeberry)	0143	ARONI			FH, JU, PR	F
Artichokes	0458	ARTIC			FH, PR, SD	F
Arundo	1305	ADONX			PR	
Asparagus	0104	ASPRG			FH, PR, RS, SD	F

2003 and Subsequent Year Crops Reported on FSA-578 (Continued)

Crop Name	Crop Code	Crop Abbr	Type Name	Type Code	Intended Use	Land Use
Atemoya (Custard Apple)	0997	ATMYA			FH, PR	F
Avocados	0106	AVOCD			FH, PR	F
Bamboo Shoots	0111	BAMBO			FH, PR	F
Bananas	0173	BANAN	Baby	BAB	FH, LV, PR	F
			Bluefield	BFB	FH, LV, PR	F
			Brazilian	BRZ	FH, LV, PR	F
			Cavendish	CVB	FH, LV, PR	F
			Johnson	JON	FH, LV, PR	F
			Thai	THA	FH, LV, PR	F
Barley	0091	BARLY	Spring Barley	SPR	*--FG, GM, GR, GZ, LS, SD	
			Winter Barley	WTR	FG, GM, GR, GZ, LS, SD--*	
Beans (exempt from FAV)	0047	BEANS	Adzuki	ADZ	DE, SD	
			Castor	CAS	DE, SD	
			Lupine	LUP	DE, SD	
			Mung	MUN	DE, FG, SD	
Beans	0047	BEANS	Anasazi	ANA	FG, GM	
			Anasazi	ANA	DE, FH, PR, SD	F
			Baby Lima	BBL	FG, GM	
			Baby Lima	BBL	DE, FH, PR, SD	F
			Black Turtle	BTU	FG, GM	
			Black Turtle	BTU	DE, FH, PR, SD	F
			Butter	BUT	FG, GM	
			Butter	BUT	DE, FH, PR, SD	F
			Canario - Yellow	CAN	FG, GM	
			Canario - Yellow	CAN	DE, FH, PR, SD	F
			Chinese String	CHI	FG, GM	
			Chinese String	CHI	DE, FH, PR, SD	F
			Cranberry	CRA	FG, GM	
			Cranberry	CRA	DE, FH, PR, SD	F
			Dark Red Kidney	DRK	FG, GM	
			Dark Red Kidney	DRK	DE, FH, PR, SD	F
			Fava	FAV	FG, GM	
			Fava	FAV	DE, FH, PR, SD	F
			Flat Small White	FSW	FG, GM	
			Flat Small White	FSW	DE, FH, PR, SD	F
Garbanzo, Small Desi (Chickpeas)	GAD	DE, FG, FH, GM, PR, SD				

2003 and Subsequent Year Crops Reported on FSA-578 (Continued)

Crop Name	Crop Code	Crop Abbr	Type Name	Type Code	Intended Use	Land Use
Broccoli	0110	BRCLI			FH, PR, SD, SE	F
Broccolo-Cavalo	7073	BRCXC			FH, PR, RS, SD	F
Brussel Sprouts	0112	BRUSL			FH, PR, SD	F
Buckwheat	0114	BUKWT			GM, GR, SD	
Cabbage	0116	CABAG	Choy Sum Cabbage	CHO	FH, PR, SD, SE	F
			Hybrid Cabbage	HYB	FH, PR, SD, SE	F
			Napa Cabbage	NAP	FH, PR, SD, SE	F
			Open Pollinated	OPN	FH, PR, SD, SE	F
			Red Cabbage	RED	FH, PR, SD, SE	F
			Savoy	SAV	FH, PR, SD, SE	F
--Cacao	0182	CACAO			FH, PR, SD	F--
Cactus	2050	CACTS			FH	
Caimito	1166	CAMTO			FH, PR	F
Calabaza Melon	9999	CALAB			FH	F
Calaloo	9056	CALAL			FH	F
Camelina	0033	CAMEL	Camelina		PR, SD	
Canary Melon	9998	CANAR			FH, SD	F
Canary Seed	9039	CNRSD			SD	
Caneberries	6000	CANBR	Apache Blackberries	APC	FH, PR	F
			Arapaho Blackberries	ARA	FH, PR	F
			Black Raspberries	BLK	FH, PR	F
			Boysenberries	BOY	FH, PR	F
			Cascadeberries	CAS	FH, PR	F
			Chester Blackberries	CHT	FH, PR	F
			Chickasaw Blackberries	CHI	FH, PR	F
			Doyle Blackberries	DOY	FH, PR	F
			Evergreen Blackberries	EVG	FH, PR	F
			Kiowa/Ouachita Blackberries	KIO	FH, PR	F
			Kotata Blackberries	KOT	FH, PR	F
			Loganberries	LOG	FH, PR	F
			Marionberries	MAR	FH, PR	F
			Natchez Blackberries	NAT	FH, PR	F
			Navaho Blackberries	NAV	FH, PR	F
			Olallieberries	OLA	FH, PR	F
			Prime Ark 45	PAK	FH, PR	F
			Prime Jan	PJA	FH, PR	F
			Prime Jim	PJI	FH, PR	F
			Red Raspberries	RED	FH, PR	F
			Tayberries	TAY	FH, PR	F
Triple Crown Blackberries	TRI	FH, PR	F			

2003 and Subsequent Year Crops Reported on FSA-578 (Continued)

Crop Name	Crop Code	Crop Abbr	Type Name	Type Code	Intended Use	Land Use
Canistel	9057	CANIS			FH	F
Canola	0711	CANOL	Fall Seeded	FAL	FG, SD, GR, PR	
			Spring Canola	SPR	FG, SD, GR, PR	
Cantaloupes	0759	CANTL			FH, SD	F
Carambola (Star Fruit)	0999	CRMBA			FH	F
--Cardoon	0183	CARDO			FH, PR, SD	F--
Carob	0494	CAROB			PR	F
Carrots	0120	CARRT	Hybrid	HYB	FH, PR, SD	F
			Mini Carrots	MNE	FH, PR, SD	F
			Open Pollinated	OPN	FH, PR, SD	F
Casaba Melon	9997	CASAS			FH	F
Cashew	1291	CASHE			Blank	F
Cassava	0174	CASAV	Beige	BGE	FH	F
			White	WHT	FH	F
Cauliflower	0124	CLFLW			FH, PR, SD	F
Celeriac	0509	CLERI			FH, PR, SD	F
Celery	0126	CLERY			FH, PR, SD	F
Cherimoya (Sugar Apple)	8045	CHRMY			FH	F
Cherries	0128	CHERY	Chokecherry	CHK	FH, PR	F
			Jamaica	JAM	FH, PR	F
			Sweet	SWT	FH, PR	F
			Tart	TRT	FH, PR	F
Chestnuts	0375	CHENT			FH or blank	F
Chia	0840	CHIA			FH, GR, PR, SD	
Chickpea (see Beans, Garbanzo)						
Chicory/Radicchio	0511	CHICO	Common	COM	FG, GZ	
			Common	COM	FH, RS, SD	F
			Root	ROT	PR	
			Witloof	WIT	FG, GZ	
			Witloof	WIT	FH, RS, SD	F

2003 and Subsequent Year Crops Reported on FSA-578 (Continued)

Crop Name	Crop Code	Crop Abbr	Type Name	Type Code	Intended Use	Land Use
Chinese Bitter Melon	9996	CHIBT			FH	F
Christmas Trees	7321	CHRUT	Afghan Pine	AFG	FH, RS	
			Arizona Cypress	ARI	FH, RS	
			Austrian Pine	AUS	FH, RS	
			Balsam Fir	BAL	FH, RS	
			Blue Spruce	BLU	FH, RS	
			Canaan Fir	CAN	FH, RS	
			Carolina Sapphire	CAR	FH, RS	
			Colorado Blue Spruce	COL	FH, RS	
			Concolor Fir	CON	FH, RS	
			Douglas	DOU	FH, RS	
			Engelman Spruce	ENG	FH, RS	
			Frasier Fir	FRA	FH, RS	
			Grand Fir	GRD	FH, RS	
			Korean Fir	KOR	FH, RS	
			Leyland	LEY	FH, RS	
			Meyer Spruce	MEY	FH, RS	
			Noble Fir	NOB	FH, RS	
			Nordman Fir	NRD	FH, RS	
			Norway Pine/Red Pine	NRP	FH, RS	
			Norway Spruce	NOR	FH, RS	
Red Cedar	RED	FH, RS				
Scotch Pine	SCO	FH, RS				
Serbian Spruce	SER	FH, RS				
Va Pine	VAP	FH, RS				
White Pine	WPN	FH, RS				
White Spruce	WHT	FH, RS				
Chufes	0645	CHUFS			SD	F
Cinnamon	1298	CINNA			Blank	
Citron Melon	9995	CTRON			FH	F
Clover	0265	CLOVR	Alsike Clover	ALS	FG, GM, GZ, SD	
			Alyce Clover	ALC	FG, GM, GZ, SD	
			Arrowhead Clover	AHD	FG, GM, GZ, SD	
			Arrowleaf	ARL	FG, GM, GZ, SD	
			Ball Clover	BAL	FG, GM, GZ, SD	
			Berseem Clover	BER	FG, GM, GZ, SD	
			Crimson Clover	CRM	FG, GM, GZ, SD	
			Kura Clover	KUR	FG, GM, GZ, SD	
			Mammoth Clover	MAM	FG, GM, GZ, SD	
			Purple Prairie	PPR	FG, GM, GZ, SD	
			Red Clover	RED	FG, GM, GZ, SD	
			Sub Clover	SUB	FG, GM, GZ, SD	
			White Clover	WHT	FG, GM, GZ, SD	
			Yellow	YEL	FG, GM, GZ, SD	

2003 and Subsequent Year Crops Reported on FSA-578 (Continued)

Crop Name	Crop Code	Crop Abbr	Type Name	Type Code	Intended Use	Land Use
Coconuts	0175	COCON			FH	F
Coffee	0176	COFFE	Arabica	ARA	PR	F
			Liberica	LIB	PR	F
			Robusta Coffee	ROB	PR	F
Conservation Stewardship Program	0097	CSP				
Corn	0041	CORN	Amylose	AMY	*--GR, GZ, LS, PR, SD, SG	
			Blue	BLU	GR, GZ, LS, SG	
			Blue	BLU	FH, PR, SD, SG	F
			Corn Nuts	NUT	FH, PR, SD, SG	F
			Grainless Forage	GLF	GZ, SG	
			High Amylase	AMA	GR, GZ, SD, SG	
			Ornamental	ORN	FH, GR, GZ, LS, PR, SD, SG	
			Popcorn	POP	FH, GR, GZ, LS, PR, SD, SG	
			Red	RED	GR, GZ, LS, SG	
			Strawbery Popcorn	PSN	FH, GR, GZ, LS, PR, SD, SG	
			Sweet, Bicolor	SBI	FH, PR, SD, SG	F
			Sweet, Bicolor	SBI	GR, GZ, LS, SG	
			Sweet, White	SWH	FH, PR, SD, SG	F
			Sweet, White	SWH	GR, GZ, LS, SG	
			Sweet, Yellow/Golden Early	SYE	FH, PR, SD, SG	F
			Sweet, Yellow/Golden Early	SYE	GR, GZ, LS, SG	
			Sweet, Yellow/Golden Late	SYL	FH, PR, SD, SG	F
			Sweet, Yellow/Golden Late	SYL	GR, GZ, LS, SG	
			Tropical	TRO	FH, GR, GZ, LS, PR, SD, SG	
			Waxy	WXY	GR, GZ, LS, SD, SG	
White	WHE	GR, GZ, LS, SD, SG				
Yellow	YEL	GR, GZ, LS, SD, SG--*				
<p>Notes: For 2016 and prior crop years, sweet corn is reported as the type "Sweet" (SWT). For 2017 and subsequent years, Sweet corn is reported as the types listed above.</p> <p>For 2017 and subsequent years, yellow varieties of sweet corn requiring 76 or fewer days to maturity shall be reported as "Sweet, Yellow/Golden Early" (SYE) type, while yellow varieties requiring 77 or more days to maturity shall be reported as "Sweet, Yellow/Golden Late" (SYL) type.</p>						
Cotton, ELS	0022	ELSCN			Blank	
Cotton, Upland	0021	UPCN			Blank	
Cover Crop	0319	COVRC	Brassicas and other Broadleaves	BOB	CO	
			Cereals and other Grasses	CEG	CO	
			Legumes	LUM	CO	
			Mixtures	MIX	CO	
Crambe (Colewort)	0714	CRAMB			GR, SD	
Cranberries	0058	CRNBR			FH PR	F
Crenshaw Melon	9994	CRENS			FH SD	F

2003 and Subsequent Year Crops Reported on FSA-578 (Continued)

Crop Name	Crop Code	Crop Abbr	Type Name	Type Code	Intended Use	Land Use
Flowers (Continued)	7501	FLOWR	Stock	STC	ED, FH, OL, SD, SE	
			Strawflowers	STW	ED, FH, OL, SD, SE	
			Sunflowers	SUN	ED, FH, OL, SD, SE	
			Swamp Milkweed	SWM	ED, FH, OL, SD, SE	
			Sweet Annie	SWA	ED, FH, OL, SD, SE	
			Sweet Pea	SWP	ED, FH, OL, SD, SE	
			Sweet William	SWW	ED, FH, OL, SD, SE	
			Tansy	TAN	ED, FH, OL, SD, SE	
			Thistle Globe	THG	ED, FH, OL, SD, SE	
			Tigridia	TIG	ED, FH, OL, SD, SE	
			Trachelium	TRA	ED, FH, OL, SD, SE	
			Tritoma	TRI	ED, FH, OL, SD, SE	
			Tuberose	TUB	ED, FH, OL, SD, SE	
			Tulip	TUL	ED, FH, OL, SD, SE	
			Umbrella Plant	UMB	ED, FH, OL, SD, SE	
			Verbena	VRB	ED, FH, OL, SD, SE	
			Veronica	VER	ED, FH, OL, SD, SE	
			Water Hyacinth	WAT	ED, FH, OL, SD, SE	
			Waxflower	WAX	ED, FH, OL, SD, SE	
			Wild Gyp	WLD	ED, FH, OL, SD, SE	
Wildflowers	WIL	ED, FH, OL, SD, SE				
Wood Lilies	WOD	ED, FH, OL, SD, SE				
Xeranthemum	XER	ED, FH, OL, SD, SE				
Yarrow	YAR	ED, FH, OL, SD, SE				
Zinnia	ZIN	ED, FH, OL, SD, SE				
Forage Soybean/Sorghum	0125	FORSS			FG, GZ	
Gailon/Gai Lein /Chinese Broccoli	0953	GALON			FH, PR, RS, SD	
Galanga	7041	GALAX			FH, PR, RS, SD	F
Garden, Commercial	0773	CMGRD			Blank	F
Garden, Home	0772	HMGRD			Blank	
Garlic	0423	GARLC	Common	COM	FH, PR, SD	
			Elephant Garlic	ELE	FH, PR, SD	
Genip	1292	GENIP			FH	F
Ginger	0178	GINGR			FH, PR, SD	
Ginseng	0089	GINS			FH, SD	
Gooseberries	0424	GOOBR			FH, PR	F

2003 and Subsequent Year Crops Reported on FSA-578 (Continued)

Crop Name	Crop Code	Crop Abbr	TYNE Name	Type Code	Intended Use	Land Use
Gourds	0322	GORDS	Chinese Okra	OKR	FH, PR, SD	F
			Common	COM	FH, PR, SD	
			Indian	IND	FH, PR, SD	
			Ornamental	ORN	FH, PR, SD	
Grapefruit	0030	GFRUT	Rio Red/Star Ruby	SRJ	FH, JU, PR	F
			Ruby Red	RRJ	FH, JU, PR	F
			Seedy	SDY	FH, JU, PR	F
			White	WHT	FH, JU, PR	F
Grapes	0053	GRAPE	Adalina	ADA	FH, PR	F
			--Aglianico--	AGL	FH, PR	F
			Albarino	ABR	FH, PR	F
			Alborz	ABZ	FH, PR	F
			Alicante-Bouschet	ALB	FH, PR	F
			Almeria	ALM	FH, PR	F
			Aurora	AUR	FH, PR	F
			Autumn King	AYJ	FH, PR	F
			Autumn Royal	AUT	FH, PR	F
			Baco Noir	BAC	FH, PR	F
			--Barbera--	BAR	FH, PR	F
			Beauty Seedless	BTY	FH, PR	F
			Beta	BTA	FH, PR	F
			Black Corinth/Zante Current	BLZ	FH, PR	F
			Black Mission	BLM	FH, PR	F
			Black Seedless	BLA	FH, PR	F
			Black Spanish/Lenoir	BSL	FH, PR	F
			Blanc Dubois	BDB	FH, PR	F
			Blanc Seedless	BLN	FH, PR	F
			Bluebell	BLU	FH, PR	F
			Brianna	BRI	FH, PR	F
			Buffalo/Rubiana	BUF	FH, PR	F
			Burger	BUR	FH, PR	F
			Cabernet	CAB	FH, PR	F
			Cabernet Franc	CBF	FH, PR	F
			Cabernet Pfeffer	CPF	FH, PR	F
			Cabernet Sauvignon	CBS	FH, PR	F
			Calmeria	CAL	FH, PR	F
			--Campbell Early--	CAM	FH, PR	F
			Canadice	CAD	FH, PR	F
			Cardinal	CDR	FH, PR	F
			Carignane	CAR	FH, PR	F
			Carmenet	CRM	FH, PR	F
Carnelian	CAN	FH, PR	F			
Carmine	CMN	FH, PR	F			
Cascade	CAC	FH, PR	F			
Castel	CAS	FH, PR	F			
Catawba	CAT	FH, PR	F			
Cayuga	CAY	FH, PR	F			

2003 and Subsequent Year Crops Reported on FSA-578 (Continued)

Crop Name	Crop Code	Crop Abbr	Type Name	Type Code	Intended Use	Land Use
Grapes (Continued)	0053	GRAPE	Chambourcin	CMB	FH, PR	F
			Chancellor	CHN	FH, PR	F
			Chardone1	CHD	FH, PR	F
			Chardonnay	CHA	FH, PR	F
			Chelois	CHE	FH, PR	F
			Chenin Blanc	CHB	FH, PR	F
			Christmas Rose	CHR	FH, PR	F
			Cinsaut	CIN	FH, PR	F
			Clinton	CLI	FH, PR	F
			Colobel	COB	FH, PR	F
			Columbard French	COL	FH, PR	F
			Concord	CON	FH, PR	F
			Corot Noir	CRN	FH, PR	F
			Corvina	COR	FH, PR	F
			Counoise	COS	FH, PR	F
			Courduric	COU	FH, PR	F
			Crimson	CRI	FH, PR	F
			--Crimson Pearl	CPL	FH, PR	F--
			Crimson Seedless	CSL	FH, PR	F
			Cynthia	CYN	FH, PR	F
			Cynthiana	CYT	FH, PR	F
			Dechaunac	DEC	FH, PR	F
			Delaware	DEL	FH, PR	F
			Diamond	DIA	FH, PR	F
			Dolcetto	DOL	FH, PR	F
			Dornfelder	DRN	FH, PR	F
			Dutchess	DUT	FH, PR	F
			Edelweiss	EDE	FH, PR	F
			Einsett	EIN	FH, PR	F
			Elvira	ELV	FH, PR	F
			Emerald Riesling	EMR	FH, PR	F
			Emerald Seedless	EMS	FH, PR	F
			Emperors	EPP	FH, PR	F
			Espirit	ESP	FH, PR	F
			Exotic	EXT	FH, PR	F
			Fantasy	FAN	FH, PR	F
			Fiano	FNO	FH, PR	F
			Fiesta	FST	FH, PR	F
			Flame Seedless	FLS	FH, PR	F
			Flora	FLR	FH, PR	F
			Foch	FOC	FH, PR	F
			Fosch	FOS	FH, PR	F
			Fredonia	FRE	FH, PR	F
Frontenac	FRO	FH, PR	F			
Frontenac Gris	FRG	FH, PR	F			
Gamay/Napa Gamay	GAM	FH, PR	F			
Gamay Beaujolais	GAB	FH, PR	F			
Geneva Red #7	GEN	FH, PR	F			
Gewürztraminer	GEW	FH, PR	F			

2003 and Subsequent Year Crops Reported on FSA-578 (Continued)

Crop Name	Crop Code	Crop Abbr	Type Name	Type Code	Intended Use	Land Use
Grapes (Continued)	0053	GRAPE	Green Hungarian	GRH	FH, PR	F
			Grenache	GRE	FH, PR	F
			Grenache Blanc	GRB	FH, PR	F
			Grey Riesling	GRY	FH, PR	F
			Gruener Veltliner	GRV	FH, PR	F
			Himrod	HIM	FH, PR	F
			Isabella	ISA	FH, PR	F
			Italia	ITA	FH, PR	F
			--Itasca	ITS	FH, PR	F--
			Ives	IVE	FH, PR	F
			Jupiter	JPT	FH, PR	F
			Kashishi	KSH	FH, PR,	F
			Kay Gray	KAY	FH, PR	F
			Kerner	KER	FH, PR	F
			King Of The North	KON	FH, PR	F
			Kyoho	KYO	FH, PR	F
			Lacrescent	LCT	FH, PR	F
			Lacrosse	LAC	FH, PR	F
			Lakemont	LAK	FH, PR	F
			Landot Noir	LDN	FH, PR	F
			Lemberger	LEM	FH, PR	F
			Leon Millot/Millot	LEO	FH, PR	F
			Louise Swenson	LOU	FA, PR	F
			Malbec	MAL	FH, PR	F
			Malvasia Bianca	MAB	FH, PR	F
			Malvoisie Black	MSB	FH, PR	F
			--Marechal Foch--	MAC	FH, PR	F
			Marque	MAR	FH, PR	F
			Marquette	MRQ	FH, PR	F
			Mars	MAS	FH, PR	F
			Marsanne	MRS	FH, PR	F
			Mataro/Mourvedre	MAT	FH, PR	F
			Melody	MDY	FH, PR	F
			Melon	MEL	FH, PR	F
			Meriot	MRT	FH, PR	F
			Merlot	MER	FH, PR	F
			Meunier	MEU	FH, PR	F
			Meyers	MYR	FH, PR	F
			Midnight Beauty/Sugrathirteen	MBS	FH, PR	F
			Mission	MIS	FH, PR	F
			Missouri Riesling	MOR	FH, PR	F
			Mullerthurgau	MUL	FH, PR	F
			Muscadine	MUS	FH, PR	F
Muscat	MUC	FH, PR	F			
Muscat Blanc/M. Canelli	MUB	FH, PR	F			
Muscat Hamburg	MUH	FH, PR	F			
Muscat Of Alexander	MUA	FH, PR	F			
Muscat Ottonel	MUO	FH, PR	F			
Muscat, Golden	MUG	FH, PR	F			

2003 and Subsequent Year Crops Reported on FSA-578 (Continued)

Crop Name	Crop Code	Crop Abbr	Type Name	Type Code	Intended Use	Land Use
Grapes (Continued)	0053	GRAPE	Nebbiolo	NEB	FH, PR	F
			Neptune	NEP	FH, PR	F
			--Negroamaro--	NGA	FH, PR	F
			Niagara	NIA	FH, PR	F
			Noiret	NWA	FH, PR	F
			Norton	NOR	FH, PR	F
			Ny76.0844.24	NYA	FH, PR	F
			Palomino Chasselas	PGC	FH, PR	F
			Payon Dor	PAY	FH, PR	F
			Perlette	PER	FH, PR	F
			Persian Gulf	PGF	FH, PR	F
			Petit Manseng	PTM	FH, PR	F
			Petita Sirah	PES	FH, PR	F
			Petite Amie	PAM	FH, PR	F
			*--Petite Pearl	PPL	FH, PR	F
			Petite Verdot--*	PEV	FH, PR	F
			Pinot Blanc	PTB	FH, PR	F
			Pinot Blanc (Sparkling Wine)	PTC	FH, PR	F
			Pinot Gris	PGR	FH, PR	F
			Pinot Gris (Sparkling Wine)	PGS	FH, PR	F
			Pinot Noir	PNO	FH, PR	F
			Pinot Noir - Sparkling Wine	PNR	FH, PR	F
			Pinot St George	PSG	FH, PR	F
			Port	PRT	FH, PR	F
			Prairie Star	PRS	FH, PR	F
			Prestine Seedless	PRE	FH, PR	F
			Primitivo	PRM	FH, PR	F
			Princess	PRI	FH, PR	F
			Ralli/Anahita	RAL	FH, PR	F
			Ravat	RAV	FH, PR	F
			Rayon Dor	RAY	FH, PR	F
			Red Globe	RDG	FH, PR	F
			Red Malaga	RML	FH, PR	F
			Red Suffolk	SFR	FH, PR	F
			Red Zinfandel	RDZ	FH, PR	F
			Redal Blanc	RED	FH, PR	F
			Reliance	REL	FH, PR	F
			Riber	RIB	FH, PR	F
			Riesling	RIE	FH, PR	F
			Riparia	RIP	FH, PR	F
			Rosette	ROS	FH, PR	F
			Rougeon	ROU	FH, PR	F
			Roussanne	ROA	FH, PR	F
			Royalty	RTY	FH, PR	F
Rubired	RBD	FH, PR	F			
Ruby Cabernet	RUC	FH, PR	F			
Ruby Red Seedless	RRS	FH, PR	F			
Ruby Seedless	RUB	FH, PR	F			
Sabrevois	SBV	FH, PR	F			
Sagrantino	SAG	FH, PR	F			
Salvador	SAL	FH, PR	F			

2003 and Subsequent Year Crops Reported on FSA-578 (Continued)

Crop Name	Crop Code	Crop Abbr	TYNE Name	Type Code	Intended Use	Land Use
Grapes (Continued)	0053	GRAPE	Sangiovet/Sangiovese	SAN	FH, PR	F
			Satum	SAT	FH, PR	F
			Sauvignon Vert	SAU	FH, PR	F
			Sauvignon Blanc/Fume Blanc	SAB	FH, PR	F
			Scarlet Royal	SCR	FH, PR	F
			--Scheurebe--	SCH	FH, PR	F
			Selma Pete	SLP	FH, PR	F
			Semillon	SEM	FH, PR	F
			--Seyval/Seyve Villard 5276--	SEY	FH, PR	F
			Sheridan	SHN	FH, PR	F
			Somerset Seedless	SOM	FH, PR	F
			Spike Mukley	SPI	FH, PR	F
			St Croix	STC	FH, PR	F
			St Emilion (Ugni Blanc)	STE	FH, PR	F
			St Pepin	STP	FH, PR	F
			St Vincent	STV	FH, PR	F
			Starkstar	SKS	FH, PR	F
			Steuben	STB	FH, PR	F
			Stuken	STU	FH, PR	F
			Sultana	SUL	FH, PR	F
			Summer Royal	SUM	FH, PR	F
			Sunbelt	SUN	FH, PR	F
			Superior Seedless	SSL	FH, PR	F
			Sweet Scarlet	SSC	FH, PR	F
			Swenson Red	SWE	FH, PR	F
			Sylvaner	SYL	FH, PR	F
			Symphony	SYM	FH, PR	F
			Syrah/French Syrah Shiraz	SYR	FH, PR	F
			Tannat	TAN	FH, PR	F
			Teroldego	TER	FH, PR	F
			Tempranillo/Valdepenas	TEM	FH, PR	F
			Thompson Seedless	THP	FH, PR	F
			Tinta Madera	TMD	FH, PR	F
			Tokay	TOK	FH, PR	F
			Touriga	TGA	PH, PR	F
			Traminette	TRA	FH, PR	F
			Valiant	VAL	FH, PR	F
			Valvin Muscat	VMC	FH, PR	F
			Vanessa	VAN	FH, PR	F
			Venifera	VNI	FH, PR	F
			Ventura	VNT	FH, PR	F
			Venus	VEN	FH, PR	F
			Verdelet Blanc	VER	FH, PR	F
Vidal	VDL	FH, PR	F			
Vidal Blanc	VDB	FH, PR	F			
Vignoles	VIG	FH, PR	F			
Villard Blanc	VBL	FH, PR	F			
Villard Noir	VNR	FH, PR	F			
Vincent	VIN	FH, PR	F			
Vitis Labrusca	LBR	FH, PR	F			
Vitis Vinifera	VVN	FH, PR	F			

2003 and Subsequent Year Crops Reported on FSA-578 (Continued)

Crop Name	Crop Code	Crop Abbr	Type Name	Type Code	Intended Use	Land Use
Grapes (Continued)	0053	GRAPE	Vivant	VIV	FH, PR	F
			Voignier	VOI	FH, PR	F
			White Cayuga	WCY	FH, PR	F
			White Malaga	WML	FH, PR	F
			White Riesling/Johannisberg	WHR	FH, PR	F
			Zinfandel	ZIN	FH, PR	F
			Zweigeltrebe	ZWE	FH, PR	F
Grass	0102	GRASS	Aeschynomene	AES	FG, GZ, LS, SD, SO	
			Alkalai	ALK	FG, GZ, LS, SD, SO	
			Altai Wild Rye	AWR	FG, GZ, LS, SD, SO	
			American Mamegrass	AME	FG, GZ, LS, SD, SO	
			American Sloughgrass	ASG	FG, GZ, LS, SD, SO	
			American Vetch	AMV	FG, GZ, LS, SD, SO	
			Annual Ryegrass	RAN	FG, GZ, LS, SD, SO,	
			Arctared Fescue	FAC	FG, GZ, LS, SD, SO	
			Argentine Bahia	ARG	FG, GZ, LS, SD, SO	
			Arizona	ARI	FG, GZ, LS, SD, SO	
			Bahalia	BAH	FG, GZ, LS, SD, SO	
			Bahia	BHI	FG, GZ, LS, SD, SO	
			Barbed Wire	BRB	FG, GZ, LS, SD, SO	
			Baron Goto	BAR	FG, GZ, LS, SD, SO	
			Basin Wild Rye	BAS	FG, GZ, LS, SD, SO	
			Bearded Fescue	FSB	FG, GZ, LS, SD, SO	
			Beardless Wildrye	BER	FG, GZ, LS, SD, SO	
			Bentgrass, Velvet	BGV	FG, GZ, LS, SD, SO	
			Big Blue	BBL	FG, GZ, LS, SD, SO	
			Big Bluestem	BLB	FG, GZ, LS, PR, SD, SO	
			Blue Bunch Wheat	WBB	FG, GZ, LS, SD, SO	
			Blue Grama	GBU	FG, GZ, LS, SD, SO	
			Blue Panic	BPG	FG, GZ, LS, SD, SO	
			Blue Wild Rye	BWR	FG, GZ, LS, SD, SO	
			Bluegrass, Alpine	BAL	FG, GZ, LS, SD, SO	
			Bluejoint	BLJ	FG, GZ, LS, SD, SO	
			Bluejoint Reedgrass	BJR	FG, GZ, LS, SD, SO	
			Bluestem, Caucasian	BSC	FG, GZ, LS, SD, SO	
			Bosioski Wild Rye	BOS	FG, GZ, LS, SD, SO	
			Bottlebrush Squirreltail	BSB	FG, GZ, LS, SD, SO	
			Broadleaf Signal	BRD	FG, GZ, LS, SD, SO	
			Buffalo	BUF	FG, GZ, LS, SD, SO	
			Buffel	BFF	FG, GZ, LS, SD, SO	
			California (Para)	CAL	FG, GZ, LS, SD, SO	
			California Brome	CFB	FG, GZ, LS, SD, SO	
			California Oat	COG	FG, GZ, LS, SD, SO	
			Canadian Bluegrass	CBG	FG, GZ, LS, SD, SO	
			Canadian Milkvetch	CMV	FG, GZ, LS, SD, SO	
			Canadian Wild Ryegrass	RCW	FG, GZ, LS, SD, SO	

2003 and Subsequent Year Crops Reported on FSA-578 (Continued)

Crop Name	Crop Code	Crop Abbr	Type Name	Type Code	Intended Use	Land Use
Grass (Continued)	0102	GRASS	Canary	CAN	FG, GZ, LS,	
			Canby	CBY	FG, GZ, LS,	
			Carex	CAR	FG, GZ, LS,	
			Carpet	CPT	FG, GZ,LS,	
			Centipede	CEN	FG, GZ, LS,	
			Coastal	BCS	FG, GZ, LS,	
			Colonial	BGC	FG, GZ, LS,	
			Common	BCM	FG, GZ, LS,	
			Crabgrass	CRG	FG, GZ, LS,	
			Creeping	BCR	FG, GZ, LS,	
			Crested Wheat	WCR	FG, GZ, LS,	
			Dallis	DAL	FG, GZ, LS,	
			Deertongue	DER	FG, GZ, LS,	
			Dichondra	DCH	FG, GZ, LS,	
			E/Koa	KOA	FG, GZ, LS,	
			* * *	* * *	* * *	
			Eastern Gama	EGG	*--FG, GZ, LS, SD--*	
			Egyptian	WRG	FG, GZ, LS,	
			Emerald	EME	FG, GZ, LS,	
			Fescue,	FCH	FG, GZ, LS,	
			Fescue, Hard	FSH	FG, GZ, LS,	
			Fescue,	FME	FG, GZ, LS,	
			Fescue, Red	FRE	FG, GZ, LS,	
			Fescue, Rough	FRO	FG, GZ, LS,	
			Fescue, Tall	FTA	FG, GZ, LS,	
			Galleta	GAL	FG, GZ, LS,	
			Garrison	CFG	FG, GZ, LS,	
			George Black	GBM	FG, GZ, LS,	
			Gordo	BLG	FG, GZ, LS,	
			Grama, Blue	GBH	FG, GZ, LS,	
			Grama, Blue	GBL	FG, GZ, LS,	
			Grama, Hairy	GHA	FG, GZ, LS,	
			Grama, Side	GSO	FG, GZ, LS,	
			Green Needle	GNE	FG, GZ, LS,	
			Green Panic	GPG	FG, GZ, LS,	
			Green	GST	FG, GZ, LS,	
			Guinea	GUI	FG, GZ, LS,	
			Hilo	HIL	FG, GZ, LS,	
			Hontax	HON	FG, GZ, LS,	
			Hybrid Bent	HBG	FG, GZ, LS,	
Hybrid	BGH	FG, GZ, LS,				
Idaho Fescue	IDA	FG, GZ, LS,				
Illinois Bundle	ILL	FG, GZ, LS,				
Indian	ING	FG, GZ, LS,				
Indian	IRG	FG, GZ, LS,				

2003 and Subsequent Year Crops Reported on FSA-578 (Continued)

Crop Name	Crop Code	Crop Abbr	Type Name	Type Code	Intended Use	Land Use
Grass (Continued)	0102	GRASS	Intermediate Ryegrass	RIN	FG, GZ, LS, SD, SO	
			Intermediate Wheat	WIN	*--FG, GR, GZ, LS, SD, SO--*	
			Johnson	JOH	FG, GZ, LS, SD, SO	
			Jose Tall Wheatgrass	JOS	FG, GZ, LS, SD, SO	
			Junegrass	JUN	FG, GZ, LS, SD, SO, GM	
			Kalms Brome	BRK	FG, GZ, LS, SD, SO	
			Kentucky 31 Fescue	KEN	FG, GZ, LS, SD, SO	
			Kentucky Bluegrass	BLK	FG, GZ, LS, SD, SO	
			Kikuyu	KIK	FG, GZ, LS, SD, SO	
			Kleberg Bluestem	KLB	FG, GZ, LS, SD, SO	
			Klein	KLE	FG, GZ, LS, SD, SO	
			Leriope	LER	FG, GZ, LS, SD, SO	
			Limpo Grass	LMP	FG, GZ, LS, SD, SO	
			Limosine	LIM	FG, GZ, LS, SD, SO	
			Little Bluestem	BLL	FG, GZ, LS, PR, SD, SO	
			Magnar	MAG	FG, GZ, LS, SD, SO	
			Mammoth Wild	MAM	FG, GZ, LS, SD, SO	
			Mason Sandhill Lovegrass	LMS	FG, GZ, LS, SD, SO	
			Matua	MAT	FG, GZ, LS, SD, SO	
			Maxmillian Sunflower	MAX	FG, GZ, LS, SD, SO	
			Meadow	MBG	FG, GZ, LS, SD, SO	
			Meadow Foxtail	MFG	FG, GZ, LS, SD, SO	
			Medio Bluestem	BLM	FG, GZ, LS, SD, SO	
			Miscanthus	MIS	FG, GZ, LS, PR, SD, SO, SE	
			Molasses	MLS	FG, GZ, LS, SD, SO	
			Mountain Brome	BRM	FG, GZ, LS, SD, SO	
			Mutton	MUT	FG, GZ, LS, SD, SO	
			Napier	NAP	FG, GZ, LS, SD, SO	
			Native	NAG	FG, GZ, LS, SD, SO, GM	
			Needle And Thread	NAT	FG, GZ, LS, SD, SO	
			Newhy Hybrid Wheatgrass	NEW	FG, GZ, LS, SD, SO	
			Norcoast Tufted Hairgrass	HNC	FG, GZ, LS, SD, SO	
			Nortran Tufted Hairgrass	HNT	FG, GZ, LS, SD, SO	
			Old World Bluestem	BOW	FG, GZ, LS, SD, SO	
			Orchard	ORG	FG, GZ, LS, SD, SO, GM	
			Other Bent	BGO	FG, GZ, LS, SD, SO	
			Other Brome	BRO	FG, GZ, LS, SD, SO, GM	
			Other Creeping Foxtail	CFO	FG, GZ, LS, SD, SO	
			Pampas	PAM	FG, GZ, LS, SD, SO	
			Pangola	PAN	FG, GZ, LS, SD, SO	
Perennial Ryegrass	RPE	FG, GZ, LS, SD, SO, GM				
Pitcher Sage	PIT	FG, GZ, LS, SD, SO				
Plains Blue Stems	PBL	FG, GZ, LS, SD, SO				
Plains Bristle	PLB	FG, GZ, LS, SD, SO				

2003 and Subsequent Year Crops Reported on FSA-578 (Continued)

Crop Name	Crop Code	Crop Abbr	Type Name	Type Code	Intended Use	Land Use
Grass (Continued)	0102	GRASS	Polar Brome	BRP	FG, GZ, LS, SD, SO	
			Prairie	PRA	FG, GZ, LS, SD, SO	
			Prairie Cordgrass	PRC	FG, GZ, LS, SD, SO	
			Prairie Dropseed	PRD	FG, GZ, LS, SD, SO	
			Prairie June	PJG	FG, GZ, LS, SD, SO	
			Prarie Sandreed	PRS	FG, GZ, LS, SD, SO	
			Pubescent Wheat	WPU	FG, GZ, LS, SD, SO	
			Red Ratibita	RRA	FG, GZ, LS, SD, SO	
			Redtop	RDT	FG, GZ, LS, SD, SO	
			Reed Canary	RCA	FG, GZ, LS, SD, SO	
			Regar Brome	BRR	FG, GZ, LS, SD, SO	
			Rhodes	RHO	FG, GZ, LS, SD, SO	
			River Oats	RIV	FG, GZ, LS, SD, SO	
			Riverbank Wildrye	RVB	FG, GZ, LS, SD, SO	
			Roemers Fescue	FSR	FG, GZ, LS, SD, SO	
			Rough Bluegrass	BLH	FG, GZ, LS, SD, SO	
			Ruff Fairway Crstd Wht Grs	WRF	FG, GZ, LS, SD, SO	
			Rugby Bluegrass	BLR	FG, GZ, LS, SD, SO	
			Russian Wild Ryegrass	RRW	FG, GZ, LS, SD, SO	
			Sainfoin	SAI	FG, GZ, LS, SD, SO	
			Saint Augustine	STA	FG, GZ, LS, SD, SO	
			Sand Bluestem	BLS	FG, GZ, LS, SD, SO	
			Sand Dropseed	SDR	FG, GZ, LS, SD, SO	
			Sand Lovegrass	LSA	FG, GZ, LS, SD, SO	
			Sandberg Bluegrass	SDB	FG, GZ, LS, SD, SO	
			Seashore Paspalum	SPS	FG, GZ, LS, SD, SO	
			Secar Bluebunch	SEC	FG, GZ, LS, SD, SO	
			Siberian Wheat	WSI	FG, GZ, LS, SD, SO	
			Silky Wildrye	SIL	FG, GZ, LS, SD, SO	
			Slender Hair	SLE	FG, GZ, LS, SD, SO	
			Slender Wild Rye	SWR	FG, GZ, LS, SD, SO	
			Small Burnett	SMB	FG, GZ, LS, SD, SO	
			Smooth Brome	SMO	FG, GZ, LS, SD, SO	
			Smut	SMT	FG, GZ, LS, SD, SO	
			Soft Stem Blurush	SSB	FG, GZ, LS, SD, SO	
			Spike Muhley	SPI	FG, GZ, LS, SD, SO	
			Sprigs Bermuda	BSP	FG, GZ, LS, SD, SO	
			Stargrass	STR	FG, GZ, LS, SD, SO	
			Sudan	SUD	FG, GZ, LS, SD, SO, GM	
			Switch	SWI	FG, GZ, LS, PR, SD, SO	
Thick Spike Wheatgrass	TSW	FG, GZ, LS, SD, SO				
Timothy	TIM	FG, GZ, LS, SD, SO, GM				
Trailhead Basin	TRL	FG, GZ, LS, SD, SO				
Trailhead Basin Wild Rye	TBW	FG, GZ, LS, SD, SO				

2003 and Subsequent Year Crops Reported on FSA-578 (Continued)

Crop Name	Crop Code	Crop Abbr	Type Name	Type Code	Intended Use	Land Use
Grass (Continued)	0102	GRASS	Trudane	TRU	FG, GZ, LS, SD, SO	
			Tufted Hairgrass	THG	FG, GZ, LS, SD, SO	
			Tundra Bluegrass	TBL	FG, GZ, LS, SD, SO	
			* * *	* * *	* * *	
			Vetiver	VET	FG, GZ, LS, PR, SD, SO	
			Virginia Wild Rye	VWR	FG, GZ, LS, SD, SO	
			Virginia Wildrye	VIR	FG, GZ, LS, SD, SO	
			Wainaku	WAI	FG, GZ, LS, SD, SO	
			Water Foxtail	WAT	FG, GZ, LS, SD, SO	
			Weeping Lovegrass	LWE	FG, GZ, LS, SD, SO	
			Western Wheatgrass	WWE	FG, GZ, LS, SD, SO	
			Wheat Streambank	WST	FG, GZ, LS, SD, SO	
			Wheat , Slender	WSL	FG, GZ, LS, SD, SO	
			Wheat , Tall	WTA	FG, GZ, LS, SD, SO	
			Wheeler Bluegrass	WHB	FG, GZ, LS, SD, SO	
			White Prairie Clover	WPR	FG, GZ, LS, SD, SO	
			Wild Berganot	WBG	FG, GZ, LS, SD, SO	
			Wilmon Lovegrass	WIL	FG, GZ, LS, SD, SO	
Yellow Bluestem	BLY	FG, GZ, LS, SD, SO				
Zoysia	ZOY	FG, GZ, LS, SD, SO				
Grassland Reserve Program	1250	GRP			blank, FG, or GZ	
Greens	4000	GREEN	Arugula	ARU	FG	
			Arugula	ARU	FH, PR, RS, SD	F
			Asian	ASI	FG	
			Asian	ASI	FH, PR, RS, SD	F
			Chinese Mustard	CHN	FG	F
			Chinese Mustard	CHN	FH, PR, RS, SD	F
			Chinese Spinach/Amaranth	CHI	FG	
			Chinese Spinach/Amaranth	CHI	FG, FH, PR, RS, SD	F
			Collards	COL	FG	
			Collards	COL	FH, PR, RS, SD SE	F
			Common Kale	COM	FG	
			Common Kale	COM	FH, PR, RS, SD SE	F
			Cressie	CRE	FG	
			Cressie	CRE	FH, PR, RS, SD	F
			Curly Endive	CUR	FG	
			Curly Endive	CUR	FH, PR, RS, SD	F
			Dandelions	DAN	FG	
			Dandelions	DAN	FH, PR, RS, SD	F
			Escarole	ESC	FG	
			Escarole	ESC	FH, PR, RS, SD	F

2003 and Subsequent Year Crops Reported on FSA-578 (Continued)

Crop Name	Crop Code	Crop Abbr	Type Name	Type Code	Intended Use	Land Use
Greens (Continued)	4000	GREEN	Flowering Kale	FLW	FG	
			Flowering Kale	FLW	FH, PR, RS, SD SE	F
			Frizee/Belgian Endive	EDF	FG	
			Frizee/Belgian Endive	EDF	FH, PR, RS, SD	F
			Green Swisschard	GRN	FG	
			Green Swisschard	GRN	FH, PR, RS, SD	F
			Hanover	HAN	FG	
			Hanover	HAN	FH, PR, RS, SD	F
			Hybrid Mustard	HYB	FG	
			Hybrid Mustard	HYB	FH, PR, RS, SD	F
			Leaf Spinach	LEF	FG	
			Leaf Spinach	LEF	FH, PR, RS, SD	F
			Mizuna/Japanese Mustard	MIZ	FG	
			Mizuna/Japanese Mustard	MIZ	FH, PR, RS, SD	F
			Open Pollinated Mustard	OMS	FG	
			Open Pollinated Mustard	OMS	FG, FH, PR, RS, SD	F
			Orach	ORA	PR, SD	F
			Perilla/Shiso/Japanese Basil	PER	FG	
			Perilla/Shiso/Japanese Basil	PER	FH, PR, RS, SD	F
			Rape/Rapini/Chinese Broccoli	RAP	FG	
			Rape/Rapini/Chinese Broccoli	RAP	FH, GZ, PR, RS, SD	F
			Red Swisschard	RED	FG	
			Red Swisschard	RED	FH, PR, RS, SD	F
			Shanghi Bok Choy	SHA	FG	
			Shanghi Bok Choy	SHA	FH, PR, RS, SD	F
			Shum Choy	SHC	FG	
			Shum Choy	SHC	FH, PR, RS, SD	F
			Sorrell	SOR	FG	
			Sorrell	SOR	FH, PR, RS, SD	F
			Suk Gat	SUK	FG	
			Suk Gat	SUK	FH, PR, RS, SD	F
			Toc Choy	TOC	FG	
			Toc Choy	TOC	FH, PR, RS, SD	F
			Turnip	TUR	FG	
			Turnip	TUR	FH, PR, RS, SD	F
			Vine Spinach	VIN	FG, RS, SD	
			Vine Spinach	VIN	FH, PR	F
			Water Spinach	WAT	FG	
			Water Spinach	WAT	FH, PR, RS, SD	F
			Yu Choy	YUC	FG	
Yu Choy	YUC	FH, PR, RS, SD	F			

2003 and Subsequent Year Crops Reported on FSA-578 (Continued)

Crop Name	Crop Code	Crop Abbr	Type Name	Type Code	Intended Use	Land Use
Ground Cherry	0127	GRCHY	Chinese Lantern Plant	CHL	FH, PR	F
Guamabana/Soursop	1167	GUANA			FH	
Guar	0134	GUAR			GM, GR, LS, SD	
Guava	0498	GUAVA			FH, PR	F
Guavaberry	1299	GUBRY			FH	F
Guayule	0492	GUAYU			Blank	
Hazel Nuts	0376	HAZNT			Blank	F
Herbs	5000	HERBS	Anise Hyssop	HYA	FH, PR, SD	
			Basil	BAS	FH, PR, SD	
			Bay Leaf	BAY	FH, PR, SD	
			Borage	BOR	FH, PR, SD	
			Bu Choo/Garlic Chives	BUC	FH, PR, SD	
			Burdock	BUR	FH, PR, SD	
			***	***	***	
			Camomile	CMM	FH, PR, SD	
			Caraway	CWY	FH, PR, SD	
			***	***	***	
			Catnip	CAT	FH, PR, SD	
			Chervil	CHR	FH, PR, SD	
			Chives	CHI	FH, PR, SD	
			Cilantro/Coriander	CIL	FH, PR, SD	
			Clary Sage	CLS	PR	
			Common Hyssop	HYC	FH, PR, SD	
			Common Sage	SAG	FH, PR, SD	
			Crotalaria	CRO	FH, PR, SD	
			Cuphea	CUP	FH, PR, SD	
			Deodeok (False Ginseng)	DEO	FH, PR, SD	
Dill	DIL	FH, PR, SD				
Echinacea	ECH	FH, PR, SD				
Fennel/Anise	FNL	FH, PR, SD				

2003 and Subsequent Year Crops Reported on FSA-578 (Continued)

Crop Name	Crop Code	Crop Abbr	Type Name	Type Code	Intended Use	Land Use
Herbs (Continued)	5000	HERBS	Fenugreek	FEN	FH, PR, SD	
			Gobo	GOB	RT	
			Goldenseal	GLD	FH, PR, SD	
			Kookoolau	KOO	FH, PR, SD	
			Lemon Balm	LMB	FH, PR, SD	
			Lemon Grass	LMG	FH, PR, SD	
			Lemon Verbena	LEM	FH, PR, SD	
			Mamaki	MKI	FH, PR, SD	
			Marjoram	MAR	FH, PR, SD	
			Milkthistle	MLK	FH, PR, SD	
			Mint	MNT	FH, PR, SD	
			Mint Apple	MTA	FH, PR, SD	
			Mullein	MUL	FH, PR, SD	
			Native Spearmint	NAT	FH, PR, SD	
			Oregano	ORE	FH, PR, SD	
			Parsley	PAR	FH, PR, RT, SD	
			Peppermint	PEP	FH, PR, SD	
			--Recao/Culantro--	REC	FH, PR, SD	
			Rosemary	ROS	FH, PR, SD	
			Savory	SAV	FH, PR, SD	
			Scotch Spearmint	SCO	FH, PR, SD	
			Self-Heal	SLF	FH, PR, SD	
			St Johns Wort	STJ	FH, PR, SD	
Stevia	STV	FH, PR, SD				
Sungrass	SUN	FH, PR, SD				
Tarragon	TAR	FH, PR, SD				
Thyme	THY	FH, PR, SD				
Turmeric	TUR	FH, PR, SD				
Worm Grass	WRG	FH, PR, SD				
Hesperaloe/Agave	0837	HSPRL			Blank	
Honey	1190	HONEY			FH, NT, TB	
Honeydew	0758	HNYDW			FH, SD	F
Hops	0138	HOPS			FH, PR	
Horseradish	0090	HORSE			FH, PR, RS, SD	
Huckleberries	0622	HUKBR			FH, PR	F
Idle	0105	IDLE			Blank	
Indigo	0440	INDIG			FH	
Industrial Rice	1217	RICEI			blank	
Honeyberries	1297	HONYB			FH, PR	F
Industrial Hemp	1218	IHEMP			GR, PR, SD	

2003 and Subsequent Year Crops Reported on FSA-578 (Continued)

Crop Name	Crop Code	Crop Abbr	Type Name	Type Code	Intended Use	Land Use
Mixed Forage (Continued)	0296	MIXFG	Alfalfa Grass Mixture	AGM	FG, GM, GZ, LS, SD, SO	
			Alfalfa Small Grain Interseeded	ASG	FG, GM, GZ, LS, SD, SO	
			Grass Mix-Below 25% Alfalfa	GMA	FG, GM, GZ, LS, SD, SO	
			Grass/Small Grain Interseeding	SSG	FG, GM, GZ, LS, SD, SO	
			Hay Oats And Peas	OTP	FG, GM, GZ, LS, SD, SO	
			Legume/Coarse Grain	LCG	FG, GM, GZ, LS, SD, SO	
			Legume/Grass Mixture	LGM	FG, GM, GZ, LS, SD, SO	
			Legume/Small Grain	LSG	FG, GM, GZ, LS, SD, SO	
			Legume/Small Grain/Grass	LGG	FG, GM, GZ, LS, SD, SO	
			Legume/Small Grain/Grass/ Vegetable Interseeded	LGV	GM, GZ, LS	
			Native Grass Interseeded	NSG	FG, GM, GZ, LS, SD, SO	
			Oilseed/Grain Interseeded	OSG	FG, GM, GZ, LS	
			Small Grain/Grass/Vegetable Interseeded	GGV	GM, GZ, LS	
			Small Grain/Legume/ Vegetable Interseeded	GLV	GM, GZ, LS	
Mohair	2015	MOHAR			Blank	
Mollusk	3001	MOLSK	Abalone	ABA	FH, PR	
			Bay Scallops	BAY	FH, PR	
			Growout Clams	GRO	FH, PR	
			Mussel	MUS	FH, PR	
			Nursery Clams	NUR	FH, PR	
			Oysters	OYS	FH, PR	
			Raceway Clams	RAC	FH, PR	
Mulberries	0370	MULBR			FH, JU	F
Mushrooms	0403	MUSHR	Common	COM	FH, PR	F
			Shitake	SHI	FH, PR	F
Mustard	0130	MUSTD	Brown	BWN	GM, GR, PR, SD	
			Oriental	ORN	GM, GR, PR, SD	
			Yellow	YEL	GM, GR, PR, SD	
Nectarines	0250	NECTR	Common	COM	FH, PR	F
			Early Season	NEE	FH	F
			Late Season	NEL	FH	F
			Mid Season	NEM	FH	F
Niger Seed	2011	NGRSD			Blank	
Noni	0421	NONI			FH, JU, PR	F
Nursery	1010	NRSRY	Container	CON	Blank	
			Edible Container	EDC	Blank	
			Edible Field	EDF	Blank	
			Field	FLD	Blank	
Note:	Report whole Ferns, Holly, Plants, Vines, and Shrubs under Nursery. Report Fern Fronds or cuttings for floriculture as Flowers/Fern Fronds(7501-FFS).					

2003 and Subsequent Year Crops Reported on FSA-578 (Continued)

Crop Name	Crop Code	Crop Abbr	Type Name	Type Code	Intended Use	Land Use
Oats	0016	OATS	Hulless Spring	HLS	*--FG, GM, GR, GZ, LS, SD	
			Hulles Winter	HLW	FG, GM, GR, GZ, LS, SD	
			Spring	SPR	FG, GM, GR, GZ, LS, SD	
			Winter	WTR	FG, GM, GR, GZ, LS, SD--*	
Okra	0286	OKRA			FH, PR, SD	F
Olives	0501	OLIVE	Manzanilla	MNZ	OL, PR	F
Onions	0142	ONION	Bunching	BEL	GZ	
			Bunching	BEL	FH, PR, SD, SE	F
			Fall Planted White & Yellow	FWY	GZ	
			Fall Planted White & Yellow	FWY	FH, PR, SD, SE	F
			Green	GRN	GZ	
			Green	GRN	FH, PR, SD, SE	F
			Hybrid	HYB	GZ	
			Hybrid	HYB	FH, PR, SD, SE	F
			Little White Pearl	LWP	GZ	
			Little White Pearl	LWP	FH, PR, SD, SE	F
			Open Pollinated	OPN	GZ	
			Open Pollinated	OPN	FH, PR, SD, SE	F
			Reds	RED	GZ	
			Reds	RED	FH, PR, SD, SE	F
			Storage	STR	GZ	
			Storage	STR	FH, PR, SD, SE	F
			Sweet, Early	SWE	GZ	
			Sweet, Early	SWE	FH, PR, SD, SE	F
			Sweet, Late	SWL	GZ	
			Sweet, Late	SWL	FH, PR, SD, SE	F
Tokyo Long White Bunch	TLW	GZ				
Tokyo Long White Bunch	TLW	FH, PR, SD, SE	F			
Whites	WHT	GZ				
Whites	WHT	FH, PR, SD, SE	F			
Yellow Hybrid	YHY	GZ				
Yellow Hybrid	YHY	FH, PR, SD, SE	F			
Oranges	0023	ORANG	Blood And Toerh	BLT	FH, JU, PR	F
			Calamondin	CAL	FH, JU, PR	F
			Early Midseason	ETM	FH, JU, PR	F
			Early	ERL	FH, JU, PR	F
			Late	LAT	FH, JU, PR	F
			Mandarins	MND	FH, JU, PR	F
			Navel	NAV	FH, JU, PR	F
			Sweet	SWT	FH, JU, PR	F
			Temple	TMP	FH, JU, PR	F
			Valencia	VLN	FH, JU, PR	F

2003 and Subsequent Year Crops Reported on FSA-578 (Continued)

Crop Name	Crop Code	Crop Abbr	Type Name	Type Code	Intended Use	Land Use
Papaya	0181	PAPAY	*--Babaco	BAB	FH, PR	F
			Cariflora	CRF	FH, PR	F
			Higgins	HGI	FH, PR	F
			Kamiya	KAM	FH, PR	F
			Kapaho	KAP	FH, PR	F
			Laie Gold	LAI	FH, PR	F
			Rainbow	RBW	FH, PR	F
			Red (Mexican)	RED	FH, PR	
			Sunrise	SRI	FH, PR	F
			Sunset	SST	FH, PR	F
			SunUp	SNP	FH, PR	F
			Vista Solo	VSO	FH, PR	F
			Waimanalo	WMO	FH, PR	F
Yellow (Mexican)	YEL	FH, PR	F--*			
Parsnip	0338	PARSN	Hybrid	HYB	FH, SD	F
			Open Pollinated	OPN	FH, SD	F
Passion Fruits	0502	PASFT			FH	F
PawPaw	0381	PAWPA			FH	F
Peaches	0034	PEACH	Cling Peaches	CLI	FH, PR, RS	F
			Freestone Early Season	FSE	FH	F
			Freestone Late Season	FSL	FH	F
			Freestone Mid Season	FSM	FH	F
			Freestone Peaches	FRE	FH, PR, RS	F
			Sf Cling Earlies	SCE	FH, PR, RS	F
			Sf Cling Ext Early	SCP	FH, PR, RS	F
			Sf Cling Ext Late	SCX	FH, PR, RS	F
Sf Cling Late	SCL	FH, PR, RS	F			
Peanuts	0075	PNUTS	Runner Peanuts	RUN	GP, HP, NP	
			Southeast Spanish Peanuts	SPE	GP, HP, NP	
			Southwest Spanish Peanuts	SPW	GP, HP, NP	
			Valencia Peanuts	VAL	GP, HP, NP	
			Virginia Peanuts	VIR	GP, HP, NP	
Pears	0144	PEARS	Anjou Pears	ANJ	FH, JU, PR, RS	F
			Asian Pears	ASN	FH, JU, PR, RS	F
			Bosc Pears	BOS	FH, JU, PR, RS	F
			Comice	CMC	FH, JU, PR, RS	F
			Common	COM	FH, JU, PR, RS	F
			Green Bartlett	BLT	FH, JU, PR, RS	F
			Speciality	SPC	FH, JU, PR, RS	F
Peas	0067	PEAS	*--Arvika	ARV	FG, GM, GZ--*	
			Austrian	AUS	DE, FG, GM, GZ, SD	
			Black Eye	BLE	FG, GM	
			Black Eye	BLE	DE, FH, PR, SD	F
			Butter	BUT	FG, GM	
			Butter	BUT	DE, FH, PR, SD	F
			Caley	CAL	FG, GM	

2003 and Subsequent Year Crops Reported on FSA-578 (Continued)

Crop Name	Crop Code	Crop Abbr	Type Name	Type Code	Intended Use	Land Use
Peas (Continued)	0067	PEAS	Caley	CAL	DE, FH, PR, SD	F
			Chickling (Vetch)	CHK	FG, GZ, SD	
			China	CHI	FG, GM	
			China	CHI	DE, FH, PR, SD	F
			Cow	COW	FG, GM	
			Cow	COW	DE, FH, PR, SD	F
			Cream	CRM	FG, GM	
			Cream	CRM	DE, FH, PR, SD	F
			Crowder	CRO	DE, FH, PR, SD	F
			English/Garden	ENG	FG, GM	
			English/Garden	ENG	DE, FH, PR, SD	F
			Flat	FLT	FG, GM	
			Flat	FLT	DE, FH, PR, SD	F
			Green	GRN	DE, FG, GM, GZ, SD	
			Marrowfat	MAR	DE, FG, GM, GZ, SD	
			Mini	MIN	FG, GM	
			Mini	MIN	DE, FH, PR, SD	F
			Partridge	PAR	DE, FG, FH, GM, PR, SD	
			Pigeon	PIG	FG, GM	
			Pigeon	PIG	DE, FH, PR, SD	F
			Pink Eyed	PNK	FG, GM	
			Pink Eyed	PNK	DE, FH, PR, SD	F
			Purple Hull	PHL	FG, GM	
			Purple Hull	PHL	DE, FH, PR, SD	F
			Rondo	RON	FG, GM	
			Rondo	RON	DE, FH, PR, SD	F
			Snap	SNA	FG, GM	
			Snap	SNA	DE, FH, PR, SD	F
			Snow	SNO	FG, GM	
			Snow	SNO	DE, FH, LV, PR, SD	F
			Southern Acre	SOA	FG, GM	
			Southern Acre	SOA	DE, FH, PR, SD	F
			Speckled/Colored	SPK	FG, GM, GZ-	
Speckled/Colored	SPK	DE, FH, PR, SD	F			
Sugar	SUG	FG, GM				
Sugar	SUG	DE, FH, LT, PR, SD	F			
Umatilla	UMA	DE, FG, GM, SD				
Wrinkled Seed	WSD	DE, FG, GM, GZ, SD				
Yellow Variety	YEL	DE, FG, GM, GZ, SD,				
Note: Peas raised for the fresh market, canning, or freezing shall be reported as English/Garden (ENG) if the pea is grown and harvested for the round pea to be removed from the pod, or Snap (SNA), Snow (SNO), or Sugar (SUG) if the pea is grown for the edible pea pod. Green (GRN) type pea is a dry pea which is exempt from FAV along with Austrian, Umatilla, Wrinkled Seed, and Yellow Variety peatypes.						
Pecans	0146	PECAN	Improved Pecans	IMP	blank	F
			Native Pecans	NAT	blank	F
Pejibaye (Heart Of Palm)	3015	PEJIB			FH	F
Pelt	2017	PELT			blank	
Pennycress	0615	PENNY			PR	

2003 and Subsequent Year Crops Reported on FSA-578 (Continued)

Crop Name	Crop Code	Crop Abbr	Type Name	Type Code	Intended Use	Land Use
Pumpkins	0147	PUMKN	Chinese Pumpkins	CHI	FH, PR, SD	F
			Cinderella	CIN	FH, PR, SD	F
			Cushaw	CUS	FH, PR, SD	F
			Ghost	GHO	FH, PR, SD	F
			Howden Pumpkins	HOD	FH, PR, SD	F
			Jack-O-Lantern	JAC	FH, PR, SD	F
			Kobacha/Calabaza	KOB	FH, PR, SD	F
			Mammoth	MAM	FH, PR, SD	F
			Mini Pumpkins	MIN	FH, PR, SD	F
			Sugar	SUG	FH, PR, SD	F
Quinces	0468	QUINC			FH, PR	F
Quinoa	0716	QUINO			FH, GR	
Radishes	0148	RADIS	Chinese	CHI	GM	
			Chinese	CHI	FH, LS, SD	F
			Daikon	DAI	GM	
			Daikon	DAI	FH, LS, SD	F
			Hybrid	HYB	GM	
			Hybrid	HYB	FH, LS, SD	F
			Korean	KOR	GM	
			Korean	KOR	FH, LS, SD	F
			Oilseed	OLS	GM	
			Oilseed	OLS	FH, LS, SD	F
			Open Pollinated	OPN	GM	
Open Pollinated	OPN	FH, LS, SD	F			
Raisins	0037	RAISN			Blank	F
Rambutan	7164	RMBTN			FH, PR, RS, SD	F
Rapeseed	0129	RAPE			FG, GM, GR, GZ, PR, SD	
			Carinata/Ethiopian Mustard, Fall	CAF	GM, PR, SD	
			Carinata/Ethiopian Mustard, Spring	CAS	GM, PR, SD	
Note: Rapeseeds types that are not considered Carinata/Ethiopian Mustard shall be reported as the "blank" type.						
Rhubarb	0335	RHUBR			FH, PR, RS	F
Rice	0018	RICE	Long Grain	LGR	GR, PR, SD	
			Medium Grain	MGR	GR, PR, SD	
			Short Grain	SGR	GR, PR, SD	
Rice, Industrial	1217	RICEI			Blank	
Note: Report genetically engineered rice, such as "ventria" under industrial rice.						
Rice, Sweet	0904	RICES			GR, PR, SD	F
Rice, Wild	0641	RICEW	*--Cultivated	CTV	GR, PR, SD	F
			Native	NTO	GR, PR	F--*

2003 and Subsequent Year Crops Reported on FSA-578 (Continued)

Crop Name	Crop Code	Crop Abbr	Type Name	Type Code	Intended Use	Land Use
Rutabaga	0339	RUBAG			FH, PR, SD	F
Rye	0094	RYE			*--FG, GM, GR, GZ, LS, SD--*	
Safflower	0079	SFLWR			FG, FH, SD	
Salsify ("Oyster Plant")	0532	SALSI			FH, PR	F
Sapodilla	8008	SPDLA			FH	F
Sapote	0998	SAPBK	Black Sapote	BLA	FH, PR	F
			Mamey Sapote	MAM	FH, PR	F
			White Sapote	WHI	FH, PR	F
Scallions	8109	SCALN			SD	
					FH, PR	F
Schizandra Berries	0426	SCHIZ			FH, PR	F
Sesame	0396	SESME			*--GR, SD, PR--*	
Shallots	0533	SHALL			FH, SD	F
Shrubs/Forbs	7505	SHRUB	Compass Plant	CMP	SD	
			Fourwing Saltbush	FWS	SD	
			Mixed Wild Flowers/Pollinator Habitat	MWF	LS	
			Prairie Coneflower	PCF	SD	
			Sagebrush	SGB	LS, SD	
			Winterfat	WIN	SD	
Skip Rows	0790	SKPRW			Blank	
Sorghum	0051	SORGH	Grain	GRS	FG, GR, GZ, SD, SG	
			Hybrid Interplanting Forage	HIF	FG, GR, GZ, SD	
			Hybrid	HIG	FG, GR, GZ, SD, SG	
			Hybrid Standardplant Fg	HSF	FG, GR, GZ, SD	
			Hybrid Standardplant Gr	HSG	FG, GR, GZ, SD	
			Hybrid Standardplant Su	HSS	FG, GR, GZ, SD	
Sorghum, Forage	0050	SORGF	Alum	ALU	FG, GM, GZ, LS, ML, PR, SD, SG	
			Cane	CAN	FG, GM, GZ, LS, ML, PR, SD, SG	
			Sudex	SUD	FG, GM, GZ, LS, ML, PR, SD, SG	
			Sweet	SWT	FG, GM, GZ, LS, ML, PR, SD, SG	
Sorghum, Dual Purpose	0052	SORGD			FG, GM, GR, GZ, SD, SG	

2003 and Subsequent Year Crops Reported on FSA-578 (Continued)

Crop Name	Crop Code	Crop Abbr	Type Name	Type Code	Intended Use	Land Use
Tobacco, Virginia Fire Cured	0003	VFCTB			blank	
Tobacco, Virginia Sun Cured	0006	VSCTB			blank	
Tomatillos	7158	TOMTL			FH, PR	F
Tomatoes	0087	TMATO	Cherry	CHR	FH, PR, RS, SD	F
			Grape	GRP	FH, PR, RS, SD	F
			Green	GRN	FH, PR, RS, SD	F
			Hybrid	HYB	FH, PR, RS, SD	F
			Japanese	JPN	FH, PR, RS, SD	F
			Plum	PLM	FH, PR, RS, SD	F
			Yellow	YEL	FH, PR, RS, SD	F
Trees, Timber	7506	TREES			blank	
Triticale	0158	TRICL			*--FG, GM, GR, GZ, LS, SD--*	
Truffles	0405	TRUFF			FH	F
Turnips	0160	TRNIP	Forage Turnip	FTP	FG, GZ, SD	
			Hybrid Turnip	HYB	GZ	
			Hybrid Turnip	HYB	FH, PR, SD	F
			Open Pollinated	OPN	GZ	
			Open Pollinated	OPN	FH, PR, SD	F
Vanilla	1295	VANIL			blank	
Vetch	0435	VETCH	Cicer Milkvetch	CIC	FG, GM, GZ, SD	
			Common Vetch	COM	FG, GM, GZ, SD	
			Crown Vetch	CRW	FG, GM, GZ, RS, SD	
			Hairy Vetch	HRY	FG, GM, GZ, SD	
Walnuts	0029	WLNUT	Black	BLK	blank	F
			English	ENG	blank	F
Wampee	7320	WAMPI			blank	
Wasabi	7509	WASAB			FH, PR, SE, SD	
Water Cress	0613	WACRE			FH, PR	F
Water Impoundment Structure	0776	WTRIS			blank	
Waterbank	0093	WBP			blank	

2003 and Subsequent Year Crops Reported on FSA-578 (Continued)

Crop Name	Crop Code	Crop Abbr	Type Name	Type Code	Intended Use	Land Use
Watermelon	0757	WATRM	Common	COM	FH, SD, LS	F
			Crimson Sweet	CRM	FH, SD	F
			Ice Box/Sugar Babies	SUG	FH, SD	F
			Jubilee	JUB	FH, SD	F
			Personal/Mini	PER	FH, SD	F
			Seedless	SED	FH, SD	F
			Striped	STR	FH, SD, LS	F
Wax Jamboo Fruit	7302	WXJMB			FH	F
Wetland Bank Reserve	9011	WBR			Blank	
Wetland Reserve Program	2006	WRP			Blank	
Wheat	0011	WHEAT	Hard Amber Durum, Winter	HAW	*--FG, GM, GR, GZ, LS, SD	
			Hard Amber Durum, Spring	HAD	FG, GM, GR, GZ, LS, SD	
			Hard Red Spring	HRS	FG, GM, GR, GZ, LS, SD	
			Hard Red Winter	HRW	FG, GM, GR, GZ, LS, SD	
			Hard White Spring	HWS	FG, GM, GR, GZ, LS, SD	
			Hard White Winter	HWR	FG, GM, GR, GZ, LS, SD	
			Soft Red Winter	SRW	FG, GM, GR, GZ, LS, SD	
			Soft White Spring	SWS	FG, GM, GR, GZ, LS, SD	
			Soft White Winter	SWW	FG, GM, GR, GZ, LS, SD--*	
Wildlife Food Plot	0777	WLDFP			Blank	
Wildlife Habitat Incentive Program	2007	WHIP			Blank	
Wolfberry/Goji	0427	WOLFB			FH, PR	F
Woodland/Native Understory	7508	WNUND			GZ	
Wool	2016	WOOL			Blank	
Yam	0188	YAM	Diamond	DMD	FH, LT, PR	F
			Habanero	HAB	FH, LT, PR	F
			Purple	PUR	FH, LT, PR	F
			Sweet	SWT	FH, LT, PR	F
Yu Cha ("Tea Tree Oil" - oilseed plant)	0695	YUCHO			SG	
					FH, PR, RS, SD	F

***--Instructions for Creating New Product Requests**

A Background

County Office users will use the CRM “New Product Request” process to make requests for new products (crop and type) and/or intended uses. Once completed by the County Office, the State Office must then review the request and attach additional information, as necessary. Following the State Office review, the National Office will review the request and will either approve or deny.

The status of the new product request can be viewed at any time in CRM. In addition to the requesting County Office, all FSA employees can view all pending and completed new product requests and the current status of each request. Requests for **new product** additions will **not** be considered unless all required information is included. Once approved, the new product will be available for FSA transactions for all counties, and not only in the county that submitted the request.

B Requirements

The following AgLearn courses are minimum requirements for accessing and using CRM-Product Master:

- FN100 Introduction to MIDAS
- FN200 Basic Navigation of MIDAS CRM
- FN220 Managing the MIDAS Universal Worklist
- CT300 Product Master Overview
- CT310 Product Master - New Product Request.

C County Office Instructions

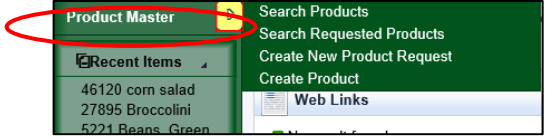
The following are the instructions for County Offices.

Step	Instructions
1	Navigate to MIDAS CRM-Product Master and open Product Master located at https://mprdep.fmmi.usda.gov/irj/portal .

--*

*--Instructions for Creating New Product Requests (Continued)

C County Office Instructions (Continued)

Step	Instructions
2	<p>Perform a search for a matching crop product name. Select “Search Requested Products” from the menu.</p>  <p>Notes: To avoid duplication, be aware that the regional crop name may be a synonym for an existing product. For example, the Black-Eyed Susan (<i>Rudbeckia Hirta</i>) is also known as Brown Betty, Brown Daisy, Poorland Daisy, etc.</p> <p>To ensure that a new product is being requested instead of a duplicate, perform an Internet search on the product and check with local Ag Extension services and universities.</p>
3	<p>Compile supporting documentation for the new product request.</p> <p>Note: The supporting documentation should, at a minimum, specify the following:</p> <ul style="list-style-type: none"> • crop or type is not currently listed in Product Master under another name or synonym • differences between the new product being requested and the existing products in Product Master or in CVS Reports • differences in the characteristics of the product being requested, such as prices and yields • number of producers attempting to report the new product and number of reporting acres for each producer. <p>Attach supporting documentation; including acres, yields, prices, and authoritative source information about the product; to the request.</p> <p>Note: If another State or county has already requested the same product and the request is already in review, a County Office may include additional notes and supporting documentation from their county to the pending request.</p> <p>Example: A producer in State A-County A has reported acreage on “Cinderella Pumpkins” and the County Office has determined that this is a unique product that is not currently listed in Product Master or available for acreage reporting. Before submitting a new product request, the PT in State A-County A performs a search and reviews the existing requested products in CRM. The PT finds a pending new product request for “Cinderella Pumpkins” that was submitted 3 workdays before in State B-County B. Rather than submit a second request for the same product, the PT from State A-County A adds additional notes and supporting documentation to the existing request.</p>

--*

***--Instructions for Creating New Product Requests (Continued)**

C County Office Instructions (Continued)

Step	Instructions
4	Select “County Office Completed by” in the “Partner Functions” transaction block, and verify that the name of the County Office employee completing the request is loaded.
5	E-mail or call the State Office notifying them of the new request pending State Office review. Note: The new product request is not a workflow transaction and will not automatically be sent to another FSA employee to take action. An e-mail or telephone call is required to notify the next level to review the request. Once a new product request has been submitted, it cannot be deleted (but it may be withdrawn).

D State Office Instructions

The following are the instructions for State Offices.

Step	Instructions
1	Navigate to MIDAS CRM-Product Master and open Product Master located at https://mprdep.fmmi.usda.gov/irj/portal .
2	Use the “Search Requested Products” query in CRM-Product Master to locate the pending new product request.
3	Review the information provided by the County Office in the request.
4	Enter the reason for the approval or rejection in the “Note” section, and attach additional supporting documentation as necessary. Note: State Offices must ensure that additional supporting documentation to the existing request is complete; such as acres and/or yields specific to their region.
5	Edit the “Partner Functions” transaction block, select “State Action Completed by”, and load the name of the reviewing State Office employee.
6	Edit the Interaction Log Details and change the status code to “State Approved” or “State Rejected”. If the request is: <ul style="list-style-type: none"> • rejected by the State Office, e-mail the requesting County Office to notify them of the decision • approved by the State Office, send it to the National Office for review by e-mail to RA.FSA.DCWA2.ppb@wdc.usda.gov.

--*

***--Accessing CVS and Other Data**

A CVS Access Instructions

The following table describes how to access CVS.

Note: Always access CVS using Internet Explorer.

Step	Action
1	Access the FSA Intranet FSA Applications at http://fsaintranet.sc.egov.usda.gov/fsa/applications.asp .
2	From the FSA Intranet Screen, under “FSA Applications”, “Applications Directory”, CLICK “A-C”, and “CVS-Compliance Validation System”.
3	On the Compliance Validation System (CVS) Home page, CLICK “CVS Login”.
4	CLICK “CVS Reports”.
5	In the “Program Year” drop-down box, select the desired year.
6	Select the desired report type using the radio button and CLICK “Submit”.
7	CLICK “Open” to view the file. If desired, save the file in an Excel format and to a location of choice.

--*

