

# TASK ORDER REQUEST FOR PROPOSAL

OPTION YEAR 2012

SMALL AREA CONTRACT (SAC)  
AERIAL PHOTOGRAPHY AND SCANNING SERVICES

**Task Order Solicitation Number: SAC-TO-2-12-1**

**Task Order Issue Date: 16-DEC-2011**

**Proposal Due Date: 18-JAN-2012**



U.S. DEPARTMENT OF AGRICULTURE  
FARM SERVICE AGENCY  
AERIAL PHOTOGRAPHY FIELD OFFICE

## NOTICE TO OFFEROR

Proposals submitted in response to this RFP must be identified with the following information labeled on the outside of the mailing package:

SOL.NO: SAC-TO-2-12-1

DUE DATE: 18-JAN-2012, 4:30 PM

RECEIVING OFFICE: CONTRACTING

Mail To: AERIAL PHOTOGRAPHY FIELD OFFICE  
CONTRACTING OFFICER  
2222 WEST 2300 SOUTH  
SALT LAKE CITY UTAH 84119-2020

## NOTICE TO OFFERORS :

PLEASE NOTE THE FOLLOWING SPECIAL TASK ORDER INSTRUCTIONS:

This simplified task order RFP is issued under the First Option Year covering the 2012 performance period, under the multi-award fixed-price IDIQ contract (USDA-NRCS-2-11).

There are three (3) separate projects in this task order: 1. CONUS, 2. Hawaii, and 3. Puerto Rico & VI. The CONUS and Hawaii projects contain both NRI sites and SLI exposures; the Puerto Rico & VI project contains only NRI Sites.

Scanned imagery for each program type (NRI or SLI) shall be submitted on separate hard drives. No more than one (1) program type may be placed on a hard drive. See Paragraph 2.4, Page 4.

NRI Site Scans may be submitted as **partial counties**. NRI and SLI Film Transparencies, and SLI Scans require submission as full counties. See Paragraph 4.5(a)(1-3), Pages 9 and 10.

Pricing for each project will be evaluated independently (See Paragraph 5.7, Page 13). Task Order awards will be made based on procedures established in Section L-3.1 of the contract.

This RFP is subject to the Availability of Funds Clause (FAR 52.232-18), See Paragraph 5.4, Page 12.

TASK ORDER REQUEST FOR PROPOSAL (RFP)

PART I – PRICING PROPOSAL

**TASK ORDER RFP - SMALL AREA CONTRACT**

1.0 AERIAL PHOTOGRAPHY SERVICES

Furnish aerial photography and all related services and supplies in accordance with the requirements, specifications, terms, conditions, clauses, and provisions specified herein and in the original indefinite-delivery, indefinite-quantity contract, effective for the periods stated in the schedule. The Government’s proposed project areas, quantities, and other parameters listed in Paragraphs 1.1 through 1.3 are subject to change through the negotiation process of selecting the “Best Value” source for task order award.

1.1 Pricing Proposal – Project 1, Continental United States (CONUS) NRI/ SLI

PROJECT 1 - 2012 CONUS AERIAL PHOTOGRAPHY AND SCANS OF THE NATIONAL RESOURCES INVENTORY (NRI) SITES AND STEWARDSHIP LAND IMAGERY (SLI) EXPOSURES			
COMPANY NAME:		AUTHORIZED SIGNATURE:	
PROJECT 1 - PRICING PROPOSAL			
TOTAL QUANTITY OF SITES/EXPOSURES/SCANS	UNIT	UNIT PRICE	TOTAL AMOUNT
	NRI SITE	\$	\$
	NRI SCAN	\$	\$
	SLI EXP	\$	\$
	SLI SCAN	\$	\$
GRAND TOTAL			\$
<p align="center"><b><u>PRICING PROPOSAL INSTRUCTIONS:</u></b></p> <p>In the space provided below, or on a separate paper, or delineated on a map, indicate by state(s) the NRI sites and SLI exposures proposed in your offer. <b>You must confirm your proposed state(s)</b> by marking the appropriate boxes on the next page, <u>Section 1.1 Contract Pricing Proposal – Project 1, CONUS NRI/SLI – continued, State Description, Quantities, and Check List.</u></p> <p><b>PLEASE NOTE: The minimum unit of offer is a complete state including all NRI sites, SLI exposures, and associated scans within that state.</b></p>			

## 1.1 Pricing Proposal – Project 1, CONUS NRI/SLI - continued

### State Description, Quantities, and Check List

The following are state NRI site and SLI exposure quantities for the 2012 CONUS requirements. Please mark the appropriate space provided below (Check Box) next to the state(s) you are offering in your task order proposal. A brief description of your proposed area is required in Section 1.1, of the previous page.

CHECK BOX	STATE	NRI SITES	SLI EXPS	TOTAL (SITES+EXPS)	CHECK BOX	STATE	NRI SITES	SLI EXPS	TOTAL (SITES+EXPS)
<input type="checkbox"/>	ALABAMA	1,386	146	1,532	<input type="checkbox"/>	NEVADA	1,062	6	1,068
<input type="checkbox"/>	ARIZONA	744	21	765	<input type="checkbox"/>	NEW HAMPSHIRE	504	90	594
<input type="checkbox"/>	ARKANSAS	1,404	1,336	2,740	<input type="checkbox"/>	NEW JERSEY	605	33	638
<input type="checkbox"/>	CALIFORNIA	2,232	618	2,850	<input type="checkbox"/>	NEW MEXICO	1,527	84	1,611
<input type="checkbox"/>	COLORADO	1,808	338	2,146	<input type="checkbox"/>	NEW YORK	1,630	1,003	2,633
<input type="checkbox"/>	CONNECTICUT	457	49	506	<input type="checkbox"/>	NORTH CAROLINA	1,572	300	1,872
<input type="checkbox"/>	DELAWARE	299	65	364	<input type="checkbox"/>	NORTH DAKOTA	2,055	790	2,845
<input type="checkbox"/>	FLORIDA	1,970	325	2,295	<input type="checkbox"/>	OHIO	1,625	413	2,038
<input type="checkbox"/>	GEORGIA	1,644	112	1,756	<input type="checkbox"/>	OKLAHOMA	1,578	422	2,000
<input type="checkbox"/>	IDAHO	1,748	89	1,837	<input type="checkbox"/>	OREGON	1,588	310	1,898
<input type="checkbox"/>	ILLINOIS	2,219	671	2,890	<input type="checkbox"/>	PENNSYLVANIA	1,791	242	2,033
<input type="checkbox"/>	INDIANA	1,503	798	2,301	<input type="checkbox"/>	RHODE ISLAND	294	1	295
<input type="checkbox"/>	IOWA	1,734	1,663	3,397	<input type="checkbox"/>	SOUTH CAROLINA	1,244	584	1,828
<input type="checkbox"/>	KANSAS	2,014	405	2,419	<input type="checkbox"/>	SOUTH DAKOTA	1,904	1,257	3,161
<input type="checkbox"/>	KENTUCKY	1,444	387	1,831	<input type="checkbox"/>	TENNESSEE	1,511	275	1,786
<input type="checkbox"/>	LOUISIANA	1,954	1,856	3,810	<input type="checkbox"/>	TEXAS	4,933	418	5,351
<input type="checkbox"/>	MAINE	694	22	716	<input type="checkbox"/>	UTAH	938	43	981
<input type="checkbox"/>	MARYLAND & DC	1,025	92	1,117	<input type="checkbox"/>	VERMONT	552	151	703
<input type="checkbox"/>	MASSACHUSETTS	612	101	713	<input type="checkbox"/>	VIRGINIA	1,745	72	1,817
<input type="checkbox"/>	MICHIGAN	2,045	556	2,601	<input type="checkbox"/>	WASHINGTON	1,388	290	1,678
<input type="checkbox"/>	MINNESOTA	2,375	832	3,207	<input type="checkbox"/>	WEST VIRGINIA	839	74	913
<input type="checkbox"/>	MISSISSIPPI	1,671	1,177	2,848	<input type="checkbox"/>	WISCONSIN	1,826	761	2,587
<input type="checkbox"/>	MISSOURI	2,138	1,404	3,542	<input type="checkbox"/>	WYOMING	1,209	225	1,434
<input type="checkbox"/>	MONTANA	1,649	160	1,809					
<input type="checkbox"/>	NEBRASKA	1,766	742	2,508					

**TOTAL NRI SITES: 72,455 – CONUS**  
**TOTAL SLI EXPS: 21,809 – CONUS**  
**Project 1 GRAND TOTAL: 94,264 – CONUS**

<p>Note: Task Order total quantities including Project 2: Hawaii, and Project 3: Puerto Rico &amp; VI:</p> <p><b>TOTAL NRI SITES: 73,280 Sites</b></p> <p><b>TOTAL SLI EXPS: 21,811 Exposures (13,114 Easements)</b></p> <p><b>GRAND TOTAL: 95,091 Sites and Exposures</b></p>
--

1.2 Pricing Proposal – Project 2, Hawaii NRI/SLI

<b>PROJECT 2 - 2012 HAWAII AERIAL PHOTOGRAPHY AND SCANS OF THE NATIONAL RESOURCES INVENTORY (NRI) SITES AND STEWARDSHIP LAND IMAGERY (SLI) EXPOSURES</b>			
COMPANY NAME:		AUTHORIZED SIGNATURE:	
<b>PROJECT 2 - PRICING PROPOSAL</b>			
TOTAL QUANTITY OF SITES/EXPOSURES/SCANS	UNIT	UNIT PRICE	TOTAL AMOUNT
375 NRI SITES	NRI SITE	\$	\$
	NRI SCAN	\$	\$
2 SLI EXPOSURES	SLI EXP	\$	\$
	SLI SCAN	\$	\$
GRAND TOTAL:			\$
<b><u>PRICING PROPOSAL INSTRUCTIONS:</u></b>			
Enter your proposed unit price and total amount in the spaces provided above. <b>PLEASE NOTE: The minimum unit of offer is the complete state including all NRI Sites, SLI Exposure(s), and associated scans.</b>			

1.3 Pricing Proposal – Project 3, Puerto Rico & US Virgin Islands (NRI only)

<b>PROJECT 3 - 2012 PUERTO RICO AND US VIRGIN ISLANDS AERIAL PHOTOGRAPHY AND SCANS OF THE NATIONAL RESOURCES INVENTORY (NRI) SITES</b>			
COMPANY NAME:		AUTHORIZED SIGNATURE:	
<b>PROJECT 3 - PRICING PROPOSAL</b>			
TOTAL QUANTITY OF SITES/SCANS	UNIT	UNIT PRICE	TOTAL AMOUNT
450	NRI SITE	\$	\$
	NRI SCAN	\$	\$
GRAND TOTAL:			\$
<b><u>PRICING PROPOSAL INSTRUCTIONS:</u></b>			
Enter your proposed unit price and total amount in the spaces provided above. <b>PLEASE NOTE: The minimum unit of offer is all NRI Sites, including scans, within Puerto Rico and the Virgin Islands project areas.</b>			

## 2.0 TASK ORDER REQUIREMENTS

The general scope of this task order is to procure vertical, high resolution, natural color, analog aerial photography and associated digital scans for the inventory of natural resources for the National Resource Inventory program (NRI) and to monitor Stewardship Land Imagery (SLI) easement programs including wetland protection and restoration efforts on the Wetland Reserve Program (WRP). The United States Department of Agriculture (USDA), Natural Resources Conservation Service (NRCS) shall use the imagery acquired under this task order to collect, measure and monitor natural resource data by means of photo interpretation, change detection and use of Geographic Information Systems (GIS) technologies.

### 2.1 Task Order Performance Period

The performance period for the acquisition and delivery of NRI/SLI aerial photography is: **Date of Award (February 2012) through December 31, 2012.**

### 2.2 Intended Use of Photography

The primary use of the aerial photography is for photo interpretation, area and point delineation, monitoring, and Geographic Information Systems (GIS) measurements in support of multiple natural resource inventory and easement management programs.

### 2.3 Location of Work

The 2012 Small Area Projects cover a sample of 72,455 NRI Sites and 21,809 SLI Exposures (covering 13,113 easements) located in the 48 conterminous states, 375 NRI Sites and 2 SLI Exposures (1 easement) in Hawaii, and 450 NRI Sites in Puerto Rico/US Virgin Islands. Please refer to Exhibit 2 (a-c) for 2012 NRI Locations, Exhibit 3 for 2012 Stewardship Land Imagery Locations, and Attachment E for 2012 Oversized NRI Site Location Maps, and. The NRI Sites and SLI Exposures share the same photo periods.

### 2.4 Contract Deliverables

The deliverables for the NRI and SLI task order consist of the following:

- (a) **One (1) original color positive film transparency of each site or exposure, cut and sleeved,**
- (b) **One (1) digital scan of each film transparency,**
- (c) **Scan Data File(s) for scanned imagery,**
- (d) **Packing slip(s) completed as instructed. See Exhibit 5.**

Only one (1) aerial film image and its associated scan shall be provided for each of the NRI Sites and SLI Exposures identified in the exposure data that will be provided by the government.

Scanned imagery for each program type (NRI or SLI) shall be submitted on separate hard drives. No more than one (1) program type image scan and associated data files may be placed on a hard drive.

### 2.5 Size of NRI Sample Sites and SLI Easements

Nationally, the nominal size of a NRI sample site is approximately 160 acres (1/4 square mile). Exceptions to the nominal size include:

- (a) The 13 Northeastern states where the site size is 20 seconds of latitude by 30 seconds of longitude. This corresponds to a size from approximately 97 acres in Maine to 113 acres in Virginia. In Louisiana the NRI Site size is 500 meters by 500 meters, or 61.8 acres.
- (b) Various western states have 40 acre sites of irrigated areas and 640 acre sites of relatively homogeneous areas containing large tracts of range, forest, or barren land.
- (c) Other exceptions also exist, with some NRI Sites either being larger than 640 acres or smaller than 40 acres.

Nationally, the SLI easements range in size from less than one (1) acre to as much as 15,382 acres and may require from one exposure to multiple exposures to provide required photographic coverage.

## 2.6 Project Flight Plan Description – NRI Sites

- (a) All NRI Sites of 500 acres or less (300 acres or less in California, Kansas, Missouri and South Dakota; 200 acres in UT) shall be flown at flight altitudes designed to achieve a nominal photographic scale of 1:7,920, with the nominal flight altitude above ground of 1,207 meters (3,960 feet) with a 6” focal length lens.
- (b) For oversize NRI Sites of 500 acres or more, (300 acres in CA, KS, MO or SD; 200 acres in UT) the nominal photographic scale is 1:12,000, with the nominal flight altitude above ground elevation of 1,829 meters (6,000 feet). For oversize NRI Sites greater than 900 acres within the conterminous 48 states, the nominal photographic scale is 1:15,840, with the nominal flight altitude above ground elevation of 2,414 meters (7,920 feet). There are approximately 1,844 over-size NRI Sites located in the following states:

STATE	QUANTITY	MIN. ACRES	MAX ACRES
CALIFORNIA	3	327	460
KANSAS	3	342	523
MISSOURI	12	313	403
NEBRASKA	225	532	773
NEW MEXICO	295	506	1570
SOUTH DAKOTA	431	301	761
UTAH	374	207	882
WYOMING	501	517	1084
<b>TOTAL QUANTITY</b>	<b>1,844</b>		

- (c) Deviation from the specified flight altitude shall not exceed 2% low or 3% high. See State NRI Site & SLI Exposure Information for minimum and maximum ground elevations (Attachment D).
- (d) NRI Site Flight Requirements:
  - (1) Flight Orientation: North - South or East - West
  - (2) Allowable Horizontal Deviation from Site Centroid: 109 meters (356 feet).
  - (3) The NRI Site Centroids shall be identified by latitude - longitude coordinates based on NAD 1983, and expressed in decimal degrees with five (5) decimal places of precision (31.50255, 87.10906).

## 2.7 Project Flight Plan Description – SLI Exposures

- (a) All SLI Areas shall be flown at flight altitudes designed to achieve a nominal photographic scale of 1:7,920, with the nominal flight altitude above ground of 1,207 meters (3,960 feet) with a 6” focal length lens. Deviation from the specified flight altitude shall not exceed 2% low or 3% high. Elevations for each of the SLI areas/exposures will be provided upon award
- (b) The Government will provide the official flight plans indicating centroid locations of all exposures with flight line data covering the SLI Easement Areas. The official flight plan data will be provided in a set of shapefiles. The flight plans have been designed to provide physical coverage of each of the easements. Physical coverage is defined as coverage of each easement with at least 20% sidelap and 20% endlap where more than one (1) image is required. In addition to complete coverage of each easement, a minimum buffer zone of 1,320 feet, (402 meters) or (1/4 mile) is included beyond the actual boundary.
- (c) The Government will provide a shape file identifying the SLI Easement boundaries covering the 13,114 individual easements that are associated with this project.
- (d) Area Flight Plan Specifications:
  - (1) Flight Orientation: Preferred North – South or East – West.  
*Note:* There are areas that require non-preferred (diagonal) flight orientation. Such non-preferred orientation has been kept to the minimum practicable.
  - (2) The SLI Exposure Centroids within any state will be identified by county FIPS, program (SLI) and the individual centroid number. Their location is provided in latitude – longitude coordinates based on NAD 1983, and expressed in decimal degrees with six (6) decimal places of precision (31.502550, -87.109067).
  - (3) The Exposure Centroid Numbers [Photo ID(s)] have been assigned by NRCS and begin at one (1) in each individual county. The numbering may not be consecutive within that county.
  - (4) A shapefile containing the individual flight lines for any state will be provided to assist in identifying and orienting the flight lines for that state. Flight line numbering varies by state.
  - (5) Contractors will be provided an ASCII comma delimited text (.txt) file containing a list of **only** the exposure centroids that pertain to that contractor’s award. *This shall be the authoritative listing of the SLI exposures required to be flown for each state in the awarded contract.*

## 2.8 Nominal Photographic Scales:

- (a) Standard Scales: 1:7,920, 1:12,000, and 1:15,840. Predominately 1:7,920 scale.
- (b) Non-Standard Scales: 1:24,000 to 1:40,000, as required.
- (c) Required non-standard scale(s) will be specified where needed.

## 2.9 Approximate Photographic Periods:

- (a) First Photo Period

Nearly all states and territories contain one or more counties with front-end extended photographic acquisition periods. These first photo period areas are designed to allow earlier photo acquisition windows for non-agricultural terrain. The First Photo Period ends when the State Photo Period(s) begins. See Exhibit 1, 2012 State Photo

Periods.

(b) State Photo Periods

There are 26 separate photographic acquisition periods, covering 48 United States, that are designed to capture specific crop types during their prime growing season. These photo periods generally follow state boundaries (with exceptions in CA and TX) and range between the dates of March 1 through September 30, 2012. Five (5) states have identified 'Priority' counties. These counties shall be flown before other counties within each of the states as ground and weather conditions permit. NRI Sites with elevations above 2,438 meters (8,000 feet) have been assigned an allowable alternate flying season of August 1, through September 30, 2012 where remaining snow below the timberline will be considered acceptable. Hawaii, Puerto Rico, and the US Virgin Islands may be flown within the task order performance period (Date of Award through December 31, 2012) as ground and weather conditions permit. See Exhibit 1, 2012 State Photo Periods.

(c) Refer to the Contract, Section F-5, Performance of the Work.

2.10 Minimum Sun Angle: 30 Degrees

2.11 Aerial Film Camera:

(a) Lens Focal Length(s).

(1) Nominal Lens Focal Length: 6 inch (153mm);

(2) Other Lens Focal Length: 8¼ inch (210mm) and 12 inch (305mm).

(b) Filter: Antivignetting.

(c) See Attachment A of the Contract, USDA Aerial Camera Specifications.

2.12 Aerial Film:

(a) Aerial Film: Color Positive Aerial Film (Brand Names: Agfa Aviphot Chrome 200 PEI, or equivalent).

(1) Every film transparency shall be cut to the following dimensions:

(i) Maximum Length: 25.4 cm (10 inches) long,

(ii) Standard Film Width: 24.1 cm (9.5 inches) wide,

(2) The uniform cut-film dimensions are designed to standardize the film transparency storage requirements.

(b) Refer to Section C-5 of the Contract, Aerial Film.

2.13 Film Titling:

(a) Every exposure shall be titled in accordance with the format and instructions specified in the contract. Refer to Section C-6 of the Contract, Titling of Aerial Photography.

(b) Agency Designators: USDA-NRCS.

(c) Site Identification Codes for the 1) NRI Sites and 2) SLI Exposure Centroid names will be provided upon award.

(d) Automatic electronic titling may be permitted upon Contracting Officer's approval.

## 2.14 Aerial Film Scanning:

- (a) The general requirement for film scanning is 40 microns, approximately 600 dots per inch (DPI) using a photogrammetric quality scanner.
- (b) The scans are to be delivered as Tagged Image Format File(s) (.tif(s)) on media indicated. Refer to Section C-7 of the Contract, Aerial Photography Scanning.

## 3.0 GOVERNMENT-FURNISHED PROPERTY

Pursuant to the Government-Furnished Property (GFP) clause (see Section I-2 of the contract) the Government shall furnish the item(s) of property listed below as GFP to the Contractor.

### 3.1 Exposure Data – NRI Sites

The Contractor will be furnished upon award, for the states awarded, one (1) data text file containing the official Exposure Data and one (1) shapefile set showing the centroid location and boundary of each NRI site. The data text file contains latitude/longitude coordinates and NRI site identification data. The data shall be furnished by the government as represented by the following sample data set:

State	County	Poly-id Number	Latitude	Longitude	Elev(Ft)	Acres	Start	End	Priority
AL	Autauga	01035_040402R	32.38066	-86.66086	308	171.345	20120601	20120630	
CT	Hartford	09003_080402R	42.01980	-72.83128	446	102.622	20120701	20120815	
IN	Grant	18053_020102R	40.44244	-85.86891	846	159.695	20120701	20120930	
SC	York	45091_010101R	34.86437	-81.42939	499	158.527	20120515	20120731	Priority

The shapefile set contains the standard ESRI files (.dbf, .prj, .sbn, .sbx, .shp, and .shx.)

### 3.2 Exposure and Flight Line Data – SLI Exposures

The Contractor will be furnished upon award the following data:

- (a) Exposure Centroids: An ASCII comma delimited text (.txt) file will be provided containing a list of **only** the exposure centroids pertaining to each contractor's award. (*State Abbreviation\_SLI\_12.txt*) *This shall be the authoritative listing of the SLI exposures required to be flown for each awarded contract.*
- (b) SLI Flightlines: The shapefile set (.dbf, .prj, .shp, .shx and .txt files) identifies the flight lines that have been assigned to this task order. The .txt file is a tab delimited text file which identifies the beginning and ending points of each of the flight lines, their nominal elevation above mean ground level, the nominal focal length of the lens in millimeters and the nominal scale of the imagery. The beginning and ending points are in degrees, minutes, seconds, and decimal seconds carried out to three (3) significant decimal places. (*2012\_(State Abbreviation)\_fln*)
- (c) SLI Shapefiles: The shapefile set (.dbf, .prj, .sbn, .sbx, .shp, and .shx files) outlines the individual easement areas of this task order. (*easements\_10\_2011NAD83*)
- (d) 2012 SLI Area Easement Locations (.pdf & .jpg) – a reference map of the project in .PDF & .JPG formats.
- (e) CNTY100KCOAST – Authoritative County Shapefile Set (.dbf, .prj, .sbn, .sbx, .shp, and .shx files)
- (f) STATE100KCOAST – Authoritative State Shapefile Set (.dbf, .prj, .sbn, .sbx, .shp, and .shx files)

### 3.3 Packing Slips

Packing slips shall be provided for each state at time of award. These contain a listing by state and county of the quantities of NRI Sites and SLI exposures associated with each state. The instructions for filling them out are included in the header for the slip. See Exhibit 5, Packing Slip.

## 4.0 DELIVERY SCHEDULE

### 4.1 Original Materials - Delivery Schedule

All delivery materials required for all original and USDA ordered reflight aerial photography for a project shall be shipped as soon as completed but not later than 15 calendar days after the photographic season has ended, or any season extension thereof. Prompt delivery of all materials will better assure the timely inspection and prompt payment for accepted materials.

### 4.2 Remake Materials - Delivery Schedule

All remake materials requested by USDA shall be shipped as soon as possible after correction is made, but no later than 15 days after receipt in the Contractor's facility of the materials or data required to make the corrections. Signed delivery receipts will be required to verify date of receipt of such data or materials by the Contractor.

4.3 CONUS Areas: The delivery requirements for the 2012 NRI and SLI projects are designed to achieve a uniform and consistent acquisition and delivery of materials from contractors. This is to facilitate a required steady flow of NRI Site and SLI Exposure data, both film and scans, to the three NRCS Remote Sensing Labs for processing. In order to accomplish this objective, the timely acquisition of all first photo period and state photo period counties, and the prompt delivery of all materials is essential. Punctual delivery of materials will better assure timely inspection, prompt payment, and continuous delivery to the NRCS.

4.4 Hawaii and Puerto Rico/US Virgin Islands: The required delivery schedule for each of these non-CONUS areas is 30 days after the end of the flying season, or extensions thereof. The *recommended* delivery schedule is 15 days after complete acquisition of all required sites/exposures identified within a single Federal Information Processing Standard (FIPS) code.

### 4.5 2012 Film Transparencies:

#### (a) Delivery Schedule for Film Transparencies:

- (1) Deliver full county coverage of all NRI sites and SLI exposures at 15 day intervals throughout each flying season. Where all photography has not been acquired in a county designated with a First Photo Period, the photography shall continue to be acquired within the State Photo Period upon the contractor's request and Government approval of a season extension. NOTE: Timely acquisition of the first photo period imagery is a factor in contractor performance evaluation.

- (2) The Government requests that every effort be made to provide both film and scanned images within the same delivery.
- (3) Final delivery of all sites shall occur no later than 15 calendar days after the First Photo Period has ended for First Photo Period imagery or 15 calendar days after the State Photo Period has ended, or any season extension thereof.
- (b) Delivery Schedule for Scanned Imagery
- (1) The NRI imagery scans may be delivered as **partial county coverage** to expedite delivery to the customer. The SLI imagery scans shall be delivered as full county coverage. It is the government's preference for contractors to coordinate, as closely as possible, the delivery of associated film and scanned products to avoid any delay in the inspection process.
- (2) Delivery Media: NRI and SLI scanned imagery shall be delivered on industry standard Serial ATA (Version I or II) Hard Drive Disks (HDs) in either 3.5 inch or 2.5 inch form factors. These shall be unenclosed (bare) drives packaged in anti-static sleeves, and shipped in containers sufficient to prevent damage to the drives. The files shall not be write-protected nor require an 'administrative password' to access them. The hard drive may contain more than one state.
- (3) The required final delivery date for all scanned imagery shall be 15 calendar days after the end of the last photographic period or any extension thereof.
- (c) 2012 First Photo Periods:

The following delivery schedule shows the ***final delivery date***, established 15 days from the end of the First Photo Period dates:

State Group	First Photo Period Counties Photo Acquisition Dates	Required Date of Final Delivery
GA NC SC VA	NTP – March 15, 2012	March 30, 2012
FL	NTP – April 15, 2012	April 30, 2012
CA(W)	NTP – May 1, 2012	May 16, 2012
KS, NM, AZ	NTP – May 15, 2012	May 30, 2012
ID MS NV OH OR TX(E) UT WY	NTP – June 15, 2012	June 30, 2012
CO CT IL IN KY ME MA MI MN MO NH OK RI TN TX(W) WI	NTP – July 1, 2012	July 16, 2012
NY VT WV	NTP – July 15, 2012	July 30, 2012
AL CA(N) TX(S) ND SD WA	NTP – June 1, 2012	June 16, 2012
AR LA NE PA	NTP – August 1, 2012	August 16, 2012
MD&DC NJ	NTP – August 15, 2012	August 30, 2012

*NTP = Notice to Proceed (Estimated prior to March 1, 2012)*

(d) 2012 State Photo Periods:

The following delivery schedule shows the *final delivery date*, established 15 days from the end of the State Photo Period dates:

State Group	State Photo Period Counties Photo Acquisition Dates	Required Date of Final Delivery
1. GA NC SC VA	March 15 – May 15, 2012	May 30, 2012
2. CA(S)	March 15 – May 31, 2012	June 15, 2012
3. FL	April 15 – June 15, 2012	June 30, 2012
4. CA(W)	May 1 – July 31, 2012	August 15, 2012
5. KS	May 15 – July 15, 2012	July 30, 2012
6. NM	May 15 – August 15, 2012	August 30, 2012
7. AZ	May 15 – Sept. 30, 2012	October 15, 2012
8. AL	June 1 – June 30, 2012	July 15, 2012
9. TX(S)	June 1 – July 15, 2012	July 30, 2012
10. ND SD	June 1 – July 31, 2012	August 15, 2012
11. WA	June 1 – August 15, 2012	August 30, 2012
12. CA(N)	June 1 – Sept. 30, 2012	October 15, 2012
13. MS	June 15 – July 15, 2012	July 30, 2012
14. ID MT OR NV TX(E) UT	June 15 – July 31, 2012	August 15, 2012
15. WY	June 15 – August 15, 2012	August 30, 2012
16. OH	June 15 – Sept. 30, 2012	October 15, 2012
17. IL MN	July 1 – July 31, 2012	August 15, 2012
18. CO CT OK MA ME RI TX(W) NH	July 1 – August 15, 2012	August 30, 2012
19. IA KY MO TN WI	July 1 – August 31, 2012	Sept.15, 2012
20. IN MI	July 1 – Sept. 30, 2012	October 15, 2012
21. WV	July 15 – August 15, 2012	August 30, 2012
22. NY VT	July 15 – Sept. 15, 2012	Sept. 30, 2012
23. PA	Aug. 1 – Aug. 31, 2012	Sept. 15, 2012
24. AR LA NE	Aug. 1 – Sept. 30, 2012	October 15, 2012
25. DE MD NJ	Aug. 15 – Sept. 15, 2012	Sept. 30, 2012

5.0 ADMINISTRATIVE MATTERS5.1 Annual Representations and Certifications

Contractors shall complete electronic annual representations and certifications at <http://orca.bpn.gov> in conjunction with the required registration in the Central Contractor Registration (CCR) database. Contractors shall submit updates to the Online Representations and Certifications Application (ORCA) as necessary, but at least annually, to ensure they are kept current, accurate, and complete. The representations and certifications are effective until one year from the date of submission or update to ORCA.

Please refer to Section K-1, Annual Representations and Certifications, FAR Clause 52.204-8 of the contract.

## 5.2 Small Business Subcontracting Plan

If applicable, all Contractors, except those certified as a small business concern, shall submit a subcontracting plan that separately addresses subcontracting with small business, veteran-owned small business, service-disabled veteran-owned small business, HUBZone small business concerns, small disadvantaged business and women owned small business concerns. The subcontracting plan shall be included and made a part of the resultant task order award and be negotiated with the Contracting Officer during the task order negotiation period. Failure to submit and negotiate the subcontracting plan shall make the offeror ineligible for award. Please refer to the Contract, Section G-6, Small Business Subcontracting Plan, FAR Clause 52.219-09.

## 5.3 Task Order Ombudsman

The Director of USDA-FSA-Aerial Photography Field Office shall serve as the Task Order Ombudsman and is responsible for reviewing complaints from the contractors and ensuring that all of the contractors are afforded a fair opportunity to be considered for task orders issued under this contract. The Task Order Ombudsman may be contacted at telephone (801) 844-2907, or mail to: Director, APFO, 2222 West 2300 South, Salt Lake City, UT 84119.

## 5.4 Availability of Funds (FAR 52.232-18, April 1984)

Funds are not presently available for this contract. The Government's obligation under this contract is contingent upon the availability of appropriated funds from which payment for contract purposes can be made. No legal liability on the part of the Government for any payment may arise until funds are made available to the Contracting Officer for this contract and until the Contractor receives notice of such availability, to be confirmed in writing by the Contracting Officer.

## 5.5 Non-Discrimination Statement

The U.S. Department of Agriculture (USDA) prohibits discrimination in all its program and activities on the basis of race, color, national origin, age, disability, and where applicable, sex, marital status, familial status, parental status, religion, sexual orientation, genetic information, political beliefs, reprisal, or because all or part of an individual's income is derived from any public assistance program. (Not all prohibited bases apply to all programs.) Persons with disabilities who require alternative means for communication of program information (Braille, large print, audiotape, etc.) should contact USDA's TARGET Center at (202) 720-2600 (voice and TDD). To file a complaint of Discrimination, write to USDA, Director, Office of Civil Rights, 1400 Independence Avenue, SW., Washington, DC 20250-9410, or call (800) 795-3272 (voice) or (202) 720-6382 (TDD). USDA is an equal opportunity provider and employer.

## 5.6 Confidentiality Statement

Site locations of the National Resources Inventory (NRI) are "For Official Use Only" and shall remain confidential. Site locations, represented in either hardcopy or digital form, are available exclusively for use by government authorized personnel conducting resource

inventory activities or other authorized use.

**Before release of exact site locations, offerors must agree to, by signature, the non-disclosure statements contained herein and submit with proposal. (See Exhibit 9, Required Documentation and refer to Section C-1.1(d) of the contract, Non-disclosure Agreement)**

#### 5.7 Project Evaluation

Each of the three projects proposed in this solicitation will be evaluated independently in terms of pricing. The offeror's technical score will be combined with the individual pricing scores to determine ranking for each of the projects. Equipment and other information provided in Section K of the contract solicitation (USDA-NRCS-2-11) shall be used in the evaluation of this task order.

**Please Note: Proposals are due January 18, 2012 at APFO before 4:30 pm MST.**

**LIST OF EXHIBITS AND ATTACHMENTS**

EXHIBIT	DESCRIPTION	PAGE
Exhibit 1	2012 State Photo Periods (1 page)	15
Exhibit 2(a)	2012 NRI CONUS Sample (1 page)	16
Exhibit 2(b)	2012 NRI Hawaii Locations (1 Page)	17
Exhibit 2(c)	2012 NRI Puerto Rico & US Virgin Islands Locations (1 Page)	18
Exhibit 3	2012 Stewardship Lands Sample (1 Page)	19
Exhibit 4	Progress Report (1 page)	20
Exhibit 5	Packing Slip (1 page)	21
Exhibit 6	Required Documentation (Non-disclosure Agreement) (2 pages)	22-23
Attachment D	State NRI Site & SLI Exposure Information (5 pages)	Separate Attachment
Attachment E	2012 Oversized NRI Site Location Maps (10 Pages)	Separate Attachment

### EXHIBIT 1

## 2012 State Photo Periods

Natural Resources Conservation Service

U.S. Department of Agriculture

# State Photo Periods

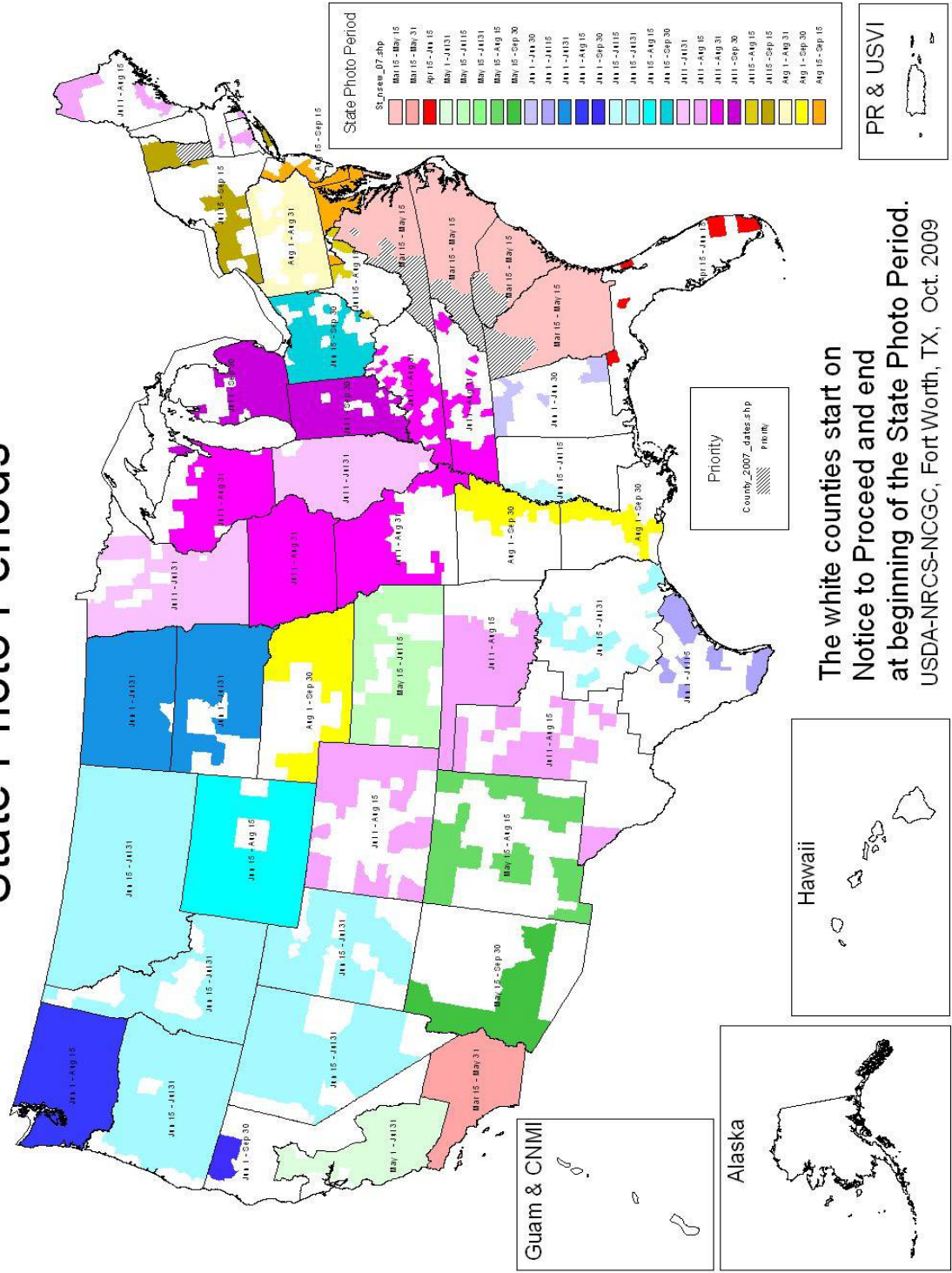


EXHIBIT 2(a)

2012 NRI CONUS Sample (72,455 Sites)

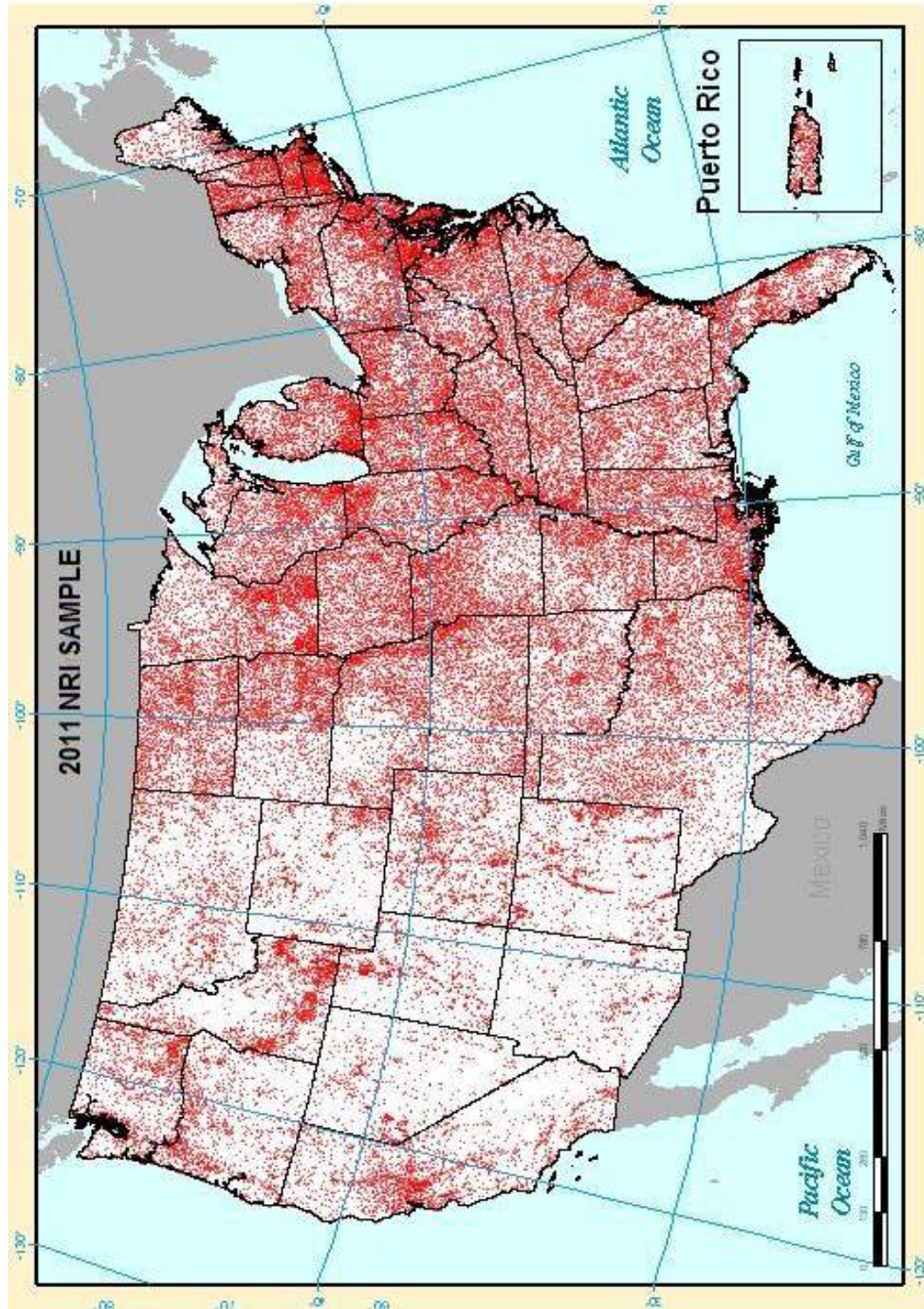
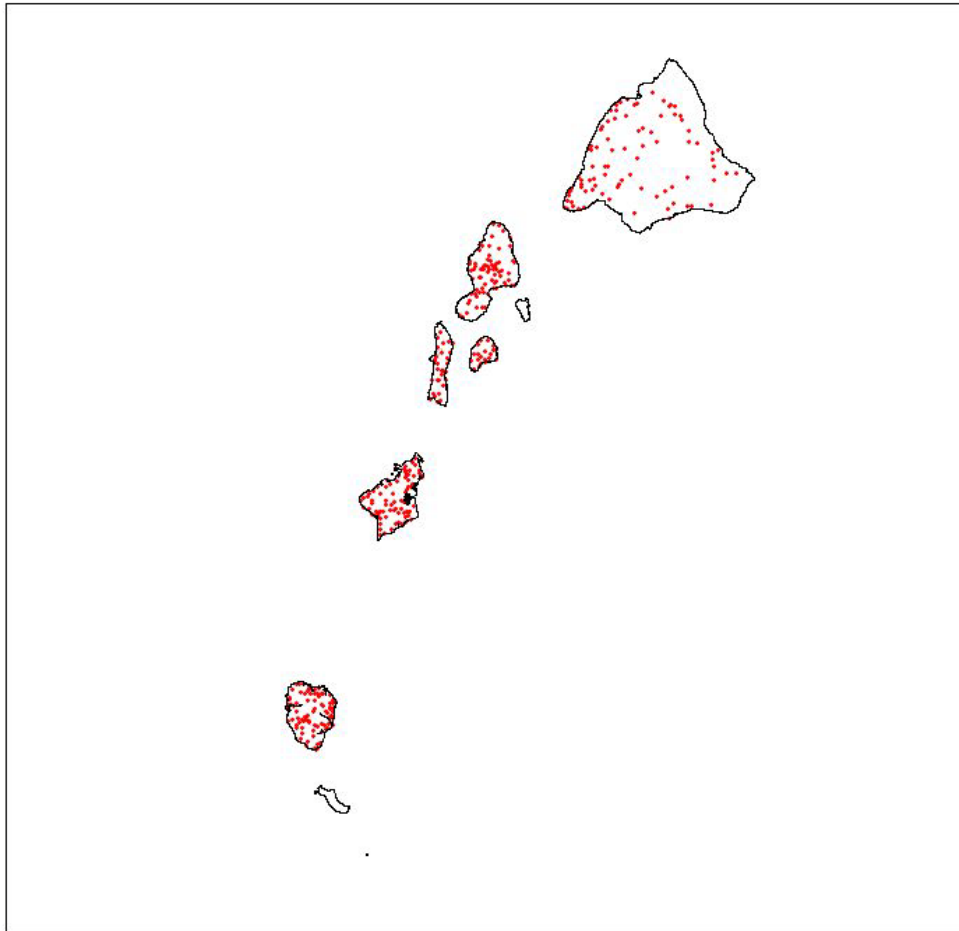


EXHIBIT 2(b)

2012 NRI Hawaii Locations (375 Sites)

Hawaii  
NRI Locations



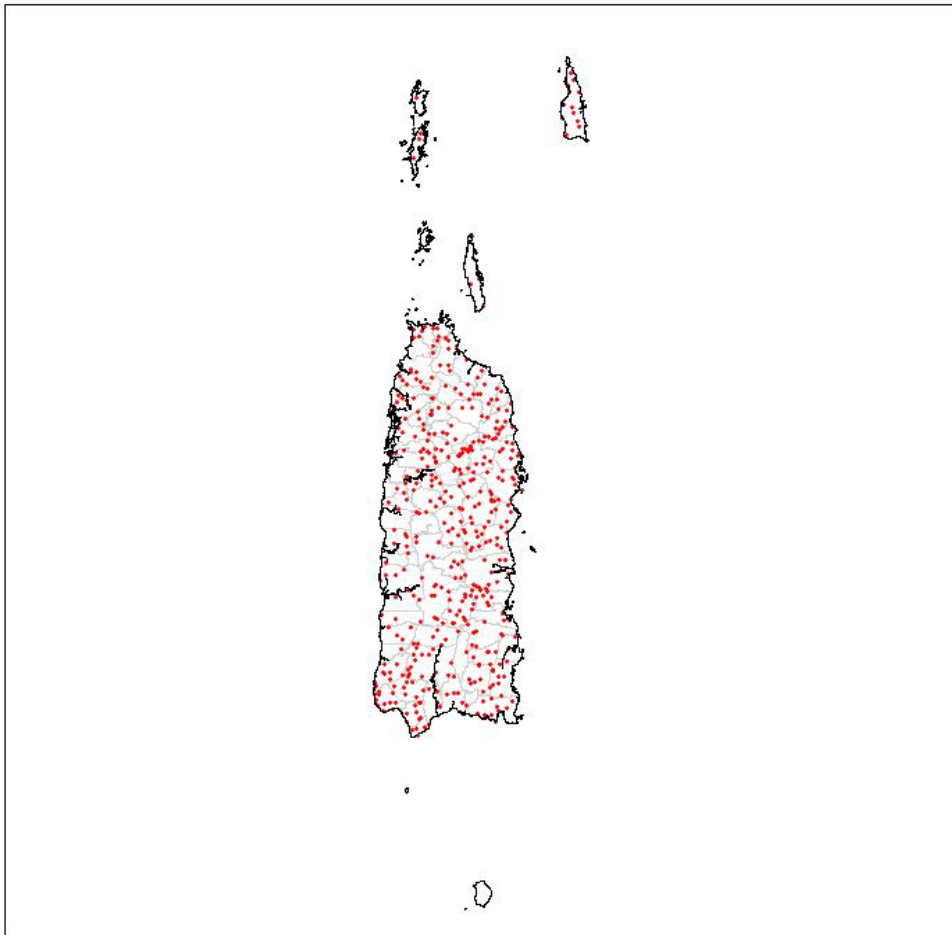
NGMCM, Fort Worth, TX, Nov. 2011

USDA - Natural Resources Conservation Service

EXHIBIT 2(c)

2012 NRI Puerto Rico & US Virgin Islands Locations (450 Sites)

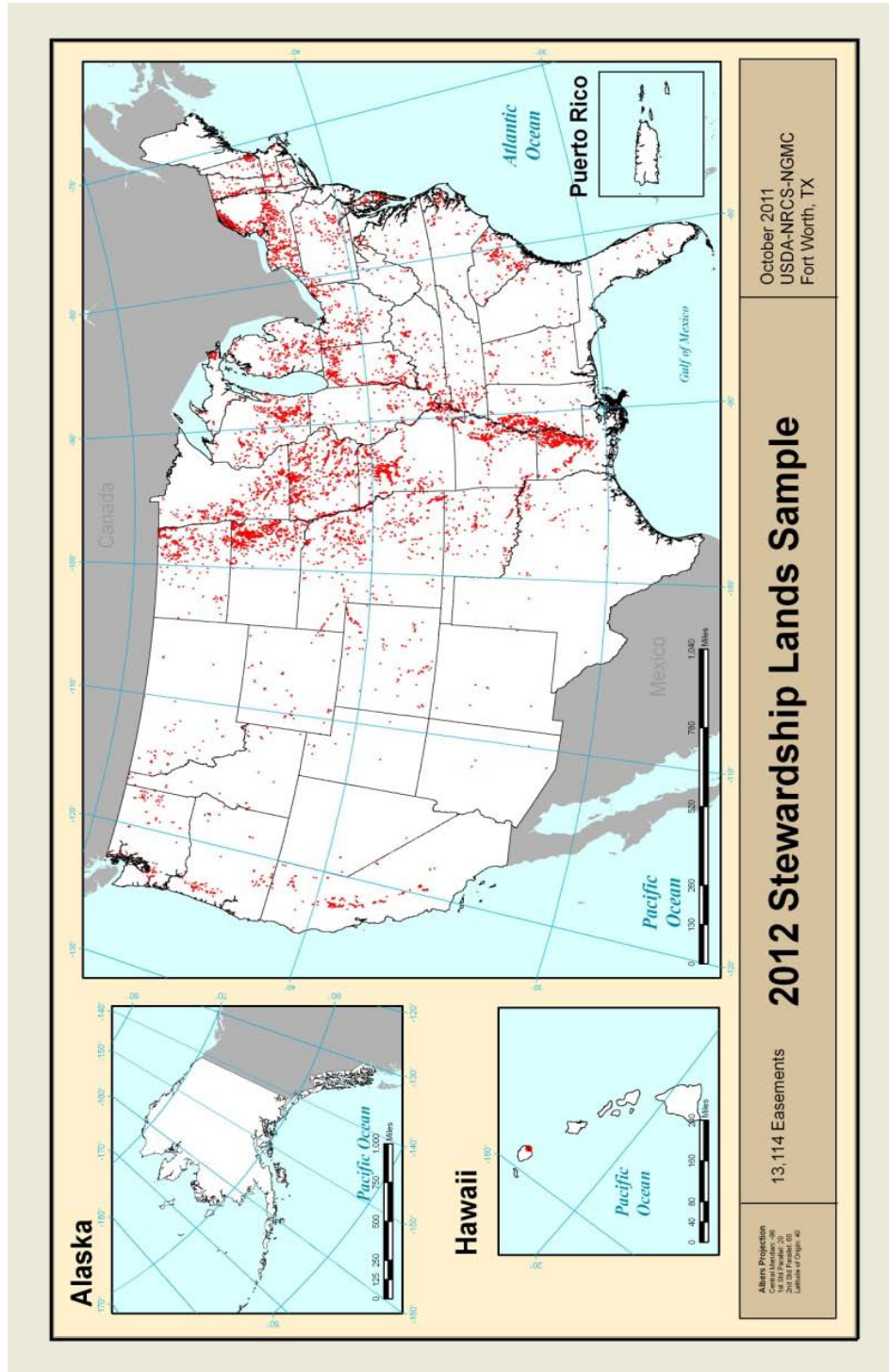
Puerto Rico  
and  
U.S. Virgin Islands  
NRI Locations



USDA - Natural Resources Conservation Service  
NGMC, Fort Worth, TX, Nov. 2011

EXHIBIT 3

2012 Stewardship Lands Sample Locations



2012 SLI Sample: 21,809 SLI CONUS Exposures and 2 Hawaii Exposures covering 13,114 Easements; Total of 21,811 SLI Exposures

EXHIBIT 4

U.S. DEPARTMENT OF AGRICULTURE

**AERIAL PHOTOGRAPHY PROGRESS REPORT****INSTRUCTIONS**

This report shall be prepared only for days that performance is accomplished in acquiring project photography. Reports shall be submitted to the government office E-mail address indicated below no later than the day following performance. Reports shall be submitted in ASCII text format. On separate E-mail reports, a list of NRI Sites flown and SLI exposures flown shall be indicated by their respective identification numbers, and shall reflect only the previous day's performance. A cumulative progress record of all sites acquired shall be maintained by the Contractor.

**2012 NRI PROGRESS REPORT  
SAC-TO-2-12, ITEM #**

**TO:**

Contracting Officer  
Aerial Photography Field Office  
E-mail Address: [NRI.apfo.reports@slc.usda.gov](mailto:NRI.apfo.reports@slc.usda.gov)

**FROM:**

Name  
Company  
Telephone Number

**PERFORMANCE RECORD:**

Date Acquired: 06-JUN-12

NRI Sites Acquired:

01035\_040402R  
01061\_030503R  
01061\_030602R  
01067\_010301B

**2012 SLI PROGRESS REPORT  
SAC-TO-2-12, ITEM #**

**TO:**

Contracting Officer  
Aerial Photography Field Office  
E-mail Address: [WRP.apfo.reports@slc.usda.gov](mailto:WRP.apfo.reports@slc.usda.gov)

**FROM:**

Name  
Company  
Telephone Number

**PERFORMANCE RECORD:**

Date Acquired: 06-JUN-12

SLI Exposures Acquired:

01035\_WRP0004  
01061\_WRP0001  
01061\_WRP0002  
01067\_WRP0001

EXHIBIT 5

PACKING SLIP

STATEMENT OF SHIPMENT FOR 2012 NRI SITES

<p><b>INSTRUCTIONS:</b> This document will accompany all shipments from the contractor. Please complete the requested information at the top of the page and indicate all counties that are included in this shipment with an "X". If quantities submitted for individual counties differ from the quantities listed, then a quantity of NRI Sites acquired for the county(s) should be recorded instead.</p>	
<p>SEND TO: CONTRACTING OFFICER                  USDA-FSA-APFO                  2222 WEST 2300 SOUTH                  SALT LAKE CITY, UT 84119-2020</p>	<p>DATE: _____                  SHIPMENT NUMBER: _____                  TOTAL OF NRI SITES IN SHIPMENT: _____                  TOTAL OF COUNTIES IN SHIPMENT: _____</p>

STATE: ALABAMA  
 TOTAL COUNTIES: 67  
 TOTAL NRI SITES: 1,386

FIPS	COUNTY	NRI SITES	FIPS	COUNTY	NRI SITES		
[ ]	01001	AUTAUGA	10	[ ]	01069	HOUSTON	30
[ ]	01003	BALDWIN	23	[ ]	01071	JACKSON	18
[ ]	01005	BARBOUR	18	[ ]	01073	JEFFERSON	18
[ ]	01007	BIBB	19	[ ]	01075	LAMAR	7
[ ]	01009	BLOUNT	31	[ ]	01077	LAUDERDALE	29
[ ]	01011	BULLOCK	15	[ ]	01079	LAWRENCE	29
[ ]	01013	BUTLER	12	[ ]	01081	LEE	25
[ ]	01015	CALHOUN	13	[ ]	01083	LIMESTONE	25
[ ]	01017	CHAMBERS	22	[ ]	01085	LOWNDES	24
[ ]	01019	CHEROKEE	21	[ ]	01087	MACON	26
[ ]	01021	CHILTON	23	[ ]	01089	MADISON	31
[ ]	01023	CHOCTAW	19	[ ]	01091	MARENGO	25
[ ]	01025	CLARKE	13	[ ]	01093	MARION	15
[ ]	01027	CLAY	11	[ ]	01095	MARSHALL	25
[ ]	01029	CLEBURNE	14	[ ]	01097	MOBILE	39
[ ]	01031	COFFEE	21	[ ]	01099	MONROE	18
[ ]	01033	COLBERT	22	[ ]	01101	MONTGOMERY	32
[ ]	01035	CONECUH	16	[ ]	01103	MORGAN	28
[ ]	01037	COOSA	12	[ ]	01105	PERRY	26
[ ]	01039	COVINGTON	21	[ ]	01107	PICKENS	19
[ ]	01041	CRENSHAW	21	[ ]	01109	PIKE	21
[ ]	01043	CULLMAN	18	[ ]	01111	RANDOLPH	15
[ ]	01045	DALE	29	[ ]	01113	RUSSELL	22
[ ]	01047	DALLAS	22	[ ]	01115	ST CLAIR	18
[ ]	01049	DE KALB	33	[ ]	01117	SHELBY	13
[ ]	01051	ELMORE	13	[ ]	01119	SUMTER	13
[ ]	01053	ESCAMBIA	21	[ ]	01121	TALLADEGA	27
[ ]	01055	ETOWAH	20	[ ]	01123	TALLAPOOSA	22
[ ]	01057	FAYETTE	11	[ ]	01125	TUSCALOOSA	28
[ ]	01059	FRANKLIN	10	[ ]	01127	WALKER	14
[ ]	01061	GENEVA	23	[ ]	01129	WASHINGTON	27
[ ]	01063	GREENE	29	[ ]	01131	WILCOX	17
[ ]	01065	HALE	35	[ ]	01133	WINSTON	19
[ ]	01067	HENRY	17				

**Quantities are EXAMPLES ONLY**

EXHIBIT 6  
(2 Pages)

**REQUIRED DOCUMENTATION**

Non-Disclosure Agreement

**This Agreement** is effective as of the \_\_\_\_\_ day of \_\_\_\_\_, 2012, by and between \_\_\_\_\_, and the United States Department of Agriculture, Natural Resources Conservation Service.

**The Purpose** of this agreement is to permit the Natural Resources Conservation Service (NRCS) to transmit or exchange National Resource Inventory (NRI) Information "For Official Use Only" to or with the \_\_\_\_\_ for the purpose of aerial photography acquisition.

**NRI Information "For Official Use Only"**. The geographic locations of the Natural Resources Conservation Service National Resources Inventory (NRI) Sample Sites (Sites) are defined as NRI Information "For Official Use Only". NRI Information "For Official Use Only" may include, but is not limited to specifications, written descriptions, maps, aerial photographs, computer database files, geographic coordinates, and other information relating to the physical location of the sites. All reference to NRI Information "For Official Use Only" will be identified at the time of disclosure with an appropriate legend, marking, stamp or positive written identification as NRI Information "For Official Use Only" by the Natural Resources Conservation Service.

**Restrictions.** In order to maintain the integrity of the NRI, and to maintain confidentiality, privacy, and cooperation of land owners, the receiving party shall not release the locations of NRI Sites to the public, other agencies, any individual or other organization. With respect to Natural Resources Conservation Service NRI Information "For Official Use Only", the receiving party agrees to:

1. Use the NRI Information "For Official Use Only" solely for the purposes of this Agreement, any other use shall be only with the prior written consent of the Natural Resources Conservation Service;
2. Not disclose the NRI Information "For Official Use Only" to any third party or to any of their employees not having any "need to know" for the purposes of this Agreement, and provided that such third parties shall first have agreed in writing to be bound by a like obligation of confidentiality with respect to such NRI Information "For Official Use Only" as the receiving party is bound;
3. Take all reasonable steps, at least as great as the steps which the receiving takes with respect to its own NRI Information "For Official Use Only", to protect and safeguard the secrecy of and avoid the unauthorized disclosure or use of the NRI Information "For Official Use Only";
4. Promptly notify the Natural Resources Conservation Service of any misuse, misappropriation or unauthorized disclosure which may come to its attention; and
5. Not create second generation products from the NRI Information "For Official Use Only".

**Exceptions to Non-Disclosure.** \_\_\_\_\_ shall not be liable under this Agreement if a disclosure or use of NRI Information "For Official Use Only" received hereunder is made where the NRI Information "For Official Use Only":

1. Was in the public domain at the time of the disclosure or is subsequently made available to the general public without restriction and without breach of this Agreement by \_\_\_\_\_, or
2. Was known by \_\_\_\_\_ at the time of disclosure without restrictions on its use or independently developed by the receiving party, as shown by adequate documentation; or
3. Is disclosed to \_\_\_\_\_ by a third party without restriction and without breach

- of any agreement; or
- 4. Is disclosed with the prior written approval of the Natural Resources Conservation Service; and
- 5. Is used or disclosed pursuant to a court order, subpoena or other lawful order of a court or governmental authority of competent jurisdiction.

**Term.** This Agreement shall apply to NRI Information “For Official Use Only” provided to \_\_\_\_\_ during a period of one (1) year from the date set forth above, provided however, that either party may terminate this Agreement by giving the other party thirty (30) days notice in writing of its intention to terminate this Agreement. Termination shall not abrogate either party’s obligations hereunder for NRI Information “For Official Use Only” received prior to the date of termination.

**Remedies.** The receiving party acknowledges that its obligations to protect the NRI Information “For Official Use Only” are essential to the business interests of the receiving party, and that the disclosure of such NRI Information “For Official Use Only” in breach of this Agreement will cause the Natural Resources Conservation Service immediate, substantial and irreparable harm, the value of which would be extremely difficult to determine. Accordingly, the receiving party agrees that, in addition to any other remedies that may be available in law, equity, or otherwise for the disclosure or use of NRI Information “For Official Use Only” in breach of this Agreement, the Natural Resources Conservation Service shall be entitled to seek and obtain a temporary restraining order, injunctive relief or other equitable relief against the continuance of such breach, in addition to all other remedies, and without the requirement of posting a bond or undertaking or proving injury as a condition for relief.

**Return of Materials.** Upon written request from the Aerial Photography Field Office (APFO), or one (1) year after notice of final acceptance of imagery associated with this agreement, the receiving party agrees to destroy any materials and documents furnished by NRCS containing NRI Information “For Official Use Only” together with all copies made thereof by the receiving party, any geographically identifiable photographic imagery, and any scanned imagery that may have been retained for backup and recovery purposes. The receiving party shall deliver written certification to the Aerial Photography Field Office for documentation in the contract file that these actions have been taken and that the material has been destroyed with a copy of the certification forwarded to the Natural Resources Conservation Service.

**In Witness Whereof,** the parties have executed this Agreement by their authorized representatives as of the date set forth above.

By: \_\_\_\_\_  
Authorized Signature

By: \_\_\_\_\_  
Authorized Signature

\_\_\_\_\_  
Typed Name

\_\_\_\_\_  
Typed Name

\_\_\_\_\_  
Title

\_\_\_\_\_  
Title

## ATTACHMENT D

### STATE NRI SITE & SLI EXPOSURE INFORMATION

STATE: ALABAMA  
 FLYING SEASON: MAR 15 – JUN 30, 2012  
 TOTAL COUNTIES: 67  
 TOTAL NRI SITES: 1,386  
 TOTAL WRP EXPOSURES: 146  
 MEAN GROUND ELEVATION RANGE:  
 0' TO 1611'

STATE: CONNECTICUT  
 FLYING SEASON: MAR 15 – AUG 15, 2012  
 TOTAL COUNTIES: 8  
 TOTAL NRI SITES: 457  
 TOTAL WRP EXPOSURES: 49  
 MEAN GROUND ELEVATION RANGE:  
 0' TO 1598'

STATE: ARIZONA  
 FLYING SEASON: MAR 15 – SEP 30, 2012  
 TOTAL COUNTIES: 15  
 TOTAL NRI SITES: 744  
 TOTAL WRP EXPOSURES: 21  
 MEAN GROUND ELEVATION RANGE:  
 82' TO 8813'

STATE: DELAWARE  
 FLYING SEASON: AUG 15 – SEP 15, 2012  
 TOTAL COUNTIES: 3  
 TOTAL NRI SITES: 299  
 TOTAL WRP EXPOSURES: 65  
 MEAN GROUND ELEVATION RANGE:  
 0' TO 397'

STATE: ARKANSAS  
 FLYING SEASON: MAR 15 – SEP 30, 2012  
 TOTAL COUNTIES: 75  
 TOTAL NRI SITES: 1,404  
 TOTAL WRP EXPOSURES: 1,336  
 MEAN GROUND ELEVATION RANGE:  
 62' TO 2369'

STATE: FLORIDA  
 FLYING SEASON: MAR 15 – JUN 15, 2012  
 TOTAL COUNTIES: 67  
 TOTAL NRI SITES: 1,970  
 TOTAL WRP EXPOSURES: 325  
 MEAN GROUND ELEVATION RANGE:  
 0' TO 299'

STATE: CALIFORNIA  
 FLYING SEASON: MAR 15 – SEP 30, 2012  
 TOTAL COUNTIES: 58  
 TOTAL NRI SITES: 2,232  
 TOTAL WRP EXPOSURES: 618  
 MEAN GROUND ELEVATION RANGE:  
 -233' TO 12320'

STATE: GEORGIA  
 FLYING SEASON: MAR 15 – MAY 15, 2012  
 TOTAL COUNTIES: 159  
 TOTAL NRI SITES: 1,644  
 TOTAL WRP EXPOSURES: 112  
 MEAN GROUND ELEVATION RANGE:  
 0' TO 3750'

STATE: COLORADO  
 FLYING SEASON: MAR 15 – AUG 15, 2012  
 TOTAL COUNTIES: 62  
 TOTAL NRI SITES: 1,808  
 TOTAL WRP EXPOSURES: 338  
 MEAN GROUND ELEVATION RANGE:  
 3363' TO 13167'

STATE: IDAHO  
 FLYING SEASON: MAR 15 – JUL 31, 2012  
 TOTAL COUNTIES: 44  
 TOTAL NRI SITES: 1,748  
 TOTAL WRP EXPOSURES: 89  
 MEAN GROUND ELEVATION RANGE:  
 1142' TO 10027'

STATE: ILLINOIS  
FLYING SEASON: MAR 15 – JUL 31, 2012  
TOTAL COUNTIES: 102  
TOTAL NRI SITES: 2,219  
TOTAL WRP EXPOSURES: 671  
MEAN GROUND ELEVATION RANGE:  
289' TO 1119'

STATE: MAINE  
FLYING SEASON: MAR 15 – AUG 15, 2012  
TOTAL COUNTIES: 16  
TOTAL NRI SITES: 694  
TOTAL WRP EXPOSURES: 22  
MEAN GROUND ELEVATION RANGE:  
0' TO 3101'

STATE: INDIANA  
FLYING SEASON: MAR 15 – SEP 30, 2012  
TOTAL COUNTIES: 92  
TOTAL NRI SITES: 1,503  
TOTAL WRP EXPOSURES: 798  
MEAN GROUND ELEVATION RANGE:  
348' TO 1198'

STATE: MARYLAND  
FLYING SEASON: MAR 15 – SEP 15, 2012  
TOTAL COUNTIES: 23  
TOTAL NRI SITES: 1,025  
TOTAL WRP EXPOSURES: 92  
MEAN GROUND ELEVATION RANGE:  
0' TO 2982'

STATE: IOWA  
FLYING SEASON: JUL 1 – AUG 31, 2012  
TOTAL COUNTIES: 99  
TOTAL NRI SITES: 1,734  
TOTAL WRP EXPOSURES: 1,663  
MEAN GROUND ELEVATION RANGE:  
522' TO 1660'

STATE: MASSACHUSETTS  
FLYING SEASON: MAR 15 – AUG 15, 2012  
TOTAL COUNTIES: 14  
TOTAL NRI SITES: 612  
TOTAL WRP EXPOSURES: 101  
MEAN GROUND ELEVATION RANGE:  
0' TO 2205'

STATE: KANSAS  
FLYING SEASON: MAR 15 – JUL 15, 2012  
TOTAL COUNTIES: 105  
TOTAL NRI SITES: 2,014  
TOTAL WRP EXPOSURES: 405  
MEAN GROUND ELEVATION RANGE:  
709' TO 3918'

STATE: MICHIGAN  
FLYING SEASON: MAR 15 – SEP 30, 2012  
TOTAL COUNTIES: 83  
TOTAL NRI SITES: 2,045  
TOTAL WRP EXPOSURES: 556  
MEAN GROUND ELEVATION RANGE:  
571' TO 1847'

STATE: KENTUCKY  
FLYING SEASON: MAR 15 – AUG 31, 2012  
TOTAL COUNTIES: 120  
TOTAL NRI SITES: 1,444  
TOTAL WRP EXPOSURES: 387  
MEAN GROUND ELEVATION RANGE:  
276' TO 3931'

STATE: MINNESOTA  
FLYING SEASON: MAR 15 – JUL 31, 2012  
TOTAL COUNTIES: 87  
TOTAL NRI SITES: 2,375  
TOTAL WRP EXPOSURES: 832  
MEAN GROUND ELEVATION RANGE:  
656' TO 2087'

STATE: LOUISIANA  
FLYING SEASON: MAR 15 – SEP 30, 2012  
TOTAL COUNTIES: 64  
TOTAL NRI SITES: 1,954  
TOTAL WRP EXPOSURES: 1,856  
MEAN GROUND ELEVATION RANGE:  
0' TO 433'

STATE: MISSISSIPPI  
FLYING SEASON: MAR 15 – JUL 15, 2012  
TOTAL COUNTIES: 82  
TOTAL NRI SITES: 1,671  
TOTAL WRP EXPOSURES: 1,177  
MEAN GROUND ELEVATION RANGE:  
3' TO 604'

STATE: MISSOURI  
 FLYING SEASON: MAR 15 – AUG 31, 2012  
 TOTAL COUNTIES: 114  
 TOTAL NRI SITES: 2,138  
 TOTAL WRP EXPOSURES: 1,404  
 MEAN GROUND ELEVATION RANGE:  
 246' TO 1499'

STATE: NEW MEXICO  
 FLYING SEASON: MAR 15 – AUG 15, 2012  
 TOTAL COUNTIES: 33  
 TOTAL NRI SITES: 1,527  
 TOTAL WRP EXPOSURES: 84  
 MEAN GROUND ELEVATION RANGE:  
 2897' TO 11552'

STATE: MONTANA  
 FLYING SEASON: JUN 15 – JUL 31, 2012  
 TOTAL COUNTIES: 56  
 TOTAL NRI SITES: 1,649  
 TOTAL WRP EXPOSURES: 160  
 MEAN GROUND ELEVATION RANGE:  
 1900' TO 10181'

STATE: NEW YORK  
 FLYING SEASON: MAR 15 – SEP 15, 2012  
 TOTAL COUNTIES: 62  
 TOTAL NRI SITES: 1,630  
 TOTAL WRP EXPOSURES: 1,003  
 MEAN GROUND ELEVATION RANGE:  
 0' TO 3921'

STATE: NEBRASKA  
 FLYING SEASON: MAR 15 – SEP 30, 2012  
 TOTAL COUNTIES: 93  
 TOTAL NRI SITES: 1,766  
 TOTAL WRP EXPOSURES: 742  
 MEAN GROUND ELEVATION RANGE:  
 866' TO 5309'

STATE: NORTH CAROLINA  
 FLYING SEASON: MAR 15 – MAY 15, 2012  
 TOTAL COUNTIES: 100  
 TOTAL NRI SITES: 1,572  
 TOTAL WRP EXPOSURES: 300  
 MEAN GROUND ELEVATION RANGE:  
 0' TO 5499'

STATE: NEVADA  
 FLYING SEASON: MAR 15 – JUL 31, 2012  
 TOTAL COUNTIES: 17  
 TOTAL NRI SITES: 1,062  
 TOTAL WRP EXPOSURES: 6  
 MEAN GROUND ELEVATION RANGE:  
 1240' TO 10509'

STATE: NORTH DAKOTA  
 FLYING SEASON: MAR 15 – JUL 31, 2012  
 TOTAL COUNTIES: 53  
 TOTAL NRI SITES: 2,055  
 TOTAL WRP EXPOSURES: 790  
 MEAN GROUND ELEVATION RANGE:  
 791' TO 3101'

STATE: NEW HAMPSHIRE  
 FLYING SEASON: MAR 15 – JUL 1, 2012  
 TOTAL COUNTIES: 10  
 TOTAL NRI SITES: 504  
 TOTAL WRP EXPOSURES: 90  
 MEAN GROUND ELEVATION RANGE:  
 3' TO 3399'

STATE: OHIO  
 FLYING SEASON: MAR 15 – SEP 30, 2012  
 TOTAL COUNTIES: 88  
 TOTAL NRI SITES: 1,625  
 TOTAL WRP EXPOSURES: 413  
 MEAN GROUND ELEVATION RANGE:  
 479' TO 1398'

STATE: NEW JERSEY  
 FLYING SEASON: MAR 15 – SEP 15, 2012  
 TOTAL COUNTIES: 21  
 TOTAL NRI SITES: 605  
 TOTAL WRP EXPOSURES: 33  
 MEAN GROUND ELEVATION RANGE:  
 0' TO 1358'

STATE: OKLAHOMA  
 FLYING SEASON: MAR 15 – AUG 15, 2012  
 TOTAL COUNTIES: 77  
 TOTAL NRI SITES: 1,578  
 TOTAL WRP EXPOSURES: 422  
 MEAN GROUND ELEVATION RANGE:  
 377' TO 4603'

STATE: OREGON  
FLYING SEASON: MAR 15 – JUL 31, 2012  
TOTAL COUNTIES: 36  
TOTAL NRI SITES: 1,588  
TOTAL WRP EXPOSURES: 310  
MEAN GROUND ELEVATION RANGE:  
0' TO 9213'

STATE: PENNSYLVANIA  
FLYING SEASON: MAR 15 – AUG 31, 2012  
TOTAL COUNTIES: 67  
TOTAL NRI SITES: 1,791  
TOTAL WRP EXPOSURES: 242  
MEAN GROUND ELEVATION RANGE:  
3' TO 2894'

STATE: RHODE ISLAND  
FLYING SEASON: MAR 15 – AUG 15, 2012  
TOTAL COUNTIES: 5  
TOTAL NRI SITES: 294  
TOTAL WRP EXPOSURES: 1  
MEAN GROUND ELEVATION RANGE:  
0' TO 758'

STATE: SOUTH CAROLINA  
FLYING SEASON: MAR 15 – MAY 15, 2012  
TOTAL COUNTIES: 46  
TOTAL NRI SITES: 1,244  
TOTAL WRP EXPOSURES: 584  
MEAN GROUND ELEVATION RANGE:  
0' TO 3281'

STATE: SOUTH DAKOTA  
FLYING SEASON: MAR 15 – JUL 31, 2012  
TOTAL COUNTIES: 66  
TOTAL NRI SITES: 1,904  
TOTAL WRP EXPOSURES: 1,257  
MEAN GROUND ELEVATION RANGE:  
974' TO 6480'

STATE: TENNESSEE  
FLYING SEASON: MAR 15 – AUG 31, 2012  
TOTAL COUNTIES: 95  
TOTAL NRI SITES: 1,511  
TOTAL WRP EXPOSURES: 275  
MEAN GROUND ELEVATION RANGE:  
210' TO 4318'

STATE: TEXAS  
FLYING SEASON: MAR 15 – AUG 15, 2012  
TOTAL COUNTIES: 254  
TOTAL NRI SITES: 4,933  
TOTAL WRP EXPOSURES: 418  
MEAN GROUND ELEVATION RANGE:  
0' TO 5397'

STATE: UTAH  
FLYING SEASON: MAR 15 – JUL 31, 2012  
TOTAL COUNTIES: 29  
TOTAL NRI SITES: 938  
TOTAL WRP EXPOSURES: 43  
MEAN GROUND ELEVATION RANGE:  
2599' TO 11077'

STATE: VERMONT  
FLYING SEASON: MAR 15 – SEP 15, 2012  
TOTAL COUNTIES: 14  
TOTAL NRI SITES: 552  
TOTAL WRP EXPOSURES: 151  
MEAN GROUND ELEVATION RANGE:  
95' TO 2956'

STATE: VIRGINIA  
FLYING SEASON: MAR 15 – MAY 15, 2012  
TOTAL COUNTIES: 100  
TOTAL NRI SITES: 1,745  
TOTAL WRP EXPOSURES: 72  
MEAN GROUND ELEVATION RANGE:  
0' TO 4265'

STATE: WASHINGTON  
FLYING SEASON: JUN 1 – AUG 15, 2012  
TOTAL COUNTIES: 39  
TOTAL NRI SITES: 1,388  
TOTAL WRP EXPOSURES: 290  
MEAN GROUND ELEVATION RANGE:  
0' TO 7100'

STATE: WEST VIRGINIA  
FLYING SEASON: MAR 15 – AUG 15, 2012  
TOTAL COUNTIES: 55  
TOTAL NRI SITES: 839  
TOTAL WRP EXPOSURES: 74  
MEAN GROUND ELEVATION RANGE:  
341' TO 4698'

STATE: WISCONSIN  
FLYING SEASON: MAR 15 – AUG 31, 2012  
TOTAL COUNTIES: 72  
TOTAL NRI SITES: 1,826  
TOTAL WRP EXPOSURES: 761  
MEAN GROUND ELEVATION RANGE:  
591' TO 1821'

STATE: WYOMING  
FLYING SEASON: MAR 15 – AUG 15, 2012  
TOTAL COUNTIES: 23  
TOTAL NRI SITES: 1,209  
TOTAL WRP EXPOSURES: 225  
MEAN GROUND ELEVATION RANGE:  
3265' TO 12999'

**TOTALS: 72,455 NRI Sites and 21,809 WRP Exposures**

---

STATE: HAWAII  
FLYING SEASON: MAR 15 – DEC 31, 2012  
TOTAL COUNTIES: 4  
TOTAL NRI SITES: 375  
TOTAL WRP EXPOSURES: 2  
MEAN GROUND ELEVATION RANGE:  
0' TO 12117'

**HAWAII TOTALS: 375 NRI Sites and 2 WRP Exposures**

---

STATE: PUERTO RICO & U.S. VIRGIN ISLANDS  
FLYING SEASON: MAR 15 – DEC 31, 2012  
TOTAL COUNTIES: 75  
TOTAL NRI SITES: 450  
MEAN GROUND ELEVATION RANGE:  
0' TO 3229'

**PUERTO RICO & US VIRGIN ISLANDS TOTALS: 450 NRI Sites**

**ATTACHMENT E****2012 OVERSIZED NRI SITE LOCATION MAPS****1. PROJECT AREA(S) TO BE PHOTOGRAPHED**

The area covered in each NRI Site is nominally 160 acres, but varies from 40 acres to 1084 acres. There are approximately 1,844 NRI sites over 500 acres (300 acres or less in CA, KS, MO, and SD; 200 acres in UT) which are identified as "oversize" sites.

USDA requires the entire site to be on a single frame regardless of size. Contractor must adjust flight altitudes from the stated 1:7,920 nominal scale, to flight altitudes achieving either a 1:12,000 nominal scale or 1:15,840 scale for sites greater than 900 acres to ensure complete coverage of each oversize site on one frame of film. USDA prefers a minimum buffer of 1320 feet (1/4 mile) on all sides, but will accept a buffer of 660 feet (1/8 mile) on all sides for **oversize** NRI Sites.

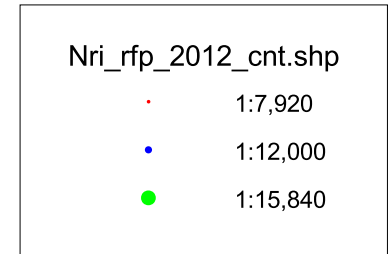
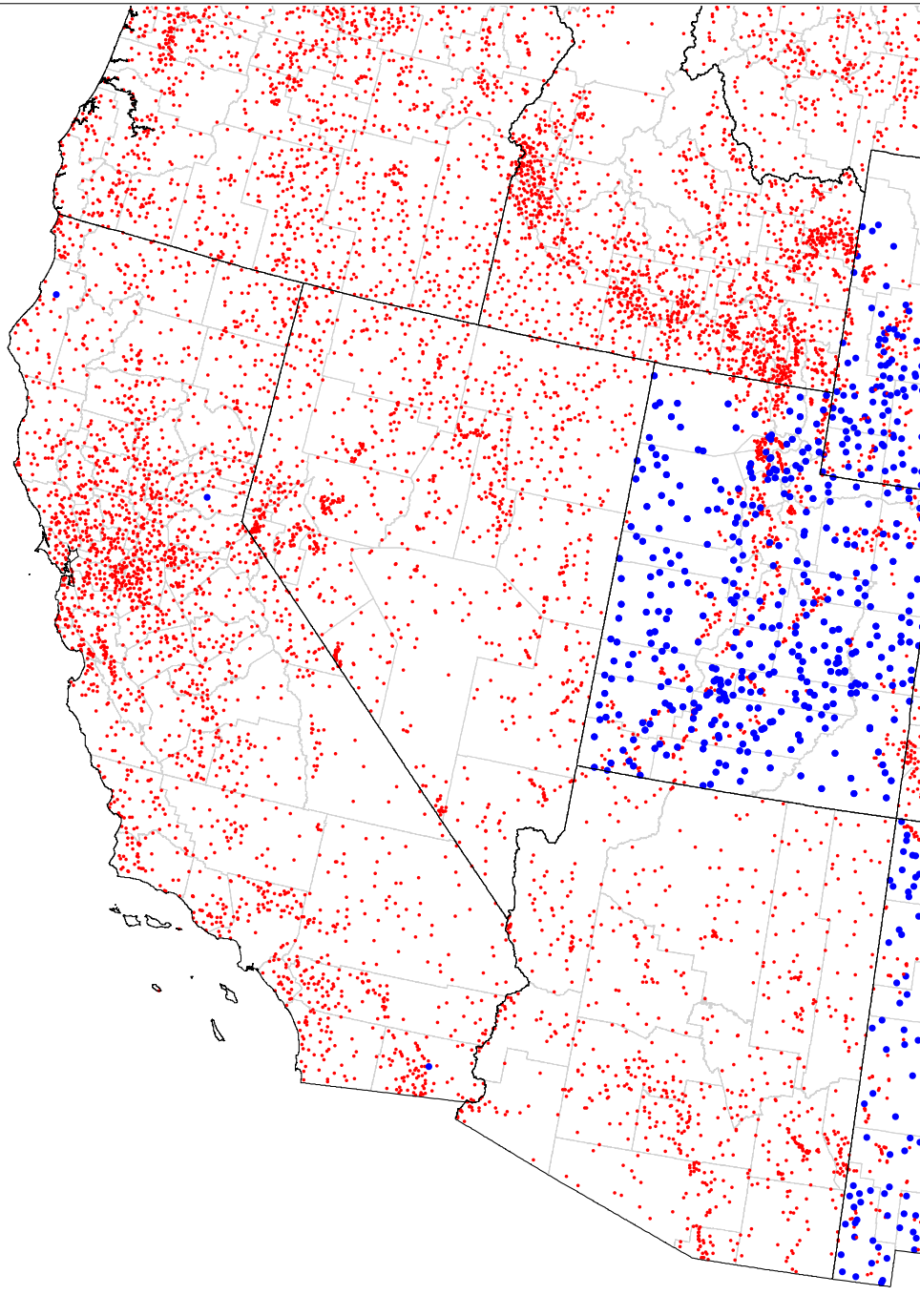
**2. PROJECT FLIGHT PLAN DESCRIPTION**

The nominal photographic scale for the majority of this project is 1:7,920, with the nominal flight altitude above mean ground elevation of 3,960 feet (1,207 meters). For oversize NRI sites of 500 acres or more (300 acres in CA, KS, MO and SD; 200 acres in UT), the nominal photographic scale is 1:12,000, with the nominal flight altitude above ground elevation of 6,000 feet (1,829 meters); sites greater than 900 acres with a nominal photographic scale of 1:15,840 have a nominal flight altitude above ground elevation of 7,920 feet (2,414 meters.) There are approximately 1,844 oversize sites located in the following states:

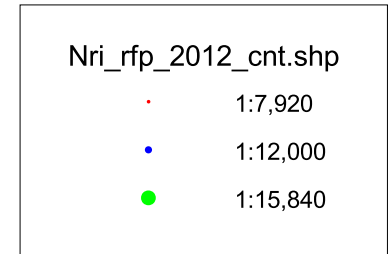
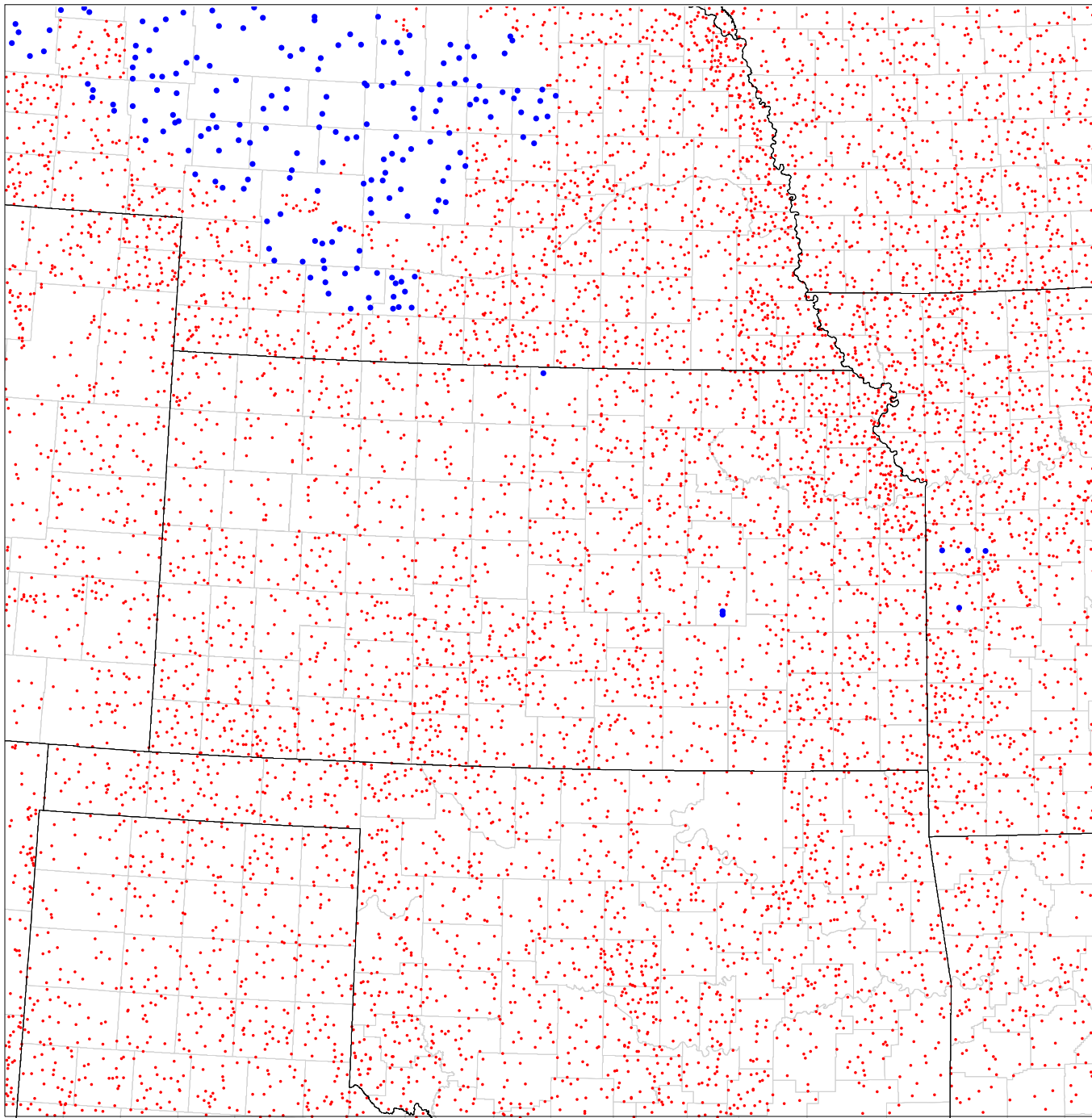
STATE	QUANTITY	MIN. ACRES	MAX. ACRES
CALIFORNIA	3	327	460
KANSAS	3	342	523
MISSOURI	12	313	403
NEBRASKA	225	532	773
NEW MEXICO	295	506	1570
SOUTH DAKOTA	431	301	761
UTAH	374	207	882
WYOMING	501	517	1084
TOTAL QUANTITY	1,844		

3. The following maps indicate the location of all oversize NRI Sites in the RFP for 2012.

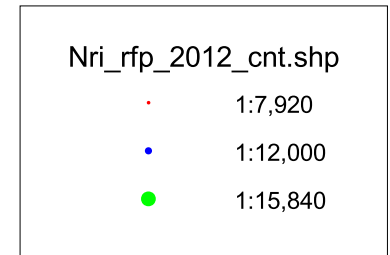
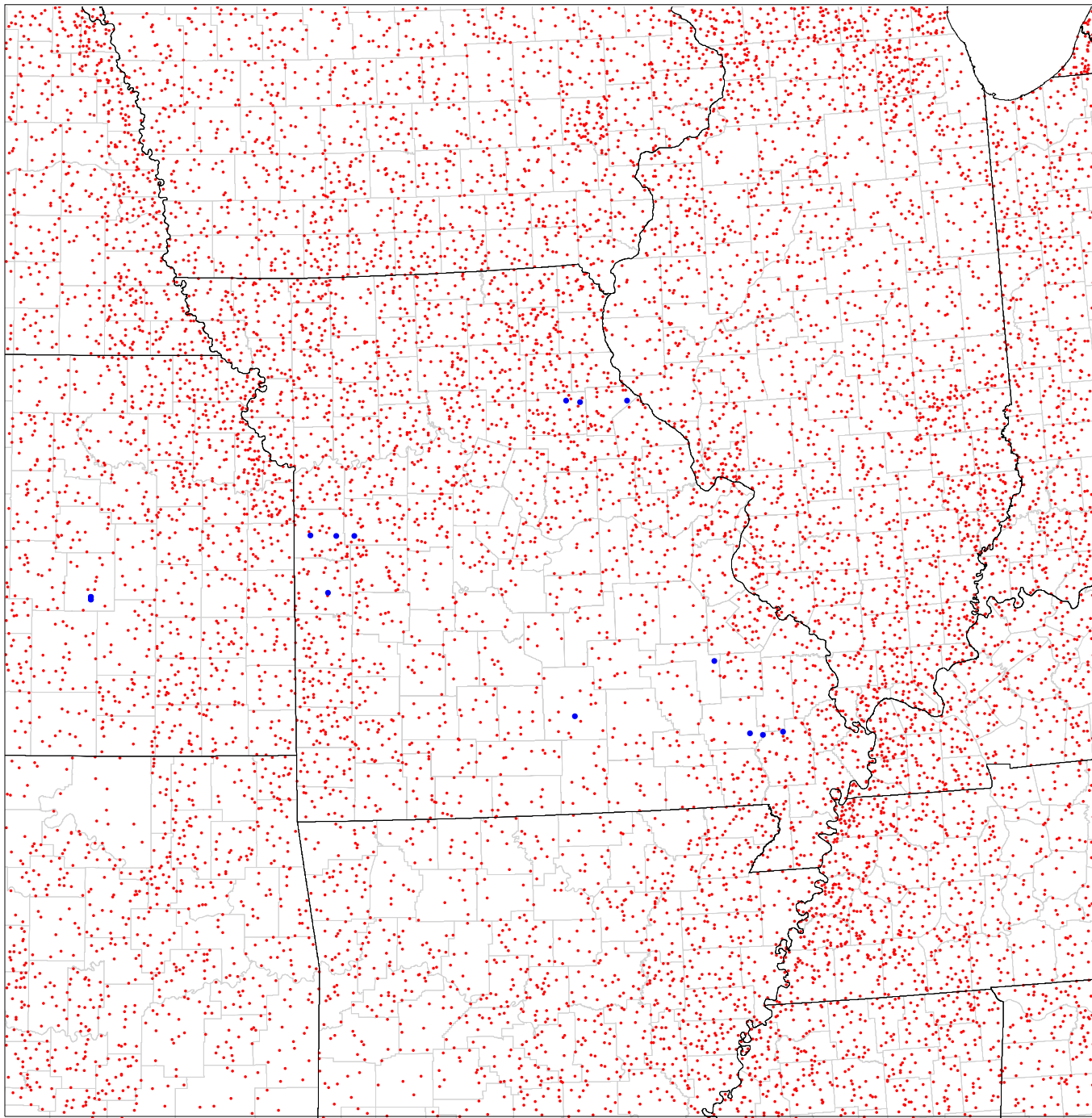
# California Oversized Segments



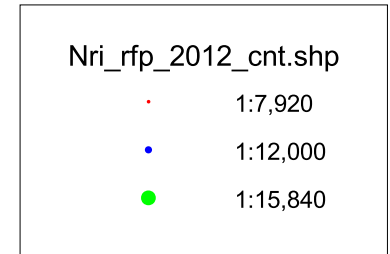
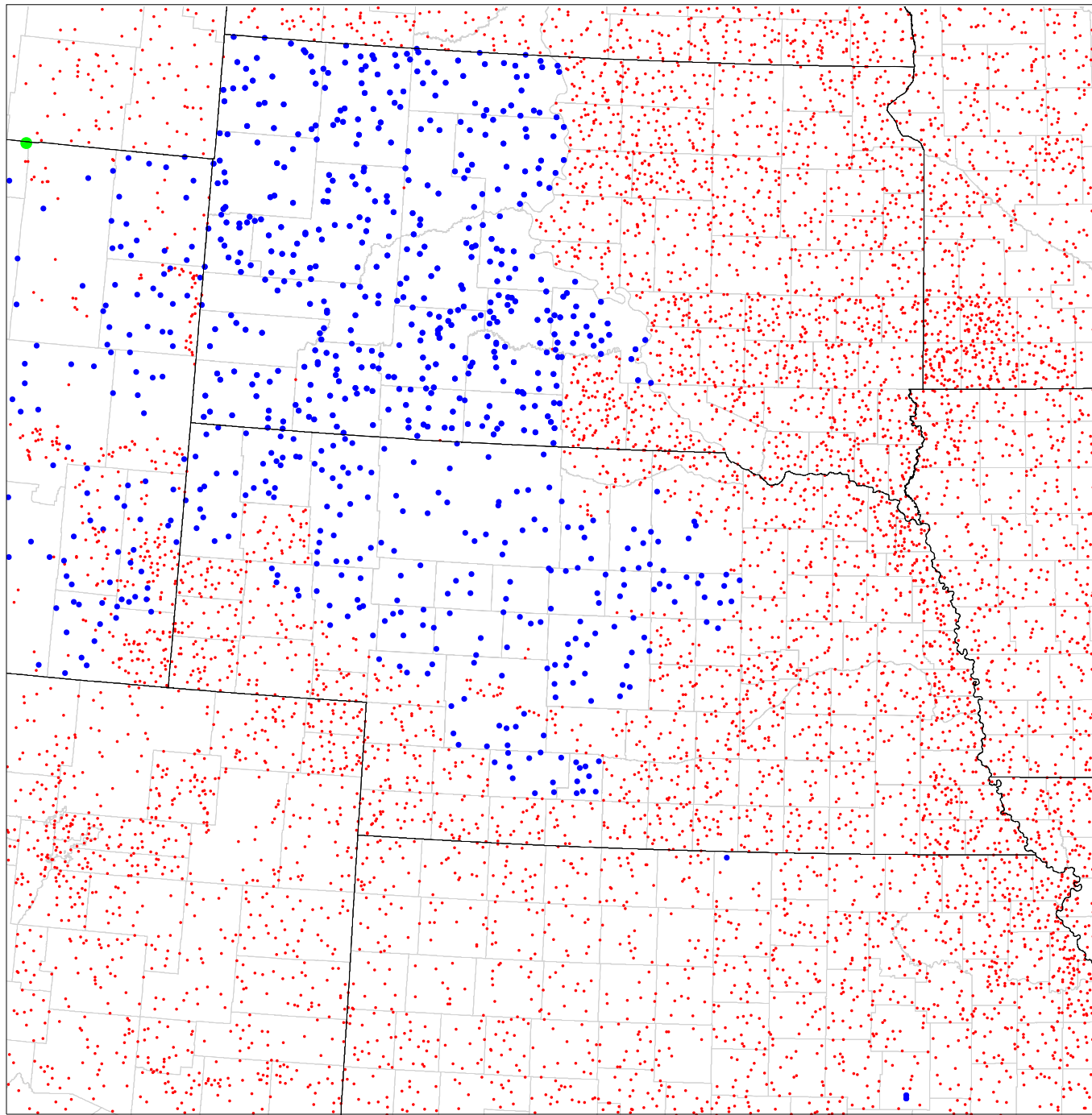
# Kansas Oversized Segments



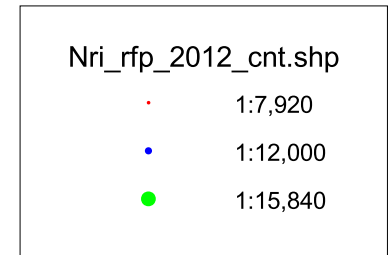
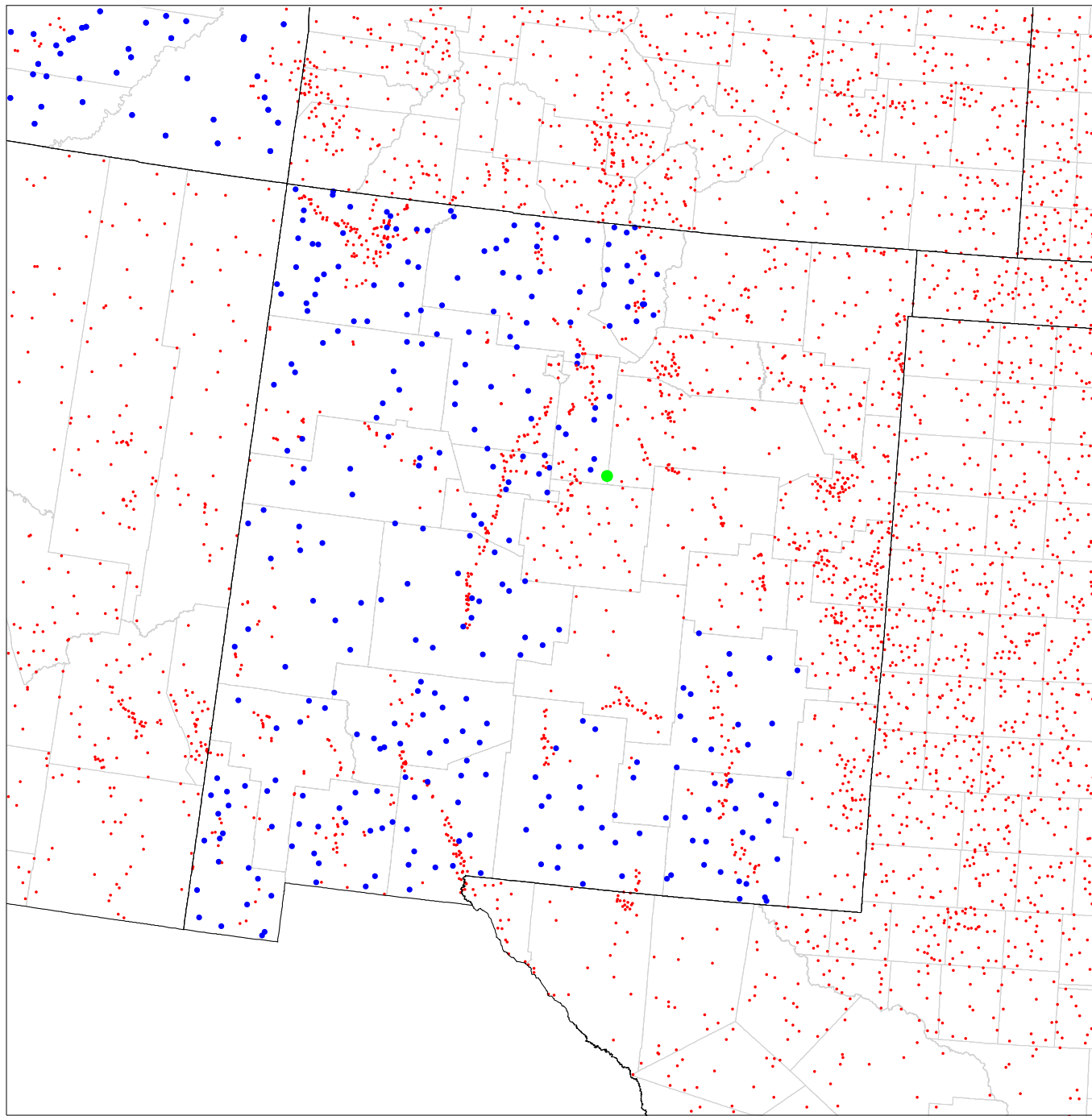
# Missouri Oversized Segments



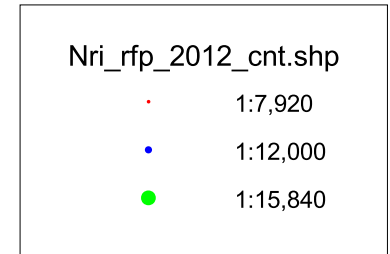
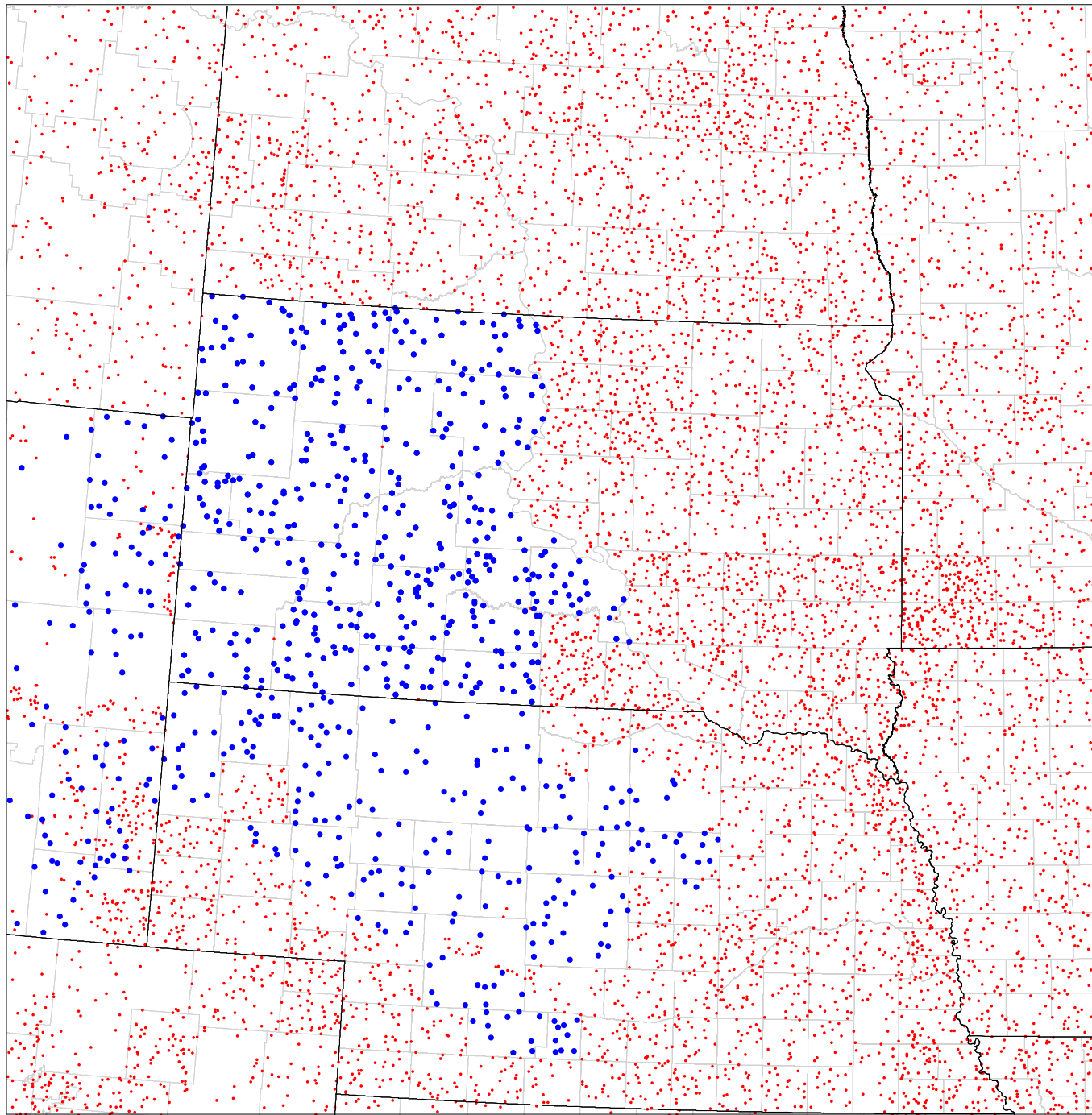
# Nebraska Oversized Segments



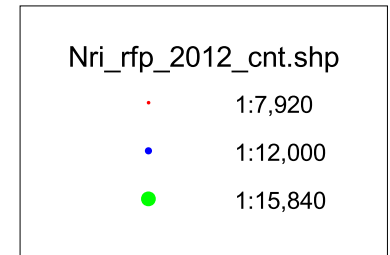
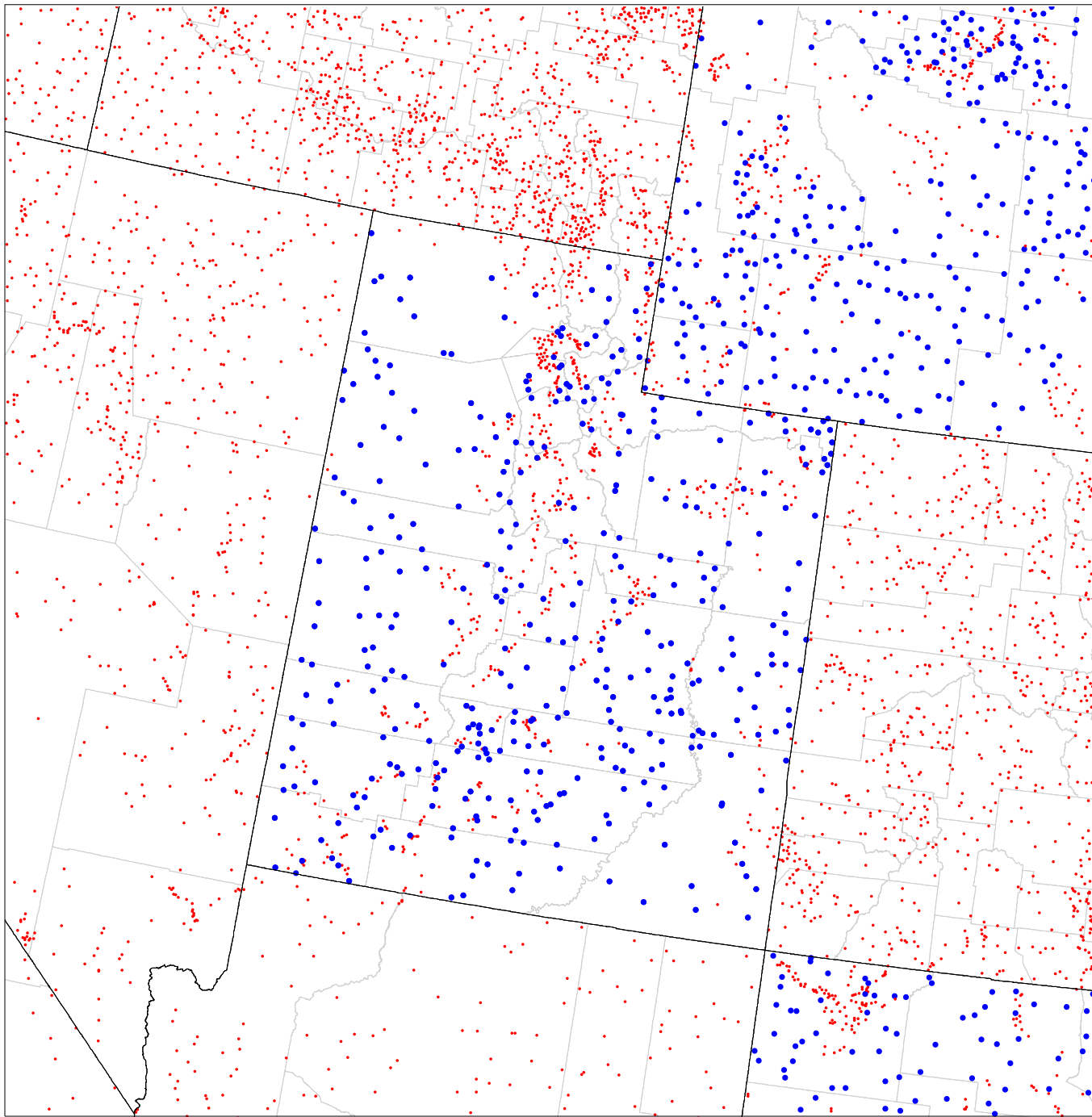
# New Mexico Oversized Segments



# South Dakota Oversized Segments



# Utah Oversized Segments



# Wyoming Oversized Segments

