

Conservation Reserve Program

General Signup 66 March 9, 2026 through
April 17, 2026



Overview

USDA's Farm Service Agency (FSA) will conduct a general Conservation Reserve Program (CRP) signup from March 9, 2026, through April 17, 2026. CRP is a federally funded voluntary program that contracts with agricultural producers to ensure environmentally sensitive agricultural land is not farmed or ranched but is instead devoted to conservation benefits. CRP participants establish long-term, resource-conserving plant species, such as approved grasses or trees (known as "covers") to control soil erosion, improve water quality, and develop wildlife habitat. In return, FSA provides participants with rental payments and cost share assistance. Contract duration is between 10 and 15 years. Accepted contracts for this general CRP signup period will become effective Oct. 1, 2026.

The Conservation Reserve Program was originally authorized by the Food Security Act of 1985 and reauthorized under the Agricultural Improvement Act of 2018 (the 2018 Farm Bill). The Continuing Appropriations, Agriculture, Legislative Branch, Military Construction and Veterans Affairs, and Extensions Act, 2026 (Pub. L. 119-37), extended CRP authority through Sept. 30, 2026.

Submitting General CRP Offers

Land not currently enrolled in CRP may be offered during this general CRP signup period. In addition, CRP producers whose CRP contracts are expiring on Sept. 30, 2026, may offer the expiring land in general CRP signup 66. To submit general CRP offers, producers must contact their local FSA office. FSA will only accept general CRP offers during the announced signup period. FSA will only accept general CRP offers during the announced signup period.

Who is Eligible?

To be eligible for general CRP, a producer must have owned or operated the land for at least 12 months prior to the end of this general CRP signup period, unless:

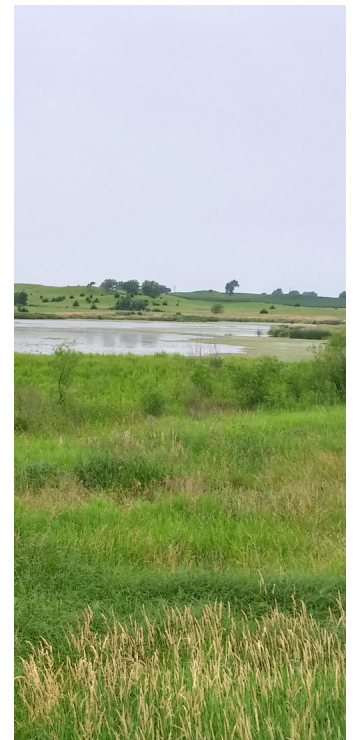
- ◆ The new owner acquired the land due to the previous owner's death;
- ◆ The ownership change occurred due to foreclosure where the owner exercised a timely right of redemption in accordance with state law or;
- ◆ The circumstance of the acquisition presents adequate assurance to FSA the new owner did not acquire the land for the purpose of placing it in CRP.

For More Information

Visit FSA's CRP webpage <https://www.fsa.usda.gov/>.

To locate your local FSA office, visit: farmers.gov/service-locator.

This fact sheet is provided for informational purposes only; other restrictions or requirements may apply. Consult your local FSA office for details.



Guidance documents lack the force and effect of law, unless expressly authorized by statute or incorporated into a contract. USDA may not cite, use, or rely on any guidance that is not available through their guidance portal, except to establish historical facts.



What Land is Eligible?

To be eligible for general CRP, land must be cropland (including field margins), planted, or considered planted, to an agricultural commodity four of the six crop years from 2012 to 2017 and be physically and legally capable of being planted (no planting restrictions due to an easement or other legally binding instrument) in a normal manner to an agricultural commodity.

Alfalfa or other multiyear grasses and legumes grown in a rotation not to exceed 12 years may also be eligible.

Additional Cropland Requirements

In addition to the eligible land requirements for the general CRP signup period, cropland must meet one of the following criteria:

- Have a weighted average erosion index of eight or higher;
- Be enrolled in a CRP contract that expires Sept. 30, 2026 or;
- Be located in a national or state CRP conservation priority area.

CRP Payments

FSA provides producers whose offers are selected for general CRP enrollment with annual rental payments and cost share assistance.

- **Annual Rental Payments:**

In return for establishing permanent resource conserving covers, FSA provides annual rental payments to participants. Rental rates are based on the relative productivity of the soils and county cropland rental rates factored to a statutory 85 percent limit. County office staff will calculate the maximum CRP rental rate based on the land being offered. Producers may reduce the per acre rental rate offered to increase the likelihood their offer will be accepted.

- **Cost-Share Assistance:**

FSA provides cost share assistance to participants who establish approved practices on land enrolled in CRP. Cost share assistance cannot exceed 50 percent of the participant's eligible costs and is not available for any management activity.

Ranking General CRP Offers

FSA will rank offers for the general CRP signup period according to the Environmental Benefits Index (EBI). FSA collects data (primarily based on location, soils information, and selected conservation practice) and determines the environmental indices for the land offered. FSA ranks each eligible offer in comparison to all other offers and selects from that ranking.

After the general CRP signup period ends, the Secretary of Agriculture will determine an EBI cutoff score used by FSA to accept and reject offers. Those who have met previous EBI thresholds are not guaranteed a contract under this signup period. Producers may consult with local FSA and Natural Resource Conservation (NRCS) staff on how to maximize EBI points and increase the likelihood their offer will be accepted.

Additional CRP Signup Opportunities

In addition to the general CRP signup 66, producers can offer their most environmentally sensitive land in continuous CRP signup 65 or in the upcoming Grassland CRP signup 208.

Guidance documents lack the force and effect of law, unless expressly authorized by statute or incorporated into a contract. USDA may not cite, use, or rely on any guidance that is not available through their guidance portal, except to establish historical facts.